

CMMsr:sc
May 15, 1997

BEFORE THE CITY COUNCIL
OF THE CITY OF JONESBORO, ARKANSAS

IN THE MATTER OF THE CLOSING OF
A PORTION OF A DRAINAGE EASEMENT
LOCATED IN SAGE MEADOWS SUBDIVISION,
PHASE 1-D, TO THE CITY OF JONESBORO

PETITION

Comes Sage Meadows Development, Inc., by and through its attorneys, Mooney Law Firm, and petitions the City Council of the City of Jonesboro, Arkansas, to abandon the drainage easement which is located between Lots T-12A and T-13A, and Lots T-33A and T-34 in Sage Meadows Subdivision, Phase 1-D to the City of Jonesboro, Arkansas.

Plats of said property showing the portion of the Drainage Easement to be abandoned are attached hereto as Exhibit "A".

MOONEY LAW FIRM
Box 1423
Jonesboro, AR 72403
501 - 935-5847

By Charles M. Mooney
Charles M. Mooney, Sr.
Bar No. 61020
Attorney for Sage
Meadows Development

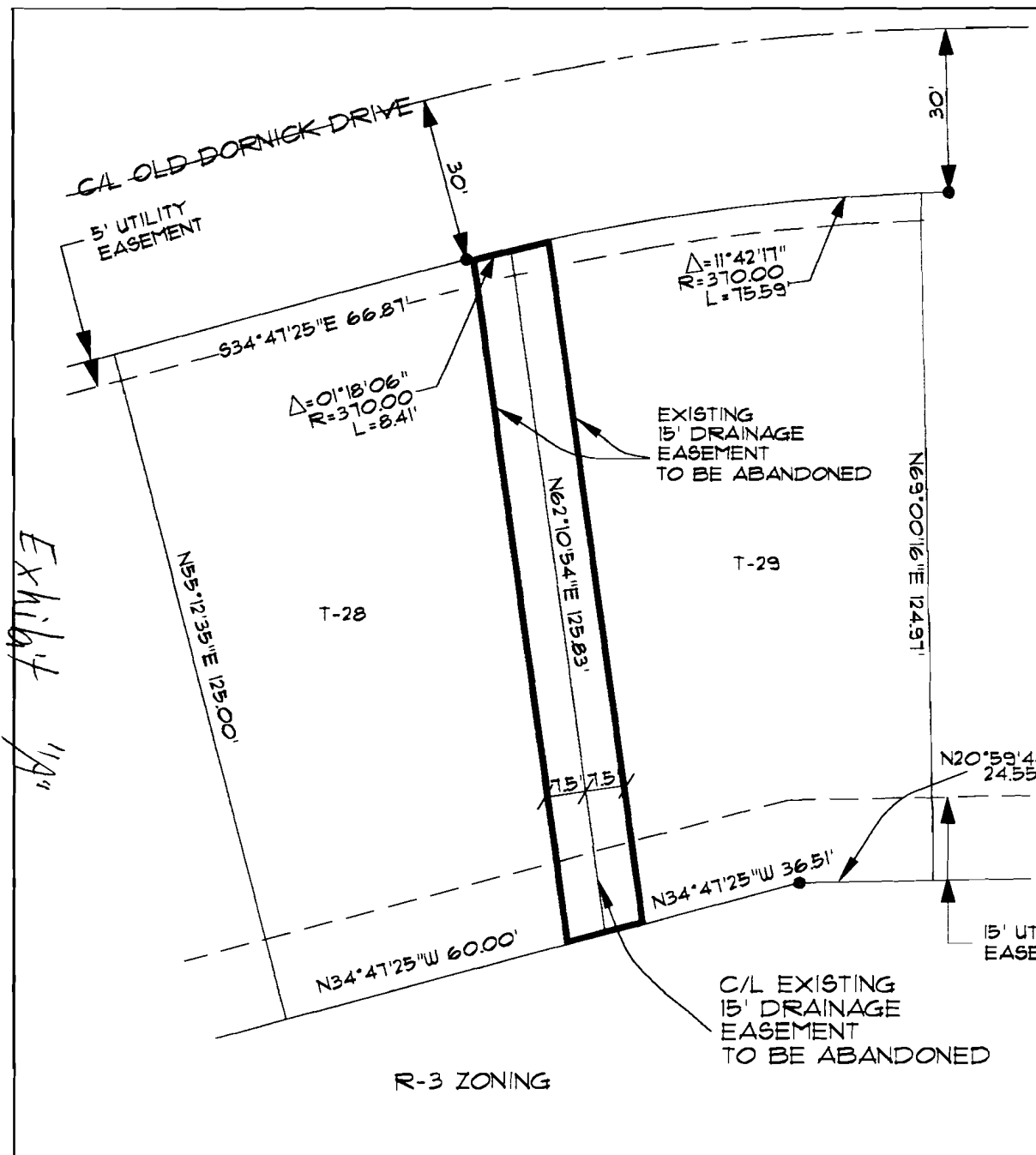
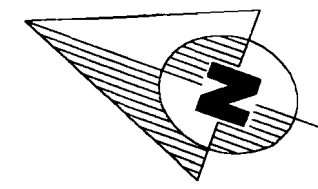


Exhibit 'A'

DESCRIPTION

SOUTH 7.5 FEET OF LOT T-28 TOGETHER WITH THE NORTH 7.5 FEET OF LOT T-29, ACCORDING TO THE PLAT OF SAGE MEADOWS PHASE I-D, JONESBORO, ARKANSAS, CRAIGHEAD COUNTY ARKANSAS.

CONTAINING IN ALL 1887 SQ. FT. OR 0.043 ACRES, MORE OR LESS.



(ASSUMED NORTH)



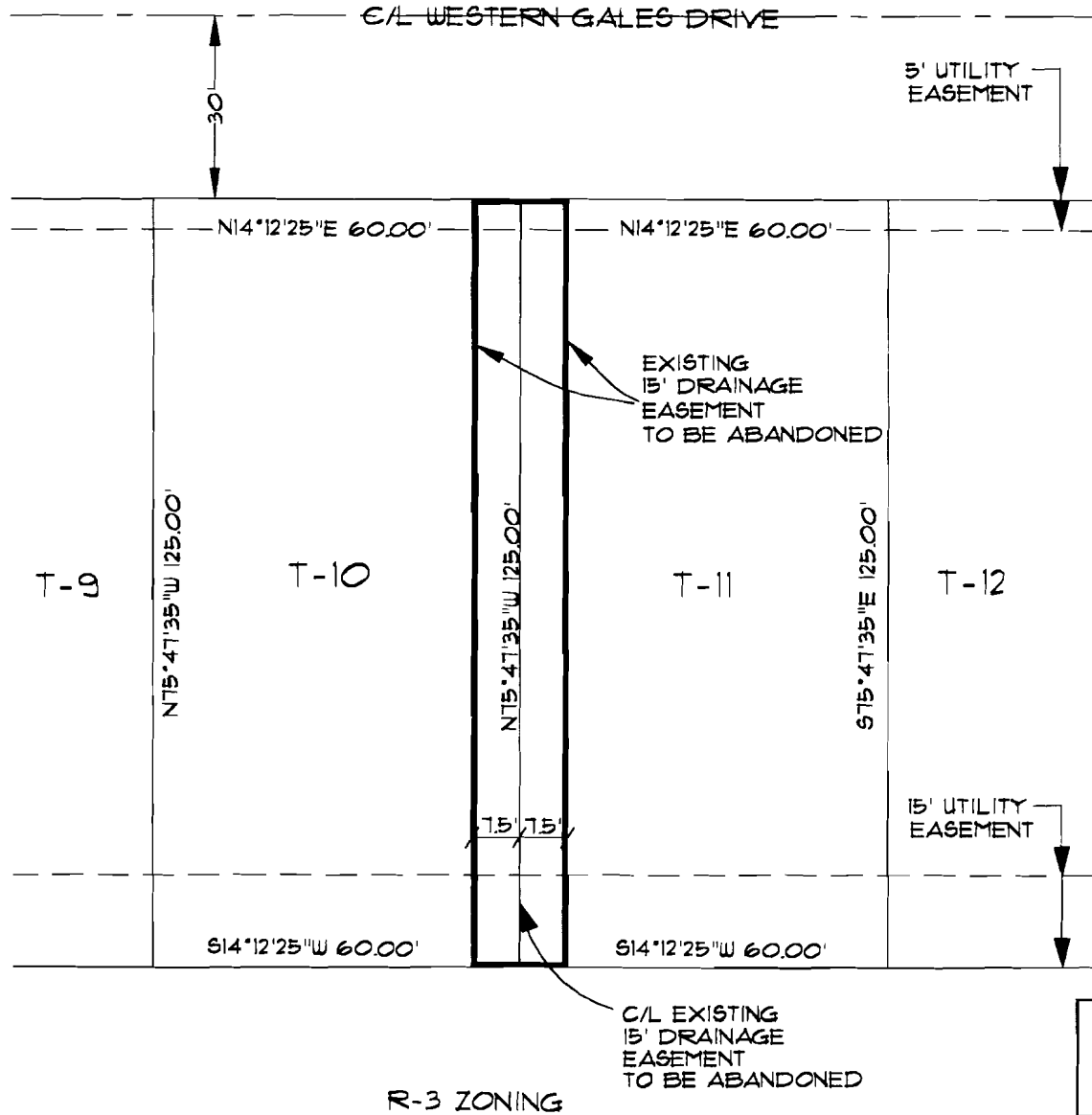
GRAPHIC SCALE
IN FEET

ASSOCIATED ENGINEERING CO.
ENGINEERING AND LAND SURVEYING
1721 DAN AVENUE - JONESBORO, AR 72401
501-932-3594

EASEMENT ABANDONMENT SKETCH
SAGE MEADOWS - PHASE I-D
JONESBORO, ARKANSAS

DATE	BY

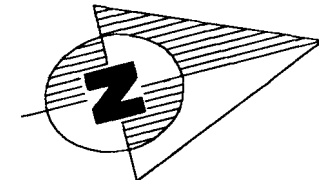
Exhibit 174



DESCRIPTION

NORTH 15 FEET OF LOT T-10 TOGETHER WITH THE SOUTH 15 FEET OF LOT T-11, ACCORDING TO THE PLAT OF SAGE MEADOWS PHASE I-D, JONESBORO, ARKANSAS, CRAIGHEAD COUNTY ARKANSAS.

CONTAINING IN ALL 1,875 SQ. FT. OR 0.043 ACRES, MORE OR LESS.



(ASSUMED NORTH)

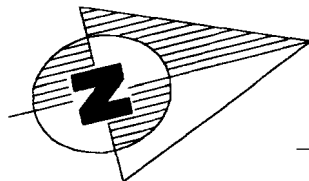
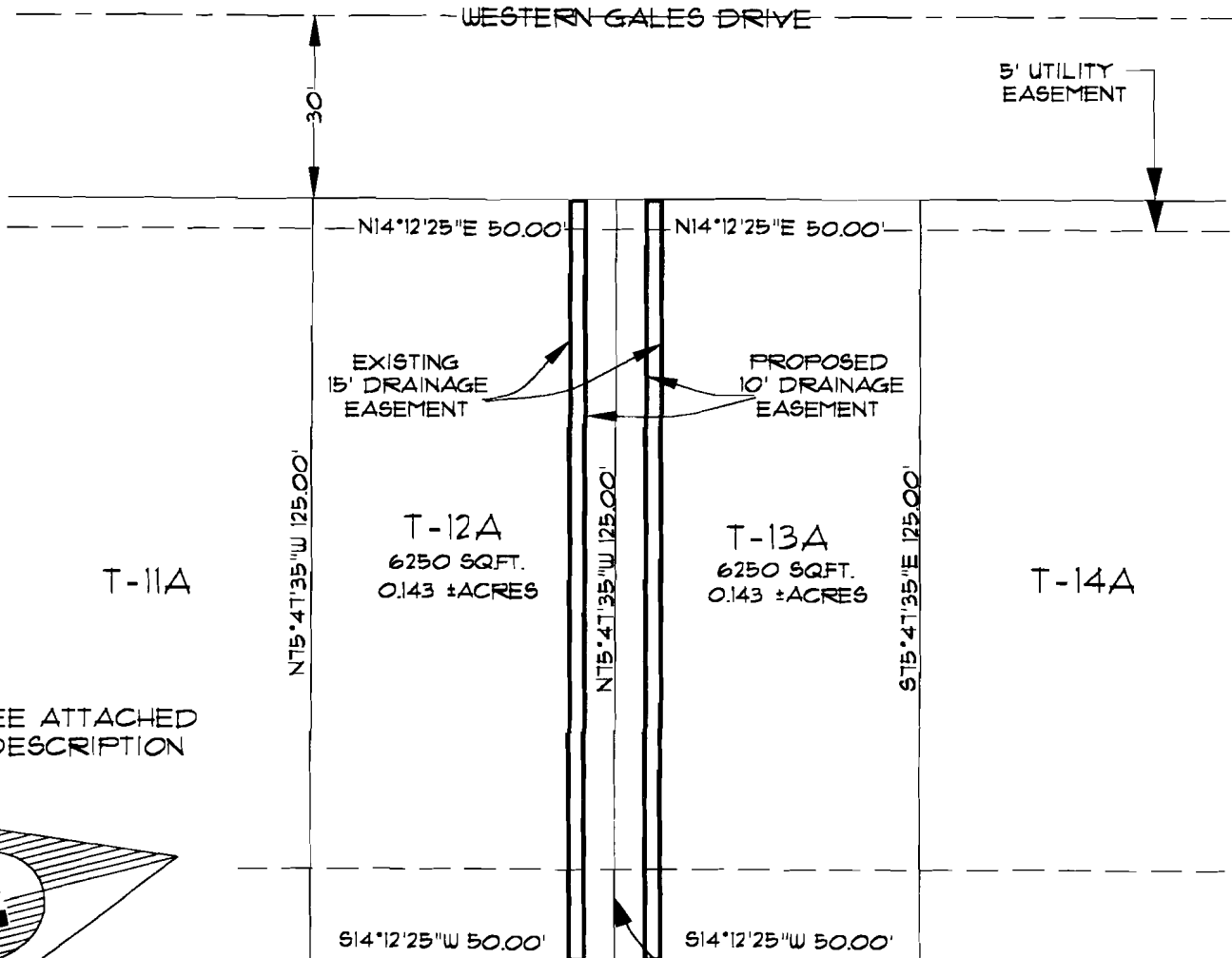


GRAPHIC SCALE
IN FEET

ASSOCIATED ENGINEERING CO.
ENGINEERING AND LAND SURVEYING
1721 DAN AVENUE - JONESBORO, AR 72401
501-932-3594

EASEMENT ABANDONMENT SKETCH
SAGE MEADOWS - PHASE I-D
JONESBORO, ARKANSAS

DATE	BY



(ASSUMED NORTH)

30' 15' 0' 30' 60'



GRAPHIC SCALE
IN FEET

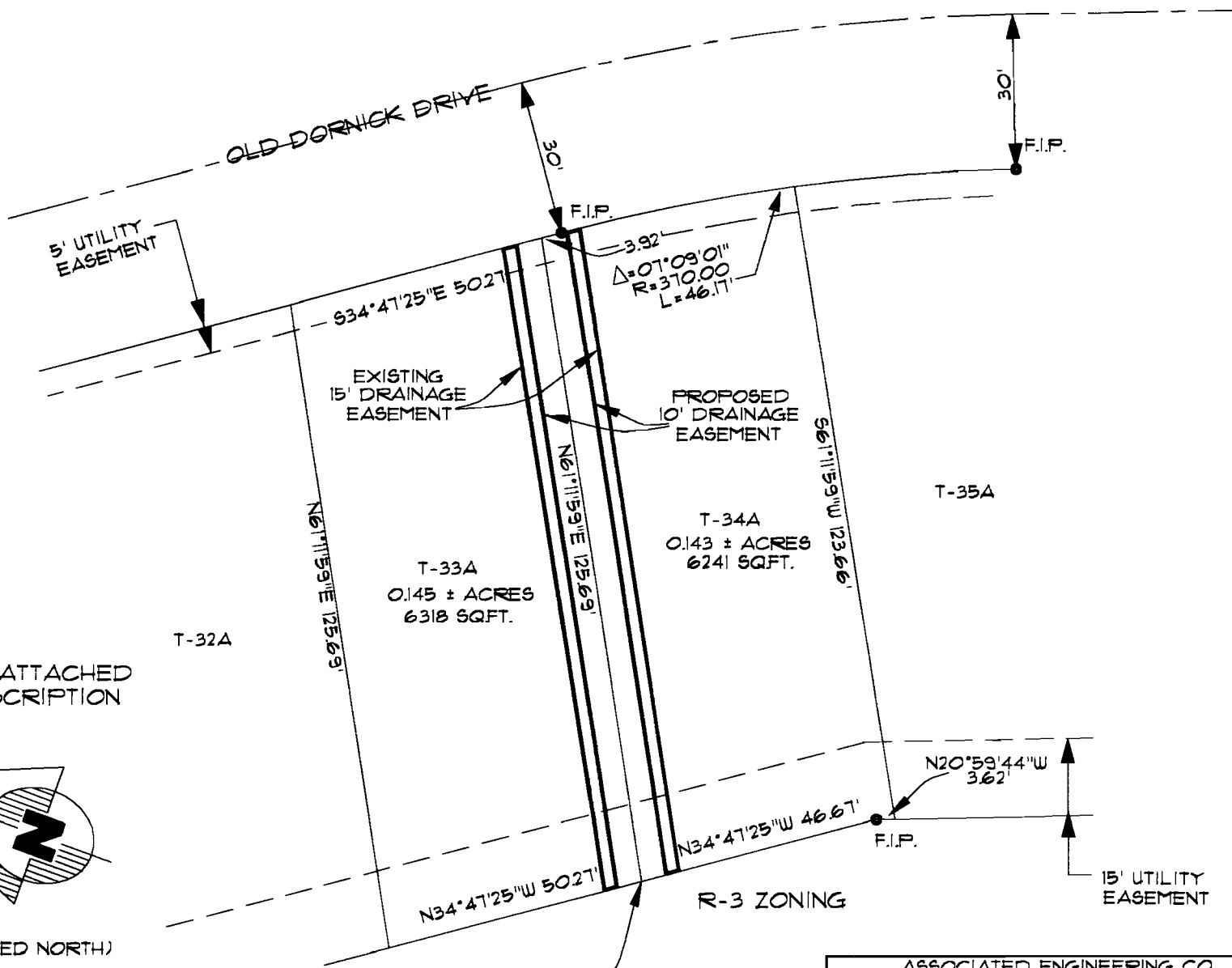
R-3 ZONING

C/L EXISTING
15' DRAINAGE
EASEMENT

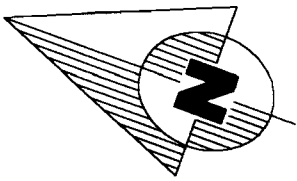
ASSOCIATED ENGINEERING CO.
ENGINEERING AND LAND SURVEYING
1721 DAN AVENUE - JONESBORO, AR 72401
501-932-3594

EASEMENT ABANDONMENT SKETCH
SAGE MEADOWS - PHASE 1-D
JONESBORO, ARKANSAS

DATE	BY



NOTE: SEE ATTACHED LEGAL DESCRIPTION



GRAPHIC SCALE
IN FEET

ASSOCIATED ENGINEERING CO.
ENGINEERING AND LAND SURVEYING
1721 DAN AVENUE - JONESBORO, AR 72401
501-932-3594

EASEMENT ABANDONMENT SKETCH
SAGE MEADOWS - PHASE I-D
JONESBORO, ARKANSAS

DATE	BY	DRAWN: KL/CAD	CHECKED: JMC	DATE: 04/15/97	SHEET
		SCALE: 1" = 30'	CADD FILE: 96113141	DWG#: 04153410024	1 OF 1

CMMsr:bd
May 21, 1997

BEFORE THE CITY COUNCIL
OF THE CITY OF JONESBORO, ARKANSAS

IN THE MATTER OF THE CLOSING
OF A PORTION OF A DRAINAGE
EASEMENT LOCATED IN SAGE
MEADOWS SUBDIVISION, PHASE 1-D,
TO THE CITY OF JONESBORO

AMENDED PETITION

Comes Sage Meadows Development, Inc., by and through
its attorneys, Mooney Law Firm, and petitions the City
Council of the City of Jonesboro, Arkansas, to abandon
the drainage easements which are described as follows,
to-wit:

The South 7.5 feet of Lot T-28, together with
the North 7.5 feet of Lot T-29, according to the
plat of Sage Meadows Phase 1-D, Jonesboro,
Arkansas, Craighead County, Arkansas, containing
in all 1,887 square feet or 0.043 acre, more or
less;

and

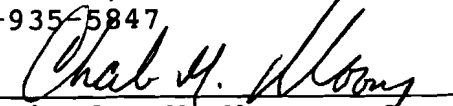
The North 7.5 feet of Lot T-10, together with
the South 7.5 feet of Lot T-11, according to the
plat of Sage Meadows Phase 1-D, Jonesboro,
Arkansas, Craighead County, Arkansas, containing
in all 1,875 square feet or 0.043 acre, more or
less,

Page 2

Plats of said property showing the portion of the drainage easements to be abandoned are attached hereto as Exhibit "A".

MOONEY LAW FIRM
P. O. Box 1423
Jonesboro, Arkansas 72403
501-935-5847

By



Charles M. Mooney, Sr.
Arkansas Bar No. 61020
Attorney for Sage
Meadows Development