

ATTACHED TO CONTRACT BETWEEN
 BNSF RAILWAY COMPANY
 AND
CITY OF JONESBORO
 JONESBORO, AR



EXHIBIT "A"

ATTACHED TO CONTRACT BETWEEN
BNSF RAILWAY COMPANY
AND

CITY OF JONESBORO, ARKANSAS

SCALE: 1 IN = 300 FT
HEARTLAND DIV.
THAYER SOUTH SUBDIV. L.S. 1001
DATE: 2/25/2022

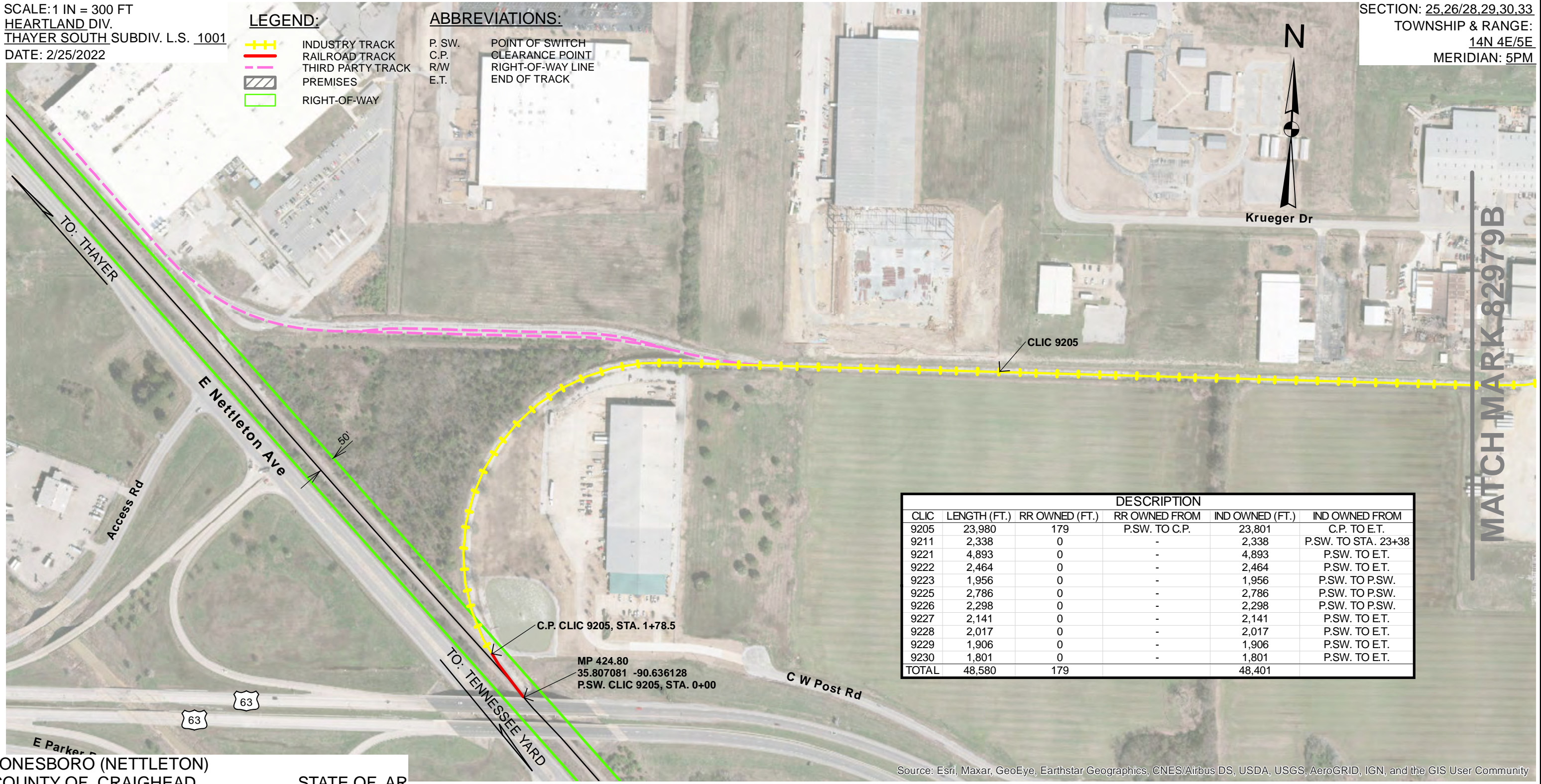
LEGEND:

	INDUSTRY TRACK
	RAILROAD TRACK
	THIRD PARTY TRACK
	PREMISES
	RIGHT-OF-WAY

ABBREVIATIONS:

P. SW.	POINT OF SWITCH
C.P.	CLEARANCE POINT
R/W	RIGHT-OF-WAY LINE
E.T.	END OF TRACK

SECTION: 25,26/28,29,30,33
TOWNSHIP & RANGE:
14N 4E/5E
MERIDIAN: 5PM



MATCH MARK 82979B

DESCRIPTION					
CLIC	LENGTH (FT.)	RR OWNED (FT.)	RR OWNED FROM	IND OWNED (FT.)	IND OWNED FROM
9205	23,980	179	P.S.W. TO C.P.	23,801	C.P. TO E.T.
9211	2,338	0	-	2,338	P.S.W. TO STA. 23+38
9221	4,893	0	-	4,893	P.S.W. TO E.T.
9222	2,464	0	-	2,464	P.S.W. TO E.T.
9223	1,956	0	-	1,956	P.S.W. TO P.S.W.
9225	2,786	0	-	2,786	P.S.W. TO P.S.W.
9226	2,298	0	-	2,298	P.S.W. TO P.S.W.
9227	2,141	0	-	2,141	P.S.W. TO E.T.
9228	2,017	0	-	2,017	P.S.W. TO E.T.
9229	1,906	0	-	1,906	P.S.W. TO E.T.
9230	1,801	0	-	1,801	P.S.W. TO E.T.
TOTAL	48,580	179		48,401	

JONESBORO (NETTLETON)
COUNTY OF CRAIGHEAD STATE OF AR

Source: Esri, Maxar, GeoEye, Earthstar Geographics, CNES/Airbus DS, USDA, USGS, AeroGRID, IGN, and the GIS User Community


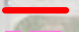
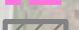
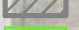
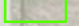
EXHIBIT "A"

ATTACHED TO CONTRACT BETWEEN
BNSF RAILWAY COMPANY
AND

CITY OF JONESBORO, ARKANSAS

SCALE: 1 IN = 300 FT
HEARTLAND DIV.
THAYER SOUTH SUBDIV. L.S. 1001
DATE: 2/25/2022

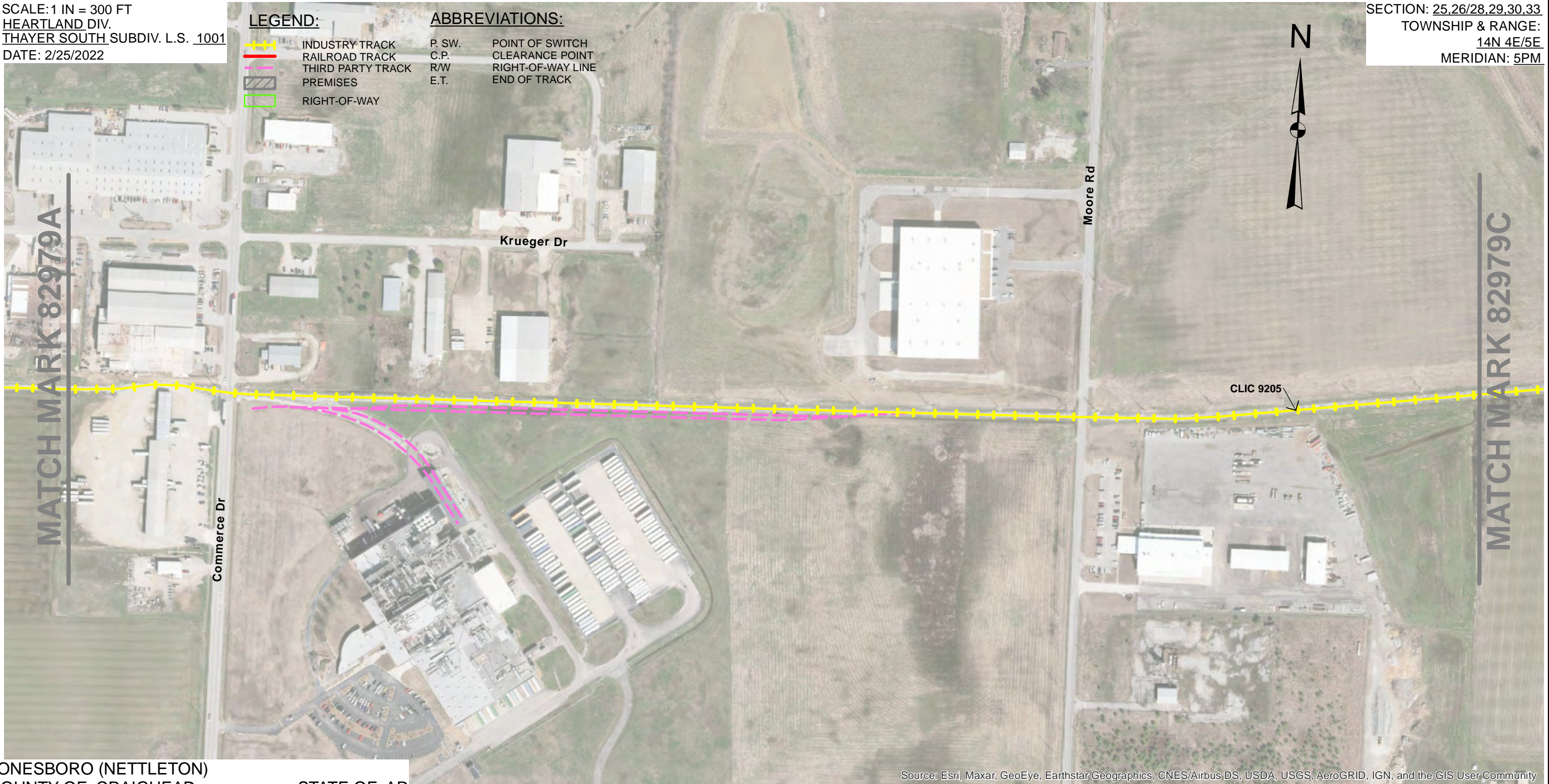
LEGEND:

-  INDUSTRY TRACK
-  RAILROAD TRACK
-  THIRD PARTY TRACK
-  PREMISES
-  RIGHT-OF-WAY

ABBREVIATIONS:

- P. SW. POINT OF SWITCH
- C.P. CLEARANCE POINT
- R/W RIGHT-OF-WAY LINE
- E.T. END OF TRACK

SECTION: 25,26/28,29,30,33
TOWNSHIP & RANGE:
14N 4E/5E
MERIDIAN: 5PM



JONESBORO (NETTLETON)
COUNTY OF CRAIGHEAD

STATE OF AR

Source: Esri, Maxar, GeoEye, Earthstar Geographics, CNES/Airbus DS, USDA, USGS, AeroGRID, IGN, and the GIS User Community



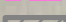

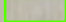
EXHIBIT "A"

ATTACHED TO CONTRACT BETWEEN
BNSF RAILWAY COMPANY
AND

CITY OF JONESBORO, ARKANSAS

SCALE: 1 IN = 300 FT
HEARTLAND DIV.
THAYER SOUTH SUBDIV. L.S. 1001
DATE: 2/25/2022

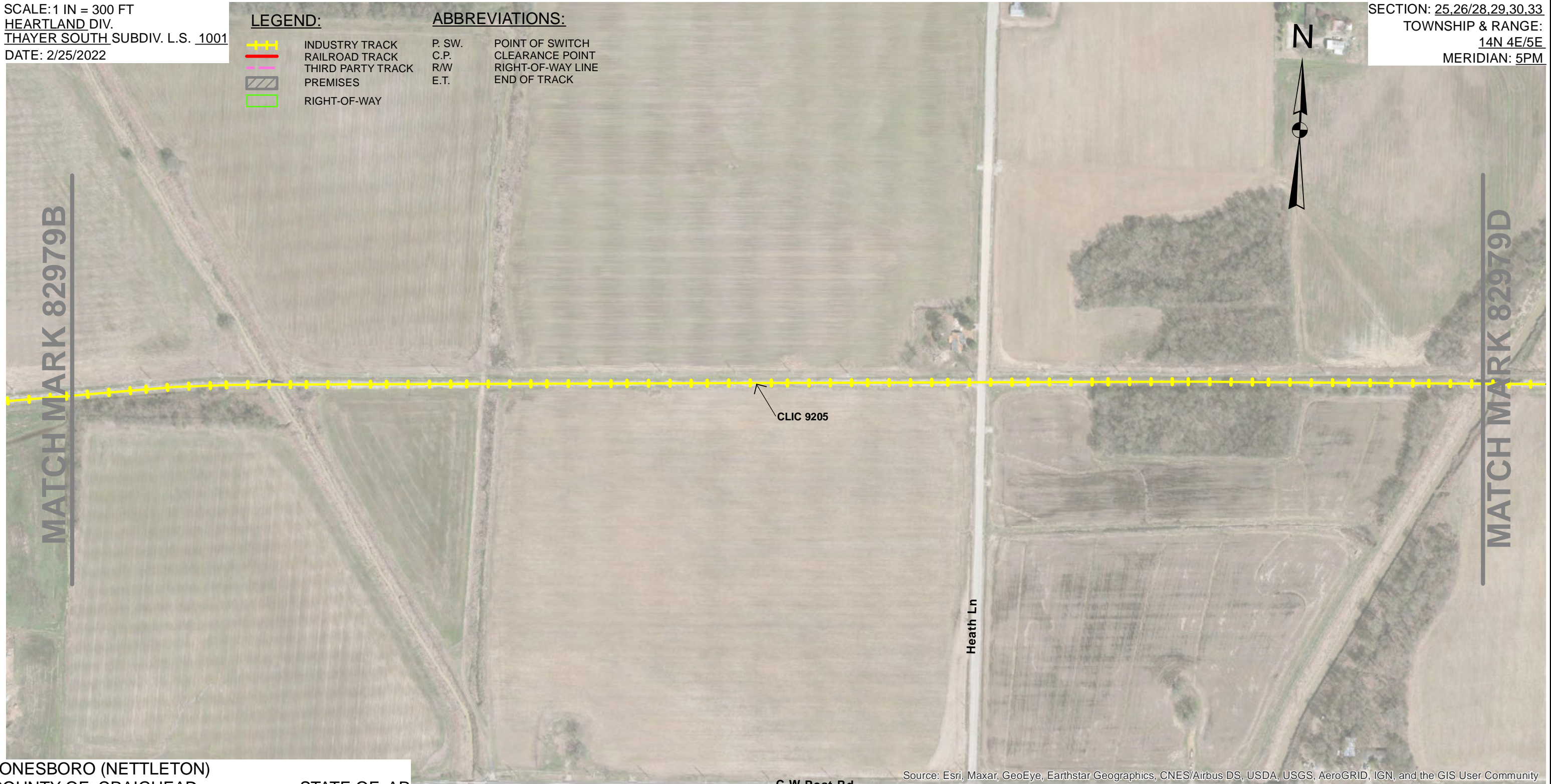
LEGEND:

-  INDUSTRY TRACK
-  RAILROAD TRACK
-  THIRD PARTY TRACK
-  PREMISES
-  RIGHT-OF-WAY

ABBREVIATIONS:

- | | |
|--------|-------------------|
| P. SW. | POINT OF SWITCH |
| C.P. | CLEARANCE POINT |
| R/W | RIGHT-OF-WAY LINE |
| E.T. | END OF TRACK |

SECTION: 25,26/28,29,30,33
TOWNSHIP & RANGE:
14N 4E/5E
MERIDIAN: 5PM



JONESBORO (NETTLETON)
COUNTY OF CRAIGHEAD

STATE OF AR

C W Post Rd

Source: Esri, Maxar, GeoEye, Earthstar Geographics, CNES/Airbus DS, USDA, USGS, AeroGRID, IGN, and the GIS User Community


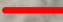
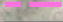

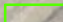
EXHIBIT "A"

ATTACHED TO CONTRACT BETWEEN
BNSF RAILWAY COMPANY
AND

CITY OF JONESBORO, ARKANSAS

SCALE: 1 IN = 300 FT
HEARTLAND DIV.
THAYER SOUTH SUBDIV. L.S. 1001
DATE: 2/25/2022

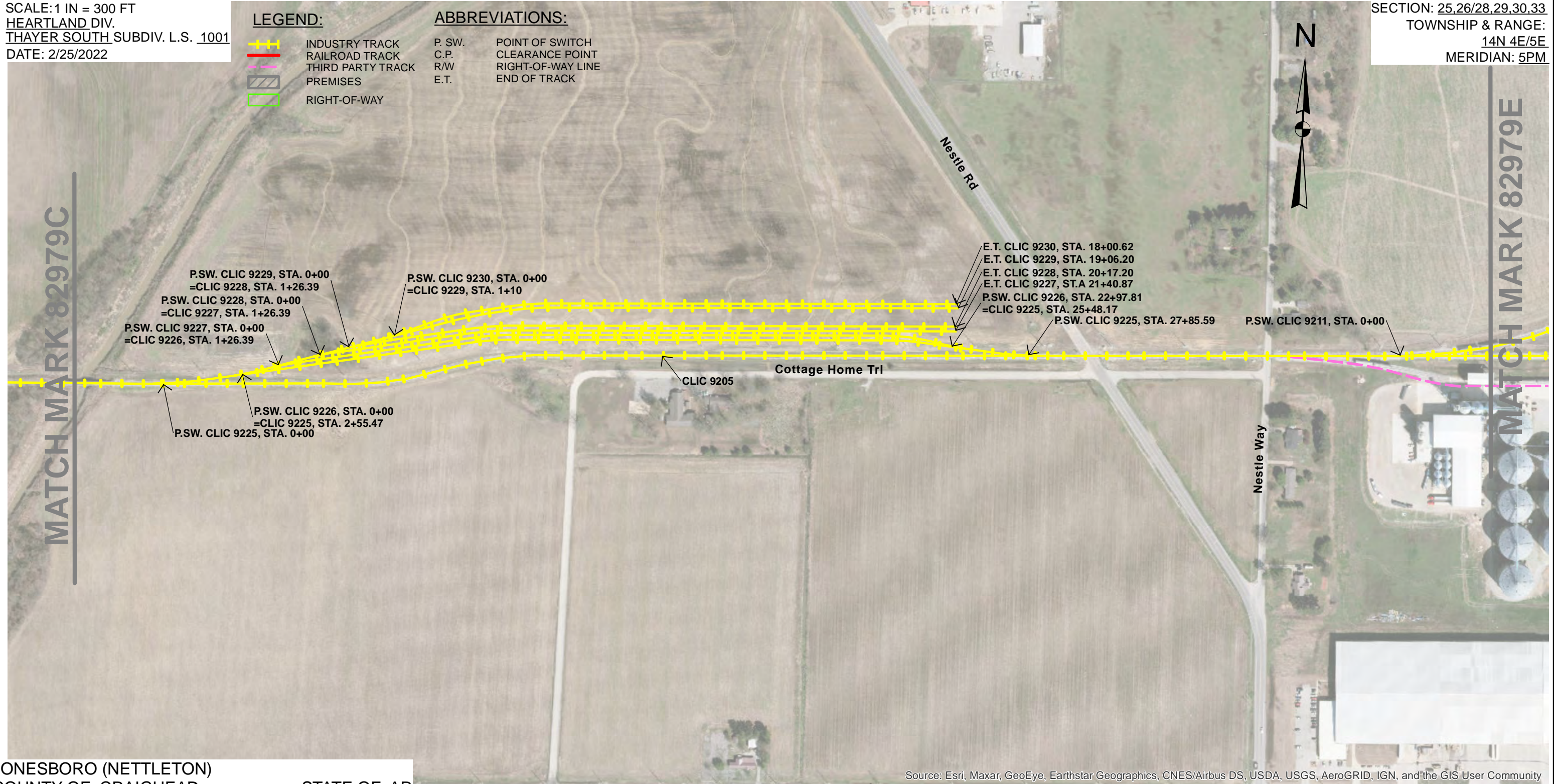
LEGEND:

-  INDUSTRY TRACK
-  RAILROAD TRACK
-  THIRD PARTY TRACK
-  PREMISES
-  RIGHT-OF-WAY

ABBREVIATIONS:

- P. SW. POINT OF SWITCH
- C.P. CLEARANCE POINT
- R/W RIGHT-OF-WAY LINE
- E.T. END OF TRACK

SECTION: 25,26/28,29,30,33
TOWNSHIP & RANGE:
14N 4E/5E
MERIDIAN: 5PM



JONESBORO (NETTLETON)
COUNTY OF CRAIGHEAD

STATE OF AR

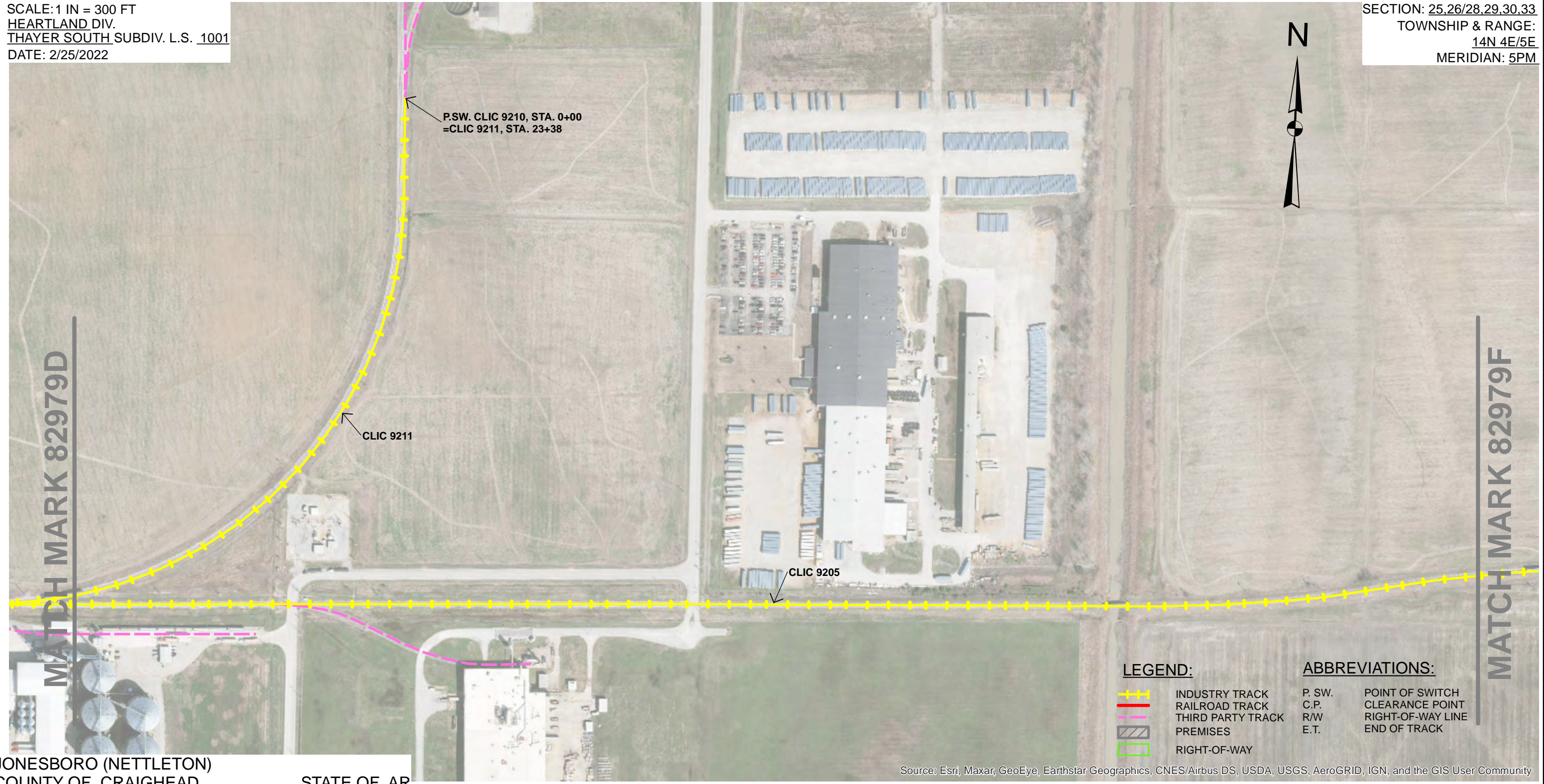
Source: Esri, Maxar, GeoEye, Earthstar Geographics, CNES/Airbus DS, USDA, USGS, AeroGRID, IGN, and the GIS User Community

EXHIBIT "A"
ATTACHED TO CONTRACT BETWEEN
BNSF RAILWAY COMPANY
AND

CITY OF JONESBORO, ARKANSAS

SCALE: 1 IN = 300 FT
HEARTLAND DIV.
THAYER SOUTH SUBDIV. L.S. 1001
DATE: 2/25/2022

SECTION: 25,26/28,29,30,33
TOWNSHIP & RANGE:
14N 4E/5E
MERIDIAN: 5PM



JONESBORO (NETTLETON)
COUNTY OF CRAIGHEAD

STATE OF AR

LEGEND:

- INDUSTRY TRACK
- RAILROAD TRACK
- THIRD PARTY TRACK
- PREMISES
- RIGHT-OF-WAY

ABBREVIATIONS:

- P. SW. POINT OF SWITCH
- C.P. CLEARANCE POINT
- R/W RIGHT-OF-WAY LINE
- E.T. END OF TRACK

Source: Esri, Maxar, GeoEye, Earthstar Geographics, CNES/Airbus DS, USDA, USGS, AeroGRID, IGN, and the GIS User Community


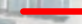
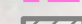
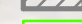
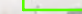
EXHIBIT "A"
ATTACHED TO CONTRACT BETWEEN
BNSF RAILWAY COMPANY
AND

CITY OF JONESBORO, ARKANSAS

SCALE: 1 IN = 300 FT
HEARTLAND DIV.
THAYER SOUTH SUBDIV. L.S. 1001
DATE: 2/25/2022

MATCH MARK 82979G

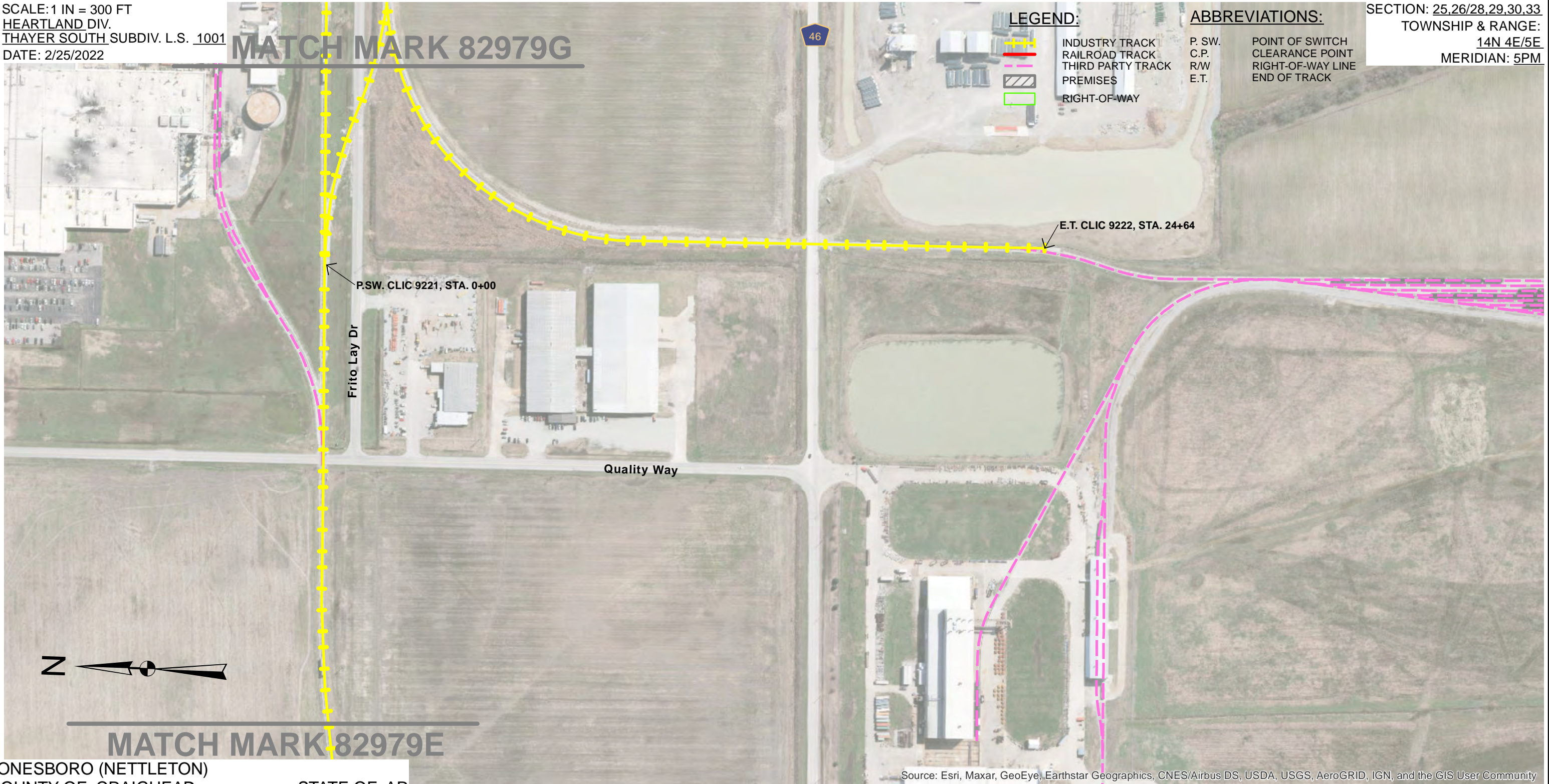
LEGEND:

-  INDUSTRY TRACK
-  RAILROAD TRACK
-  THIRD PARTY TRACK
-  PREMISES
-  RIGHT-OF-WAY

ABBREVIATIONS:

- P. SW. POINT OF SWITCH
- C.P. CLEARANCE POINT
- R/W RIGHT-OF-WAY LINE
- E.T. END OF TRACK

SECTION: 25,26/28,29,30,33
TOWNSHIP & RANGE:
14N 4E/5E
MERIDIAN: 5PM



MATCH MARK 82979E

JONESBORO (NETTLETON)
COUNTY OF CRAIGHEAD

STATE OF AR

Source: Esri, Maxar, GeoEye, Earthstar Geographics, CNES/Airbus DS, USDA, USGS, AeroGRID, IGN, and the GIS User Community

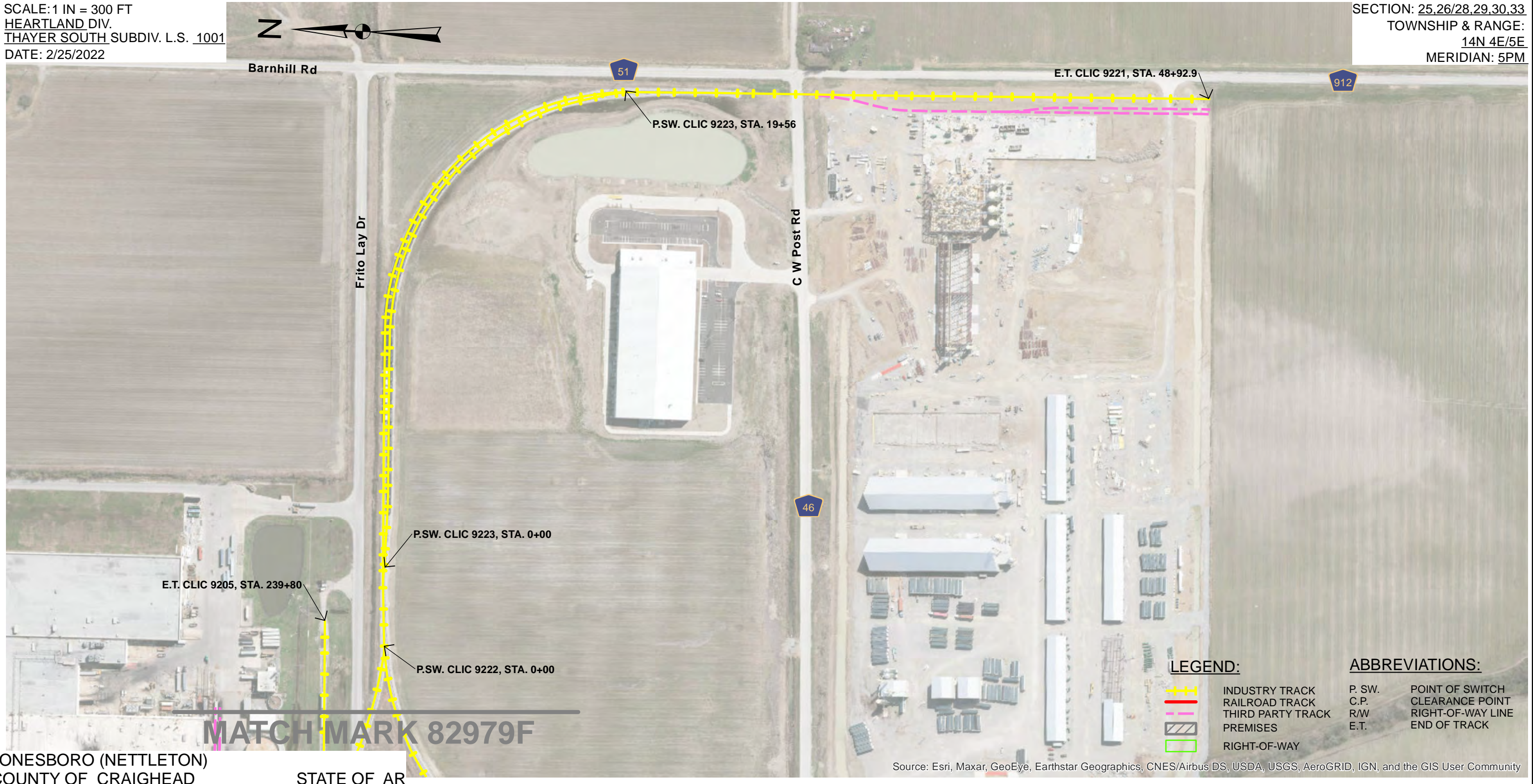
EXHIBIT "A"

ATTACHED TO CONTRACT BETWEEN
BNSF RAILWAY COMPANY
AND

CITY OF JONESBORO, ARKANSAS

SCALE: 1 IN = 300 FT
HEARTLAND DIV.
THAYER SOUTH SUBDIV. L.S. 1001
DATE: 2/25/2022

SECTION: 25,26/28,29,30,33
TOWNSHIP & RANGE:
14N 4E/5E
MERIDIAN: 5PM



LEGEND:

- INDUSTRY TRACK
- RAILROAD TRACK
- THIRD PARTY TRACK
- PREMISES
- RIGHT-OF-WAY

ABBREVIATIONS:

- P. SW. POINT OF SWITCH
- C.P. CLEARANCE POINT
- R/W RIGHT-OF-WAY LINE
- E.T. END OF TRACK

JONESBORO (NETTLETON)
COUNTY OF CRAIGHEAD

STATE OF AR

Source: Esri, Maxar, GeoEye, Earthstar Geographics, CNES/Airbus DS, USDA, USGS, AeroGRID, IGN, and the GIS User Community