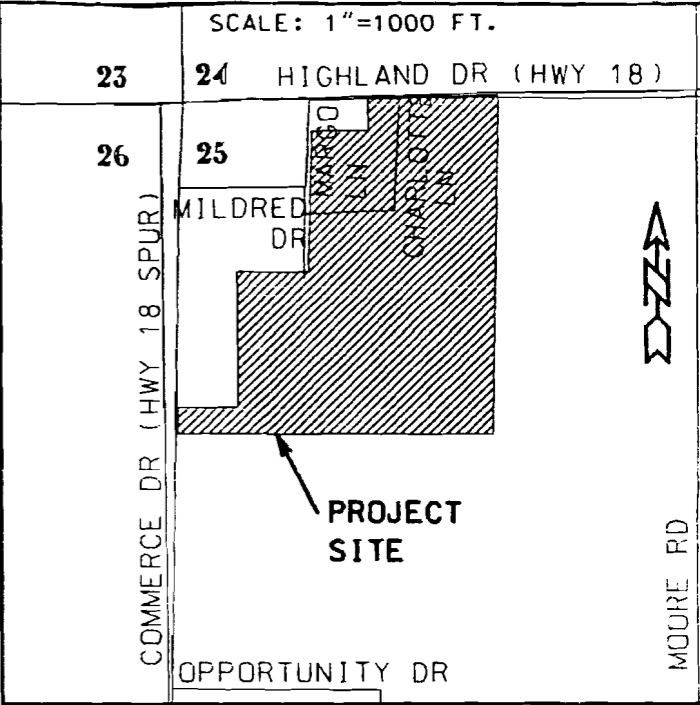
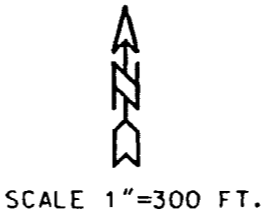


**EXISTING AG-1 ZONING  
REQUESTED I-1 ZONING**



## DACUS INDUSTRIAL SUBDIVISION

A REPLAT OF LOTS 7-10, BLOCK 'B', LOTS 2-10,  
BLOCK 'C', LOTS 1-10, BLOCK 'D' AND LOTS 1-14,  
BLOCK 'E' OF LAZY ACRES SUBDIVISION

**OWNER'S CERTIFICATION:**

WE HEREBY CERTIFY THAT WE ARE THE OWNERS OF THE PROPERTY SHOWN AND DESCRIBED HEREDN. THAT WE ADOPT THE PLAN OF SUBDIVISION AND DEDICATE PERPETUAL USE OF ALL STREETS AND EASEMENTS AS NOTED.

*[Handwritten Signature]*

**HNE** ENGINEERS - SURVEYORS  
2311 E. NETTLETON AVE.  
JONESBORO, AR 72401  
HAMMAN NEWELL ENGINEERING (501) 932-7880

REZONING PLAT  
FOR  
MAX DACUS, SR.  
JONESBORO, ARKANSAS