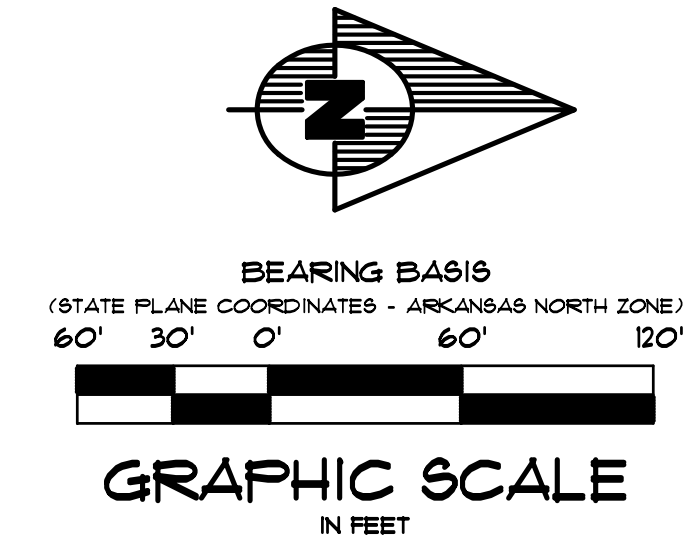
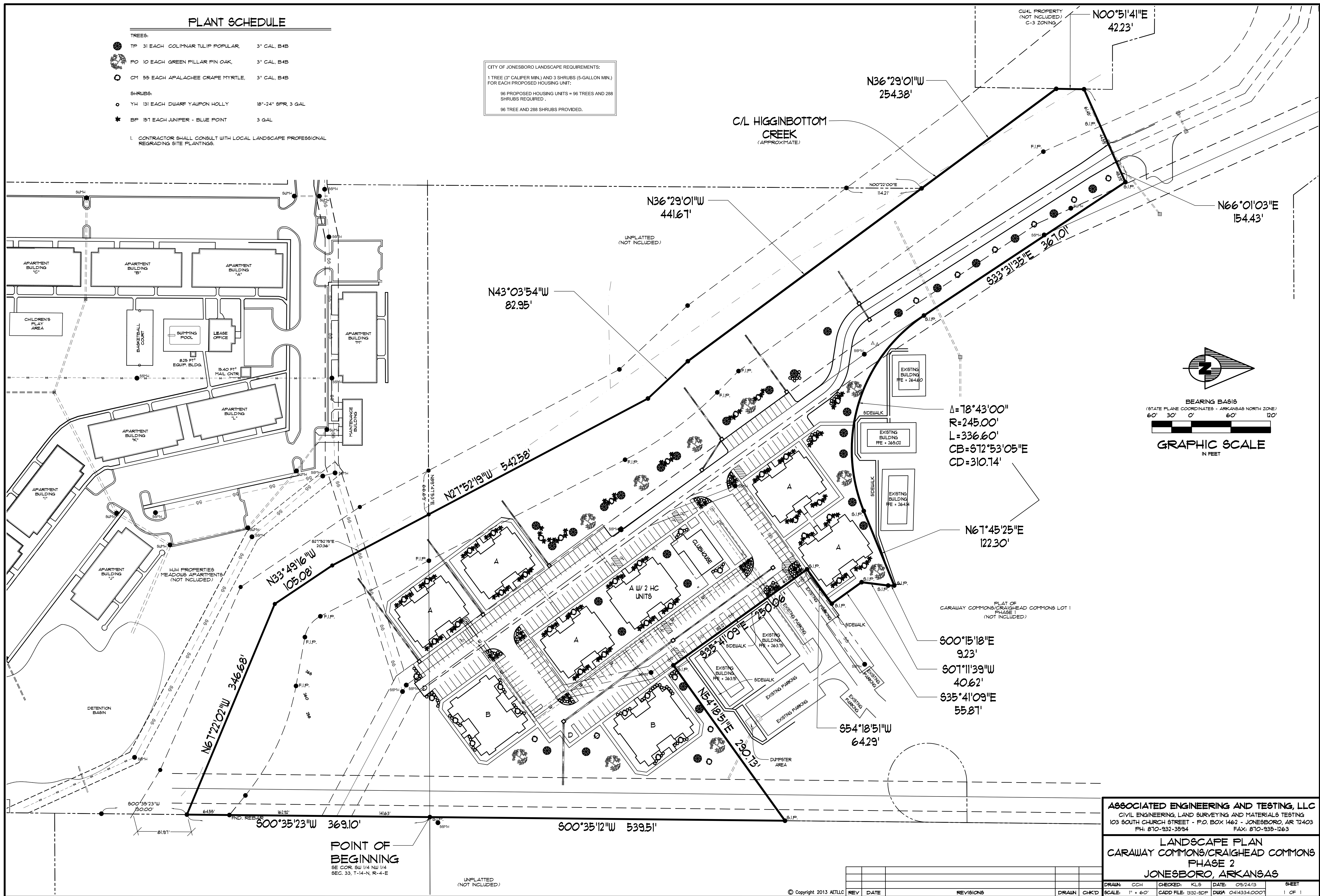


PLANT SCHEDULE

- TREES:
- TP 31 EACH COLUMNAR TULIP POPULAR, 3" CAL, B4B
 - PO 10 EACH GREEN PILLAR PIN OAK, 3" CAL, B4B
 - CM 55 EACH APALACHEE GRAPE MYRTLE, 3" CAL, B4B
- SHRUBS:
- YH 131 EACH DWARF YAUPON HOLLY, 18"-24" SPR, 3 GAL
 - BP 151 EACH JUNIPER - BLUE POINT, 3 GAL
1. CONTRACTOR SHALL CONSULT WITH LOCAL LANDSCAPE PROFESSIONAL REGRADING SITE PLANTINGS.

CITY OF JONESBORO LANDSCAPE REQUIREMENTS:
 1 TREE (3" CALIPER MIN.) AND 3 SHRUBS (5-GALLON MIN.) FOR EACH PROPOSED HOUSING UNIT.
 96 PROPOSED HOUSING UNITS = 96 TREES AND 288 SHRUBS REQUIRED.
 96 TREE AND 288 SHRUBS PROVIDED.



$\Delta = 78^{\circ}43'00''$
 $R = 245.00'$
 $L = 336.60'$
 $CB = 672^{\circ}53'05''E$
 $CD = 310.74'$

$N67^{\circ}45'25''E$
 122.30'

$S00^{\circ}15'18''E$
 9.23'
 $S07^{\circ}11'39''W$
 40.62'
 $S35^{\circ}41'03''E$
 55.81'

ASSOCIATED ENGINEERING AND TESTING, LLC
 CIVIL ENGINEERING, LAND SURVEYING AND MATERIALS TESTING
 103 SOUTH CHURCH STREET - P.O. BOX 1462 - JONESBORO, AR 72403
 PH: 870-932-3594 FAX: 870-935-1263

LANDSCAPE PLAN
CARAWAY COMMONS/CRAIGHEAD COMMONS
PHASE 2
JONESBORO, ARKANSAS

DRAWN: CCH	CHECKED: KLS	DATE: 09/24/13	SHEET
SCALE: 1" = 60'	CADD FILE: 1312-BDP	DWG#: 0414334.0001	1 OF 1