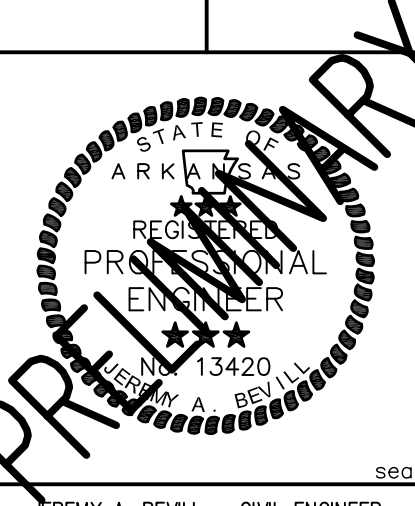


## CIVIL SITE PLAN

A PART OF THE NORTHEAST QUARTER OF THE SOUTHWEST QUARTER OF SECTION 28, TOWNSHIP 14 NORTH, RANGE 4 EAST, JONESBORO, CRAIGHEAD COUNTY, ARKANSAS



JEREMY A. BEVELL - CIVIL ENGINEER  
ARKANSAS - 13420



Haywood, Kenward, Bare, and Associates, Inc  
ARKANSAS - 234

CLIENT:  
G & P DEVELOPMENT

COPYRIGHT 2011, ALL RIGHTS RESERVED

REVISIONS

DATE	BY	DESCRIPTION

PROJECT NO:  
G022-0001

DRAWN BY: JBB  
CHECKED BY: JAB

SHEET: 4 OF 11  
SCALE: 1"=50'

DATE: 09/08/2011  
DRAWING NO: 31-62

### GENERAL NOTES:

- AFTER COMPLETION OF CONSTRUCTION THE NEW RUNOFF COEFFICIENT SHALL BE 0.90.
- THE STORM WATER POLLUTION PREVENTION MEASURES PRESENTED ON THIS PLAN AND ITS ASSOCIATED REPORT ARE INTENDED TO MINIMIZE POLLUTANT LOADS OCCURRING IN STORM WATER DISCHARGES, FROM THE CONSTRUCTION SITE. THE CONTROL MEASURES SHALL BE INSTALLED AND MAINTAINED BEYOND THE COMPLETION OF ALL CONSTRUCTION ACTIVITIES AND UNTIL 100% OF THE SITE HAS BEEN STABILIZED.
- IMPLEMENTATION, INSTALLATION, APPLICATION AND MAINTENANCE OF THE STORM WATER POLLUTION PREVENTION CONTROL MEASURES SHALL BE IN COMPLIANCE WITH APPLICABLE STATE OR LOCAL WASTE DISPOSAL, SANITARY SEWER, OR SEPTIC SYSTEM REGULATIONS.
- ALL REGULATORY PERMITS MUST BE OBTAINED FROM THE CITY OF JONESBORO PRIOR TO THE COMMENCEMENT OF SOIL DISTURBANCE.

### EROSION AND SEDIMENT CONTROL NOTES:

- INSTALL EROSION AND SEDIMENT CONTROL MEASURES AND CONSTRUCTION ENTRANCES AT LOCATIONS AS INDICATED ON PLANS PRIOR TO EARTHWORK.
- ALL EROSION AND SEDIMENT CONTROL MEASURES SHALL BE LOCATED AND MAINTAINED SUCH THAT THE LOCATION DOES NOT INTERFERE WITH CONSTRUCTION ACTIVITIES.
- REFER TO THE CONSTRUCTION STORMWATER POLLUTION PREVENTION PLAN (SWPPP) REPORT FOR IMPLEMENTATION, INSTALLATION, MAINTENANCE AND/OR APPLICATION REQUIREMENTS AND SEQUENCES.
- CONTRACTOR SHALL BE RESPONSIBLE TO MAINTAIN ALL EROSION AND SEDIMENT CONTROL MEASURES ON SITE AND AT LEAST 20' FROM THE DISTURBED AREAS.
- DRAINAGE INLET SEDIMENT CONTROL SHALL BE PLACED AND MAINTAINED AT EACH INLET.
- INSTRUCTION/DIRECTION OF THE INSPECTOR SHALL PREVAIL OVER THE CONSTRUCTION SWPPP PLAN.

### MAINTENANCE AND OPERATION NOTES:

- AN INSPECTION SHALL BE MADE EVERY 7 DAYS.
- ALL OBSERVED DEFICIENCIES IN BEST MANAGEMENT PRACTICES (BMP's) WILL BE RECORDED.
- SEDIMENT SHALL BE REMOVED BEHIND SILT FENCING OR ROCK CHECK DAMS ONCE SEDIMENT REACHES 1/3 THE HEIGHT OF THE SILT FENCE OR CHECK DAM.

### PROFESSIONAL CERTIFICATION:

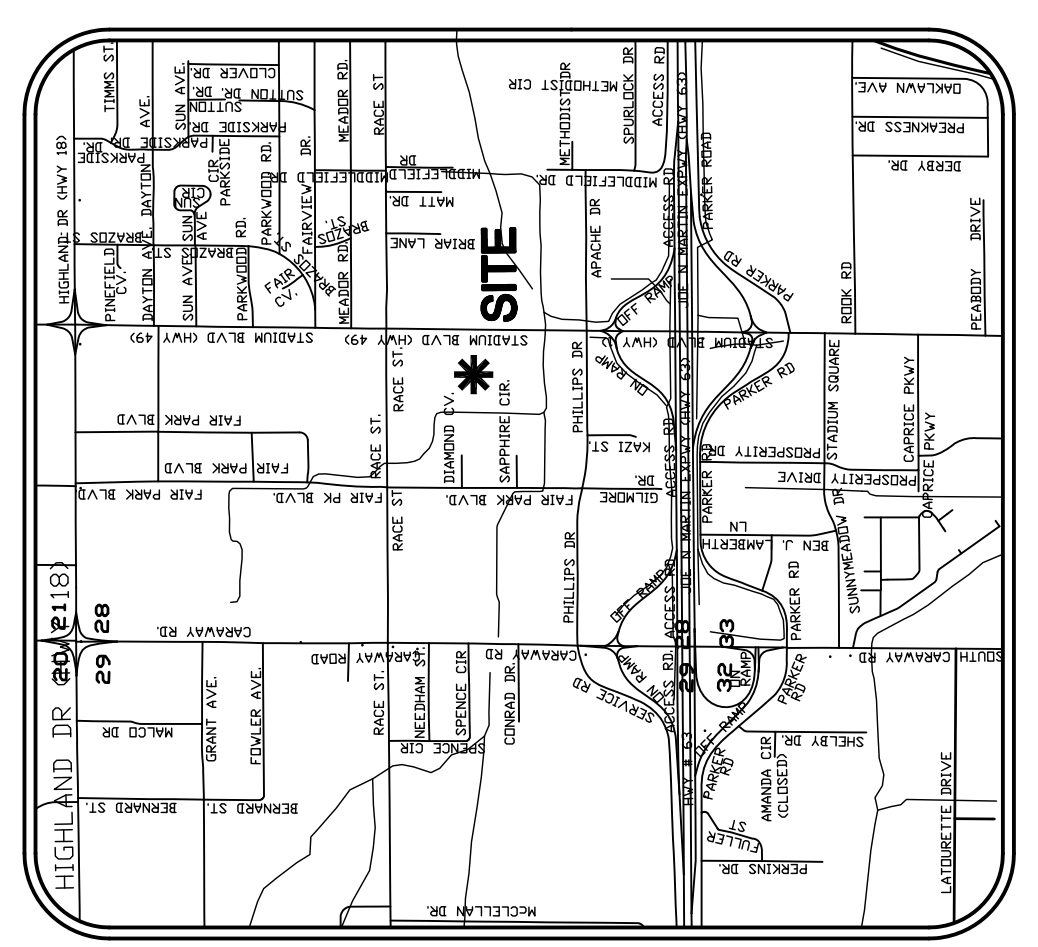
I CERTIFY UNDER PENALTY OF LAW THAT THIS DOCUMENT AND ALL ATTACHMENTS WERE PREPARED UNDER MY DIRECTION OR SUPERVISION IN ACCORDANCE WITH A SYSTEM DESIGNED TO ASSURE THAT QUALIFIED PERSONNEL PROPERLY GATHER AND EVALUATE THE INFORMATION SUBMITTED. BASED ON MY INQUIRY OF THE PERSON OR PERSONS WHO MANAGED THE SYSTEMS, OR THOSE PERSONS DIRECTLY RESPONSIBLE FOR GATHERING THE INFORMATION, THE INFORMATION SUBMITTED IS, TO THE BEST OF MY KNOWLEDGE AND BELIEF, TRUE, ACCURATE, AND COMPLETE. I AM AWARE THAT THERE ARE SIGNIFICANT PENALTIES FOR SUBMITTING FALSE INFORMATION, INCLUDING THE POSSIBILITY OF FINE AND IMPRISONMENT FOR KNOWING VIOLATIONS.

JEREMY A. BEVELL, P.E. 13420 PROJECT ENGINEER

### OWNER/CONTRACTOR CERTIFICATION:

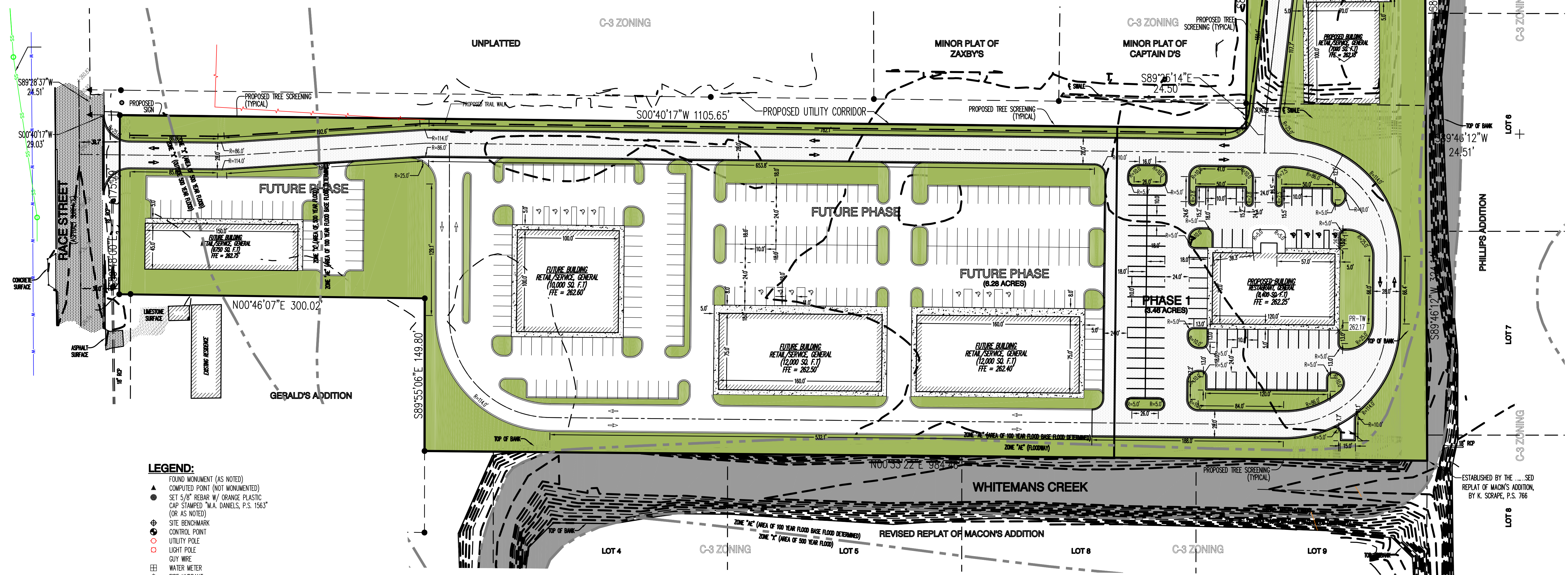
I CERTIFY UNDER PENALTY OF LAW THAT I UNDERSTAND THE TERMS AND CONDITIONS OF THE GENERAL NATIONAL POLLUTANT DISCHARGE ELIMINATION SYSTEM (NPDES) PERMIT THAT AUTHORIZES THE STORM WATER DISCHARGES ASSOCIATED WITH INDUSTRIAL ACTIVITY FROM THE CONSTRUCTION SITE IDENTIFIED AS PART OF THIS CERTIFICATION.

OWNER/CONTRACTOR \_\_\_\_\_ DATE \_\_\_\_\_



VICINITY MAP  
(NOT TO SCALE)

U.S. HIGHWAY NO. 49  
STADIUM BOULEVARD  
(ASPHALT SURFACE)



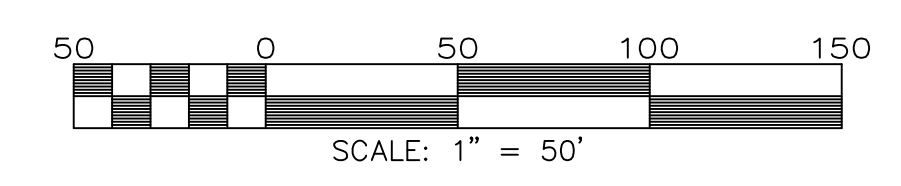
- LEGEND:**
- ▲ FOUND MONUMENT (AS NOTED)
  - COMPUTED POINT (NOT MONUMENTED)
  - SET 5/8" REBAR W/ ORANGE PLASTIC CAP STAMPED "M.A. DANIELS, P.S. 1563" (OR AS NOTED)
  - ⊕ SITE BENCHMARK
  - CONTROL POINT
  - UTILITY POLE
  - LIGHT POLE
  - GUY WIRE
  - ⊖ WATER METER
  - FIRE HYDRANT
  - SPRINKLER CONTROL VALVE
  - SANITARY SEWER MANHOLE
  - GAS METER
  - TELEPHONE PEDESTAL
  - TREE (AS NOTED)
  - MAILBOX
  - OVERHEAD ELECTRIC LINE
  - WATER LINE
  - SANITARY SEWER LINE
  - GAS LINE
  - TELECOMMUNICATIONS LINE

**PHASE 1 COMPLIANCE TABLE:**

	PLANNED	REQUIRED
PARKING (TOTAL)	122	120
COMMON OPEN SPACE	38%	15%
	1.31 ACRES	0.52 ACRES

**FUTURE PHASE COMPLIANCE TABLE:**

	PLANNED	REQUIRED
PARKING (TOTAL)	239	163
COMMON OPEN SPACE	26%	15%
	1.61 ACRES	0.94 ACRES



## CIVIL SITE PLAN