



City of Jonesboro  
Engineering Department  
Municipal Building  
PO Box 1845  
300 S. Church  
Jonesboro, AR 72403  
Phone: (870) 932-2438

January 25, 2019

City of Jonesboro  
P.O. Box 1845  
Jonesboro, AR 72403  
Attn: Donna Jackson

RE: Abandonment of Drainage Easement  
Twin Oaks Subdivision, Lot 17, Block "A", Jonesboro, Arkansas

Dear Ms. Jackson:

The City of Jonesboro Engineering and Planning Departments concur with the abandonment of the north seven and one half (7.5') feet of the fifteen (15') foot drainage easement, parallel to the south property line of Lot 17, Block "A" of Twin Oaks Subdivision, as recorded in the Circuit Clerk's office of Craighead County, Book "C" Page 280 in the Craighead County Courthouse located in Jonesboro, Arkansas.

Please call if more information is needed.

Sincerely,

A handwritten signature in black ink, appearing to read "CL", is written above the name of the City Engineer.

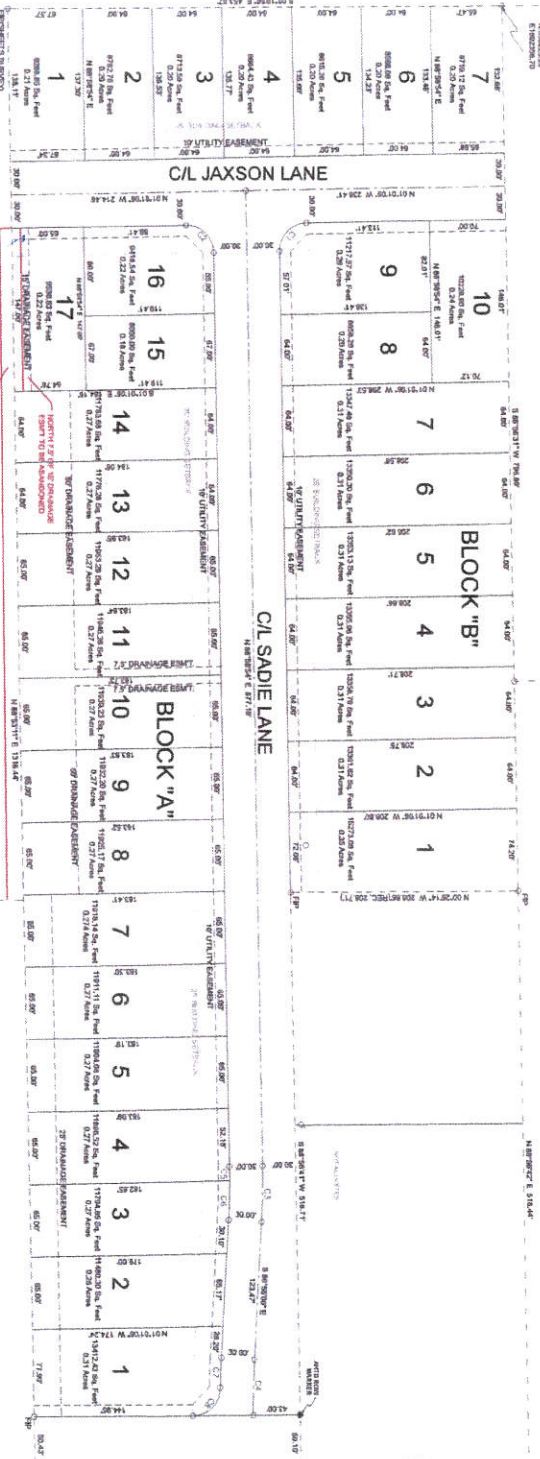
Craig Light, PE, CFM  
City Engineer

A handwritten signature in blue ink, appearing to read "Derrel Smith", is written above the name of the City Planner.

Derrel Smith  
City Planner

TO BE OPENED BY THE SURVEYOR  
 IN THE PRESENCE OF THE COUNTY CLERK  
 OF THE NORTH-EAST QUARTER OF SECTION  
 36, TOWNSHIP 14 NORTH, RANGE 3 EAST,  
 CRAIGHEAD COUNTY, ARKANSAS  
 AND THE COUNTY CLERK OF SAID COUNTY  
 AT THE OFFICE OF SAID COUNTY CLERK  
 IN WOODLAND HEIGHTS

ASSOCIATED ENGINEERS SURVEY  
 BOOK "H" AT PAGE 144  
 4/17/2003



LOT 1  
 SARTIN MINOR PLAT  
 PLAT "C" @ PAGE 187

SAINT MATTHEW THE EVANGELIST  
 DEED BOOK 743 @ PAGE 968 & 970



VICINITY MAP  
 SITE

STATEMENT OF CERTIFICATION  
 I, THE SURVEYOR, HAVE BEEN DULY SWORN TO BY THE ABOVE  
 DESCRIBED PROPERTY IN ACCORDANCE WITH CONSTITUTIONAL PROVISIONS  
 THAT MAKE ME AN OFFICIAL SURVEYING SERVICE  
 JOHNSBORO, ARKANSAS 72401

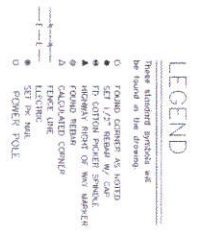
STATEMENT OF WORK  
 I, THE SURVEYOR, HAVE BEEN DULY SWORN TO BY THE ABOVE  
 DESCRIBED PROPERTY IN ACCORDANCE WITH CONSTITUTIONAL PROVISIONS  
 THAT MAKE ME AN OFFICIAL SURVEYING SERVICE  
 JOHNSBORO, ARKANSAS 72401

STATEMENT OF WORK  
 I, THE SURVEYOR, HAVE BEEN DULY SWORN TO BY THE ABOVE  
 DESCRIBED PROPERTY IN ACCORDANCE WITH CONSTITUTIONAL PROVISIONS  
 THAT MAKE ME AN OFFICIAL SURVEYING SERVICE  
 JOHNSBORO, ARKANSAS 72401

LOT NO.	ACREAGE	AREA (SQ. FT.)	PERCENTAGE OF TOTAL
1	0.237	10,270	0.237
2	0.237	10,270	0.237
3	0.237	10,270	0.237
4	0.237	10,270	0.237
5	0.237	10,270	0.237
6	0.237	10,270	0.237
7	0.237	10,270	0.237
8	0.237	10,270	0.237
9	0.237	10,270	0.237
10	0.237	10,270	0.237
11	0.237	10,270	0.237
12	0.237	10,270	0.237
13	0.237	10,270	0.237
14	0.237	10,270	0.237
15	0.237	10,270	0.237
16	0.237	10,270	0.237
17	0.237	10,270	0.237

FLOOD RESISTANCE NOTE: By questions relating work  
 of the Flood Resistance Note, Contractor shall be  
 responsible for providing Flood Resistance Note. Flood  
 Resistance Note shall be submitted by an Engineer  
 or Architect to the County Clerk of the County  
 in a separate sheet attached to the plat.

OWNER'S CERTIFICATION  
 WE HEREBY CERTIFY THAT WE, THE OWNERS OF THE PROPERTY SHOWN AND DESCRIBED HEREON, AND  
 AGENTS AS NOTED AND WE HEREBY CERTIFY THAT WE HAVE READ AND APPROVE THE FOLLOWING  
 STATEMENT:



RECORD PLAT

TWIN OAKS SUBDIVISION

A PART OF THE NORTHEAST QUARTER OF THE SOUTHEAST  
 QUARTER OF SECTION 36, TOWNSHIP 14 NORTH, RANGE 3 EAST,  
 CRAIGHEAD COUNTY, ARKANSAS

RECORD PLAT



H&S HIME PROFESSIONAL  
 SURVEYING SERVICES

2618 SO. CARAWAY RD., SUITE "D"  
 JOHNSBORO, ARKANSAS 72401

PHONE: 870-872-1286  
 hshime\_bulch@hshime.com