



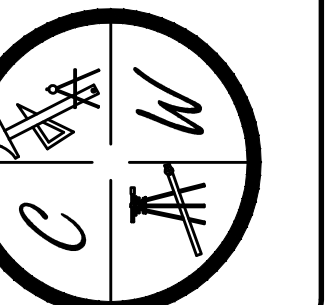
BARRINGTON PARK PHASE IX
ANNADALE DR. & ANNADALE COURT
JONESBORO, AR
PLAN & PROFILE

DATE: 11/30/15

REV:

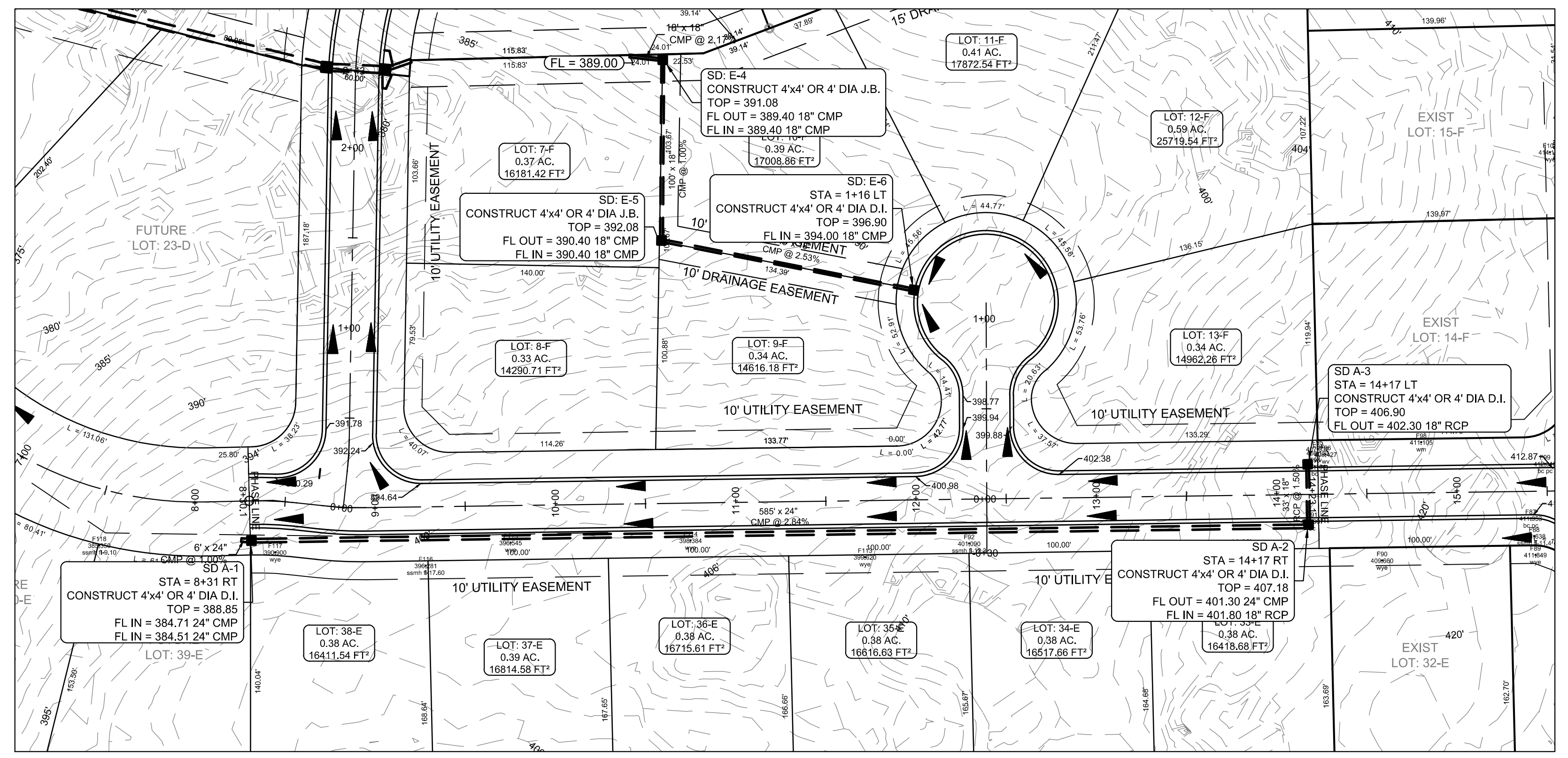
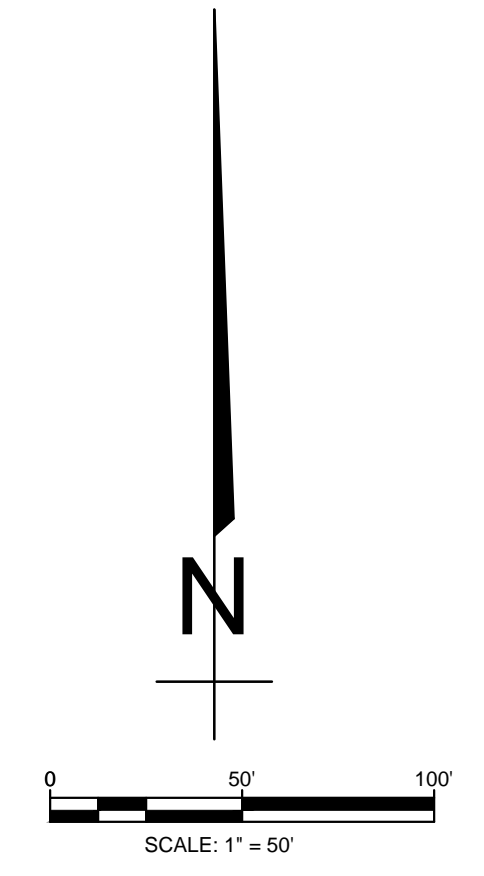
DRAWN BY: BGW

CARLOS WOOD, P.E.
ENGINEERING CONSULTANT
148 CR 375
BONO, AR 72416
PHONE/FAX: (870) 972-8335
EMAIL: WOODENGR@SBCGLOBAL.NET
WEBSITE: WWW.WOODENGR.COM



LEGEND

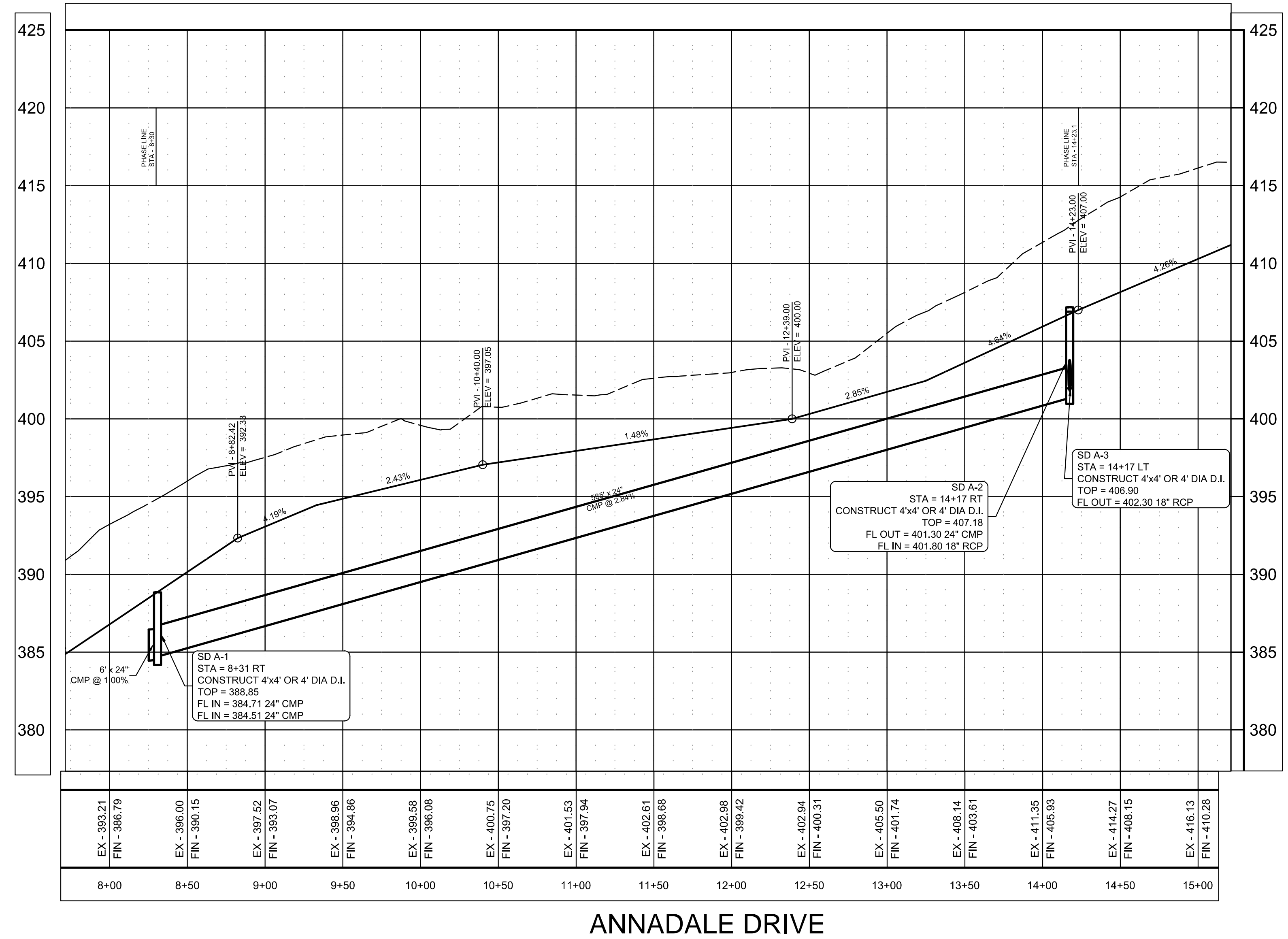
- CURB
- EXISTING CONTOUR
- PROPOSED CONTOUR
- STORM DRAIN INLET
- STORM DRAIN PIPE



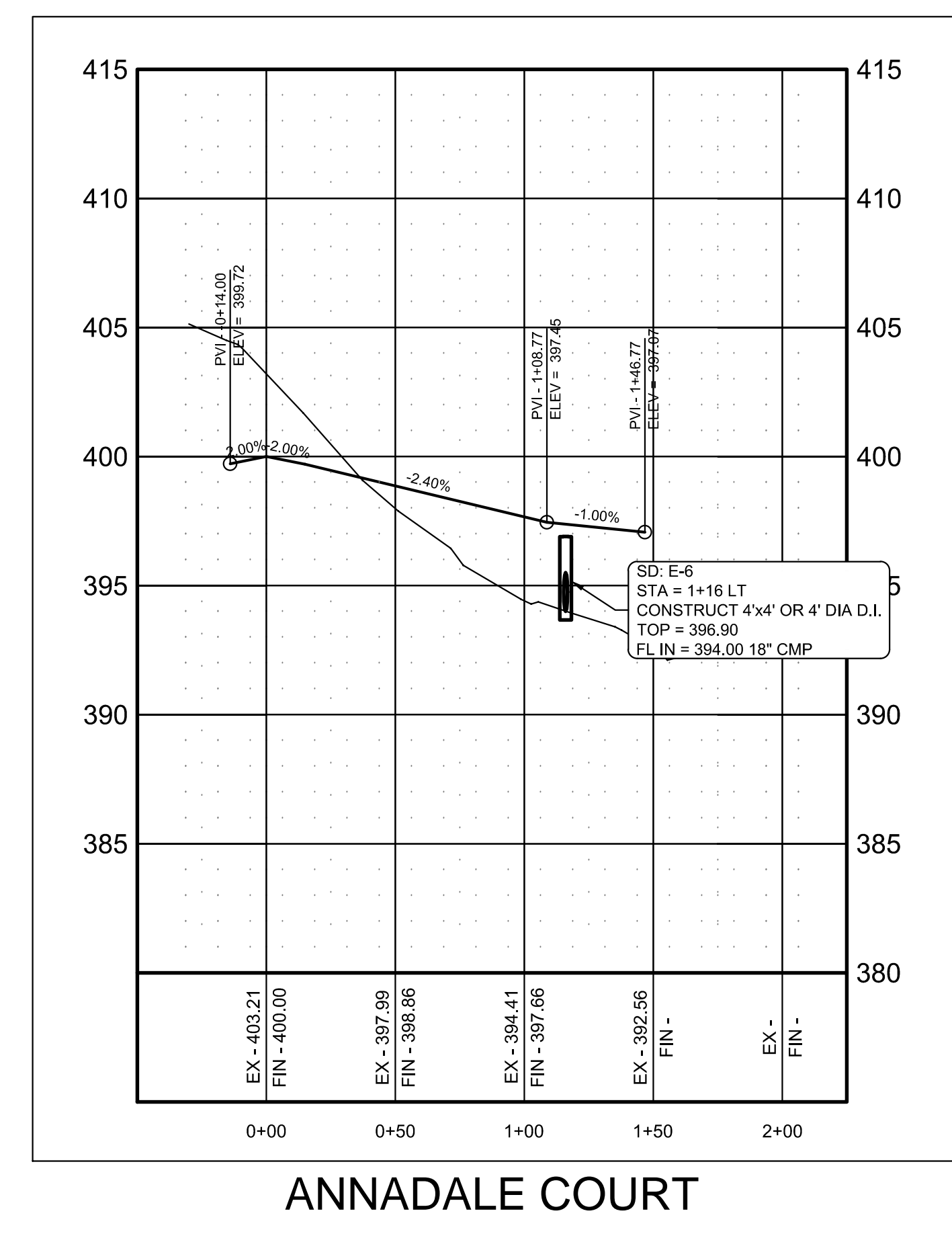
PIPE NOTE:

ALL PIPE SHALL MEET THE FOLLOWING STANDARDS.

- ALUMINIZED STEEL TYPE 2 STEEL PIPE
 - ASTM A-929
 - ASTM A-760
- RCP CLASS III OR CLASS IV
 - ASTM C-76
 - ASTM C-506
 - ASTM C-507



PROFILE SCALE:
HORIZONTAL: 1" = 50'
VERTICAL: 1" = 5'



ANNADALE COURT