



City of Jonesboro
Engineering Department
Municipal Building
PO Box 1845
300 S. Church
Jonesboro, AR 72403
Phone: (870) 932-2438

December 8, 2017

George Hamman
Civilogic
203 Southwest Drive
Jonesboro, AR 72401

Re: 2324 Red Wolf Boulevard
Requested Street Right-of-Way and Easement Abandonment
Civilogic File Number: 115149

Dear Hamman:

The City of Jonesboro Engineering and Planning Departments concur with the abandonment of the right-of-way and easement located at 2324 Red Wolf Boulevard, as described in the attached abandonment plat page one, dated December 02, 2015.

Please call if more information is needed.

Sincerely,

Craig Light, PE, CFM
City Engineer

Derrrel Smith
City Planner

Civilogic

203 Southwest Drive
Jonesboro, AR 72401

e-mail: george@civilogic.net

Phone (870) 932-7880

Fax (870) 972-9662

November 30, 2017

Mr. Michael Morris, PE
City of Jonesboro Engineering Department
PO Box 1845
Jonesboro, AR 72401

RE: 2324 Red Wolf Boulevard
Requested Street Right-of-Way and Easement Abandonment
Our File Number: 115149

Dear Mr. Morris:

Enclosed are two drawings. Sheet 1 of 2 indicates the easements that are being requested to be abandoned. Sheet 2 of 2 indicates the easements that are being requested to be retained. This site was originally residential, but was rezoned and redeveloped in 2015. The redevelopment included the removal of the old utilities, and the placement of the new utilities.

We are writing today to request written concurrence from your agency. Said concurrence is an essential part of the information required by the City Council of Jonesboro for formal consideration of the proposed abandonment.

Thank you for your time and attention. If we may be of further service, please do not hesitate to contact us at your convenience at the contacts shown above.

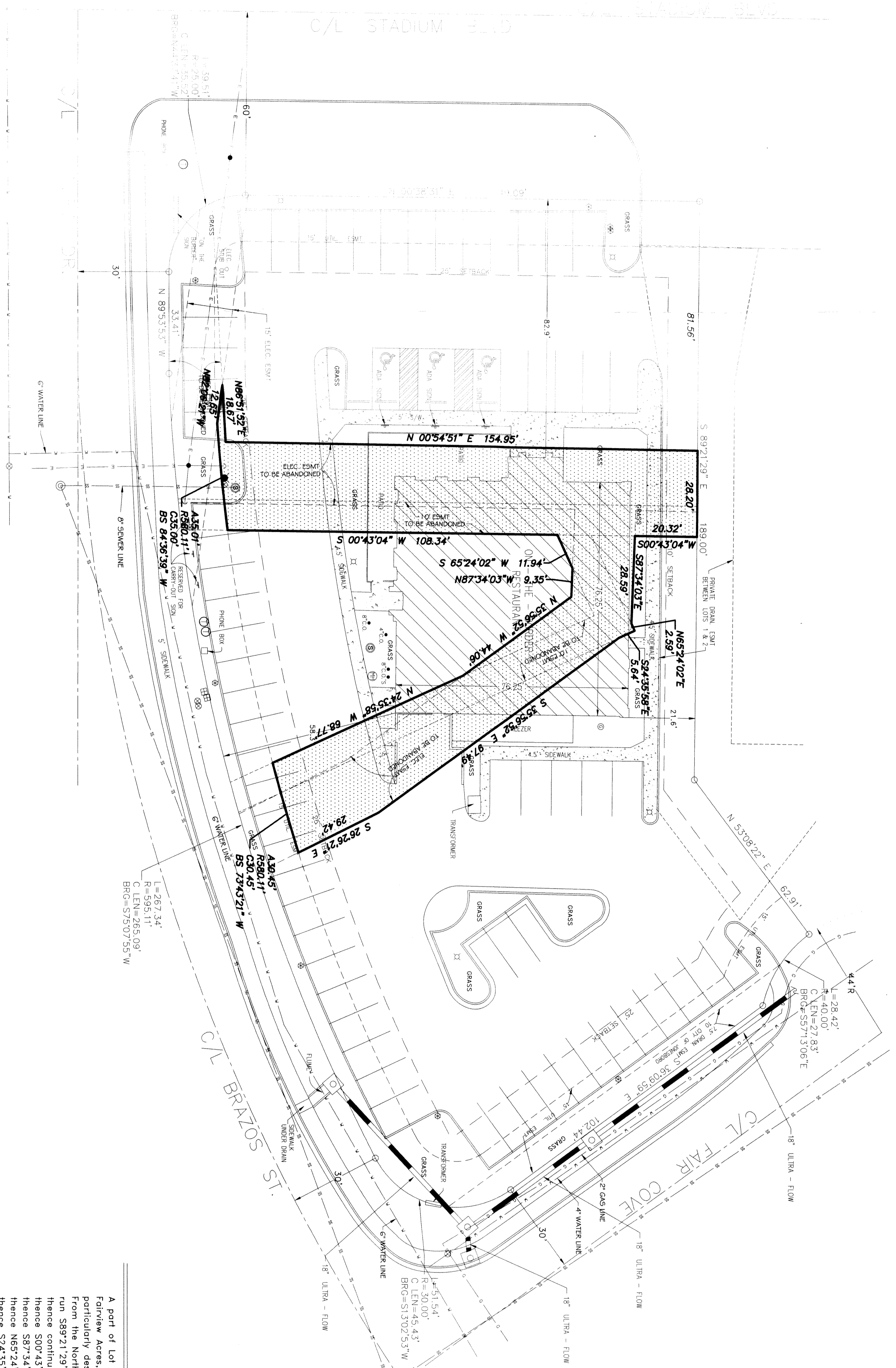
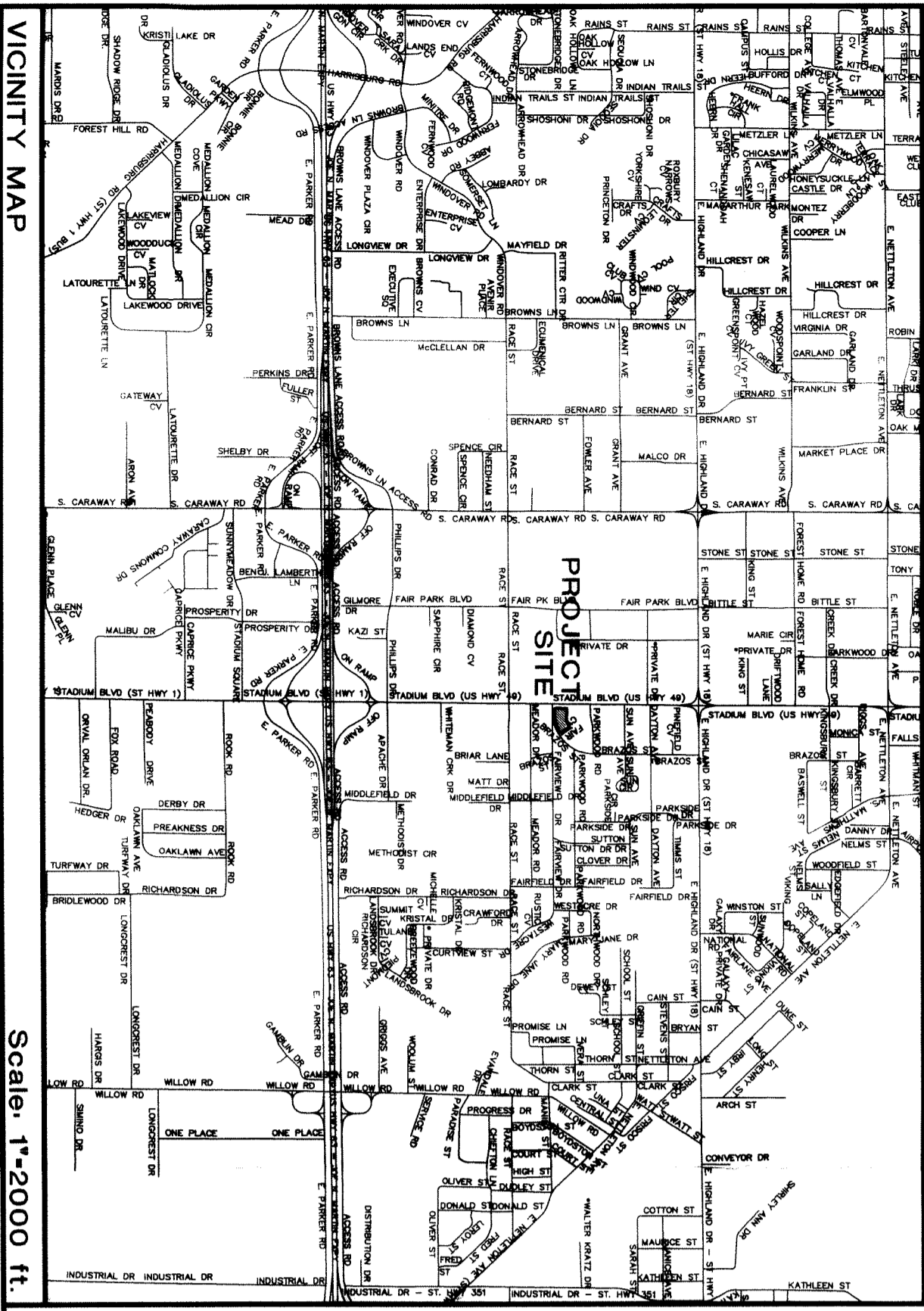
Respectfully,

Civilogic



George Hamman, PE, PS, President

Enclosure: Easements to be Abandoned (Sheet 1 of 2)
Easements to be Retained (Sheet 2 of 2)



- NOTES**
- 1) ALL BEARINGS ARE BASED ON ARKANSAS NORTH STATE PLANE COORDINATE SYSTEM.
 - 2) THE CLOSURE PRECISION OF THE PLAT IS IN EXCESS OF 1" IN 77,000'.
 - 3) THE RESEARCH COMPLETED FOR THIS SURVEY INCLUDES LEGAL DESCRIPTION PROVIDED AND OUR OWN RESEARCH AT THE COURTHOUSE.
 - 4) FLOOD PLAIN: THIS TRACT DOES NOT LIE WITHIN THE 100-YR FLOOD PLAIN PER FLOOD INSURANCE RATE MAP OF CRAIGHEAD CO., AR, AND INCORPORATED AREAS, COMMUNITY PLAN NO. 05031C0132 C, DATED 09/27/91. THIS TRACT DOES LIE WITHIN A ZONE "X" FLOOD PLAIN, PER THE MAP REFERENCED ABOVE.

LEGAL DESCRIPTION

A part of Lot 2, Red Wolf corner Replat of Lots 1 - 10, Block 'B' of Fairlaw Acres, Jonesboro, Craighead County, Arkansas, being more particularly described as follows:

From the Northwest corner of said Lot 2,

run S89°21'29"E a distance of 81.56 ft. to the POINT OF BEGINNING;

thence continue S89°21'29"E a distance of 28.20 ft. to a point;

thence S00°43'04"W a distance of 20.32 ft. to a point;

thence S87°34'03"E a distance of 28.59 ft. to a point;

thence N65°24'02"E a distance of 2.59 ft. to a point;

thence S24°35'58"E a distance of 97.49 ft. to a point;

thence S35°56'52"E a distance of 29.42 ft. to a point;

thence S28°26'21"E a distance of 30.45 ft. to a point;

thence along a curve to the right, said curve having a radius of 580.11 ft., an arc of 30.45 ft., a chord length of 30.45 ft. and a chord bearing of S73°43'21"W to a point;

thence N24°35'58"W a distance of 68.77 ft. to a point;

thence N35°56'52"W a distance of 44.06 ft. to a point;

thence N87°34'03"W a distance of 9.35 ft. to a point;

thence S65°24'02"W a distance of 11.94 ft. to a point;

thence S00°43'04"W a distance of 108.34 ft. to a point;

thence along a curve, said curve having a radius of 580.11 ft., an arc of 35.01 ft., a chord length of 35.00 ft. and a chord bearing of S84°36'39"W to a point;

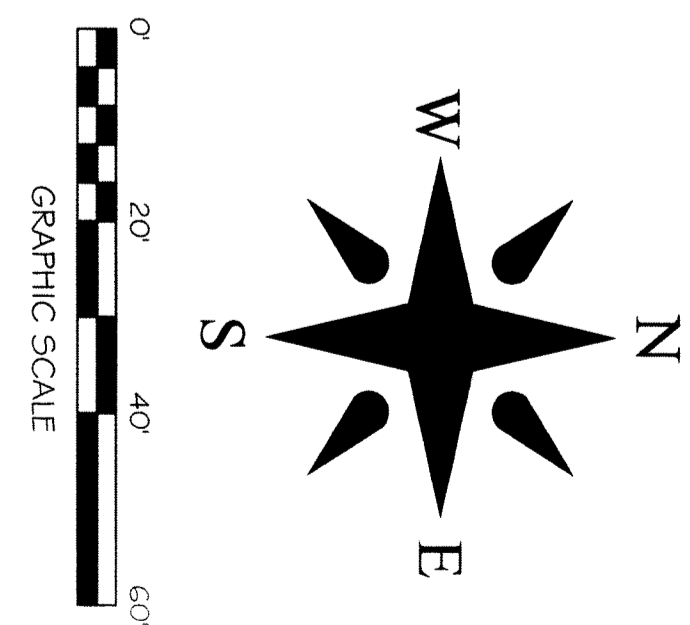
thence N82°06'21"W a distance of 12.65 ft. to a point;

thence N85°51'52"E a distance of 18.67 ft. to a point;

thence N00°54'51"E a distance of 154.95 ft. to a point, said point being the POINT OF BEGINNING.

LEGEND

- These standard symbols will be found in the drawing.
- ⊗ WATER METER
 - ⊕ GUY WIRE
 - ⊖ WATER VALVE
 - ⊙ FIRE HYDRANT
 - ⊚ SIGN
 - ⊛ TELEPHONE PEDestal
 - ⊜ POWER POLE
 - ⊝ IRRIGATION VALVE
 - ⊞ GAS REGULATOR
 - ⊟ LIGHT POLE
 - ⊠ SEWER MANHOLE
 - ⊡ GREASE TRAP
 - ⊢ CLEAN OUT
 - ⊣ OVERHEAD ELECTRIC LINE
 - ⊤ STORM DRAIN
 - ⊥ WATER LINE
 - ⊦ SANITARY SEWER LINE
 - ⊧ GAS LINE



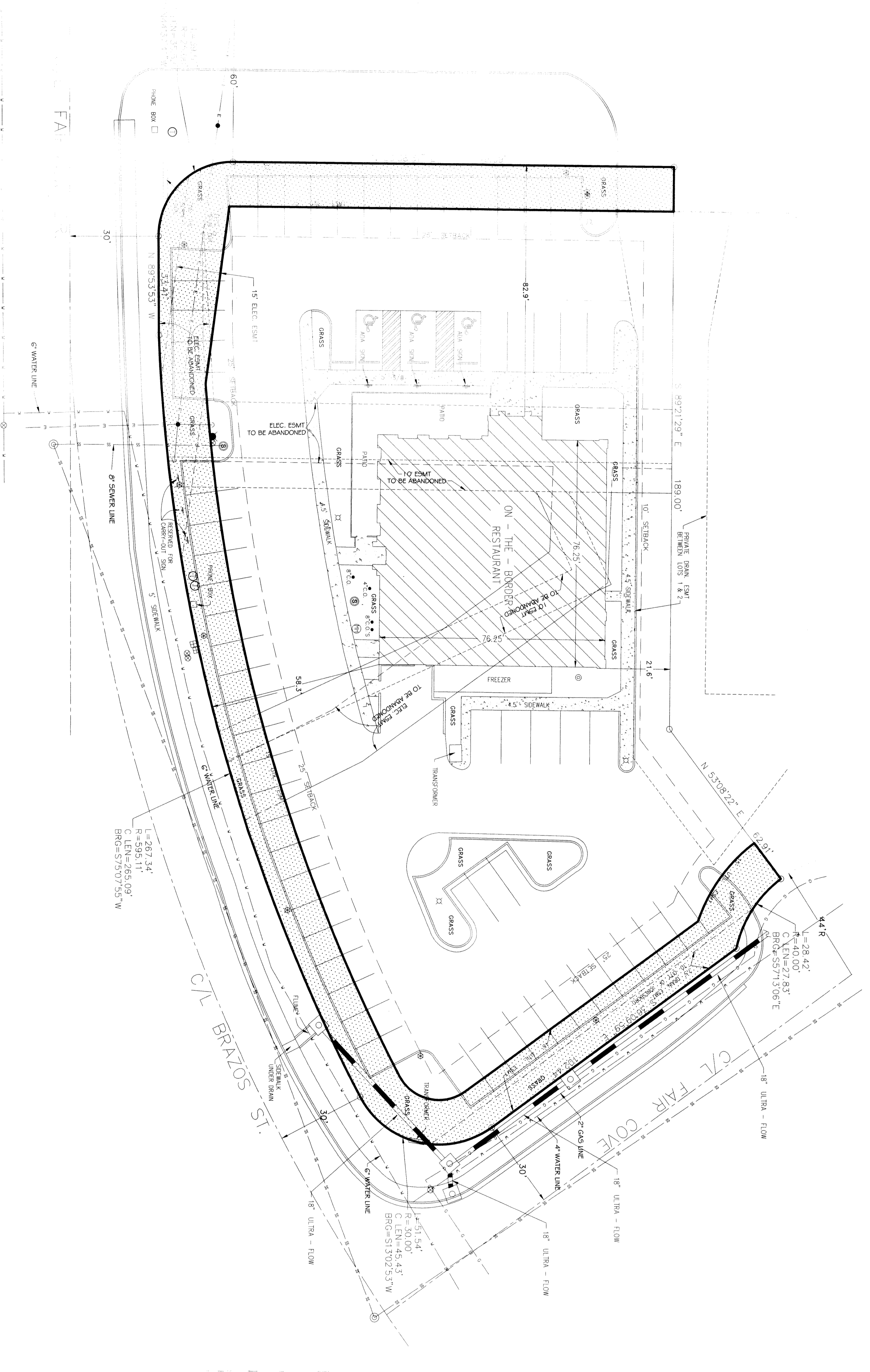
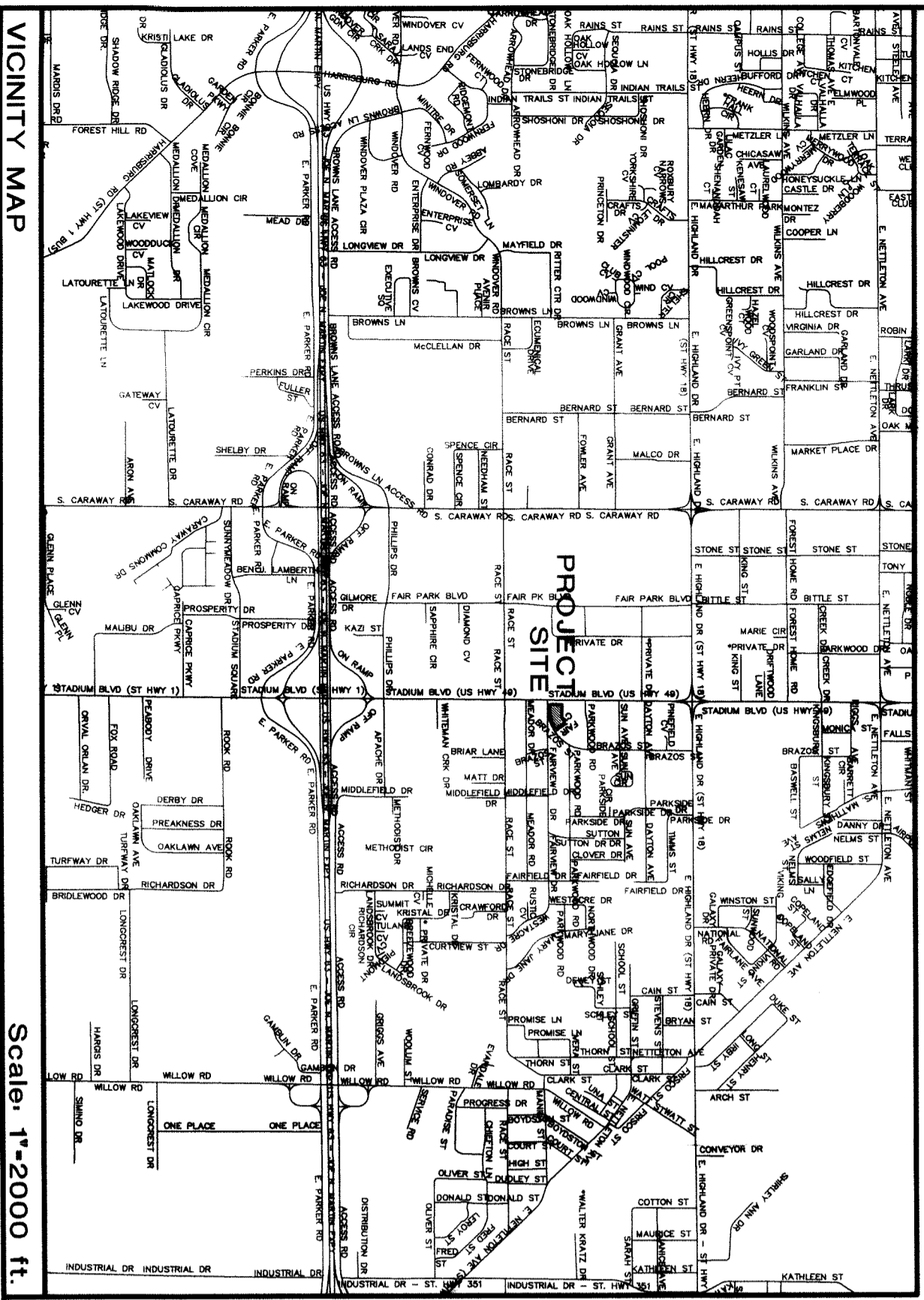
CERTIFICATE OF SURVEY

To all parties interested in Title to these premises: I hereby certify that I have prior to this day made a survey of the above described property as shown on the Plat of Survey hereon, and the property lines are correctly established; the improvements are as shown on the Plat of Survey; Encroachments, if any, as disclosed by Survey, are shown hereon.

EASEMENTS TO BE ABANDONED
2324 RED WOLF BLVD.
JONESBORO, ARKANSAS
FOR
CONWAY INN CORPORATION

ENGINEERS	PLANNERS	SURVEYORS	Date 11-27-17	Scale 1"=20'	Job No. 115149	Sheet No. 1 of 2
			Section 28	Township 14N	Range 04E	County CRAIGHEAD
			Drawn By: RE	Checked by: GH		
203 Southwest Dr. - Jonesboro, AR - (870)932-7880 - www.civilogic.net						
© 2017, Civilogic						

			JOB NO.: 115149
			SHEET NUMBER 1 of 2



- NOTES:
- 1) ALL BEARINGS ARE BASED ON ARKANSAS NORTH STATE PLANE COORDINATE SYSTEM.
 - 2) THE CLOSURE PRECISION OF THE PLAN IS IN EXCESS OF 1" IN 77,000."
 - 3) THE RESEARCH COMPLETED FOR THIS SURVEY INCLUDES LEGAL DESCRIPTION PROVIDED AND OUR OWN RESEARCH AT THE COURTHOUSE.
 - 4) FLOOD PLAIN: THIS TRACT DOES NOT LIE WITHIN THE 100-YR FLOOD PLAIN PER FLOOD INSURANCE RATE MAPS (FIRM) 15010A0152-C, DATED 07/27/09. THIS TRACT DOES LIE WITHIN A ZONE "X" FLOOD PLAIN, PER THE MAP REFERENCED ABOVE.

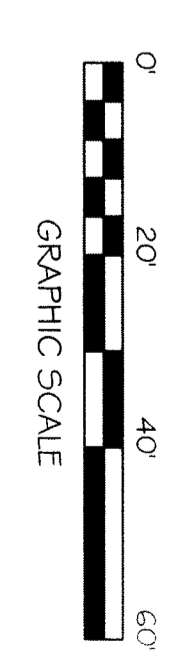
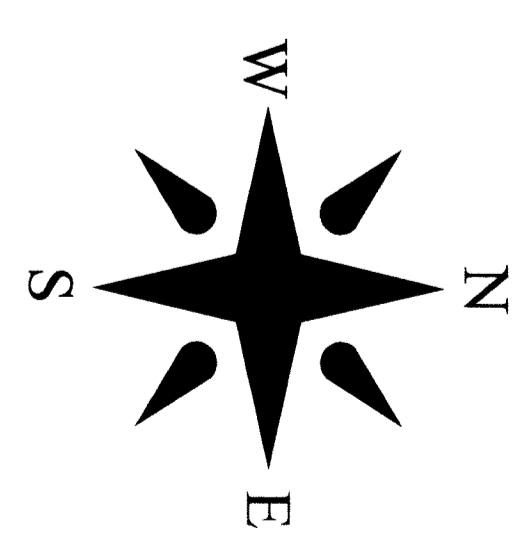
CERTIFICATE OF SURVEY:

To all parties interested in title to these premises: I hereby certify, that I am a duly Licensed Professional Surveyor of the State of Arkansas, and the above described property as shown on the Plat of Survey hereon. The property lines and corner monuments, to the best of my knowledge and ability, are correctly established; the improvements are as shown on the Plat of Survey. Encroachments, if any, as disclosed by Survey, are shown hereon.

LEGAL DESCRIPTION:

LOT 2, RED WOLF CORNER REPLAT OF LOTS 1 - 10, BLOCK 'B' OF FAIRVIEW ACRES, JONESBORO, CRAIGHEAD COUNTY, ARKANSAS.

- LEGEND
- These standard symbols will be found in the drawing.
- ⊗ WATER METER
 - ⊙ GUT WIRE
 - ⊕ WATER VALVE
 - ⊖ FIRE HYDRANT
 - ⊙ SIGN
 - ⊙ TELEPHONE PEDESTAL
 - ⊙ POWER POLE
 - ⊙ IRRIGATION VALVE
 - ⊙ GAS REGULATOR
 - ⊙ LIGHT POLE
 - ⊙ SEWER MANHOLE
 - ⊙ GREASE TRAP
 - ⊙ CLEAN OUT
 - OVERHEAD ELECTRIC LINE
 - STORM DRAIN
 - WATER LINE
 - SANITARY SEWER LINE
 - GAS LINE



	<p>EASEMENTS TO REMAIN IN PLACE 2324 RED WOLF BLVD. JONESBORO, ARKANSAS FOR CONWAY INN CORPORATION</p>	ENGINEERS PLANNERS SURVEYORS	Date: 11-27-17 Section: 28 Drawn By: RE	Scale: 1"=20' Township: 14N Range: 04E Checked by: GH	Job No.: 115149 County: CRAIGHEAD Checked by: GH	Sheet No.: 2 of 2	
					ONLY COPIES WITH VIOLET COLORED SIGNATURE ARE ORIGINAL CIVILOGIC COPIES		
		203 Southwest Dr. - Jonesboro, AR - (870)932-7880 - www.civilogic.net			© 2017, Civilogic		