

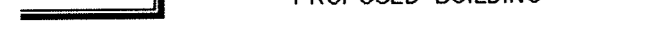




LEGEND FOR PROPOSED IMPROVEMENTS

-  PROPERTY LINE / R.O.W.
-  PROPOSED BUILDING
-  PROPOSED CURB AND GUTTER
-  PROPOSED PARKING SPACES
-  PROPOSED FENCING

- SYSL/4" - SINGLE YELLOW SOLID LINE / 4 INCH THICK
- DYSL/5" - DOUBLE YELLOW SOLID LINE / 5 INCH THICK EACH
- SWSL/24" - SINGLE WHITE SOLID LINE / 24 INCH THICK
- SWSL/8" - SINGLE WHITE SOLID LINE / 8 INCH THICK
- SWSL/4" - SINGLE WHITE SOLID LINE / 4 INCH THICK
- SWDL/4" - SINGLE WHITE DASHED LINE / 4 INCH THICK

EXISTING LEGEND

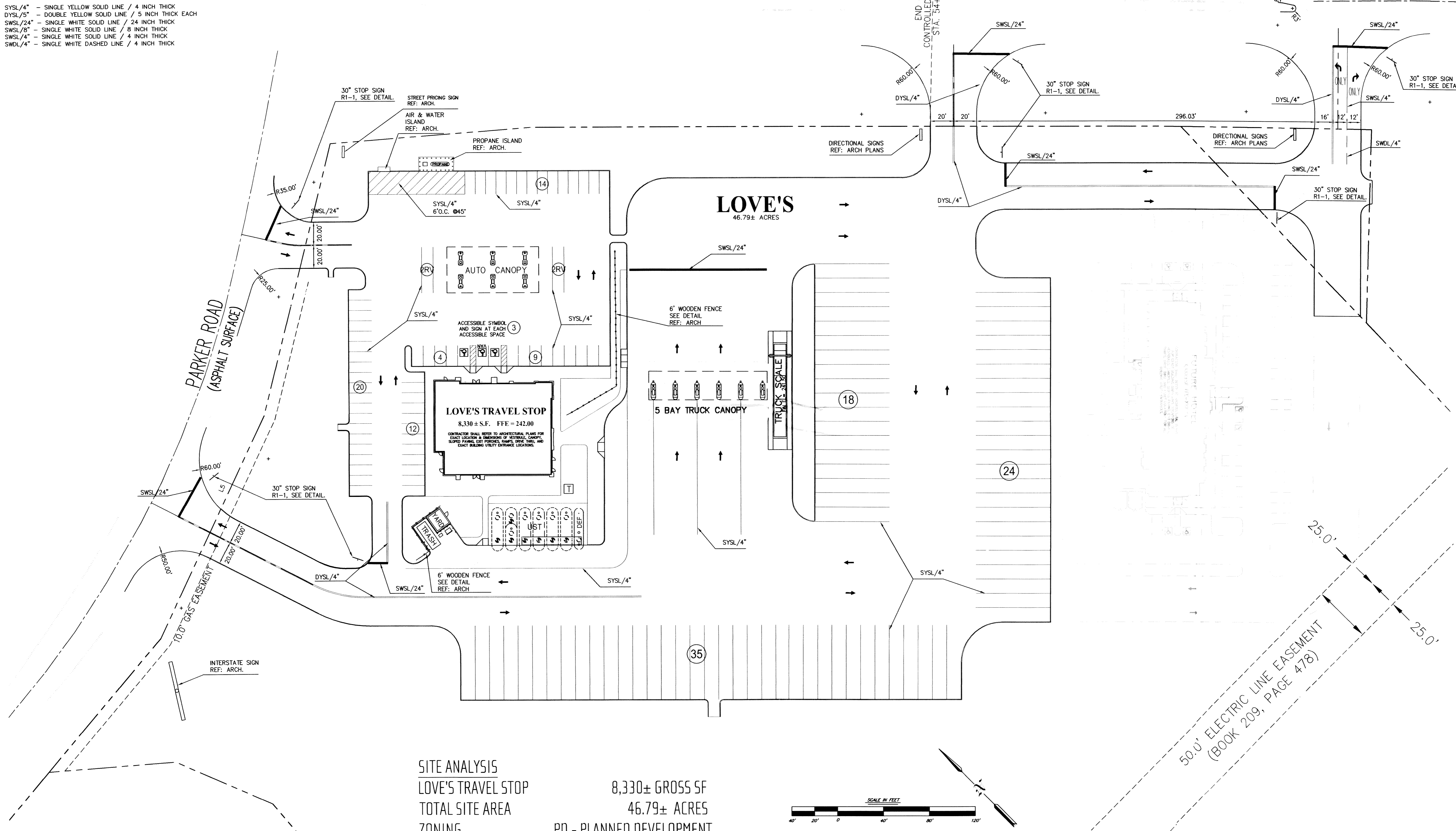
AR HWY NO. 463
NETTLETON AVENUE
(ASPH. W/ CONC MEDIAN)

RC 130111
file: 130111p10
drawn: jcs
date: 05-29-2013

RESOURCECONSULTING
CIVIL ENGINEERING
2223 Quail Run Drive - Resource Suite 02
Baton Rouge, Louisiana 70808
Resourceconsulting@hotmail.com
Tel.: (225) 761-9909; Fax (225) 766-6672

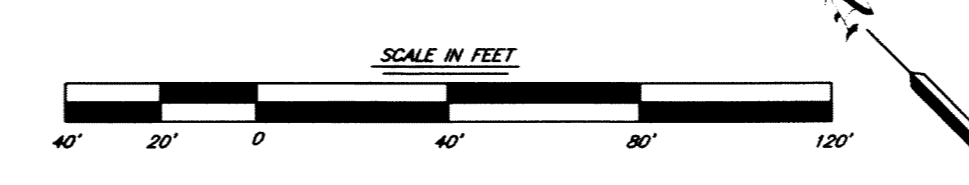


LOVE'S TRAVEL STOP
US HIGHWAY 63 EXIT 40 @ E NETTLETON AVE
JONESBORO, ARKANSAS



SITE ANALYSIS

LOVE'S TRAVEL STOP	8,330± GROSS SF
TOTAL SITE AREA	46.79± ACRES
ZONING	PD - PLANNED DEVELOPMENT
PARKING SUMMARY	AUTO ACC RV TRUCK TOTAL
SPACES PROVIDED	59 3 4 77 143



ISSUED FOR APPROVAL - NOT FOR CONSTRUCTION
THIS DRAWING IS NOT VALID WITHOUT AN ORIGINAL BLUE INK SIGNATURE AND ORIGINAL HANDWRITTEN DATE OF A LICENSED PROFESSIONAL ENGINEER.

PRELIMINARY SITE PLAN **P-10**