



Vector Disease Control, Inc.

Mosquito Surveillance and Control Report

for the

City of Jonesboro

September/October 2016

Year End 2016

2221 N. Church St. Jonesboro, AR 72401

T-870.933.6939 F- 870.933.0122

www.vdci.net





City of Jonesboro Activity Report

September/October 2016

Vector Disease Control, Inc. (VDCI) provides a proven, scientific approach to mosquito control for the city of Jonesboro. VDCI's operations include larval and adult mosquito surveillance followed by the application of larvicides and adulticides. In addition, our office responds to service requests from the public.

Mosquito Surveillance

VDCI has utilized a total of (13) New Jersey light traps placed in residential and recreational areas throughout Jonesboro during this reporting period. These traps collected an average of 14.0 mosquitoes per trap night (1,091 total mosquitoes) during this time. There have been a total of 3 mosquito species collected, with *Anopheles quadrimaculatus* being the most predominant species.

Larval Control Activity

Permanent water, flood water, artificial containers, and drainage system sites are inspected for larval mosquito breeding on a regular basis. In total, no active sites were located. As a result of these inspections, no chemical was applied to these mosquito breeding sites. Additionally, VDCI is continuing to eliminate breeding habitats for artificial container mosquitoes by targeting bird baths, buckets, tires, etc.



Adult Mosquito Control Activity

In response to community events and mosquito surveillance data, VDCI applied the adulticide Kontrol 30-30 on 25 truck nights for this reporting period. All adulticide ULV applications were made with truck-mounted ULV units equipped with GPS-enabled monitors. During this report period, a total of 1,1085.0 spray miles (39,453.6 acres) were treated with a total of 154.5 gallons of adulticide in residential and recreational areas. In addition to routine truck spraying, VDCI has responded to 15 service requests and adulticided for all parks and any special events, including softball and soccer tournaments, throughout the month.

Summary

During this reporting period, VDCI has continued to provide exceptional control of larval and adult mosquito populations. VDCI will remain diligent in our surveillance and control activities to prevent a significant increase in the mosquito population. Based on recent weather conditions VDCI expects the trend of routine adulticiding and larviciding to continue. However, if VDCI detects a significant rise in the mosquito population we will increase larval and adult control. As always, VDCI welcomes residents with any mosquito-related questions or concerns to contact VDCI's Jonesboro office directly at 870.933.6939.

We appreciate the opportunity to provide the abatement program for the city of Jonesboro and look forward to serving the city in the future.



Year-end Totals: 2016

Adulticiding-

Total chemical sprayed: 1,529.7 gallons

Total nights sprayed: 134

Total miles treated: 6,391.9(actual miles)

Total acres treated: 233,880.3

Service Request Total: 253

Larviciding-

Total larvicide used: 351.0 ounces

Total inspection sites treated: 349

Light Trap Surveillance-

Total mosquitoes collected: 11,701

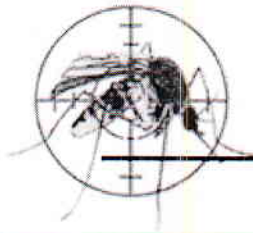
Total nightly average: 43.2

Total species collected: 3

Aerial

Total Gallons: 352.6

Total Acres: 63,457



Adult Mosquito Surveillance Report

Start Date: 9/1/2016

End Date: 10/6/2016

Jonesboro

Trap Location	Date Trap Set	Trap Type	Mosquito Species	No. Collected
Treatment Area 1 Collections				
Arrowhead Rd.	9/1/2016	NJ Light Trap	<i>Anopheles quadrimaculatus</i>	7
			<i>Psorophora columbiae</i>	6
Arrowhead Rd.	9/8/2016	NJ Light Trap	<i>Aedes vexans</i>	2
			<i>Anopheles quadrimaculatus</i>	8
Arrowhead Rd.	9/15/2016	NJ Light Trap	No Mosquitoes	0
Arrowhead Rd.	9/20/2016	NJ Light Trap	<i>Aedes vexans</i>	3
			<i>Anopheles quadrimaculatus</i>	2
Arrowhead Rd.	9/27/2016	NJ Light Trap	No Mosquitoes	0
Arrowhead Rd.	10/5/2016	NJ Light Trap	<i>Aedes vexans</i>	1
Trap Total				29 (Avg. 4.8)
Shady Lane	9/1/2016	NJ Light Trap	<i>Anopheles quadrimaculatus</i>	38
			<i>Psorophora columbiae</i>	16
Shady Lane	9/8/2016	NJ Light Trap	<i>Aedes vexans</i>	8
			<i>Anopheles quadrimaculatus</i>	37
Shady Lane	9/15/2016	NJ Light Trap	<i>Anopheles quadrimaculatus</i>	9
Shady Lane	9/20/2016	NJ Light Trap	<i>Aedes vexans</i>	1
			<i>Anopheles quadrimaculatus</i>	5
Shady Lane	9/27/2016	NJ Light Trap	No Mosquitoes	0
Shady Lane	10/5/2016	NJ Light Trap	No Mosquitoes	0
Trap Total				114 (Avg. 19)
Strawfloor	9/27/2016	NJ Light Trap	<i>Anopheles quadrimaculatus</i>	1
Trap Total				1 (Avg. 1)
Treatment Area 2 Collections				
Strawfloor	9/1/2016	NJ Light Trap	<i>Anopheles quadrimaculatus</i>	17
Strawfloor	9/8/2016	NJ Light Trap	<i>Anopheles quadrimaculatus</i>	24
Strawfloor	9/15/2016	NJ Light Trap	<i>Anopheles quadrimaculatus</i>	5
Strawfloor	9/20/2016	NJ Light Trap	<i>Anopheles quadrimaculatus</i>	7
Strawfloor	10/5/2016	NJ Light Trap	<i>Aedes vexans</i>	3

Vector Disease Control International
 2221 N. Church Street
 Jonesboro, AR 72402
 800-413-4445

Trap Location	Date Trap Set	Trap Type	Mosquito Species	No. Collected
				Trap Total 56 (Avg. 11.2)
Treatment Area 3 Collections				
Ridge Pointe	9/1/2016	NJ Light Trap	<i>Anopheles quadrimaculatus</i>	41
			<i>Psorophora columbiae</i>	6
Ridge Pointe	9/8/2016	NJ Light Trap	<i>Aedes vexans</i>	4
			<i>Anopheles quadrimaculatus</i>	42
Ridge Pointe	9/15/2016	NJ Light Trap	<i>Aedes vexans</i>	3
			<i>Anopheles quadrimaculatus</i>	14
Ridge Pointe	9/20/2016	NJ Light Trap	<i>Anopheles quadrimaculatus</i>	6
Ridge Pointe	9/27/2016	NJ Light Trap	<i>Aedes vexans</i>	1
Ridge Pointe	10/5/2016	NJ Light Trap	<i>Anopheles quadrimaculatus</i>	4
				Trap Total 121 (Avg. 20.2)
Treatment Area 4 Collections				
Part Ridge	9/1/2016	NJ Light Trap	<i>Anopheles quadrimaculatus</i>	50
			<i>Psorophora columbiae</i>	7
Part Ridge	9/8/2016	NJ Light Trap	<i>Aedes vexans</i>	2
			<i>Anopheles quadrimaculatus</i>	24
			<i>Psorophora columbiae</i>	4
Part Ridge	9/15/2016	NJ Light Trap	<i>Aedes vexans</i>	1
			<i>Anopheles quadrimaculatus</i>	4
Part Ridge	9/27/2016	NJ Light Trap	<i>Anopheles quadrimaculatus</i>	4
				Trap Total 96 (Avg. 24)
Partridge	9/20/2016	NJ Light Trap	<i>Aedes vexans</i>	3
			<i>Anopheles quadrimaculatus</i>	8
Partridge	10/5/2016	NJ Light Trap	<i>Anopheles quadrimaculatus</i>	7
				Trap Total 18 (Avg. 9)
Treatment Area 5 Collections				
Derby Dr.	9/1/2016	NJ Light Trap	<i>Aedes vexans</i>	6
			<i>Anopheles quadrimaculatus</i>	5
Derby Dr.	9/8/2016	NJ Light Trap	<i>Anopheles quadrimaculatus</i>	5
Derby Dr.	9/15/2016	NJ Light Trap	<i>Aedes vexans</i>	3
			<i>Anopheles quadrimaculatus</i>	4
Derby Dr.	9/20/2016	NJ Light Trap	<i>Aedes vexans</i>	5

Trap Location	Date Trap Set	Trap Type	Mosquito Species	No. Collected
Derby Dr.	9/20/2016	NJ Light Trap	<i>Anopheles quadrimaculatus</i>	2
Derby Dr.	9/27/2016	NJ Light Trap	No Mosquitoes	0
Derby Dr.	10/5/2016	NJ Light Trap	<i>Aedes vexans</i>	1
			<i>Anopheles quadrimaculatus</i>	2
Trap Total				33 (Avg. 5.5)
Frog Pond	9/1/2016	NJ Light Trap	<i>Anopheles quadrimaculatus</i>	14
Frog Pond	9/8/2016	NJ Light Trap	<i>Aedes vexans</i>	1
			<i>Anopheles quadrimaculatus</i>	8
			<i>Psorophora columbiae</i>	4
Frog Pond	9/15/2016	NJ Light Trap	<i>Aedes vexans</i>	2
			<i>Anopheles quadrimaculatus</i>	6
Frog Pond	9/20/2016	NJ Light Trap	No Mosquitoes	0
Frog Pond	9/27/2016	NJ Light Trap	<i>Anopheles quadrimaculatus</i>	3
Frog Pond	10/5/2016	NJ Light Trap	<i>Aedes vexans</i>	1
			<i>Anopheles quadrimaculatus</i>	4
Trap Total				43 (Avg. 7.2)

Treatment Area 6 Collections

Oakhill	9/1/2016	NJ Light Trap	<i>Anopheles quadrimaculatus</i>	45
Oakhill	9/8/2016	NJ Light Trap	<i>Aedes vexans</i>	3
			<i>Anopheles quadrimaculatus</i>	11
Oakhill	9/15/2016	NJ Light Trap	<i>Aedes vexans</i>	2
			<i>Anopheles quadrimaculatus</i>	4
Oakhill	9/20/2016	NJ Light Trap	<i>Anopheles quadrimaculatus</i>	4
Oakhill	9/27/2016	NJ Light Trap	<i>Anopheles quadrimaculatus</i>	2
Oakhill	10/5/2016	NJ Light Trap	<i>Aedes vexans</i>	3
Trap Total				74 (Avg. 12.3)
Pleasant View	9/1/2016	NJ Light Trap	<i>Aedes vexans</i>	2
			<i>Anopheles quadrimaculatus</i>	13
Pleasant View	9/8/2016	NJ Light Trap	<i>Aedes vexans</i>	2
			<i>Anopheles quadrimaculatus</i>	6
Pleasant View	9/15/2016	NJ Light Trap	<i>Anopheles quadrimaculatus</i>	3
Pleasant View	9/20/2016	NJ Light Trap	<i>Anopheles quadrimaculatus</i>	6
Pleasant View	9/27/2016	NJ Light Trap	<i>Anopheles quadrimaculatus</i>	3
Pleasant View	10/5/2016	NJ Light Trap	<i>Aedes vexans</i>	6

Trap Location	Date Trap Set	Trap Type	Mosquito Species	No. Collected
<i>Trap Total</i>				41 (Avg. 6.8)

Treatment Area 8 Collections

Briarcrest	9/1/2016	NJ Light Trap	<i>Anopheles quadrimaculatus</i>	17
Briarcrest	9/8/2016	NJ Light Trap	<i>Anopheles quadrimaculatus</i>	6
Briarcrest	9/15/2016	NJ Light Trap	<i>Anopheles quadrimaculatus</i>	5
Briarcrest	9/20/2016	NJ Light Trap	<i>Anopheles quadrimaculatus</i>	2
Briarcrest	9/27/2016	NJ Light Trap	<i>Anopheles quadrimaculatus</i>	2
Briarcrest	10/5/2016	NJ Light Trap	<i>Anopheles quadrimaculatus</i>	1
<i>Trap Total</i>				34 (Avg. 5.7)

Matthew	9/1/2016	NJ Light Trap	<i>Aedes vexans</i>	6
			<i>Anopheles quadrimaculatus</i>	42
Matthew	9/8/2016	NJ Light Trap	No Mosquitoes	0
Matthew	9/15/2016	NJ Light Trap	<i>Aedes vexans</i>	6
			<i>Anopheles quadrimaculatus</i>	37
Matthew	9/20/2016	NJ Light Trap	<i>Anopheles quadrimaculatus</i>	9
Matthew	9/27/2016	NJ Light Trap	<i>Anopheles quadrimaculatus</i>	12
<i>Trap Total</i>				112 (Avg. 22.4)

Matthews	10/5/2016	NJ Light Trap	<i>Aedes vexans</i>	4
<i>Trap Total</i>				4 (Avg. 4)

Treatment Area 9 Collections

Cottage Home Rd.	9/1/2016	NJ Light Trap	<i>Anopheles quadrimaculatus</i>	6
Cottage Home Rd.	9/8/2016	NJ Light Trap	<i>Anopheles quadrimaculatus</i>	4
Cottage Home Rd.	9/15/2016	NJ Light Trap	<i>Anopheles quadrimaculatus</i>	3
Cottage Home Rd.	9/20/2016	NJ Light Trap	<i>Anopheles quadrimaculatus</i>	1
Cottage Home Rd.	9/27/2016	NJ Light Trap	<i>Anopheles quadrimaculatus</i>	4
Cottage Home Rd.	10/5/2016	NJ Light Trap	<i>Anopheles quadrimaculatus</i>	3
<i>Trap Total</i>				21 (Avg. 3.5)

Treatment Area 10 Collections

Ashwood	9/1/2016	NJ Light Trap	<i>Aedes vexans</i>	6
			<i>Anopheles quadrimaculatus</i>	39
Ashwood	9/8/2016	NJ Light Trap	<i>Aedes vexans</i>	16

Trap Location	Date Trap Set	Trap Type	Mosquito Species	No. Collected
Ashwood	9/8/2016	NJ Light Trap	<i>Anopheles quadrimaculatus</i>	200
Ashwood	9/15/2016	NJ Light Trap	<i>Anopheles quadrimaculatus</i>	5
Ashwood	9/20/2016	NJ Light Trap	<i>Anopheles quadrimaculatus</i>	9
Ashwood	9/27/2016	NJ Light Trap	<i>Anopheles quadrimaculatus</i>	7
Ashwood	10/5/2016	NJ Light Trap	<i>Anopheles quadrimaculatus</i>	12
Trap Total				294 (Avg. 49)

Overall Trap Total 1,091
Overall Trap Average 14.0



Service Request Larvicide Applications

Start Date: 9/1/2016

End Date: 10/6/2016

Jonesboro

Date	Location	Habitat	Larvicide	Amount Applied (ounces)	Area Treated (sq ft)
Treatment Area 0 Applications					
9/12/2016	3014 Pine Field Cove			0.00	0.0
9/8/2016	3205 Strawfloor Dr.			0.00	0.0
9/9/2016	Southwest Dr.			0.00	0.0
9/22/2016				0.00	0.0
9/21/2016	1108 Dove Rd.			0.00	0.0
				Total Applied:	0.00 0.0 acres
				Total Larvicide Applied in Zone 0:	0.00 0.0 acres
Treatment Area 2 Applications					
9/2/2016	2113 West Washington			0.00	0.0
9/12/2016	1816 Craighead Rd.			0.00	0.0
				Total Applied:	0.00 0.0 acres
				Total Larvicide Applied in Zone 2:	0.00 0.0 acres
Treatment Area 5 Applications					
9/16/2016	1805 Pine Valley			0.00	0.0
				Total Applied:	0.00 0.0 acres
				Total Larvicide Applied in Zone 5:	0.00 0.0 acres
Treatment Area 6 Applications					
9/16/2016	2605 A. St.			0.00	0.0
10/3/2016	205 University Dr.			0.00	0.0

Vector Disease Control International
2221 N. Church Street
Jonesboro, AR 72402
800-413-4445

Date	Location	Habitat	Larvicide	Amount Applied (ounces)	Area Treated (sq ft)
				<i>Total Applied:</i>	0.00 0.0 acres
				<i>Total Larvicide Applied in Zone 6:</i>	0.00 0.0 acres
Treatment Area 8 Applications					
9/2/2016	1201 Fleming			0.00	0.0
9/28/2016	1104 Marjorie Dr.			0.00	0.0
				<i>Total Applied:</i>	0.00 0.0 acres
				<i>Total Larvicide Applied in Zone 8:</i>	0.00 0.0 acres
Treatment Area 10 Applications					
9/1/2016	3626 Flemon			0.00	0.0
9/9/2016	710 S.W. Drive			0.00	0.0
	3626 Flemon Rd.			0.00	0.0
10/3/2016	3626 Flemon			0.00	0.0
				<i>Total Applied:</i>	0.00 0.0 acres
				<i>Total Larvicide Applied in Zone 10:</i>	0.00 0.0 acres
				<i>Overall Total Ounces Applied</i>	0.00 0.0 acres



Service Request Adulticide Applications

Start Date: 9/1/2016

End Date: 10/6/2016

Jonesboro

Date	Location	Chemical	Mix Ratio	Amount Applied	Area Treated
Treatment Area 0 Applications					
9/21/2016				0.0	0.00 acres
				<i>Total Applied:</i> 0.0 (0.0 gals)	0.00 acres
9/22/2016	1108 Dove Rd.	Kontrol 30-30 (73748-5)	1:5	12.0	0.50 acres
				<i>Total Kontrol 30-30 Applied:</i> 12.0 (0.1 gals)	0.50 acres
9/6/2016	3014 Pine Field Cove	Kontrol 31-67 (73748-6)	1:4	6.0	0.50 acres
9/8/2016	3205 Strawfloor Dr.	Kontrol 31-67 (73748-6)	1:4	24.0	2.00 acres
9/9/2016	Southwest Dr.	Kontrol 31-67 (73748-6)	1:4	60.0	10.00 acres
				<i>Total Kontrol 31-67 Applied:</i> 90.0 (0.7 gals)	12.50 acres
Treatment Area 2 Applications					
9/2/2016	2113 West Washington	Kontrol 31-67 (73748-6)	1:4	30.0	3.00 acres
9/12/2016	1816 Craighead Rd.	Kontrol 31-67 (73748-6)	1:4	12.0	2.00 acres
				<i>Total Kontrol 31-67 Applied:</i> 42.0 (0.3 gals)	5.00 acres
Treatment Area 5 Applications					
9/16/2016	1805 Pine Valley	Kontrol 31-67 (73748-6)	1:4	60.0	1.50 acres
				<i>Total Kontrol 31-67 Applied:</i> 60.0 (0.5 gals)	1.50 acres
Treatment Area 6 Applications					
9/16/2016	2605 A. St.	Kontrol 30-30 (73748-5)	1:4	30.0	2.00 acres
10/3/2016	205 University Dr.	Kontrol 30-30 (73748-5)	1:5	60.0	3.00 acres
				<i>Total Kontrol 30-30 Applied:</i> 90.0 (0.7 gals)	5.00 acres
Treatment Area 8 Applications					

Vector Disease Control International
 2221 N. Church Street
 Jonesboro, AR 72402
 800-413-4445

Date	Location	Chemical	Mix Ratio	Amount Applied	Area Treated
9/28/2016	1104 Marjorie Dr.	Kontrol 30-30 (73748-5)	1:5	60.0	2.00 acres
		Total Kontrol 30-30 Applied:		60.0 (0.5 gals)	2.00 acres
9/2/2016	1201 Fleming	Kontrol 31-67 (73748-6)	1:4	30.0	5.00 acres
		Total Kontrol 31-67 Applied:		30.0 (0.2 gals)	5.00 acres
Treatment Area 10 Applications					
10/3/2016	3626 Flemon	Kontrol 30-30 (73748-5)	1:5	60.0	4.00 acres
		Total Kontrol 30-30 Applied:		60.0 (0.5 gals)	4.00 acres
8/31/2016	3626 Flemon	Kontrol 31-67 (73748-6)	1:4	12.0	0.10 acres
9/9/2016	710 S.W. Drive	Kontrol 31-67 (73748-6)	1:4	24.0	2.00 acres
9/9/2016	3626 Flemon Rd.	Kontrol 31-67 (73748-6)	1:4	12.0	2.00 acres
		Total Kontrol 31-67 Applied:		48.0 (0.4 gals)	4.10 acres
		Grand Totals		492.0 (3.8 gals)	39.60 acres



Ground Adulticide Applications

Start Date: 9/1/2016 End Date: 10/6/2016

Jonesboro

Month	Date	Municipality	Chemical	Mix Ratio	Trip Miles	Spray Miles	Spray Acres	Gallons Sprayed
Treatment Area 1 Applications								
September 2016	9/29/2016		Kontrol 30-30 (73748-5)	1:5	25.0	6.0	217.0	1.2
	9/30/2016		Kontrol 30-30 (73748-5)	1:5	21.0	20.5	745.2	
					<i>Total Kontrol 30-30 Applied:</i>			<i>1.2</i>
October 2016	10/3/2016		Kontrol 30-30 (73748-5)	1:5	33.0	8.8	319.0	1.9
					<i>Total Kontrol 30-30 Applied:</i>			<i>1.9</i>
Treatment Area 1 Totals:								
					79.0	35.3	1,281.2	3.1
Treatment Area 2 Applications								
September 2016	9/27/2016			Neat	0.0	0.0	0.0	0.0
					<i>Total Applied:</i>			<i>0.0</i>
September 2016	9/1/2016		Kontrol 31-67 (73748-6)	1:4	0.0	103.0	3745.5	4.0
					<i>Total Kontrol 31-67 Applied:</i>			<i>4.0</i>
Treatment Area 2 Totals:								
					0.0	103.0	3,745.5	4.0

Vector Disease Control International
2221 N. Church Street
Jonesboro, AR 72402
800-413-4445

Month	Date	Municipality	Chemical	Mix Ratio	Trip Miles	Spray Miles	Spray Acres	Gallons Sprayed
September 2016	9/6/2016		Kontrol 31-67 (73748-6)	1:4	98.0	84.5	3073.1	9.3
<i>Total Kontrol 31-67 Applied: 9.3</i>								
Zone 2 Totals: 98.0 84.5 3,073.1 9.3								
Treatment Area 3 Applications								
September 2016	9/22/2016		Kontrol 30-30 (73748-5)	1:5	131.0	122.1	4440.0	4.0
September 2016	9/1/2016		Kontrol 31-67 (73748-6)	1:4	37.0	33.2	1208.1	6.2
<i>Total Kontrol 30-30 Applied: 4.0</i>								
<i>Total Kontrol 31-67 Applied: 6.2</i>								
Zone 3 Totals: 168.0 155.3 5,648.1 10.2								
Treatment Area 4 Applications								
September 2016	9/13/2016		Kontrol 30-30 (73748-5)	1:4	50.0	37.1	1346.0	7.0
9/23/2016	9/23/2016		Kontrol 30-30 (73748-5)	1:5	48.0	32.2	1168.0	8.7
9/23/2016	9/23/2016		Kontrol 30-30 (73748-5)	1:5	58.0	35.6	1292.0	6.5
<i>Total Kontrol 30-30 Applied: 22.2</i>								
September 2016	9/1/2016		Kontrol 31-67 (73748-6)	1:4	41.0	26.1	949.1	5.9
9/2/2016	9/2/2016		Kontrol 31-67 (73748-6)	1:3	35.0	27.1	985.3	5.1

Vector Disease Control International
 2221 N. Church Street
 Jonesboro, AR 72402
 800-413-4445

Month	Date	Municipality	Chemical	Mix Ratio	Trip Miles	Spray Miles	Spray Acres	Gallons Sprayed	
September 2016	9/12/2016		Kontrol 31-67 (73748-6)	1:4	46.0	40.8	1483.7	3.8	
<i>Total Kontrol 31-67 Applied: 14.8</i>									
Treatment Area 5 Applications									
						Zone 4 Totals:	278.0	198.9	7,224.1
September 2016	9/13/2016		Kontrol 30-30 (73748-5)	1:4	30.0	29.5	1074.7	5.5	
<i>Total Kontrol 30-30 Applied: 5.5</i>									
Zone 5 Totals:									
						30.0	29.5	1,074.7	5.5
Treatment Area 6 Applications									
September 2016	9/16/2016		Kontrol 30-30 (73748-5)	1:4	57.0	45.3	1647.4	8.5	
September 2016	9/19/2016		Kontrol 30-30 (73748-5)	1:5	41.0	39.5	1437.2	7.4	
<i>Total Kontrol 30-30 Applied: 15.8</i>									
September 2016	9/2/2016		Kontrol 31-67 (73748-6)	1:3	31.0	20.2	733.0	5.9	
<i>Total Kontrol 31-67 Applied: 5.9</i>									
Zone 6 Totals:									
						129.0	105.0	3,817.6	21.7
Treatment Area 8 Applications									
September 2016	9/15/2016		Kontrol 30-30 (73748-5)	1:4	13.0	11.3	412.8	2.1	
September 2016	9/22/2016		Kontrol 30-30 (73748-5)	1:5	32.0	32.1	1169.3	6.0	

Month	Date	Municipality	Chemical	Mix Ratio	Trip Miles	Spray Miles	Spray Acres	Gallons Sprayed
September 2016	9/26/2016		Kontrol 30-30 (73748-5)	1:5	37.0	31.7	1150.0	5.6
<i>Total Kontrol 30-30 Applied: 13.8</i>								
September 2016	9/8/2016		Kontrol 31-67 (73748-6)	1:4	28.0	26.2	956.1	4.9
<i>Total Kontrol 31-67 Applied: 4.9</i>								
Zone 8 Totals: 110.0 101.3 3,688.2 18.7								
Treatment Area 10 Applications								
September 2016	9/15/2016		Kontrol 30-30 (73748-5)	1:4	22.0	19.9	727.0	3.8
September 2016	9/16/2016		Kontrol 30-30 (73748-5)	1:4	32.0	31.2	1137.1	5.9
September 2016	9/26/2016		Kontrol 30-30 (73748-5)	1:5	118.0	92.9	3378.2	9.1
<i>Total Kontrol 30-30 Applied: 18.7</i>								
September 2016	9/6/2016		Kontrol 31-67 (73748-6)	1:4	30.0	29.0	1054.6	5.4
September 2016	9/9/2016		Kontrol 31-67 (73748-6)	1:4	36.0	31.0	1128.6	6.0
<i>Total Kontrol 31-67 Applied: 11.4</i>								
Zone 10 Totals: 238.0 204.0 7,425.5 30.1								
Treatment Area 11 Applications								
September 2016	9/22/2016		Kontrol 30-30 (73748-5)	1:5	45.0	32.7	1187.0	8.4

Vector Disease Control International
2221 N. Church Street
Jonesboro, AR 72402
800-413-4445

Month	Date	Municipality	Chemical	Mix Ratio	Trip Miles	Spray Miles	Spray Acres	Gallons Sprayed
September 2016	9/26/2016		Kontrol 30-30 (73748-5)	1:5	2.0	1.7	62.7	0.3
				<i>Total Kontrol 30-30 Applied:</i>				
September 2016	9/12/2016		Kontrol 31-67 (73748-6)	1:4	45.0	33.8	1226.0	6.2
				<i>Total Kontrol 31-67 Applied:</i>				
				Zone 11 Totals:	92.0	68.2	2,475.7	14.9
				Grand Totals:	1,222.0	1,085.0	39,453.6	154.5



Summary of Service Requests

Start Date: 9/1/2016 End Date: 10/6/2016

Jonesboro

Month	Municipality	Treatment Area	Total Calls	Total Inspected	Disposition Totals	Total Sites with Mosquitoes	Total Amount of Larvicide Applied	Total Amount of Adulticide Applied
September 2016		0	5	4	No Action Required: 0 Emptied Containers: 0 Biological Control: 0 Larvicided: 0 Adulticided: 4 Needed to Return: 0	Eggs: 0 Larvae: 0 Pupae: 0 Adults: 0	0.00 oz	102.0 oz
	September 2016	2	2	2	No Action Required: 0 Emptied Containers: 0 Biological Control: 0 Larvicided: 0 Adulticided: 2 Needed to Return: 0	Eggs: 0 Larvae: 0 Pupae: 0 Adults: 0	0.00 oz	42.0 oz
		5	1	1	No Action Required: 0 Emptied Containers: 0 Biological Control: 0 Larvicided: 0 Adulticided: 1 Needed to Return: 0	Eggs: 0 Larvae: 0 Pupae: 0 Adults: 0	0.00 oz	60.0 oz

Month	Municipality	Treatment Area	Total Calls	Total Inspected	Disposition Totals	Total Sites with Mosquitoes	Total Amount of Larvicide Applied	Total Amount of Adulticide Applied
September 2016		6	1	1	No Action Required:	0	0.00 oz	30.0 oz
					Emptied Containers:	0	0	
					Biological Control:	0	0	
					Larvicided:	0	0	
					Adulticided:	1		
					Needed to Return:	0		
September 2016		8	2	2	No Action Required:	0	0.00 oz	90.0 oz
					Emptied Containers:	0	0	
					Biological Control:	0	0	
					Larvicided:	0	0	
					Adulticided:	2		
					Needed to Return:	0		
September 2016		10	2	2	No Action Required:	0	0.00 oz	36.0 oz
					Emptied Containers:	0	0	
					Biological Control:	0	0	
					Larvicided:	0	0	
					Adulticided:	2		
					Needed to Return:	0		
October 2016		6	1	1	No Action Required:	0	0.00 oz	60.0 oz
					Emptied Containers:	0	0	
					Biological Control:	0	0	
					Larvicided:	0	0	
					Adulticided:	1		
					Needed to Return:	0		

Month	Municipality	Treatment Area	Total Calls	Total Inspected	Disposition Totals			Total Sites with Mosquitoes	Total Amount of	
					No Action Required:	Emptied Containers:	Biological Control:		Larvicide Applied	Adulticide Applied
October 2016		10	1	1	0	0	0	0	0.00 oz	60.0 oz
					Needed to Return:	0	Eggs:	0		
						0	Larvae:	0		
						0	Pupae:	0		
						1	Adults:	0		
						0	Adulticided:	1		

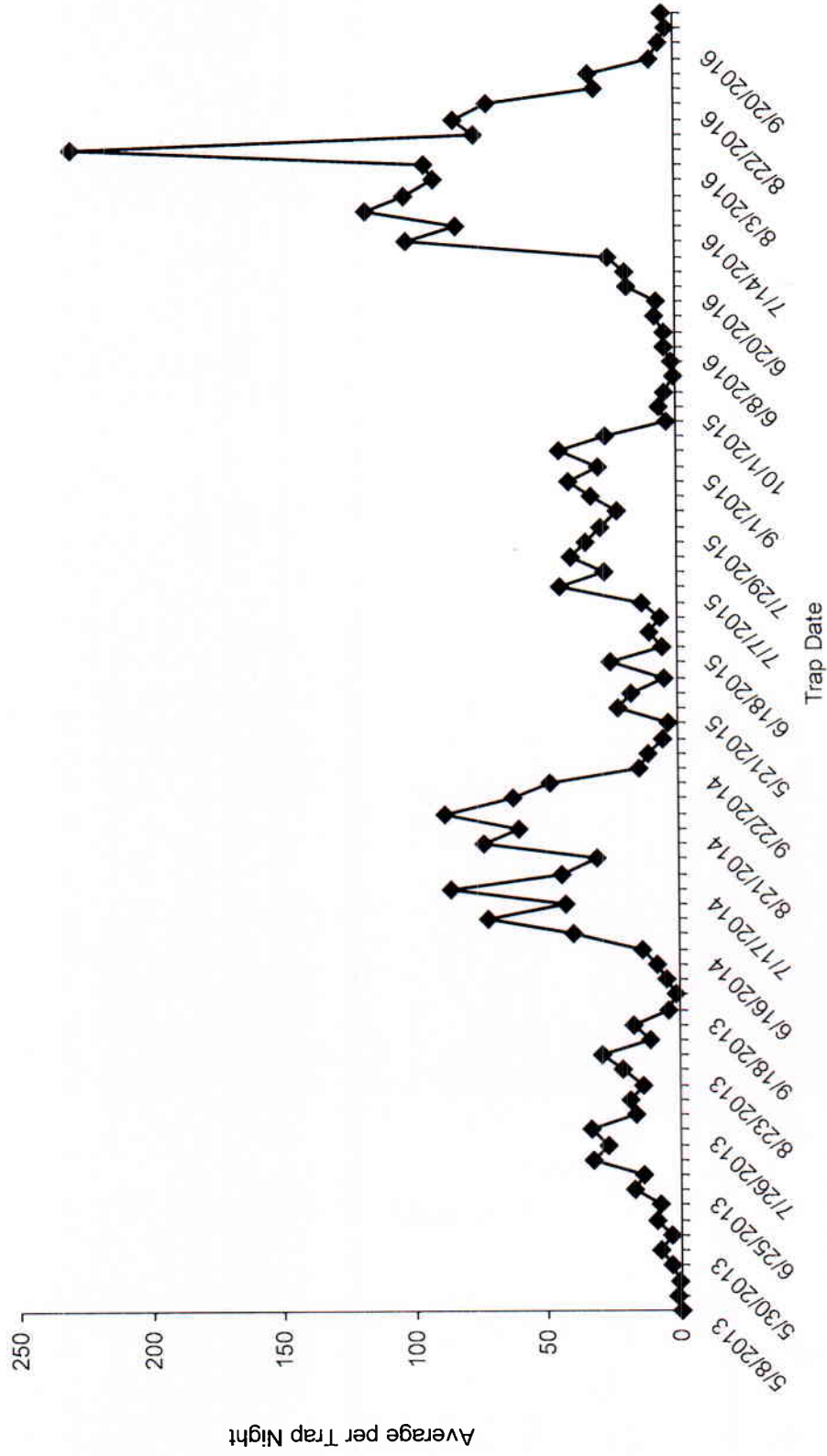
Overall Totals: 15 14 0 0 0 0 0 0 0.00oz 480.0oz

NA: 0 LV: 0
 EC: 0 AT: 14
 BC: 0 NR: 0

Adult Mosquito Surveillance Summary



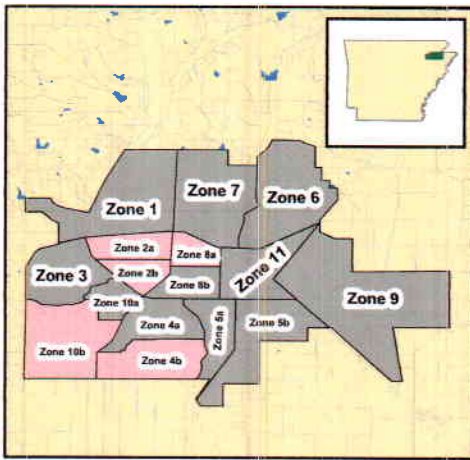
Jonesboro



Vector Disease Control International
2221 N. Church Street
Jonesboro, AR 72402
800-413-4445

Jonesboro, Arkansas

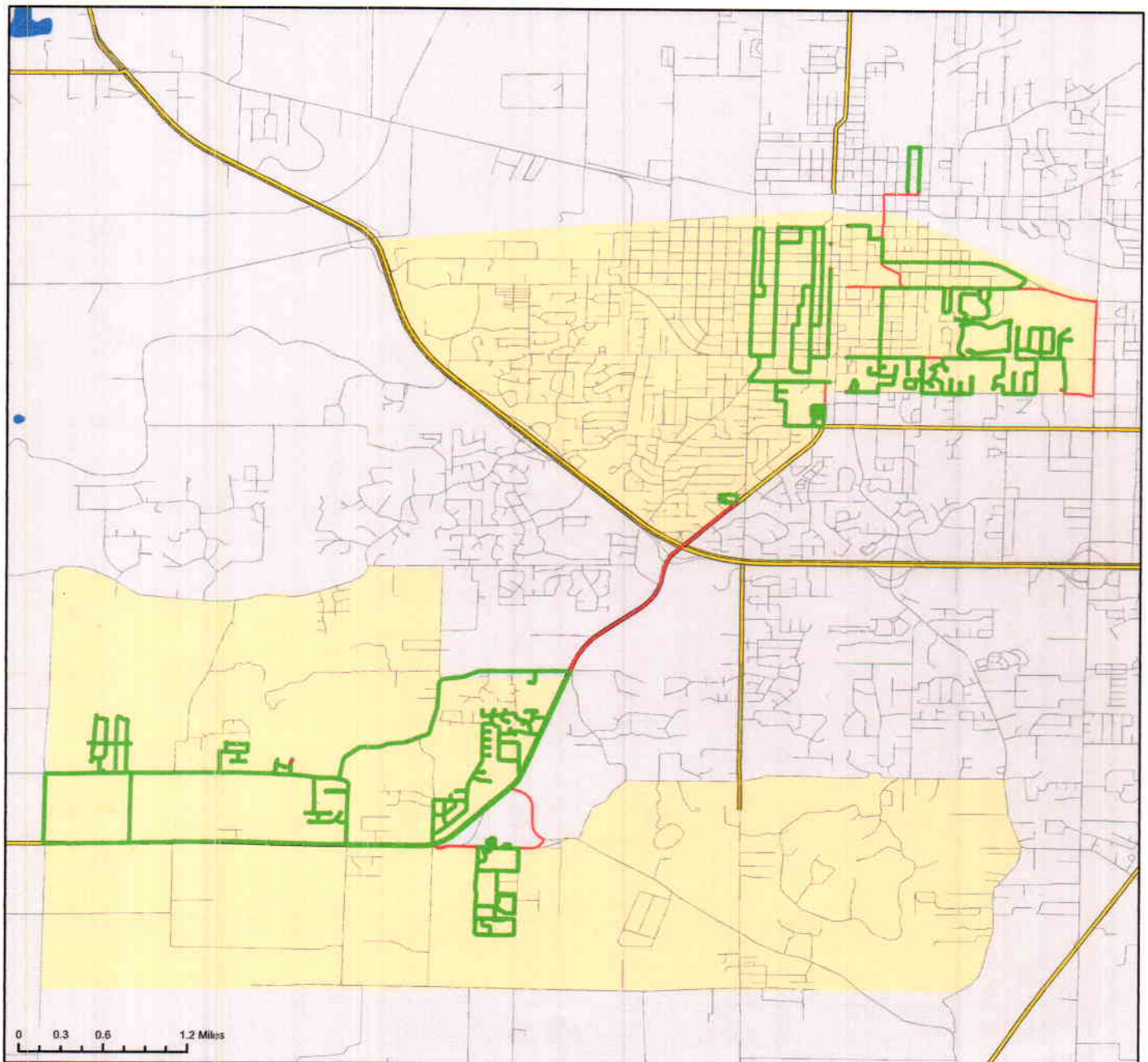
Ground Adulticide Application Date:
September 9, 2016



Sprayer Status

- Spray Off
- Spray On

Chemical: Kontrol 31-67
Quantity Used: 14.9 gal
Miles Treated: 78.5
Acres Treated: 2,559.0

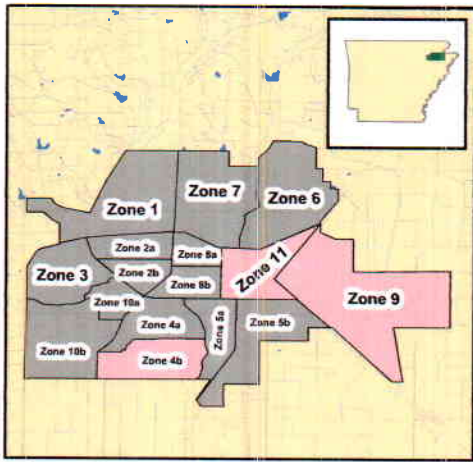


Vector Disease Control
1320 Brookland Dr., Suite H
Little Rock, AR 72202

These map products were developed for use by VDCI for its internal purposes only and were not designed or intended for general use by members of the public. VDCI makes no representation or warranty as to its accuracy, timeliness, or completeness, and in particular, its accuracy in labeling or displaying dimensions, contours, property boundaries, or placement or location of any map features thereon. ©2016 VDCI. All rights reserved.

Jonesboro, Arkansas

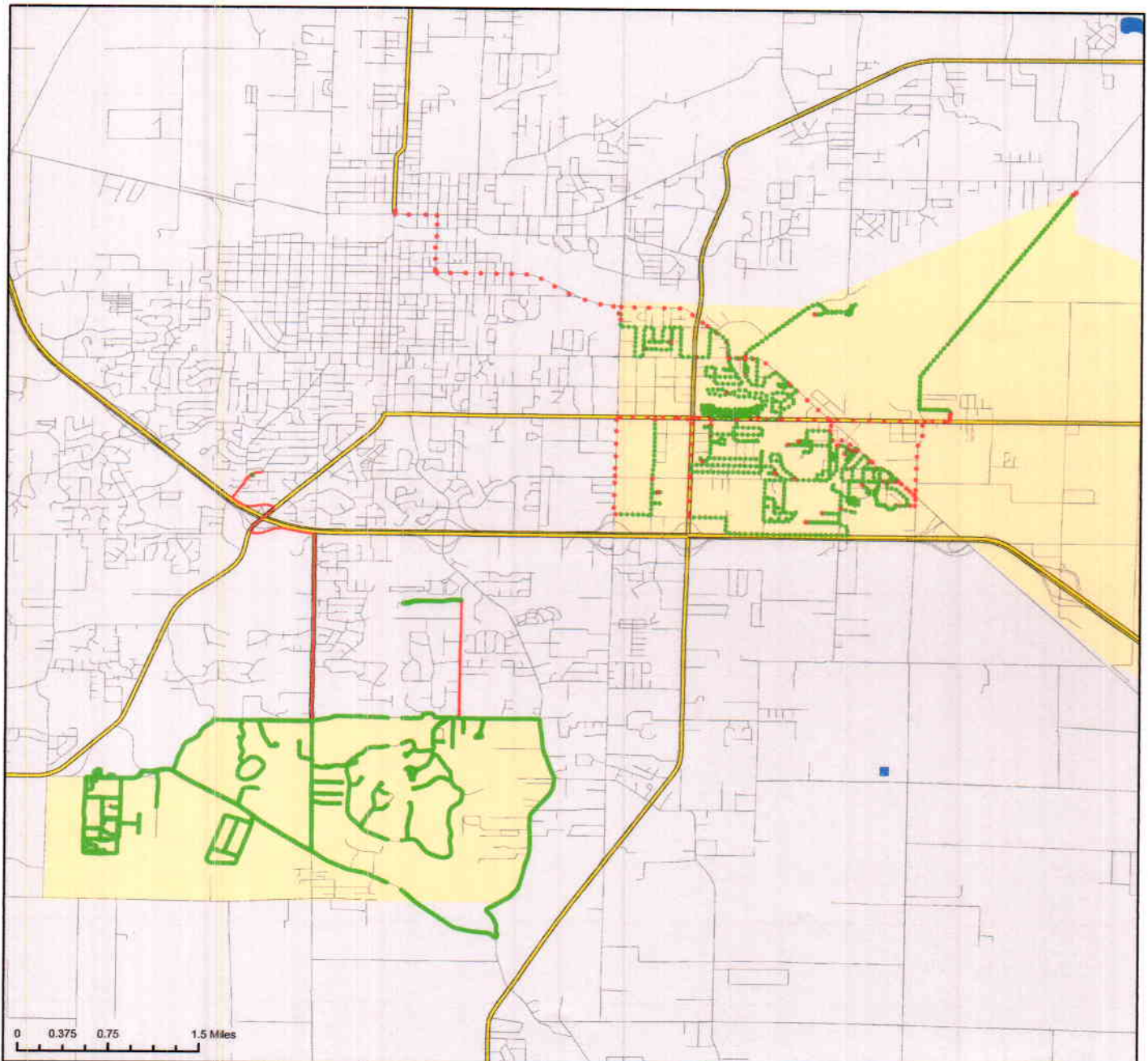
Ground Adulticide Application Date:
September 12, 2016



Sprayer Status

- Spray Off
- Spray On

Chemical: Kontrol 31-67
Quantity Used: 13.8 gal
Miles Treated: 74.6
Acres Treated: 2,710.0

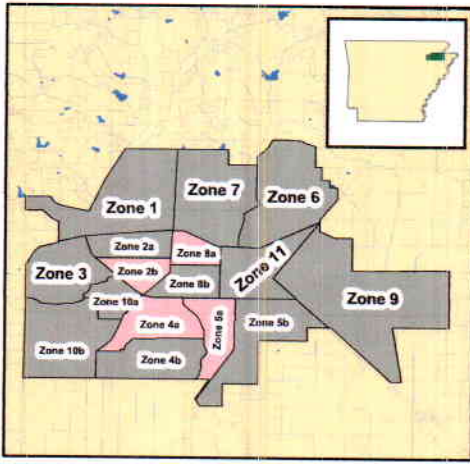


Vector Disease Control
1320 Brookland Dr., Suite H
Little Rock, AR 72202

These map products were developed for use by VDCI for its internal purposes only and were not designed or intended for general use by members of the public. VDCI makes no representation or warranty as to its accuracy, timeliness, or completeness, and in particular, its accuracy in labeling or displaying dimensions, contours, property boundaries, or placement or location of any map features thereon. © 2016 VDCI. All rights reserved.

Jonesboro, Arkansas

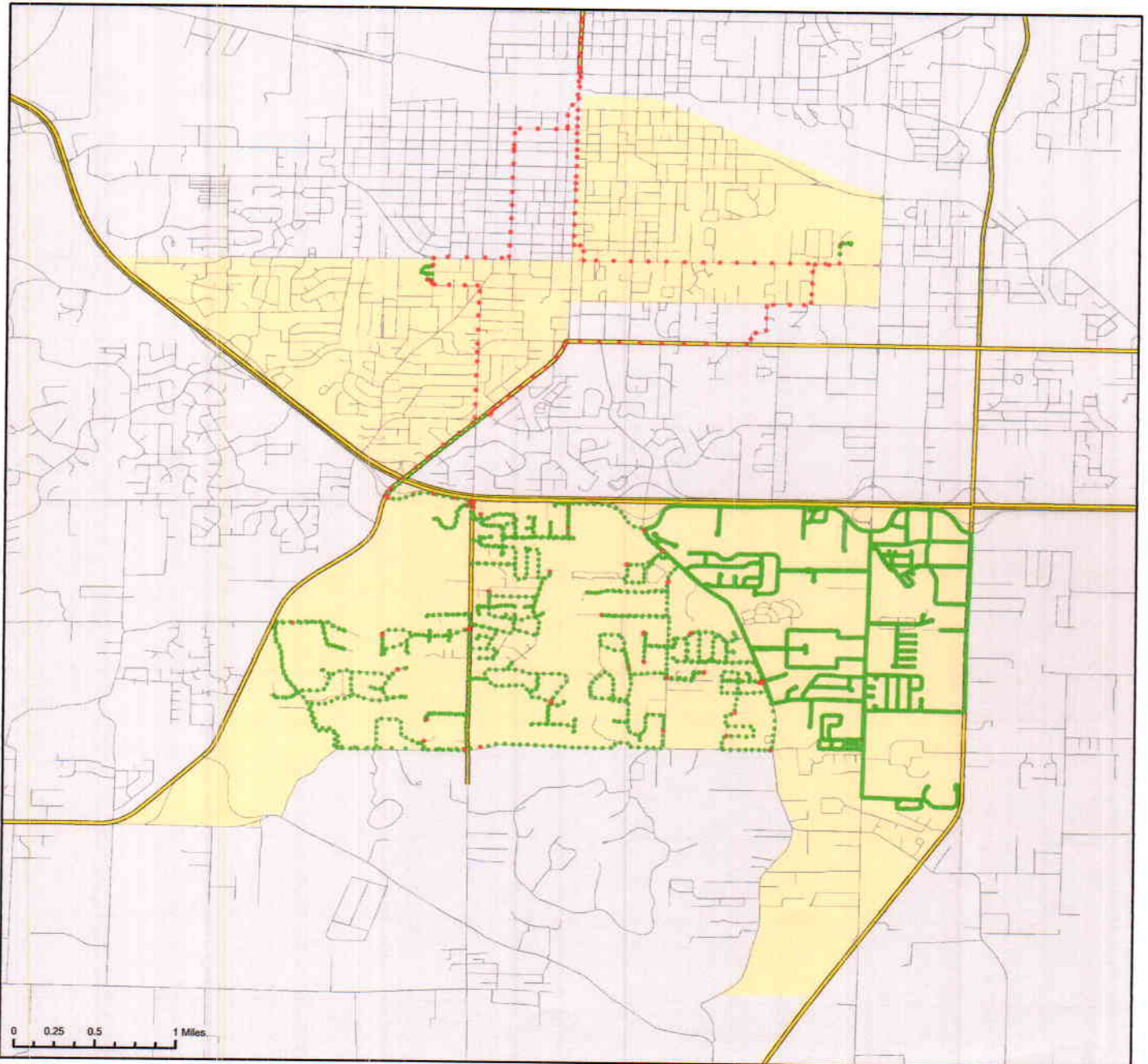
Ground Adulticide Application Date:
September 13, 2016



Sprayer Status

- Spray Off
- Spray On

Chemical: Kontrol 31-67
Quantity Used: 12.5 gal
Miles Treated: 66.7
Acres Treated: 2,421.0



Vector Disease Control
1320 Brookland Dr., Suite H
Little Rock, AR 72202

These map products were developed for use by VDCI for its internal purposes only and were not designed or intended for general use by members of the public. VDCI makes no representation or warranty as to its accuracy, timeliness, or completeness, and in particular, its accuracy in labeling or displaying dimensions, contours, property boundaries, or placement or location of any map features thereon. © 2016 VDCI. All rights reserved.

Craighead County



Area of Detail

Jonesboro, Arkansas

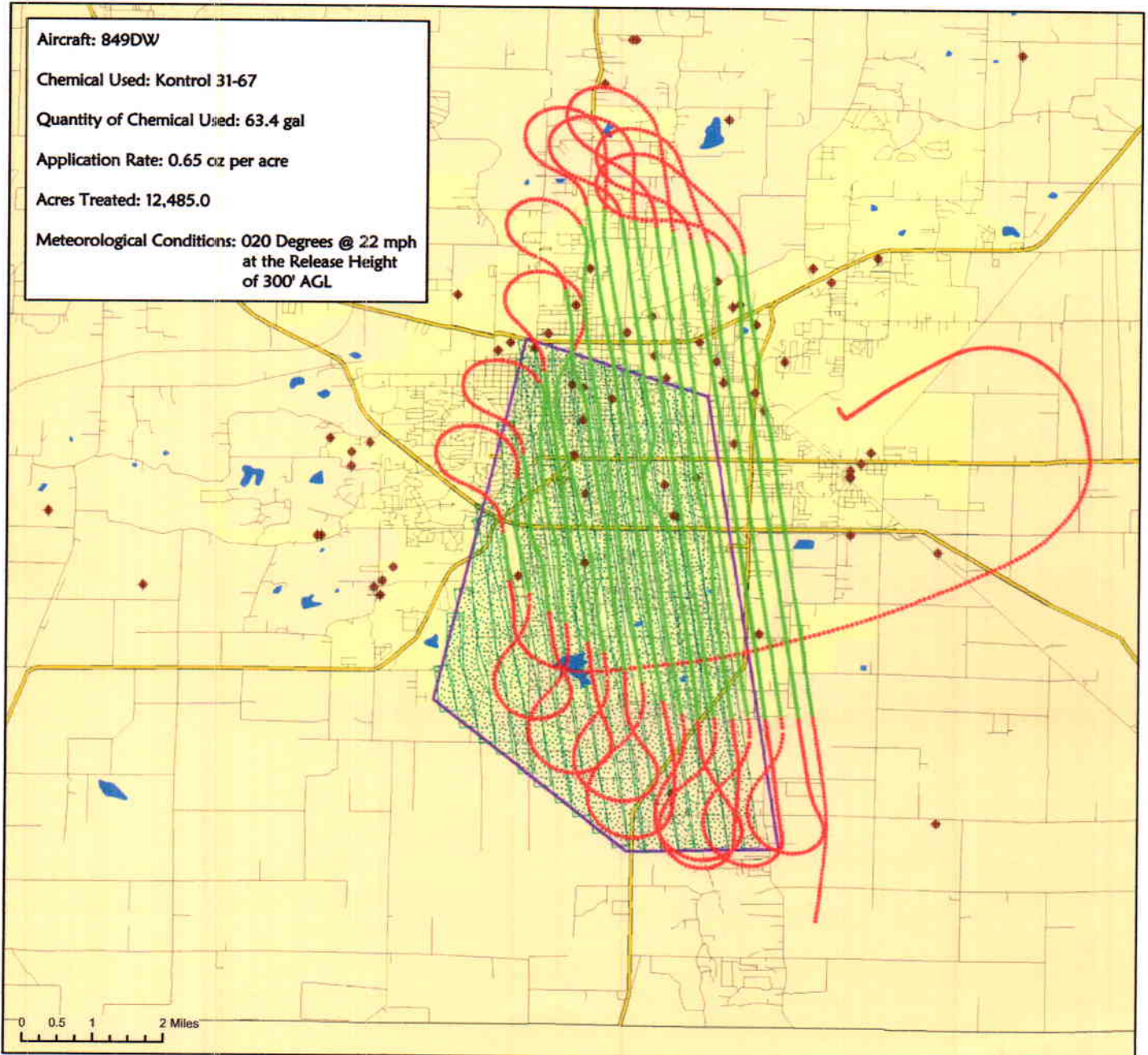
Aerial Adulticide Application Date:
September 1, 2016



- Flight Line
- Spray Off
- Spray On
- Towers
- Spray Deposition
- Treatment Areas



Aircraft: 849DW
Chemical Used: Kontrol 31-67
Quantity of Chemical Used: 63.4 gal
Application Rate: 0.65 oz per acre
Acres Treated: 12,485.0
Meteorological Conditions: 020 Degrees @ 22 mph
at the Release Height
of 300' AGL



Vector Disease Control
1320 Brookwood Dr., Suite H
Little Rock, AR 72202

These map products were developed for use by VDCI for its internal purposes only and were not designed or intended for general use by members of the public. VDCI makes no representation or warranty as to its accuracy, timeliness, or completeness, and in particular, its accuracy in labeling or displaying dimensions, contours, property boundaries, or placement or location of any map features thereon. © 2016 VDCI. All rights reserved.