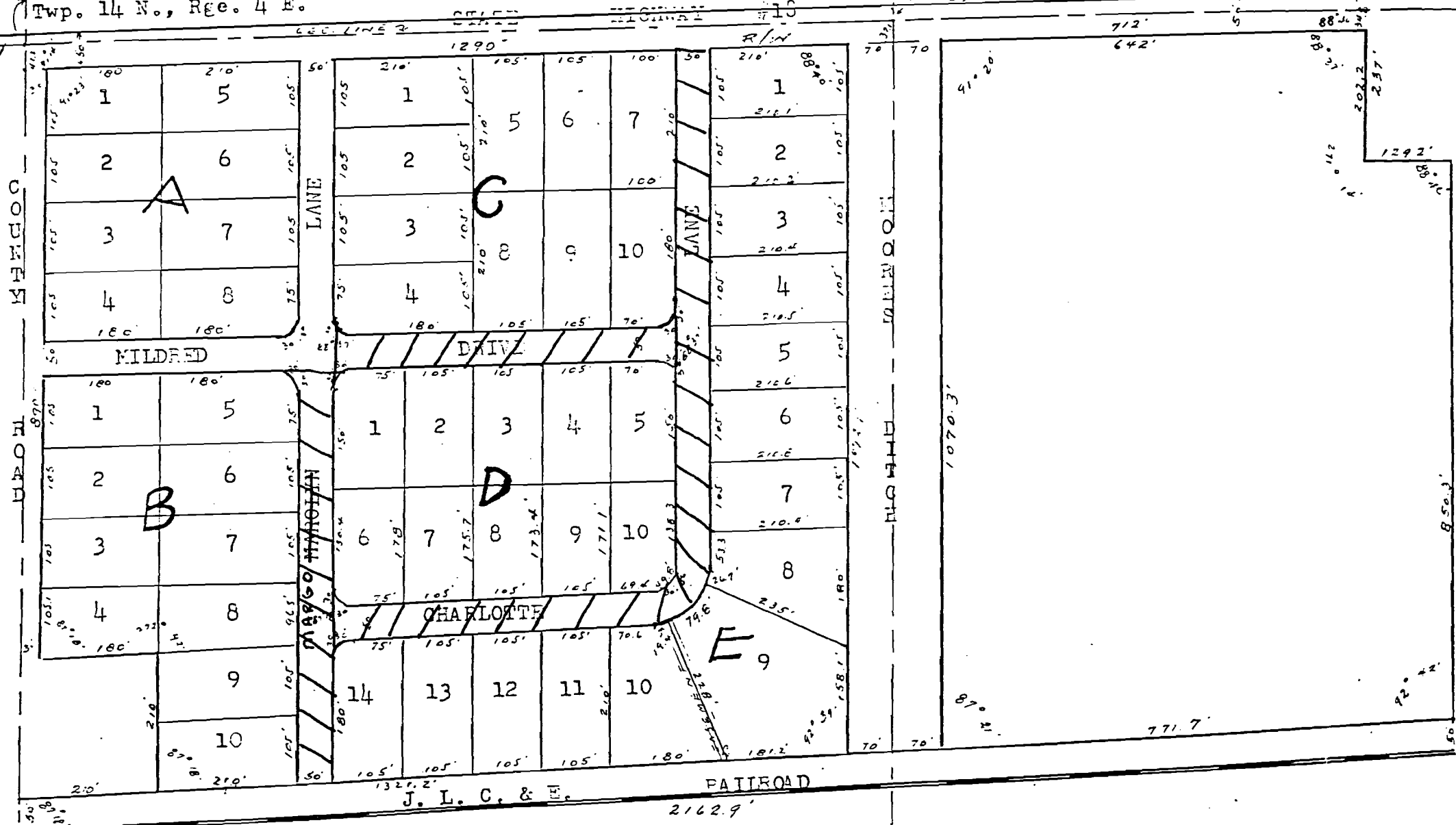


NW cor. Sec. 25,
Twp. 14 N., Rge. 4 E.

NW CORNER
NE 1/4 NW 1/4
25-14-E



J. L. C. & E.
2162.9'

PLAT OF LAZY ACRES, CRAIGHEAD COUNTY, ARKANSAS.
FILED: September 13, 1960, 3:10 P.M. Surveyed and Platted September, 1960.