



May 4, 2017

Brandon Wood, P.E., P.S.  
Wood Engineering & Surveying  
112 CR 7625  
Brookland, AR 72401

Re: Drainage Easement Abandonment – The Villas at Sage Meadows Phase II Lot 12

Dear Mr. Wood:

The City of Jonesboro Engineering and Planning Departments concur with the abandonment of a 15' drainage easement across lot 12 parallel to the south property lines, of The Villas at Sage Meadows Phase II in the City of Jonesboro, recorded in the Circuit Clerk's office of Craighead County, Book "C" Page 251 in the Craighead County Courthouse located in Jonesboro, Arkansas, as shown on the attached abandonment plat, with the following condition:

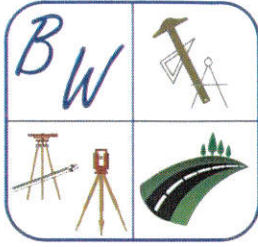
- 1.) The attached "Futrell Replat of lot 12 of the Villas at Sage Meadows Phase II" be recorded in the Circuit Clerk's office of Craighead County prior to the final abandonment of the existing 15' drainage easement.

Please call if more information is needed.

Sincerely,

Craig Light, PE, CFM  
City Engineer

Derrel Smith  
City Planner



**BRANDON WOOD, P.E., P.S.  
ENGINEERING & SURVEYING**

112 CR 7625  
BROOKLAND, AR 72417  
PHONE NO: (870) 930-7504  
E-MAIL: [BWOOD@WOODENGR.COM](mailto:bwood@woodengr.com)  
[WWW.BWOODENGINEERING.COM](http://WWW.BWOODENGINEERING.COM)

---

February 27, 2017

City of Jonesboro  
Engineering Department  
Craig Light, P.E., City Engineer  
300 S. Church St.  
Jonesboro, AR. 72401

**RE: The Villas at Sage Meadows Phase II lot 12  
Drainage Easement Abandonment Concurrence Letter Request**

Mr. Light,

Please accept this letter as a formal request to concur with the abandonment of a fifteen (15') drainage easement across lot 12 parallel to the south property lines, of The Villas at Sage Meadows Phase II in the City of Jonesboro, recorded in the Circuit Clerk's office of Craighead County, Book 'C' Page 251 in the Craighead County Courthouse located in Jonesboro, Arkansas, as shown on the attached plat.

Please provide a letter to the city clerk, Donna Jackson, indicating City of Jonesboro Engineering Department concurs with the request.

Please reply by letter to Nikki Nottingham in Donna Jackson's office by email. Also, please send a copy to me at [bwood@woodengr.com](mailto:bwood@woodengr.com).

Thanks for your assistance.

If you have any questions, contact me at (870) 930-7504 or [bwood@woodengr.com](mailto:bwood@woodengr.com) at your convenience.

Sincerely,

Brandon Wood, P.E., P.S., CPESC, GISP

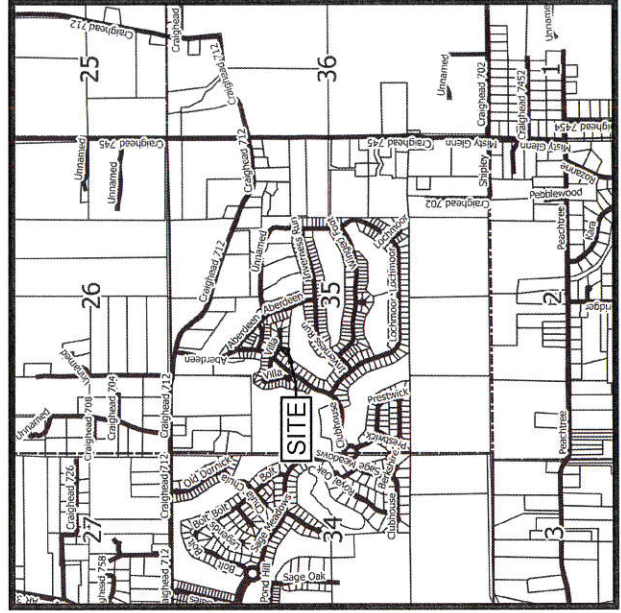
BRANDON G. WOOD  
 ARKANSAS SURVEYOR  
 No. 1817

UNRECORDED

ABANDONMENT PLAT  
 FOR LOT 12 OF THE VILLAS AT SAGE MEADOWS PHASE II  
 JONESBORO, CRAIGHEAD COUNTY, ARKANSAS  
 CLIENT: TONY & KIM FUTRELL

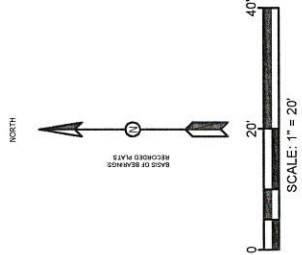
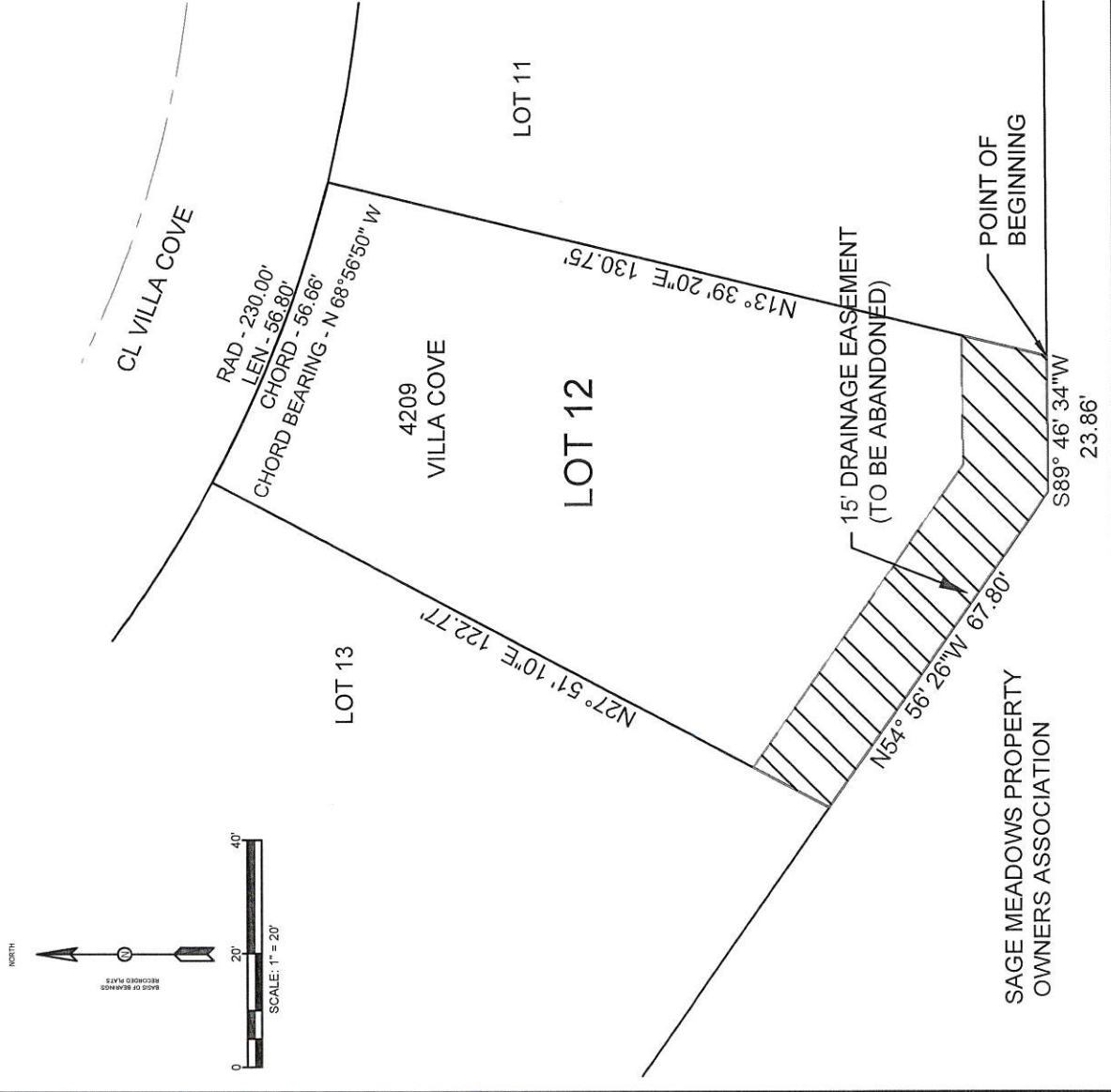
DATE: 2/27/17  
 REV:

BRANDON WOOD, P.E., P.S.  
 ENGINEERING & SURVEYING  
 112 CR 7825  
 BROOKLAND, AR 72417  
 PH: (870) 809-2524  
 FAX: (870) 872-0024  
 WWW.BWOODENGINEERING.COM



VICINITY MAP  
 (NOT TO SCALE)

**DESCRIPTION OF EASEMENT TO BE ABANDONED:**  
 A PART OF LOT 12 OF THE VILLAS AT SAGE MEADOWS PHASE II RECORDED  
 IN PLAT CABINET "C", PAGE 251, CRAIGHEAD COUNTY, ARKANSAS, SECTION 35,  
 TOWNSHIP 15 NORTH, RANGE 4 EAST, BEING MORE PARTICULARLY  
 DESCRIBED AS FOLLOWS:  
 From the Southeast Corner of said Lot 12; thence South 89°46'34" West 23.86 feet;  
 thence North 54°56'26" West 67.80 feet; thence North 27°51'10" East 15.12 feet;  
 thence South 54°56'26" East 64.93 feet; thence North 89°46'34" East 22.80 feet;  
 thence South 13°39'20" West 15.45 feet to the point of beginning proper, having an  
 area of 1,345.37 square feet, 0.03 acres more or less.



SAGE MEADOWS PROPERTY  
 OWNERS ASSOCIATION

