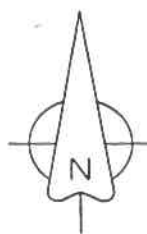


07 JAN -2 PM 3:39
 ANN BROWN
 CIRCUIT AND CLERK
 COUNTY CLERK

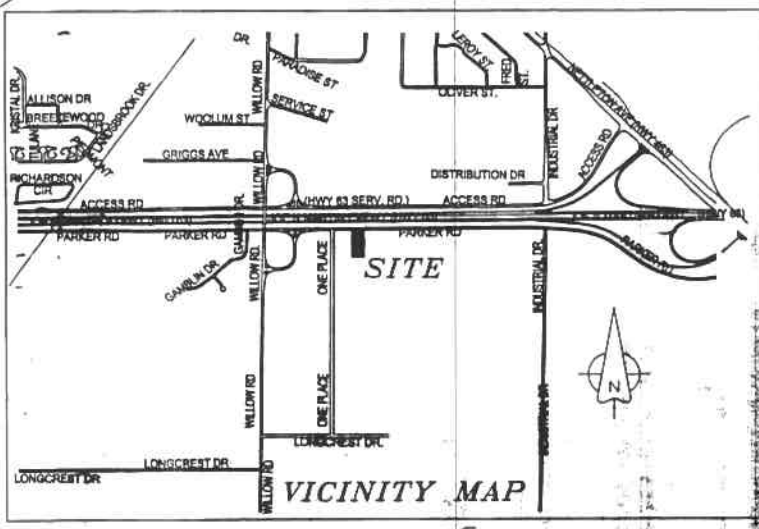
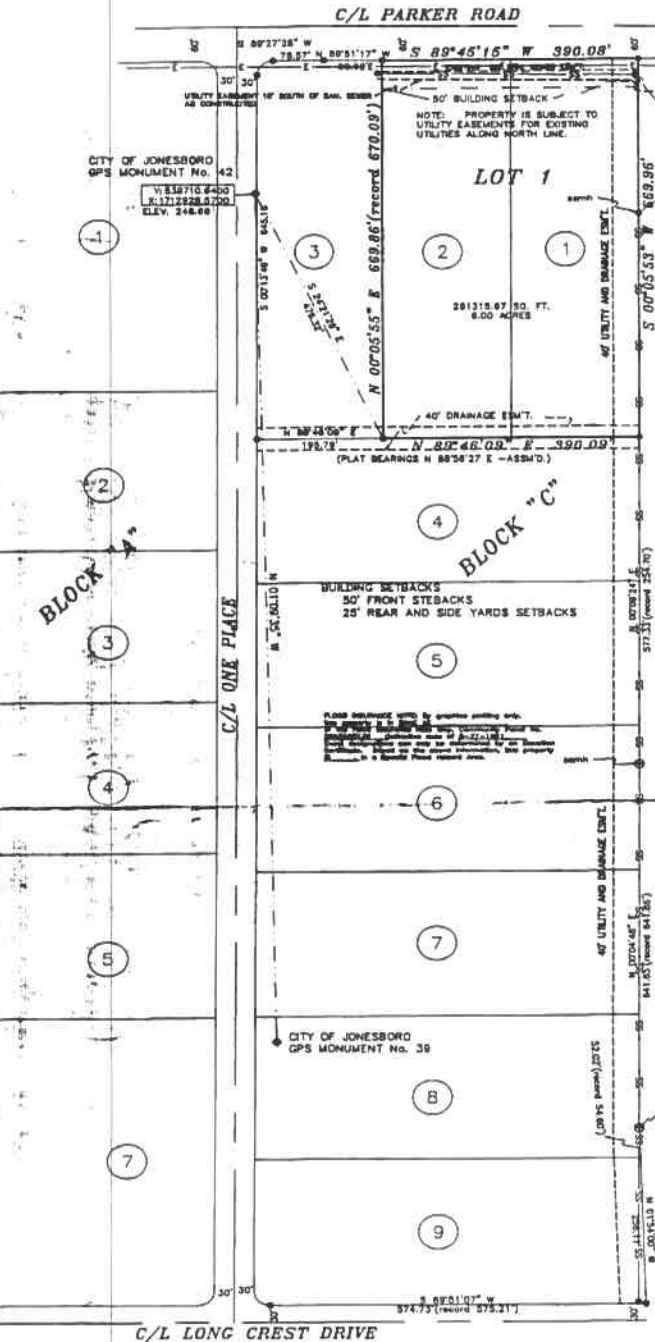
RECORDED PAGE 181
 DATE 12-22-06
 COUNTY CLERK
 ANN BROWN

U.S. HIGHWAY # 63

GENERAL NOTES:
 1. ALL BUILDING SETBACKS TO CONFORM TO I-2 ZONING REQUIREMENTS.
 2. PLAT BEARINGS ARE ROTATED TO MATCH THE CITY OF JONESBORO DATUM



BEARINGS AND SPC. DIST. BEARINGS
 AS PER CITY OF JONESBORO
 MONUMENTS AS SHOWN ON PLAT HEREIN



**HARMONY GARDENS REPLAT
 OF LOTS 1 AND 2
 IN BLOCK "C"
 FREEWAY INDUSTRIAL PARK
 JONESBORO, ARKANSAS**

DESCRIPTION:
 A REPLAT OF LOTS 1 AND 2 AND IN BLOCK "C" OF FREEWAY INDUSTRIAL PARK TO THE CITY OF JONESBORO, ARKANSAS AS SHOWN BY PLAT IN PLAT CABINET "B" AT PAGE 95 IN THE OFFICE OF CIRCUIT COURT CLERK AND EX-OFFICIO RECORDER, CRAIGHEAD COUNTY, ARKANSAS

OWNER CERTIFICATION:
 WE HEREBY CERTIFY THAT WE THE OWNERS OF THE PROPERTY SHOWN AND DESCRIBED HEREON AND THAT WE ADOPT THE PLAN OF THE SUBDIVISION AND DEDICATED PERPETUAL USE OF ALL STREETS AND EASEMENTS AS NOTED AND WE FURTHER CERTIFY THAT WE HAVE READ AND ACKNOWLEDGED THE FOLLOWING STATEMENT.

THE SUBDIVIDER OR DEVELOPER MUST, BEFORE THE SALE OF ANY LOT OR LOTS, EITHER COMPLETE THE IMPLEMENTS DESIGNED IN SECTION 15.16.01 OF THE JONESBORO SUBDIVISION REGULATION AND AS SPECIFICALLY IDENTIFIED IN THE RECORD PLAT AND SUPPORT DOCUMENTATION OR FURNISH THE METROPOLITAN AREA PLANNING COMMISSION EVIDENCE THAT AN APPROPRIATELY FUNDED ESCROW AGREEMENT IN THE AMOUNT OF CONTRACT COST OF STREET IMPROVEMENTS REQUIRED BY SECTION 16.15.01 THAT ARE NOT COMPLETED AT THE DATE OF SALE OF THE LOT OR LOTS FROM CLOSEST IMPROVED STREET TO AND INCLUDING ALL FRONT FEET OF SAID LOT OR LOTS

x S&K, LLC *Kathy Smith, Member* 12-22-06

Steve Smith, Manager, Member 12-22-2006

SURVEYOR'S CERTIFICATION:
 THIS IS TO CERTIFY I HAVE ON THIS DATE SURVEYED THE ABOVE DESCRIBED PROPERTY IN ACCORDANCE WITH MONUMENTS FOUND AND THIS PLAT CONFORMS TO THAT SURVEYED.

H & S HIME PROFESSIONAL SURVEYING SERVICES
 PMB #283, 2704 SO. CULBERHOUSE STE "L"
 JONESBORO, ARKANSAS

DEC 22 2006
 CITY OF JONESBORO
 PLANNING & INSPECTION DEPT.
 P. O. BOX 1845
 JONESBORO, AR 72403

APPROVED
[Signature]
 MP-06-17

LEGEND

- Three standard symbols will be found in the drawing.
- POWER POLE
 - REBAR FOUND
 - IRON PIN FOUND
 - MANHOLE
 - LIGHT POLE
 - E — ELECTRIC
 - G — GAS LINE
 - S — SANITARY SEWER
 - F — FENCE
 - ▲ SET 1/2" REBAR/ WITH CAP
 - CALCULATED CORNER
 - HIGHWAY CONC. R/W MARKER
 - PD COTTON PICKER SPINDLE
 - PD PK NAIL



**HARMONY GARDENS REPLAT OF
 LOTS 1 AND 2 BLOCK "C"
 JONESBORO, ARKANSAS**

RECORD PLAT	
DATE	12-12-06
BY	STEVE AND TODD SMITH

H & S HIME PROFESSIONAL SURVEYING SERVICES
 PMB # 283
 2704 SOUTH CULBERHOUSE
 JONESBORO, ARKANSAS 72403
 PHONE: 870 873 1288
 FAX: 870 - 873-1011
 E-MAIL: hshime@hshime.com