



BARRINGTON PARK PHASE IX

JONESBORO, AR

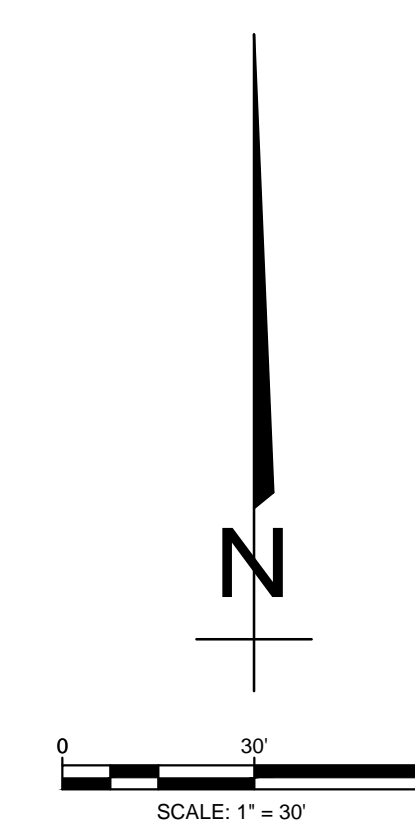
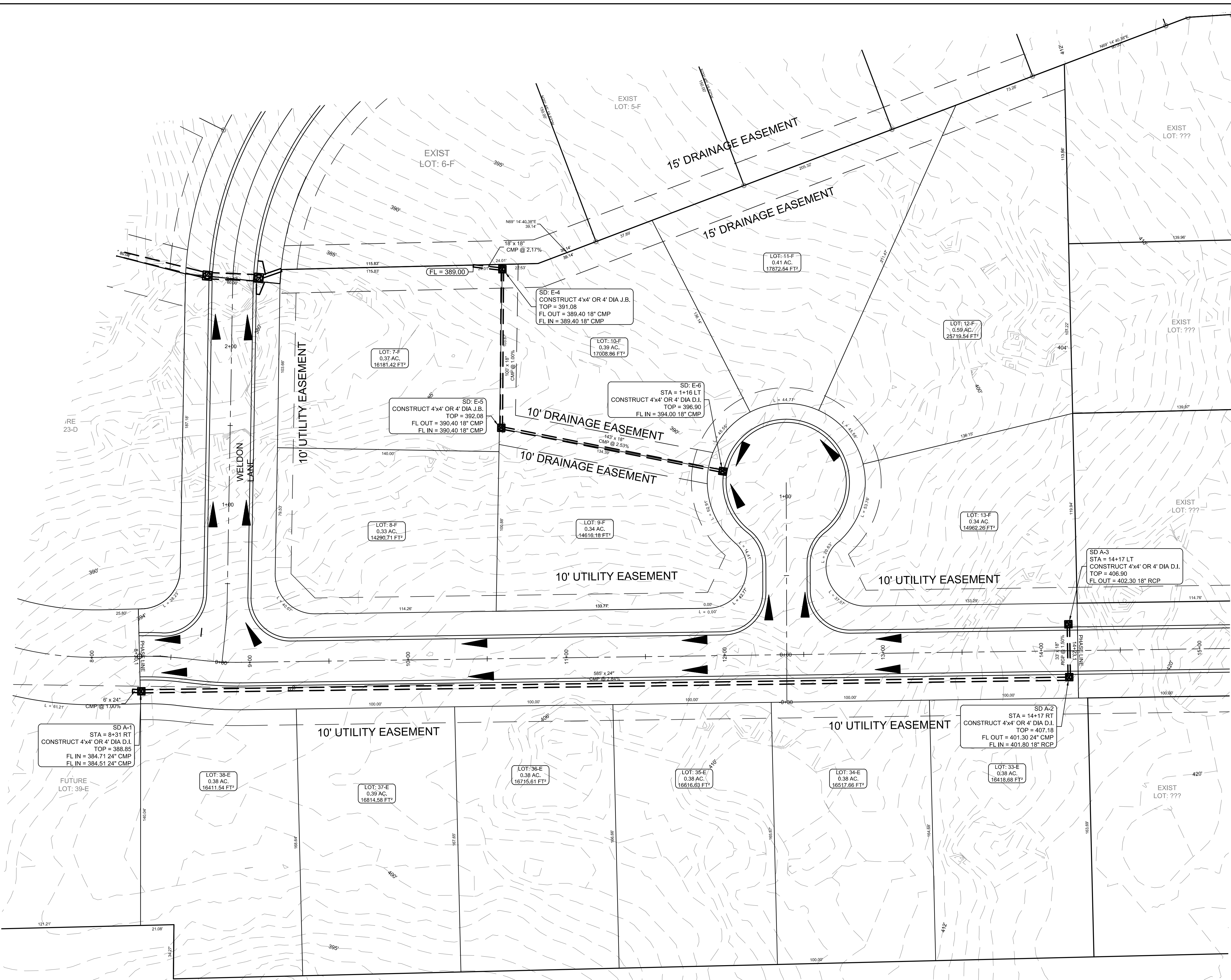
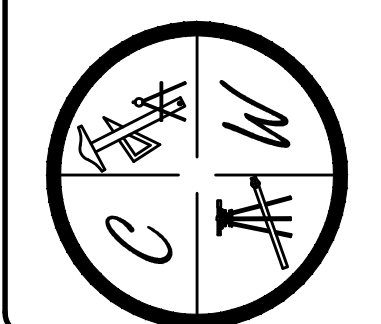
TOPOGRAPHY
& DRAINAGE PLAN

DATE: 11/24/15

REV:

DRAWN BY: BGW

CARLOS WOOD, P.E.
ENGINEERING CONSULTANT
148 CR 375
BONO, AR 72416
PHONE/FAX: (870) 972-8335
EMAIL: WOODENGR@SBCGLOBAL.NET
WEBSITE: WWW.WOODENGR.COM



LEGEND	
	CURB
	EXISTING CONTOUR
	PROPOSED CONTOUR
	STORM DRAIN INLET
	STORM DRAIN PIPE
	BENCHMARK

PIPE NOTE:
ALL PIPE SHALL MEET THE FOLLOWING STANDARDS.

- ALUMINIZED STEEL TYPE 2 STEEL PIPE
 - ASTM A-929
 - ASTM A-760
- RCP CLASS III OR CLASS IV
 - ASTM C-76
 - ASTM C-506
 - ASTM C-507

NOTE:
DEVELOPER SHALL OBTAIN GRADING PERMIT FROM THE CITY OF JONESBORO ENGINEERING DEPARTMENT PRIOR TO COMMENCING EARTHWORK AND/OR CLEARING OPERATIONS.

DEVELOPER SHALL OBTAIN REQUIRED ADEQ PERMIT PRIOR TO COMMENCING WORK ON THE SITE. PREPARE A SWPP PLAN, AND DISPLAY THEM FOR PUBLIC ACCESS AT THE SITE.

SURVEY CONTROL REFERENCE MARKS:

- JONESBORO MONUMENT # 89
- JONESBORO MONUMENT # 43

VERTICAL CONTROL IS NAVD 88
HORIZONTAL CONTROL IS NAD 83