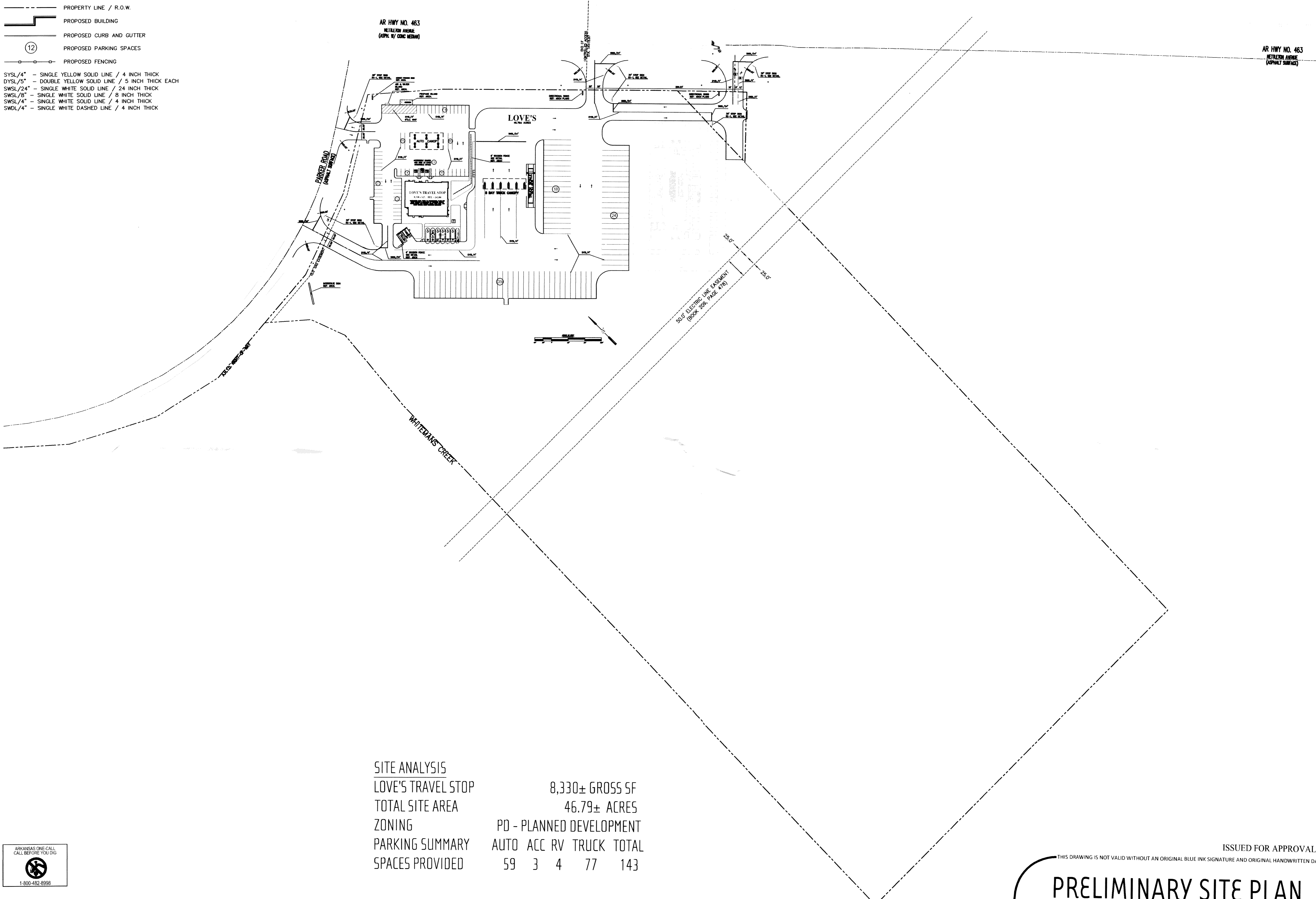


LEGEND FOR PROPOSED IMPROVEMENTS

- PROPERTY LINE / R.O.W.
 - ▬ PROPOSED BUILDING
 - ▬ PROPOSED CURB AND GUTTER
 - ⊙ PROPOSED PARKING SPACES
 - ⊙ PROPOSED FENCING
- SYSL/4" - SINGLE YELLOW SOLID LINE / 4 INCH THICK
 DYSL/5" - DOUBLE YELLOW SOLID LINE / 5 INCH THICK EACH
 SWSL/24" - SINGLE WHITE SOLID LINE / 24 INCH THICK
 SWSL/8" - SINGLE WHITE SOLID LINE / 8 INCH THICK
 SWSL/4" - SINGLE WHITE SOLID LINE / 4 INCH THICK
 SWDL/4" - SINGLE WHITE DASHED LINE / 4 INCH THICK

EXISTING LEGEND

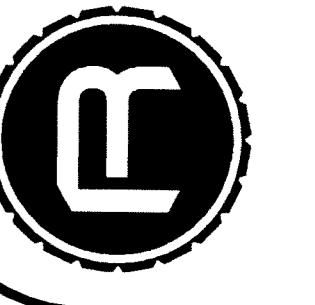


SITE ANALYSIS	
LOVE'S TRAVEL STOP	8,330± GROSS SF
TOTAL SITE AREA	46.79± ACRES
ZONING	PD - PLANNED DEVELOPMENT
PARKING SUMMARY	AUTO ACC RV TRUCK TOTAL
SPACES PROVIDED	59 3 4 77 143

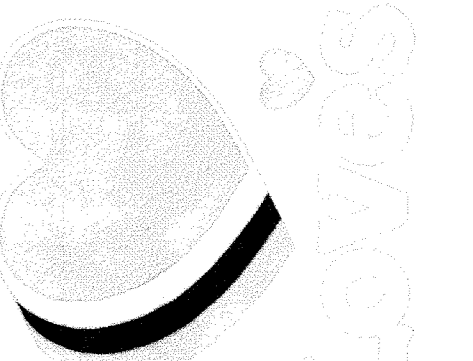


RC 130111
 file: 130111p10
 drawn: jcs
 date: 05-29-2013

RESOURCECONSULTING
 CIVIL ENGINEERING
 2223 Quail Run Drive - Resource Suite 02
 Baton Rouge, Louisiana 70808
 ResourceConsulting@hotmail.com
 Tel: (225) 761-9909, Fax: (225) 766-6672



LOVE'S TRAVEL STOP
 US HIGHWAY 63 EXIT 40 @ E NETTLETON AVE
 JONESBORO, ARKANSAS



ISSUED FOR APPROVAL - NOT FOR CONSTRUCTION

THIS DRAWING IS NOT VALID WITHOUT AN ORIGINAL BLUE INK SIGNATURE AND ORIGINAL HANDWRITTEN DATE OF A LICENSED PROFESSIONAL ENGINEER.

PRELIMINARY SITE PLAN

P-10