

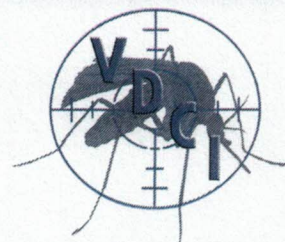
# August 2021 Mosquito Control Report



Jonesboro, AR

Prepared by:  
**Vector Disease Control**  
2221 South Church  
Jonesboro, AR 72401  
[www.vdci.net](http://www.vdci.net)  
Office: 870-933-6939

Global Leaders in Mosquito Control







## **City of Jonesboro Activity Report**

**August 2021**

Vector Disease Control, Inc. (VDCI) provides a proven, scientific approach to mosquito control for the City of Jonesboro. VDCI's operations include larval and adult mosquito surveillance followed by the application of larvicides and adulticides. In addition, our office responds to service requests from the public.

### **Mosquito Surveillance**

VDCI has utilized a total of **(13)** New Jersey light traps placed in residential and recreational areas throughout Jonesboro. These traps collected an average of **56.202** mosquito per trap night (**1,419** total mosquitoes) during this time. There have been a total of **2** mosquito species collected, with **Annophles Quadrimaculatus** being the most predominant species.

### **Larval Control Activity**

Permanent water, flood water, artificial containers, and drainage system sites are inspected for larval mosquito breeding on a regular basis. In total, **9** sites inspected with **0** sites having mosquito larvae present. As a result of these inspections, **0.00** ounces of granular BTI (Aquabac 200g) was applied to these mosquito breeding sites. Additionally, VDCI is continuing to eliminate breeding habitat for artificial container mosquitoes by targeting bird baths, buckets, tires etc.

2221 N. Church St. Jonesboro, AR 72401

T-855.933.6939 F- 870.933.0122

[www.vdci.net](http://www.vdci.net)







## Adult Mosquito Control Activity

In response to community events and mosquito surveillance data, VDCI applied the adulticide on **33** truck routes for this reporting period. All adulticide ULV applications were made with truck-mounted ULV units equipped with GPS-enabled monitors. During this report period, a total of **1,400.3** spray miles (**50,916.10 acres**) were treated with a total of **273.50** gallons of adulticide in residential and recreational areas. In addition to routine truck spraying, VDCI has responded to **46** service request and adulticided all parks, and any special events during the month.

## Summary

Throughout this reporting period, VDCI has continued to provide exceptional control of larval and adult mosquito populations. VDCI will remain diligent in our surveillance and control activities to prevent a significant increase in the mosquito population. If VDCI detects a significant rise in the mosquito population we will increase larval and adult control. As always, VDCI welcomes residents with any mosquito-related questions or concerns to contact VDCI's Jonesboro office directly at 855.933.6939.





# Ground Adulticide Applications

Start Date: 08/01/2021 End Date: 08/31/2021

## Jonesboro

Month	Date	Municipality	Chemical	Mix Ratio	Trip Miles	Spray Miles	Spray Acres	Gallons Sprayed
<b>Jonesboro Zone 01 Applications</b>								
August 2021	08/20/2021	Jonesboro	Perm-X UL 30-30 (89459-44)	1:4	54.0	32.0	1,163.5	11.0
					<b>Total Perm-X UL 30-30 Applied: 11.0</b>			
					<b>Jonesboro Zone 01 Totals: 54.0 32.0 1,163.5 11.0</b>			

<b>Jonesboro Zone 02B Applications</b>								
August 2021	08/31/2021	Jonesboro	Perm-X UL 30-30 (89459-44)	1:5	47.0	39.4	1,430.8	6.0
					<b>Total Perm-X UL 30-30 Applied: 6.0</b>			
					<b>Jonesboro Zone 02B Totals: 47.0 39.4 1,430.8 6.0</b>			

<b>Jonesboro Zone 03 Applications</b>								
August 2021	08/24/2021	Jonesboro	Perm-X UL 30-30 (89459-44)	1:4	47.2	46.6	1,695.5	10.0
					<b>Total Perm-X UL 30-30 Applied: 10.0</b>			
					<b>Jonesboro Zone 03 Totals: 47.2 46.6 1,695.5 10.0</b>			

<b>Jonesboro Zone 04A Applications</b>								
August 2021	08/03/2021	Jonesboro	Perm-X UL 30-30 (89459-44)	1:4	44.1	35.4	1,288.0	7.0
August 2021	08/05/2021	Jonesboro	Perm-X UL 30-30 (89459-44)	1:4	37.1	36.6	1,331.5	8.0



Month	Date	Municipality	Chemical	Mix Ratio	Trip Miles	Spray Miles	Spray Acres	Gallons Sprayed
	08/10/2021	Jonesboro	Perm-X UL 30-30 (89459-44)	1:4	50.0	49.7	1,807.8	10.0
	08/23/2021	Jonesboro	Perm-X UL 30-30 (89459-44)	1:4	52.0	40.0	1,454.4	2.0
	08/27/2021	Jonesboro	Perm-X UL 30-30 (89459-44)	1:4	52.8	52.1	1,894.0	10.0
	08/31/2021	Jonesboro	Perm-X UL 30-30 (89459-44)	1:5	57.7	45.0	1,635.8	11.0

Total Perm-X UL 30-30 Applied: 48.0

Jonesboro Zone 04A Totals: 293.6 258.8 9,411.6 48.0

Jonesboro Zone 04B Applications

August 2021	08/05/2021	Jonesboro	Perm-X UL 30-30 (89459-44)	1:4	49.7	39.1	1,422.8	2.0
	08/13/2021	Jonesboro	Perm-X UL 30-30 (89459-44)	1:4	47.7	47.4	1,722.0	10.0
	08/20/2021	Jonesboro	Perm-X UL 30-30 (89459-44)	1:4	44.7	44.2	1,607.8	10.0

Total Perm-X UL 30-30 Applied: 22.0

Jonesboro Zone 04B Totals: 142.1 130.7 4,752.6 22.0

Jonesboro Zone 05A Applications

August 2021	08/01/2021	Jonesboro	Perm-X UL 30-30 (89459-44)	1:3	60.0	45.0	1,636.2	13.0
	08/26/2021	Jonesboro	Perm-X UL 30-30 (89459-44)	1:4	48.5	37.9	1,376.2	3.0

Total Perm-X UL 30-30 Applied: 16.0

Jonesboro Zone 05A Totals: 108.5 82.9 3,012.4 16.0

Jonesboro Zone 05B Applications

Vector Disease Control International  
2221 N Church St  
Jonesboro, AR 72401



Month	Date	Municipality	Chemical	Mix Ratio	Trip Miles	Spray Miles	Spray Acres	Gallons Sprayed
August 2021	08/09/2021	Jonesboro	Perm-X UL 30-30 (89459-44)	1:4	63.7	42.4	1,540.2	2.0
	08/13/2021	Jonesboro	Perm-X UL 30-30 (89459-44)	1:4	45.9	45.5	1,652.6	9.0
	08/23/2021	Jonesboro	Perm-X UL 30-30 (89459-44)	1:4	41.9	40.9	1,485.3	7.0

Total Perm-X UL 30-30 Applied: 18.0

Jonesboro Zone 05B Totals: 151.5 128.7 4,678.1 18.0

**Jonesboro Zone 06 Applications**

August 2021	08/03/2021	Jonesboro	Perm-X UL 30-30 (89459-44)	1:4	47.4	47.1	1,711.1	17.5
	08/06/2021	Jonesboro	Perm-X UL 30-30 (89459-44)	1:4	56.8	47.2	1,716.2	10.0
	08/16/2021	Jonesboro	Perm-X UL 30-30 (89459-44)	1:4	45.8	45.4	1,651.1	9.0
	08/25/2021	Jonesboro	Perm-X UL 30-30 (89459-44)	1:4	50.6	50.0	1,819.5	10.0

Total Perm-X UL 30-30 Applied: 46.5

Jonesboro Zone 06 Totals: 200.6 189.7 6,897.8 46.5

**Jonesboro Zone 07 Applications**

August 2021	08/20/2021	Jonesboro	Perm-X UL 30-30 (89459-44)	1:4	49.4	42.8	1,555.5	12.0
-------------	------------	-----------	-------------------------------	-----	------	------	---------	------

Total Perm-X UL 30-30 Applied: 12.0

Jonesboro Zone 07 Totals: 49.4 42.8 1,555.5 12.0

**Jonesboro Zone 08A Applications**



Month	Date	Municipality	Chemical	Mix Ratio	Trip Miles	Spray Miles	Spray Acres	Gallons Sprayed
August 2021	08/13/2021	Jonesboro	Perm-X UL 30-30 (89459-44)	1:4	55.0	43.0	1,563.5	6.0
	08/23/2021	Jonesboro	Perm-X UL 30-30 (89459-44)	1:4	45.2	44.5	1,618.4	8.0
					<i>Total Perm-X UL 30-30 Applied: 14.0</i>			
<i>Jonesboro Zone 08A Totals:</i>					<i>100.2</i>	<i>87.5</i>	<i>3,181.9</i>	<i>14.0</i>

<b>Jonesboro Zone 08B Applications</b>								
August 2021	08/26/2021	Jonesboro	Perm-X UL 30-30 (89459-44)	1:4	52.5	52.0	1,891.8	9.0
					<i>Total Perm-X UL 30-30 Applied: 9.0</i>			
<i>Jonesboro Zone 08B Totals:</i>					<i>52.5</i>	<i>52.0</i>	<i>1,891.8</i>	<i>9.0</i>

<b>Jonesboro Zone 10A Applications</b>								
August 2021	08/03/2021	Jonesboro	Perm-X UL 30-30 (89459-44)	1:4	43.4	47.1	1,711.1	8.0
	08/16/2021	Jonesboro	Perm-X UL 30-30 (89459-44)	1:4	48.3	34.0	1,234.4	6.0
	08/26/2021	Jonesboro	Perm-X UL 30-30 (89459-44)		39.5	38.5	1,400.2	9.0
					<i>Total Perm-X UL 30-30 Applied: 23.0</i>			
<i>Jonesboro Zone 10A Totals:</i>					<i>131.1</i>	<i>119.5</i>	<i>4,345.7</i>	<i>23.0</i>

<b>Jonesboro Zone 10B Applications</b>								
August 2021	08/02/2021	Jonesboro	Perm-X UL 30-30 (89459-44)	1:4	48.2	37.3	1,355.9	7.0
	08/24/2021	Jonesboro	Perm-X UL 30-30 (89459-44)	1:4	53.8	38.0	1,379.9	7.0
	08/31/2021	Jonesboro	Perm-X UL 30-30 (89459-44)	1:5	42.6	42.4	1,540.9	8.0



Month	Date	Municipality	Chemical	Mix Ratio	Trip Miles	Spray Miles	Spray Acres	Gallons Sprayed
-------	------	--------------	----------	-----------	------------	-------------	-------------	-----------------

*Total Perm-X UL 30-30 Applied: 22.0*

---

*Jonesboro Zone 10B Totals: 144.6 117.6 4,276.7 22.0*

**Jonesboro Zone 11 Applications**

August 2021	08/03/2021	Jonesboro	Perm-X UL 30-30 (89459-44)	1:4	48.4	35.4	1,287.9	9.0
	08/24/2021	Jonesboro	Perm-X UL 30-30 (89459-44)	1:4	44.6	36.7	1,334.4	7.0

*Total Perm-X UL 30-30 Applied: 16.0*

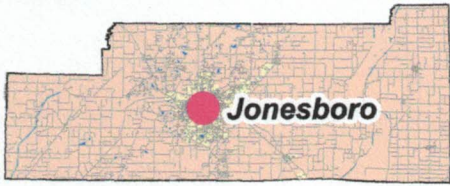
---

*Jonesboro Zone 11 Totals: 93.0 72.1 2,622.3 16.0*

**Grand Totals: 1,615.3 1,400.3 50,916.1 273.5**



# Craighead County



# Jonesboro, Arkansas

Aerial Adulticide Application Date:  
September 1, 2021



**Flight Line**

Spray Off

Spray On

Towers

Spray Deposition

Treatment Areas



**Aircraft: 415CC & 68MW**

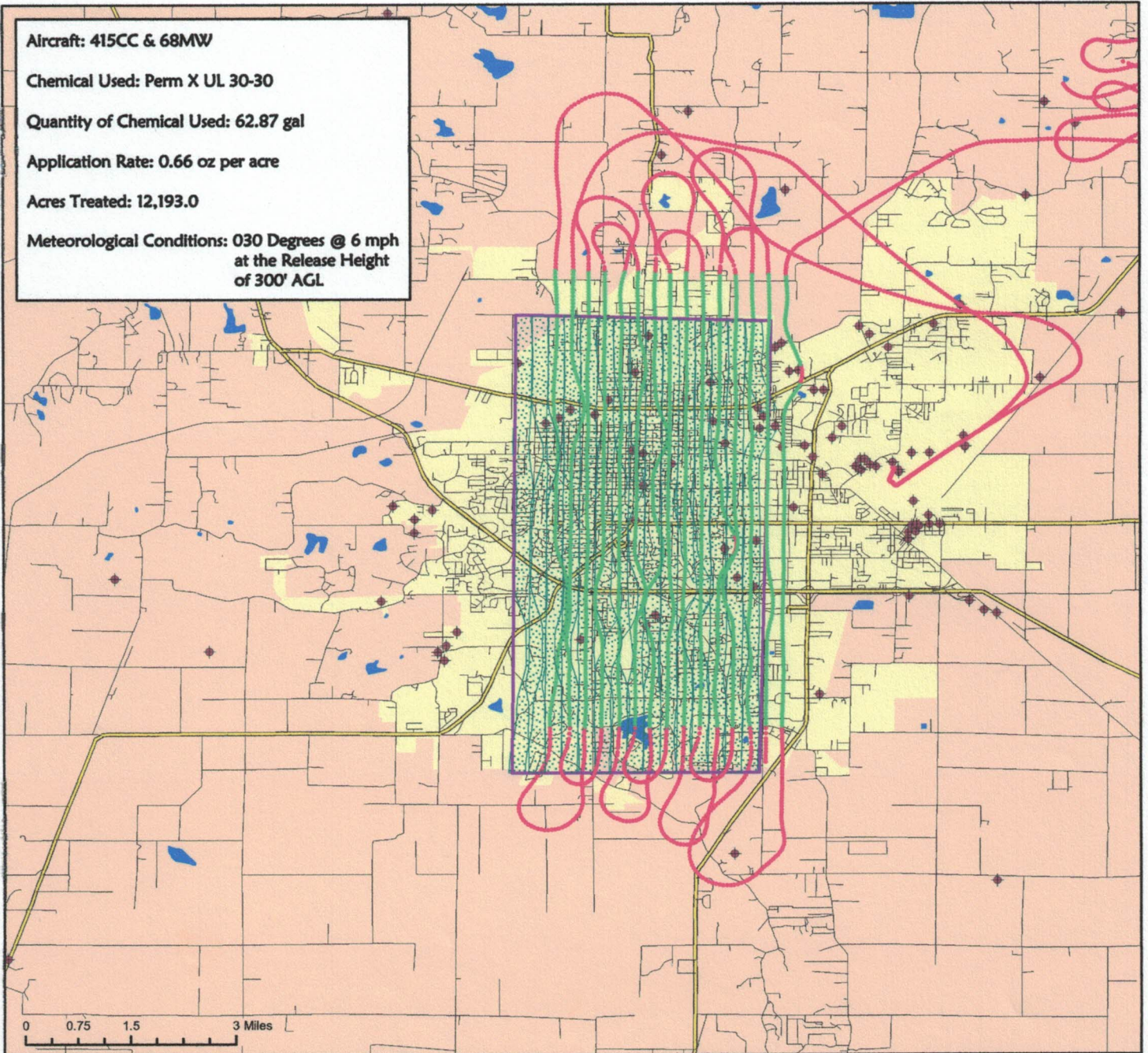
**Chemical Used: Perm X UL 30-30**

**Quantity of Chemical Used: 62.87 gal**

**Application Rate: 0.66 oz per acre**

**Acres Treated: 12,193.0**

**Meteorological Conditions: 030 Degrees @ 6 mph  
at the Release Height  
of 300' AGL**



0 0.75 1.5 3 Miles

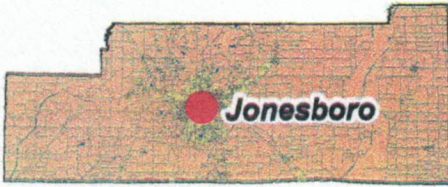


VDCI  
1320 Brookwood Dr., Suite H  
Little Rock, AR 72202

These map products were developed for use by VDCI for its internal purposes only and were not designed or intended for general use by members of the public. VDCI makes no representation or warranty as to its accuracy, timeliness, or completeness, and in particular, its accuracy in labeling or displaying dimensions, contours, property boundaries, or placement or location of any map features thereon. © 2021 VDCI. All rights reserved.



# Craighead County



# Jonesboro, Arkansas

Aerial Adulticide Application Date:  
August 17, 2021



**Flight Line**

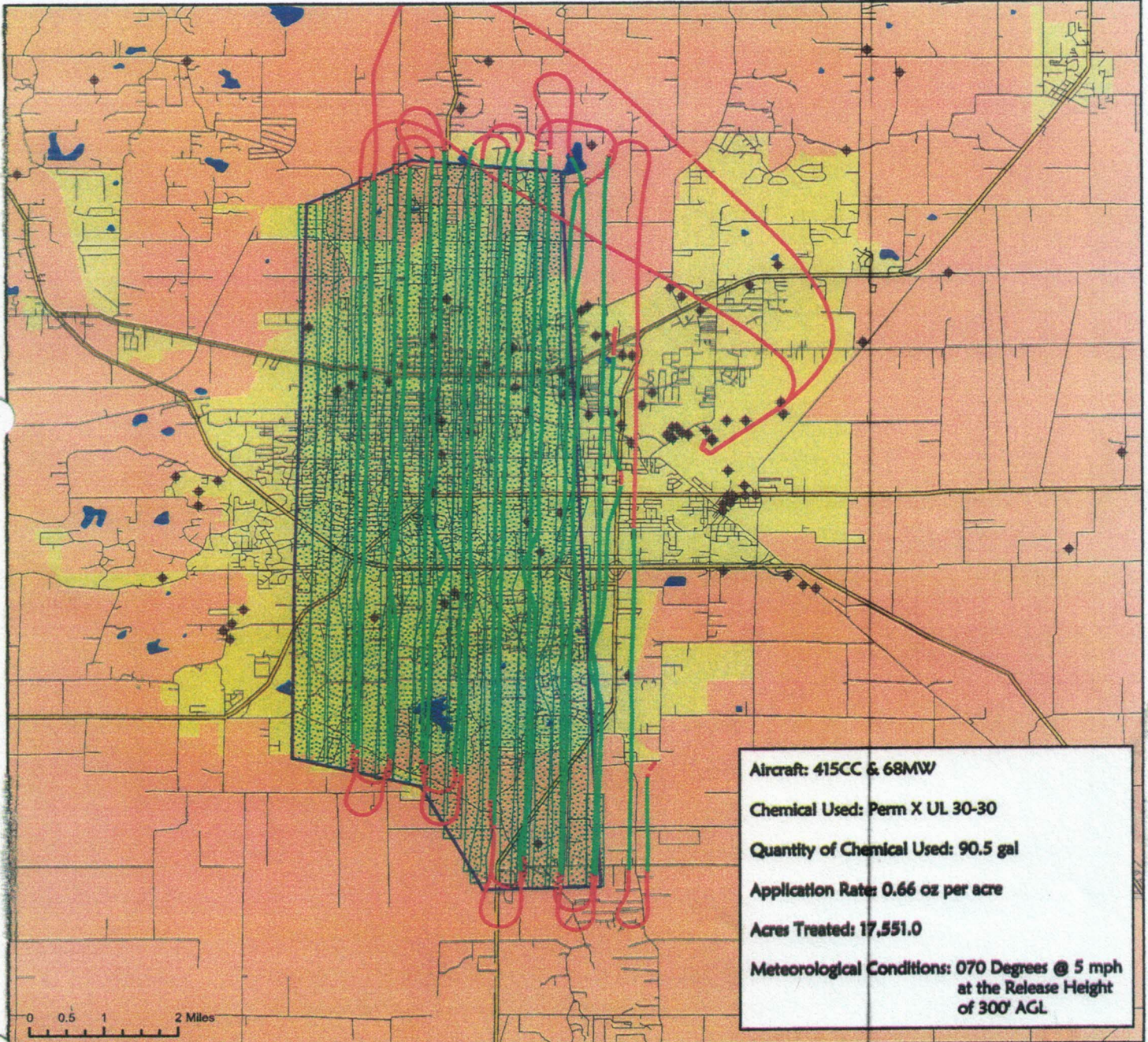
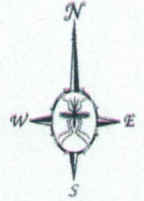
Spray Off

Spray On

Towers


Spray Deposition

Treatment Areas



**Aircraft: 415CC & 68MW**  
**Chemical Used: Perm X UL 30-30**  
**Quantity of Chemical Used: 90.5 gal**  
**Application Rate: 0.66 oz per acre**  
**Acres Treated: 17,551.0**  
**Meteorological Conditions: 070 Degrees @ 5 mph  
at the Release Height  
of 300' AGL**

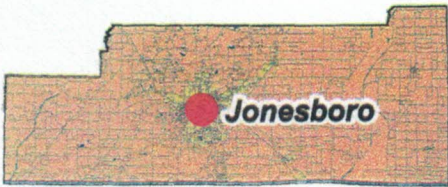
0 0.5 1 2 Miles

 VDCI  
1320 Brookwood Dr., Suite H  
Little Rock, AR 72202

These map products were developed for use by VDCI for its internal purposes only and were not designed or intended for general use by members of the public. VDCI makes no representation or warranty as to its accuracy, timeliness, or completeness, and in particular, its accuracy in labeling or displaying dimensions, contours, property boundaries, or placement or location of any map features thereon. © 2021 VDCI. All rights reserved.



# Craighead County



# Jonesboro, Arkansas

Aerial Adulticide Application Date:  
August 10, 2021



**Flight Line**

Spray Off

Spray On

Towers

Spray Deposition

Treatment Areas



Aircraft: 415CC & 68MW

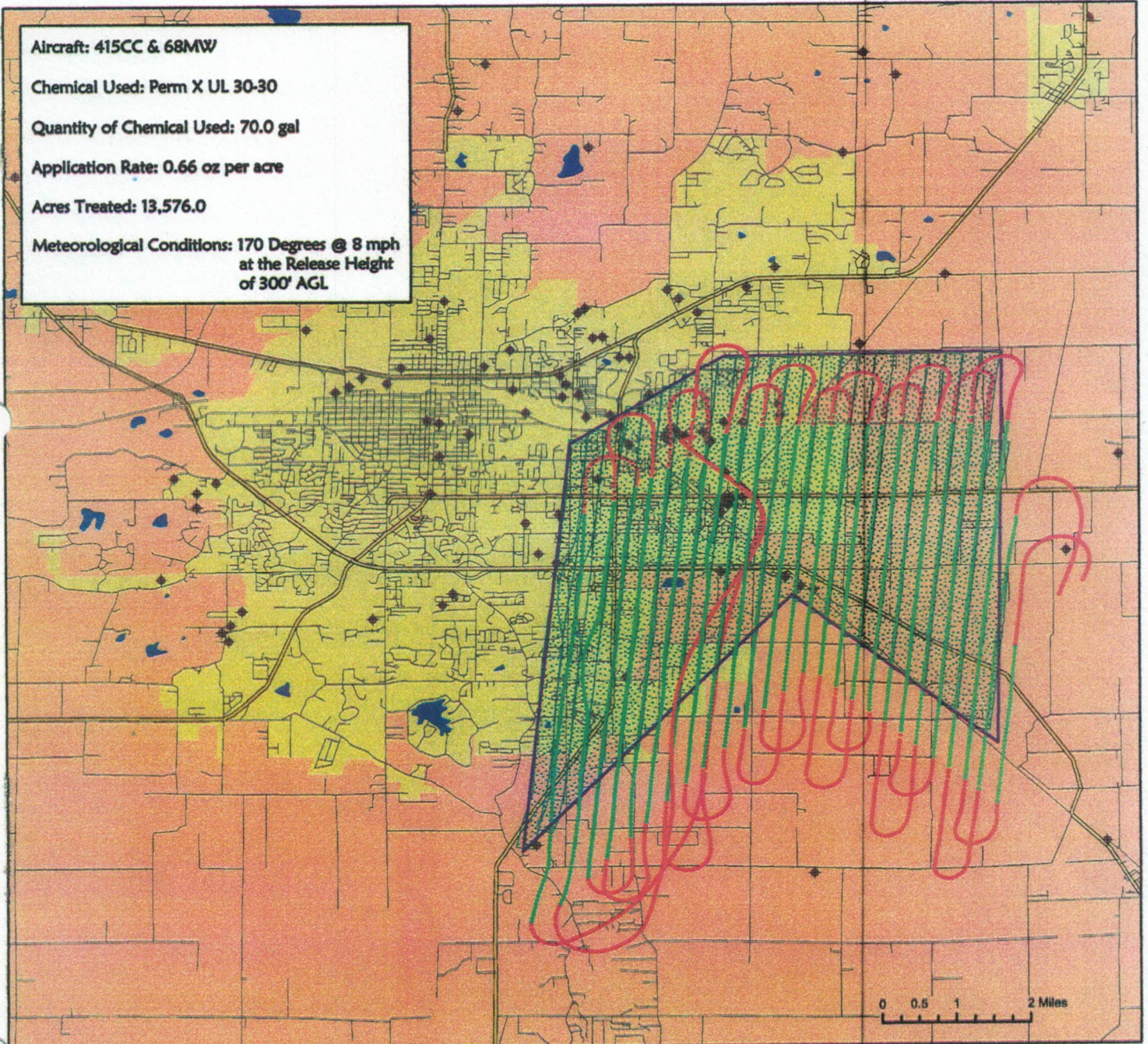
Chemical Used: Perm X UL 30-30

Quantity of Chemical Used: 70.0 gal

Application Rate: 0.66 oz per acre

Acres Treated: 13,576.0

Meteorological Conditions: 170 Degrees @ 8 mph  
at the Release Height  
of 300' AGL

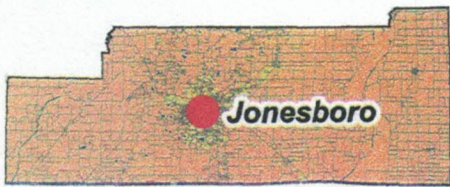


VDCI  
1320 Brookwood Dr., Suite H  
Little Rock, AR 72202

These map products were developed for use by VDCI for its internal purposes only and were not designed or intended for general use by members of the public. VDCI makes no representation or warranty as to its accuracy, timeliness, or completeness, and in particular, its accuracy in labeling or displaying dimensions, contours, property boundaries, or placement or location of any map features thereon. © 2021 VDCI. All rights reserved.



# Craighead County



# Jonesboro, Arkansas

Aerial Adulticide Application Date:  
August 3, 2021



**Flight Line**

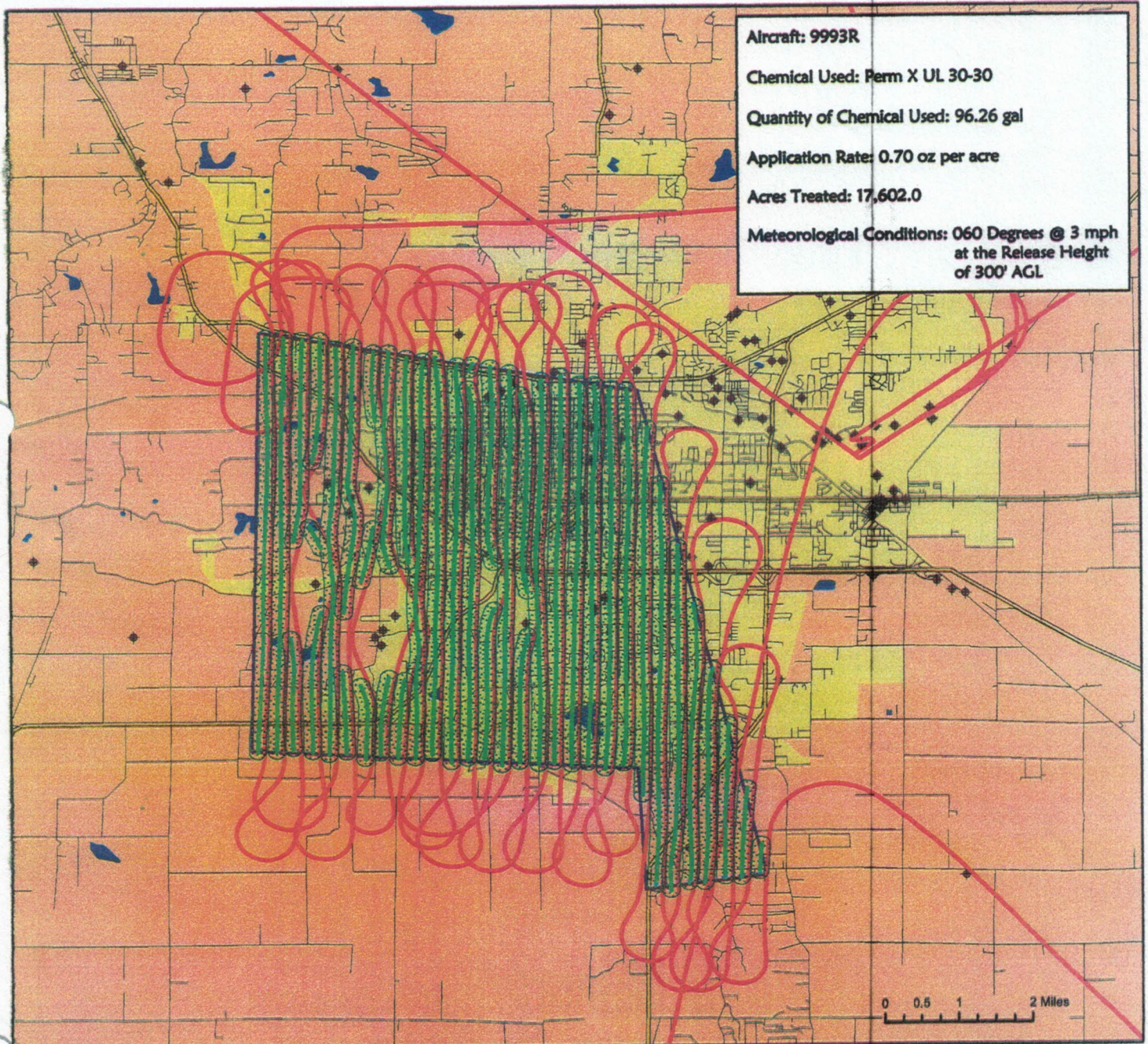
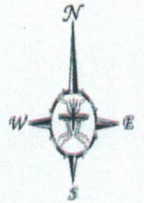
Spray Off

Spray On

Towers

Spray Deposition

Treatment Areas



**Aircraft:** 9993R  
**Chemical Used:** Perm X UL 30-30  
**Quantity of Chemical Used:** 96.26 gal  
**Application Rate:** 0.70 oz per acre  
**Acres Treated:** 17,602.0  
**Meteorological Conditions:** 060 Degrees @ 3 mph  
at the Release Height  
of 300' AGL

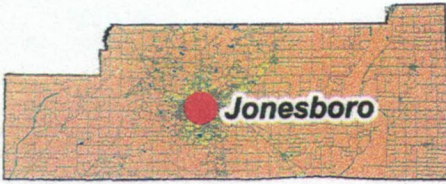


VDCI  
1320 Brookwood Dr., Suite H  
Little Rock, AR 72202

These map products were developed for use by VDCI for its internal purposes only and were not designed or intended for general use by members of the public. VDCI makes no representation or warranty as to its accuracy, timeliness, or completeness, and in particular, its accuracy in labeling or displaying dimensions, contours, property boundaries, or placement or location of any map features thereon. © 2021 VDCI. All rights reserved.



# Craighead County



# Jonesboro, Arkansas

Aerial Adulticide Application Date:  
August 25, 2021



**Flight Line**

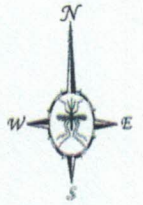
Spray Off

Spray On

Towers

Spray Deposition

Treatment Areas



Aircraft: 415CC & 68MW

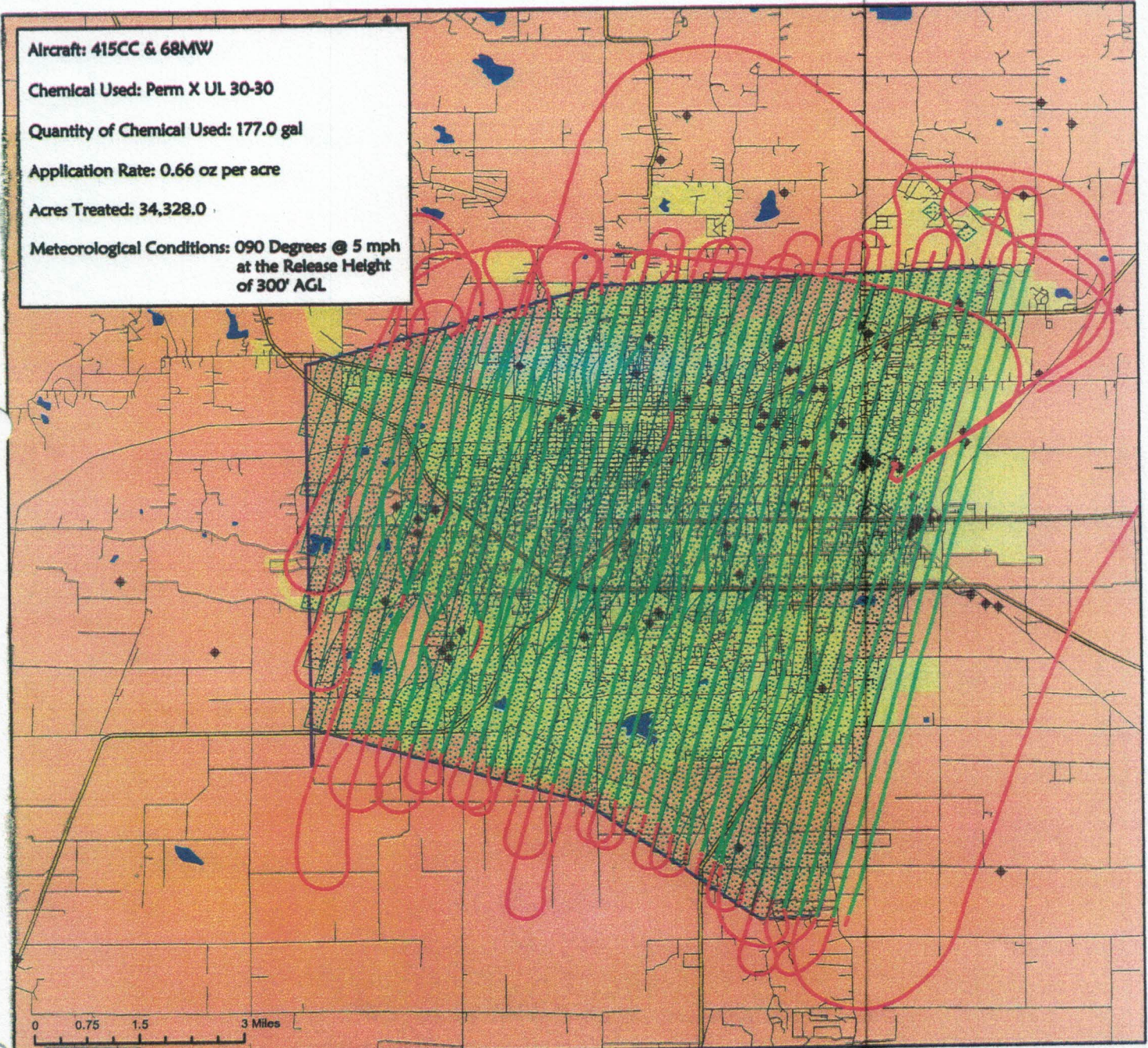
Chemical Used: Perm X UL 30-30

Quantity of Chemical Used: 177.0 gal

Application Rate: 0.66 oz per acre

Acres Treated: 34,328.0

Meteorological Conditions: 090 Degrees @ 5 mph  
at the Release Height  
of 300' AGL



0 0.75 1.5 3 Miles



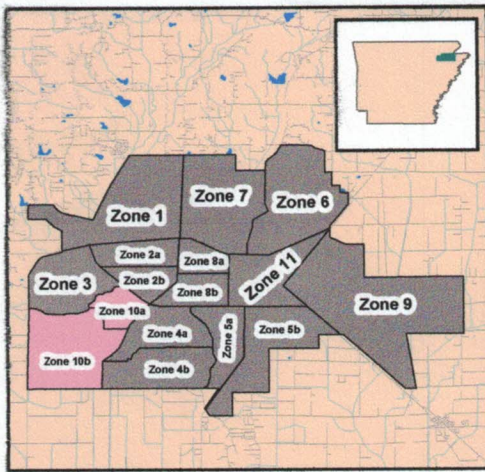
VDCI  
1320 Brookwood Dr., Suite H  
Little Rock, AR 72202

These map products were developed for use by VDCI for its internal purposes only and were not designed or intended for general use by members of the public. VDCI makes no representation or warranty as to its accuracy, timeliness, or completeness, and in particular, its accuracy in labeling or displaying dimensions, contours, property boundaries, or placement or location of any map features thereon. © 2021 VDCI. All rights reserved.



# Jonesboro, Arkansas

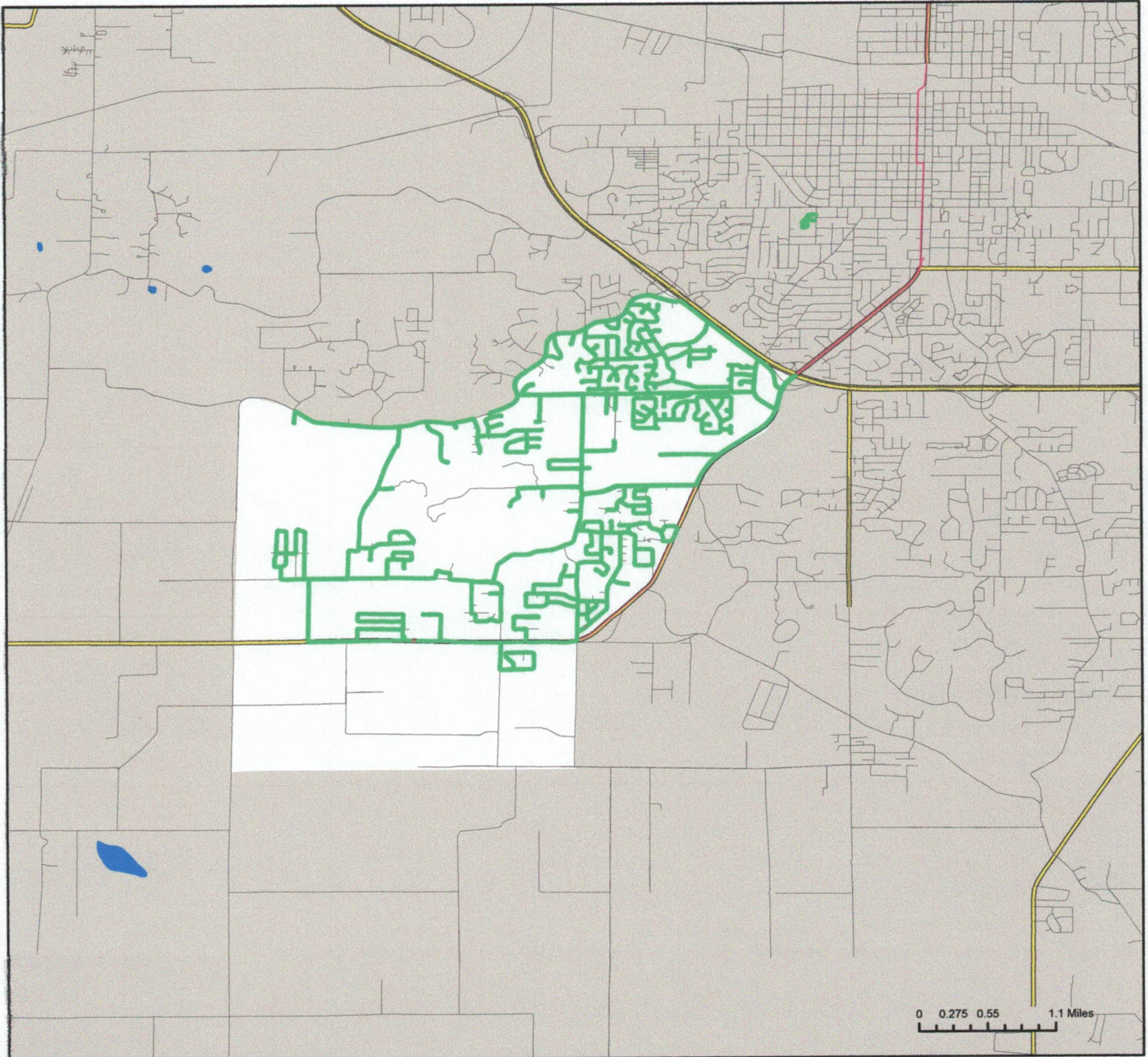
Ground Adulticide Application Date:  
August 2, 2021



## Sprayer Status

- Spray Off
- Spray On

Chemical: Perm-X UL 30-30  
Quantity Used: 31.9 gal  
Miles Treated: 85.9  
Acres Treated: 3,123.7



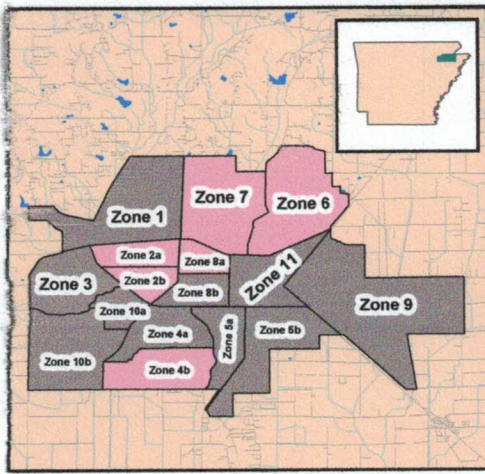
VDCI  
1320 Brookland Dr., Suite H  
Little Rock, AR 72202

These map products were developed for use by VDCI for its internal purposes only and were not designed or intended for general use by members of the public. VDCI makes no representation or warranty as to its accuracy, timeliness, or completeness, and in particular, its accuracy in labeling or displaying dimensions, contours, property boundaries, or placement or location of any map features thereon. © 2021 VDCI. All rights reserved.



# Jonesboro, Arkansas

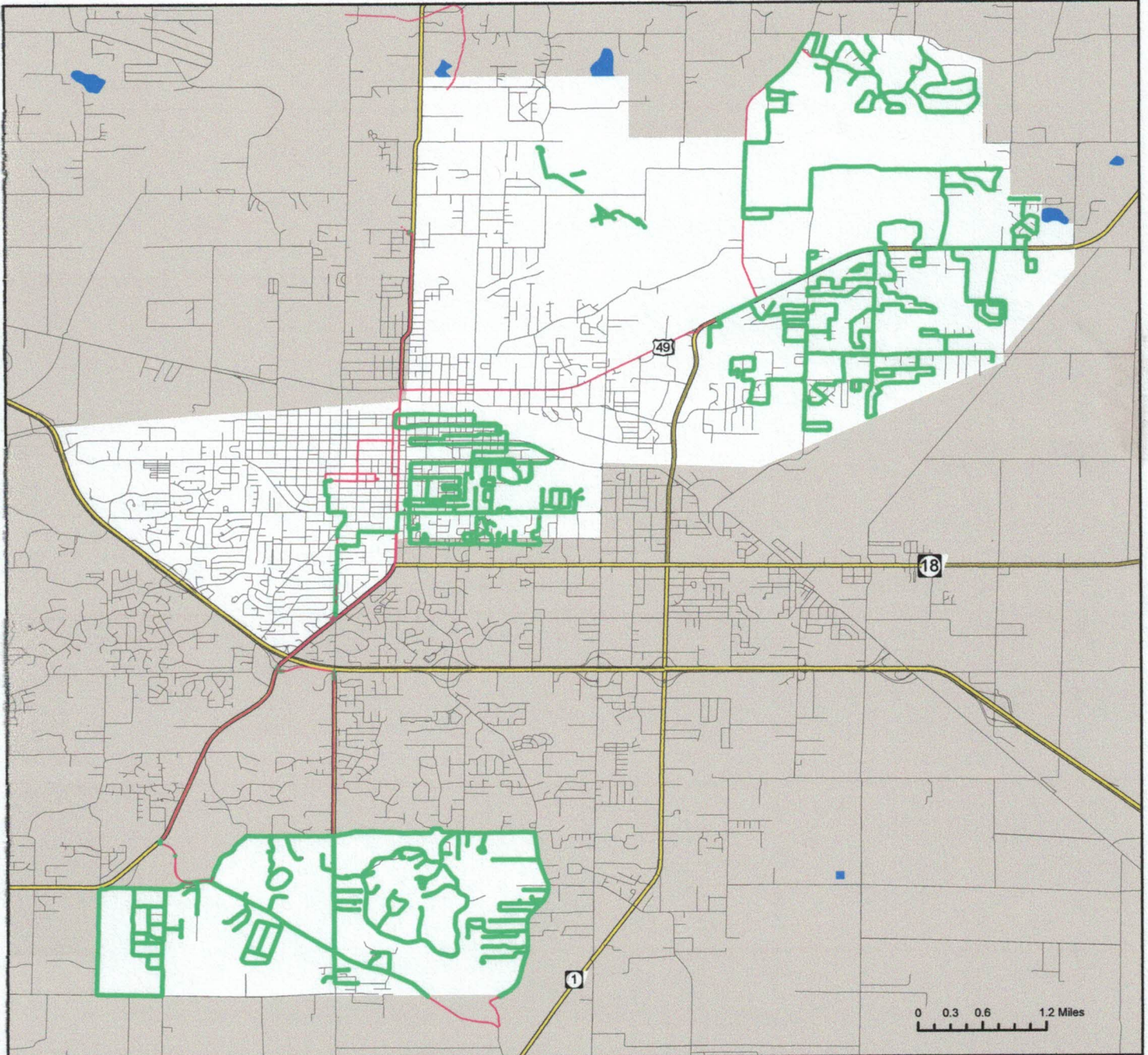
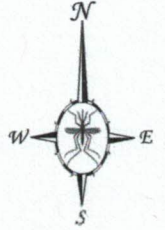
Ground Adulticide Application Date:  
August 6, 2021



## Sprayer Status

- Spray Off
- Spray On

Chemical: Perm-X UL 30-30  
Quantity Used: 60.2 gal  
Miles Treated: 141.1  
Acres Treated: 5,128.9



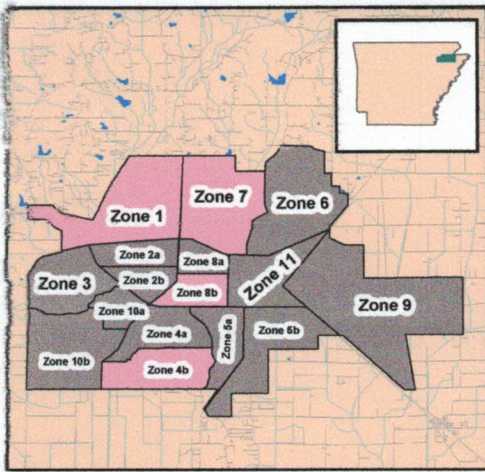
VDCI  
1320 Brookland Dr., Suite H  
Little Rock, AR 72202

These map products were developed for use by VDCI for its internal purposes only and were not designed or intended for general use by members of the public. VDCI makes no representation or warranty as to its accuracy, timeliness, or completeness, and in particular, its accuracy in labeling or displaying dimensions, contours, property boundaries, or placement or location of any map features thereon. © 2021 VDCI. All rights reserved.



# Jonesboro, Arkansas

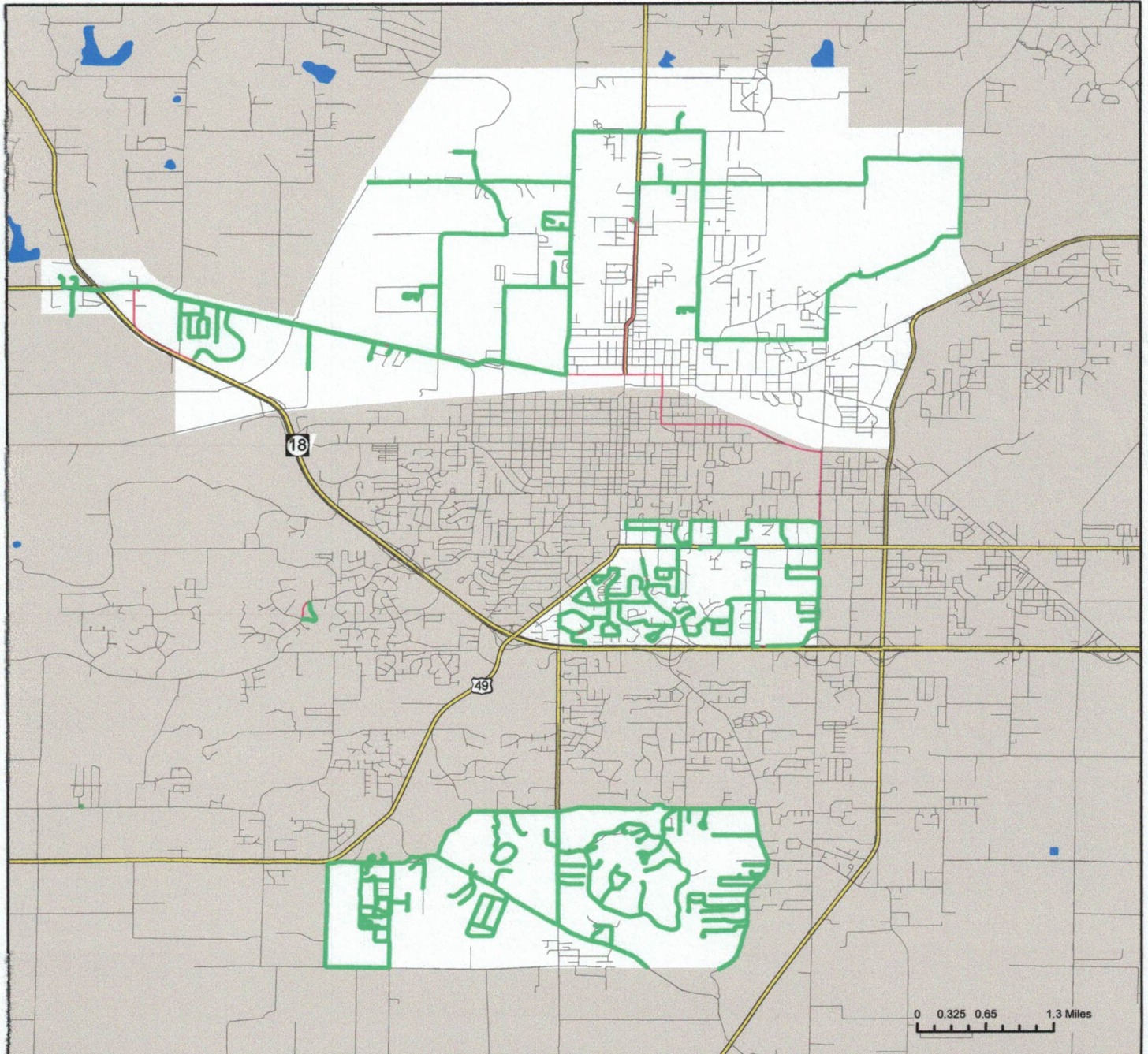
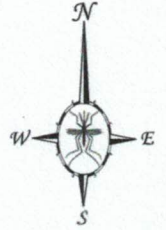
Ground Adulticide Application Date:  
August 20, 2021



## Sprayer Status

- Spray Off
- Spray On

Chemical: Perm-X UL 30-30  
Quantity Used: 50.1 gal  
Miles Treated: 107.2  
Acres Treated: 3,895.6



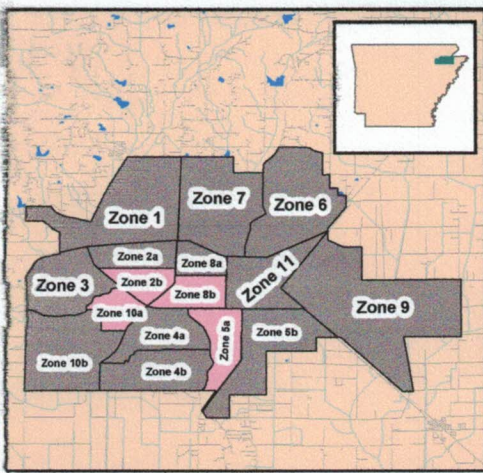
VDCI  
1320 Brookland Dr., Suite H  
Little Rock, AR 72202

These map products were developed for use by VDCI for its internal purposes only and were not designed or intended for general use by members of the public. VDCI makes no representation or warranty as to its accuracy, timeliness, or completeness, and in particular, its accuracy in labeling or displaying dimensions, contours, property boundaries, or placement or location of any map features thereon. © 2021 VDCI. All rights reserved.



# Jonesboro, Arkansas

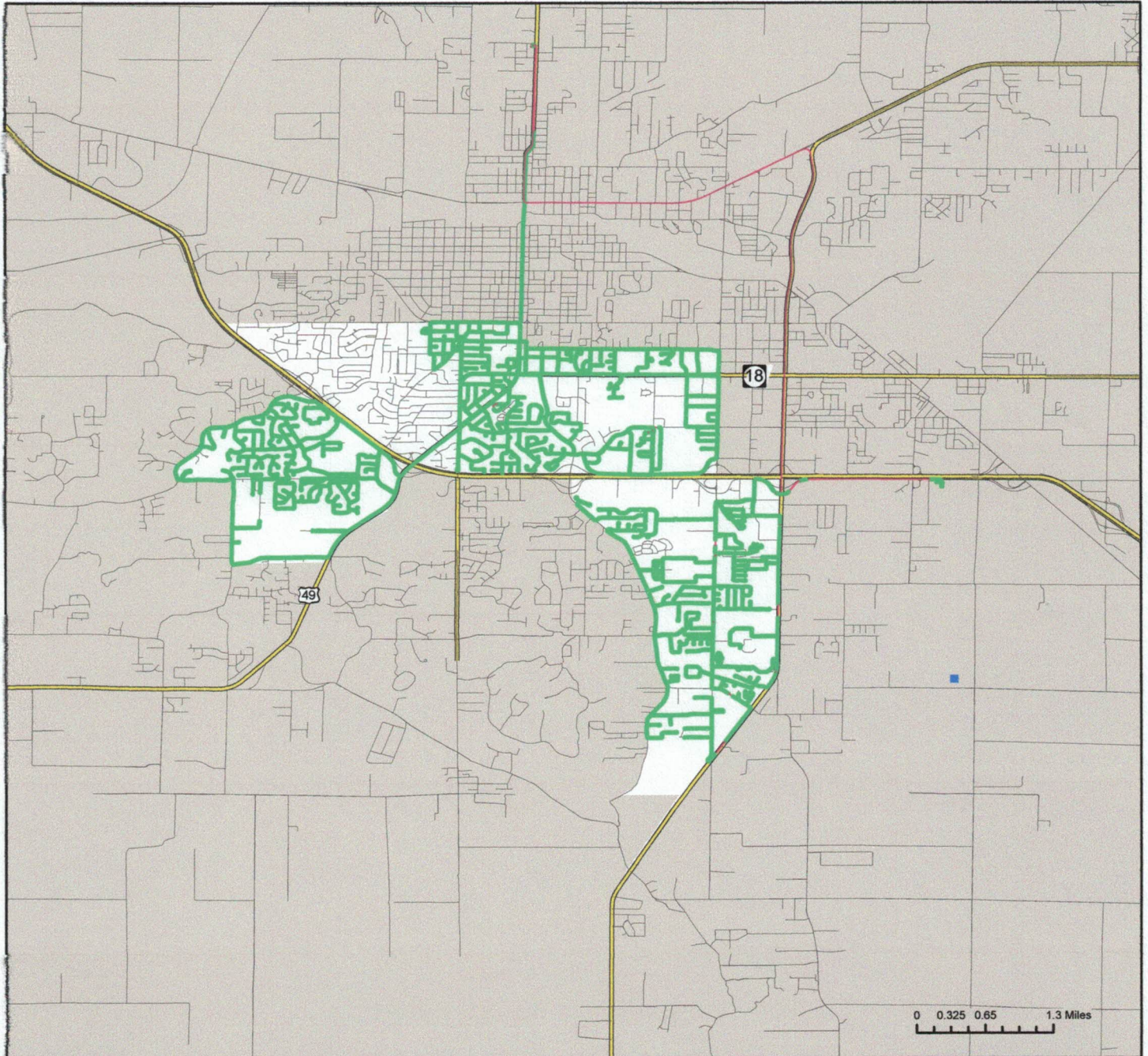
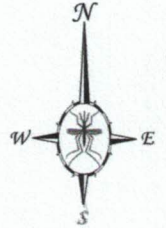
Ground Adulticide Application Date:  
August 26, 2021



## Sprayer Status

- Spray Off
- Spray On

Chemical: Perm-X UL 30-30  
Quantity Used: 50.4 gal  
Miles Treated: 128.4  
Acres Treated: 4,668.4



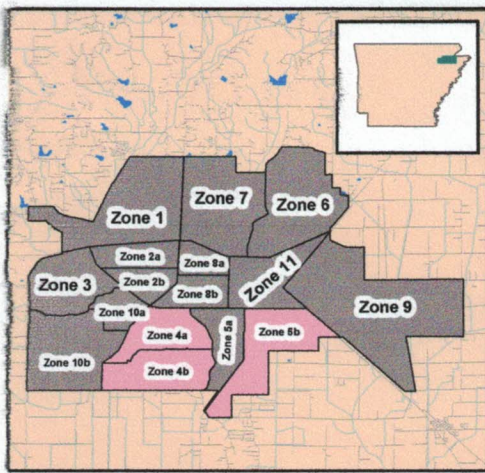
VDCI  
1320 Brookland Dr., Suite H  
Little Rock, AR 72202

These map products were developed for use by VDCI for its internal purposes only and were not designed or intended for general use by members of the public. VDCI makes no representation or warranty as to its accuracy, timeliness, or completeness, and in particular, its accuracy in labeling or displaying dimensions, contours, property boundaries, or placement or location of any map features thereon. © 2021 VDCI. All rights reserved.



# Jonesboro, Arkansas

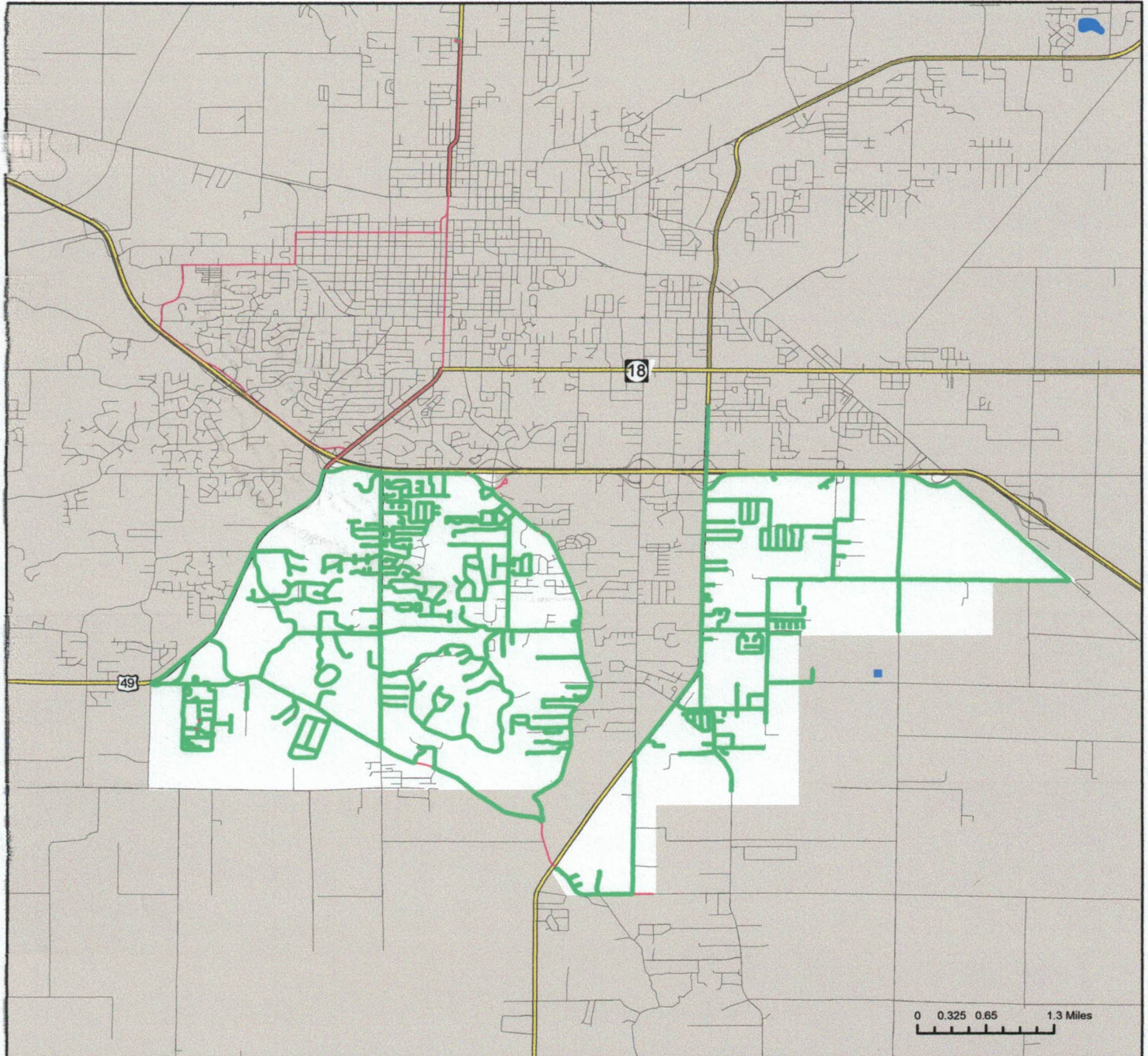
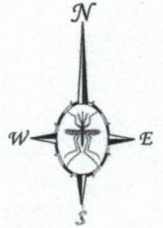
Ground Adulticide Application Date:  
August 27, 2021



## Sprayer Status

- Spray Off
- Spray On

Chemical: Perm-X UL 30-30  
Quantity Used: 51.7 gal  
Miles Treated: 137.9  
Acres Treated: 5,014.6



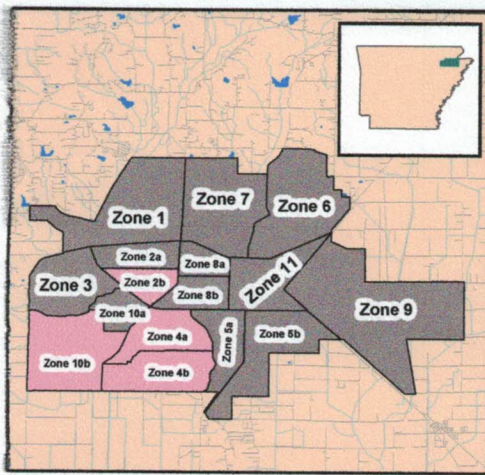
VDCI  
1320 Brookland Dr., Suite H  
Little Rock, AR 72202

These map products were developed for use by VDCI for its internal purposes only and were not designed or intended for general use by members of the public. VDCI makes no representation or warranty as to its accuracy, timeliness, or completeness, and in particular, its accuracy in labeling or displaying dimensions, contours, property boundaries, or placement or location of any map features thereon. © 2021 VDCI. All rights reserved.



# Jonesboro, Arkansas

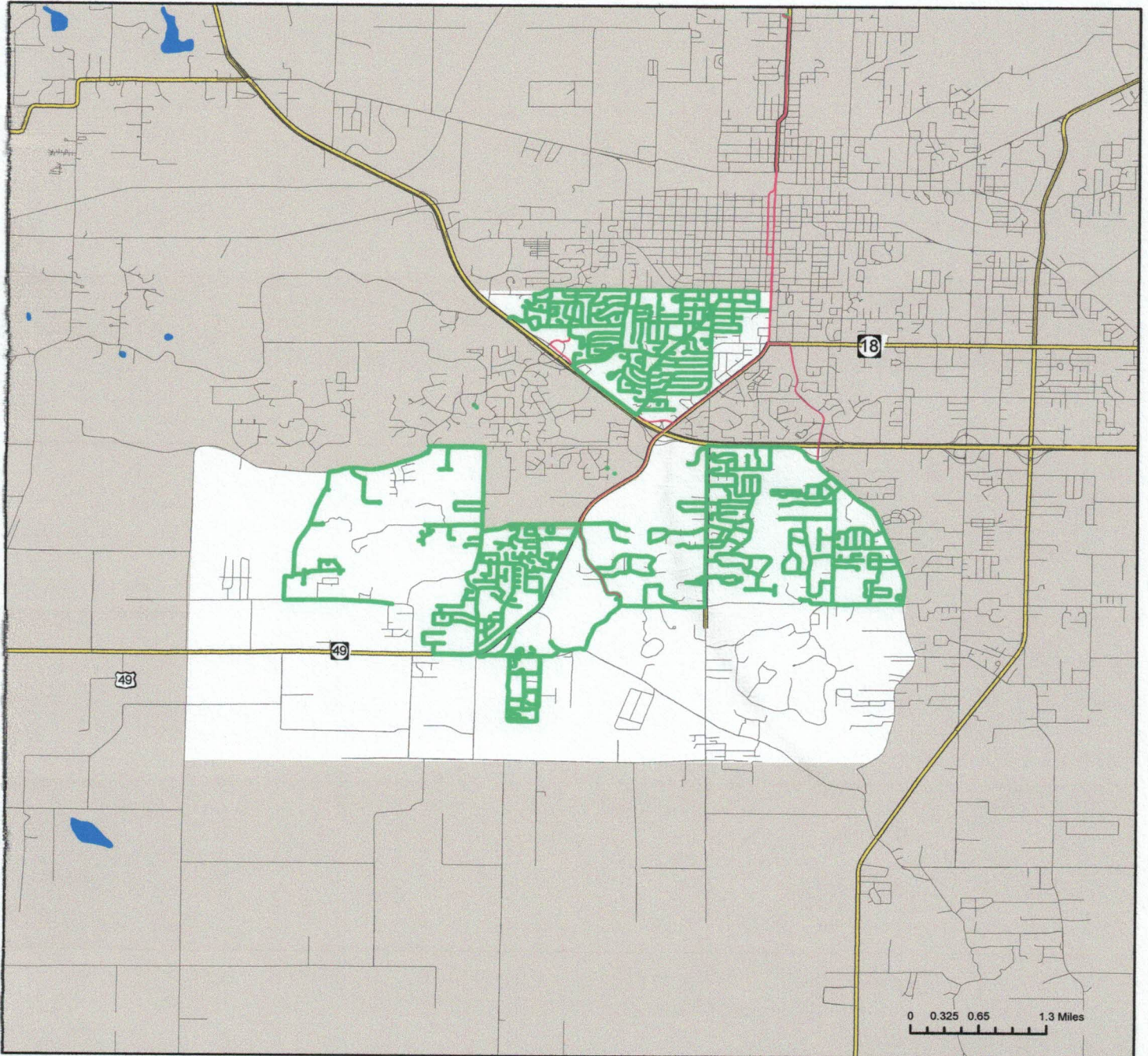
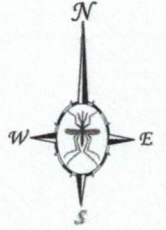
Ground Adulticide Application Date:  
August 31, 2021



## Sprayer Status

- Spray Off
- Spray On

Chemical: Perm-X UL 30-30  
Quantity Used: 53.6 gal  
Miles Treated: 126.7  
Acres Treated: 4,607.6



VDCI  
1320 Brookland Dr., Suite H  
Little Rock, AR 72202

These map products were developed for use by VDCI for its internal purposes only and were not designed or intended for general use by members of the public. VDCI makes no representation or warranty as to its accuracy, timeliness, or completeness, and in particular, its accuracy in labeling or displaying dimensions, contours, property boundaries, or placement or location of any map features thereon. © 2021 VDCI. All rights reserved.