

OVR



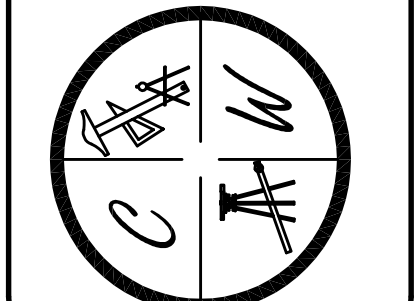
SANDCREEK ESTATES

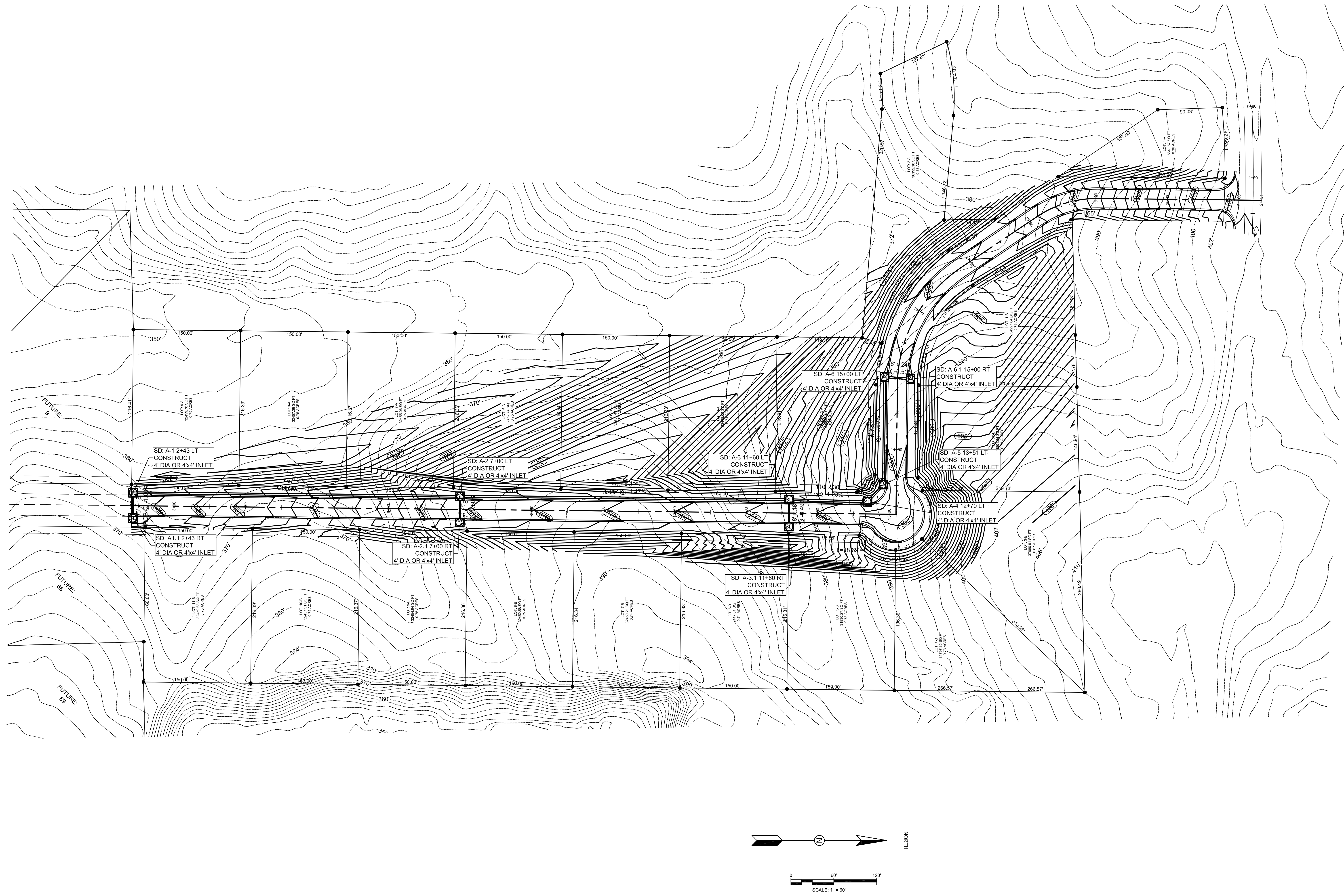
JONESBORO, AR

OVERALL MAP

DATE: 4/30/13
 REV:
 DRAWN BY: BGW

CARLOS WOOD, P.E.
 ENGINEERING CONSULTANT
 PMB 261
 2704-L S. CULBERHOUSE
 JONESBORO, AR 72401
 PHONE/FAX: (870) 972-8335
 EMAIL: WOODENGR@SBCGLOBAL.NET
 WEBSITE: WWW.WOODENGR.COM





STR-1



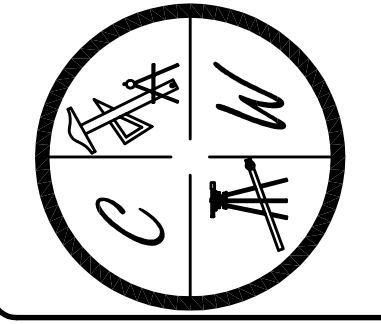
BUCKHEAD SOUTH PHASE I

JONESBORO, AR

TOPOGRAPHY &
DRAINAGE PLAN

DATE: 4/23/13
REV:
DRAWN BY: BCW

CARLOS WOOD, P.E.
ENGINEERING CONSULTANT
PMB 261
2704-L S. CULBERHOUSE
JONESBORO, AR 72401
PHONE/FAX: (870) 972-8335
EMAIL: WOODENR@SBGGLOBAL.NET
WEBSITE: WWW.WOODENR.COM





BUCKHEAD SOUTH PHASE I

JONESBORO, AR

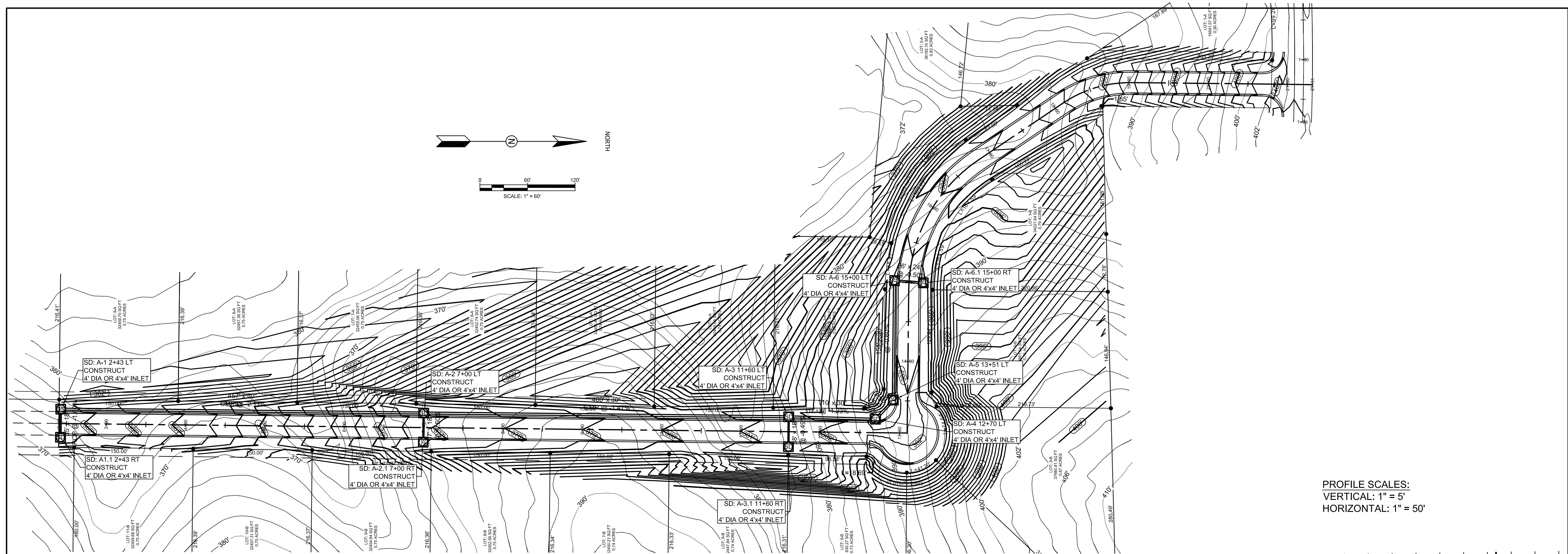
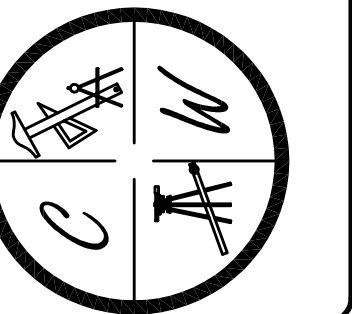
BUCKHEAD DR
PLAN & PROFILE

DATE: 4/23/13

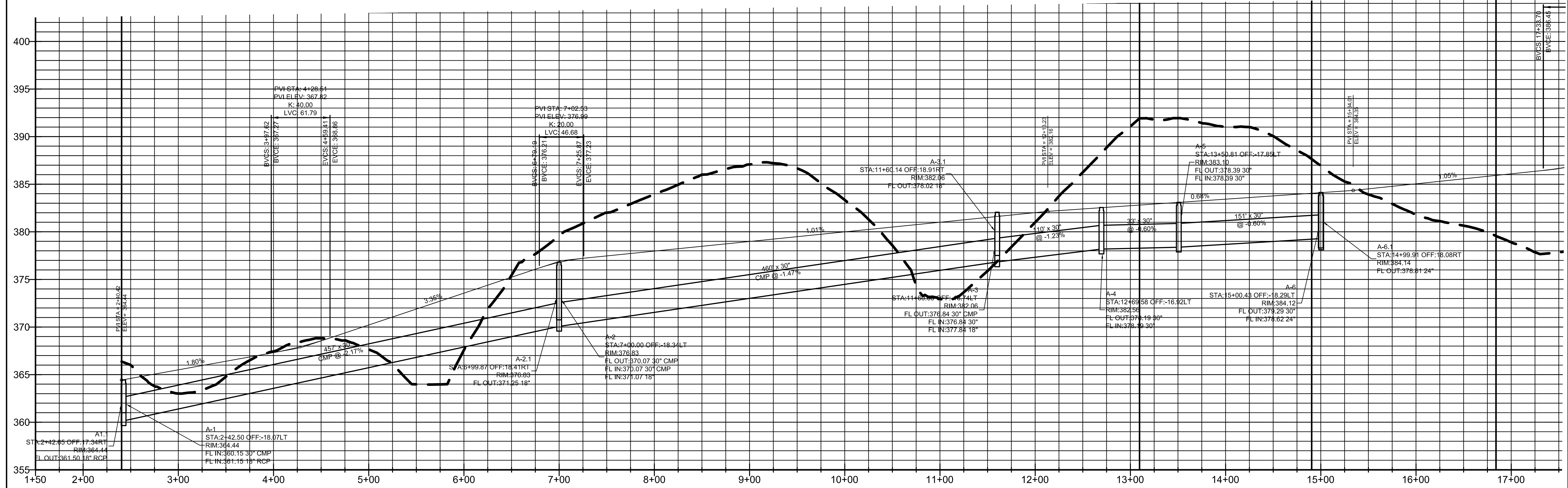
REV:

DRAWN BY: BCW

CARLOS WOOD, P.E.
ENGINEERING CONSULTANT
PMB 261
2704-L S. CULBERHOUSE
JONESBORO, AR 72401
PHONE/FAX: (870) 972-8335
EMAIL: WOODENR@SBCGLOBAL.NET
WEBSITE: WWW.WOODENR.COM



PROFILE SCALES:
VERTICAL: 1" = 5'
HORIZONTAL: 1" = 50'



363.01	365.609	367.43	367.310	367.64	370.214	367.59	373.560	379.59	376.797	383.92	377.976	387.08	378.988	383.35	379.995	372.95	381.011	381.01	382.022	391.08	382.750	391.03	383.435	396.93	384.119	381.83	385.046	378.00	386.097
--------	---------	--------	---------	--------	---------	--------	---------	--------	---------	--------	---------	--------	---------	--------	---------	--------	---------	--------	---------	--------	---------	--------	---------	--------	---------	--------	---------	--------	---------



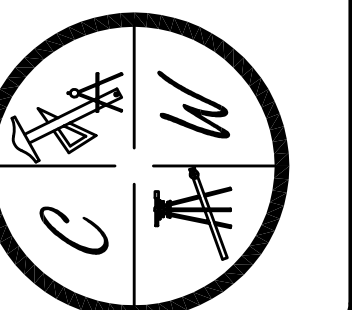
BUCKHEAD SOUTH PHASE I

JONESBORO, AR
 BUCKHEAD DR
 PLAN & PROFILE

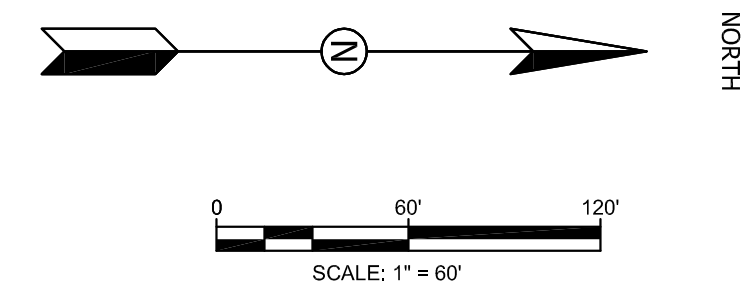
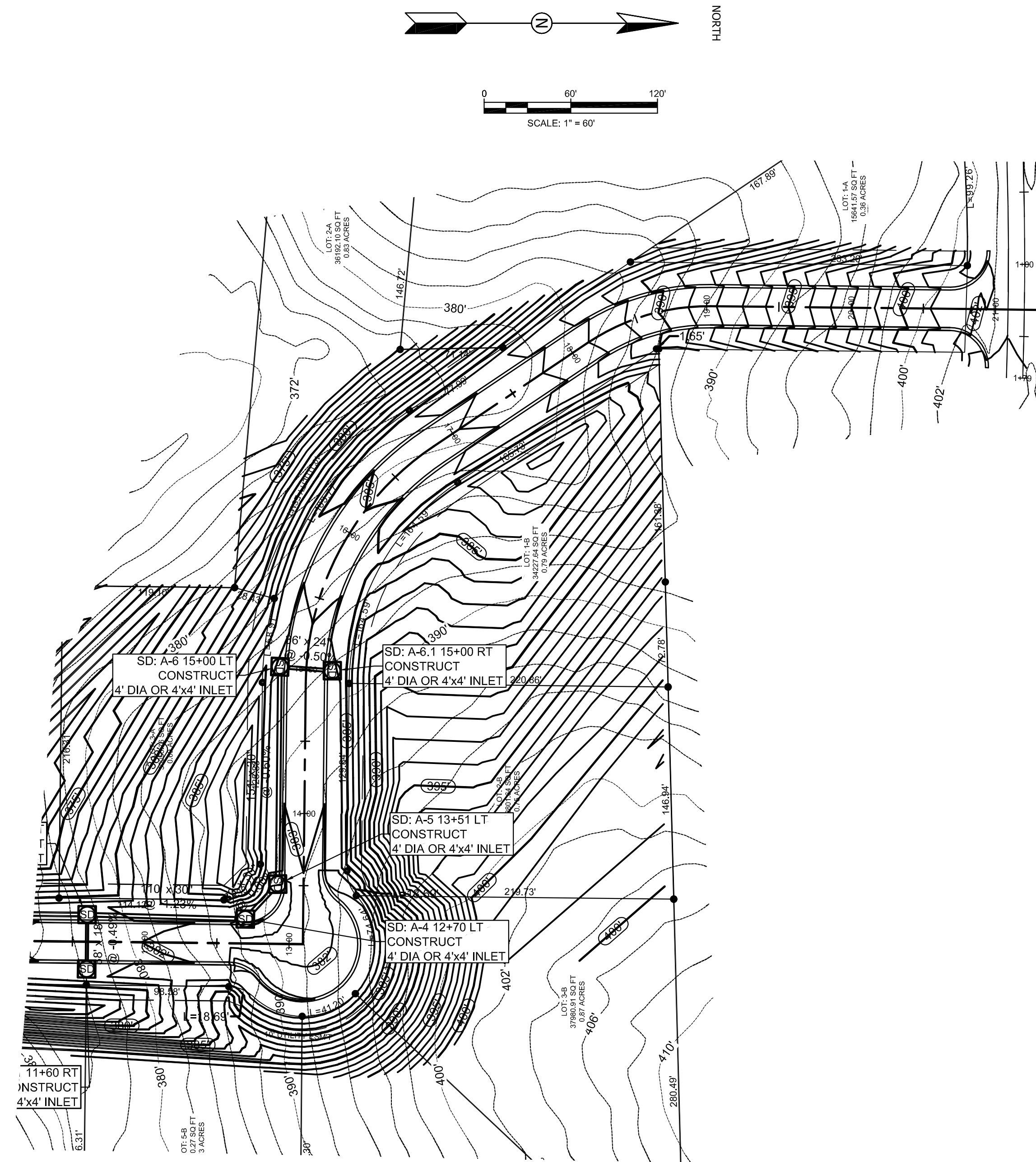
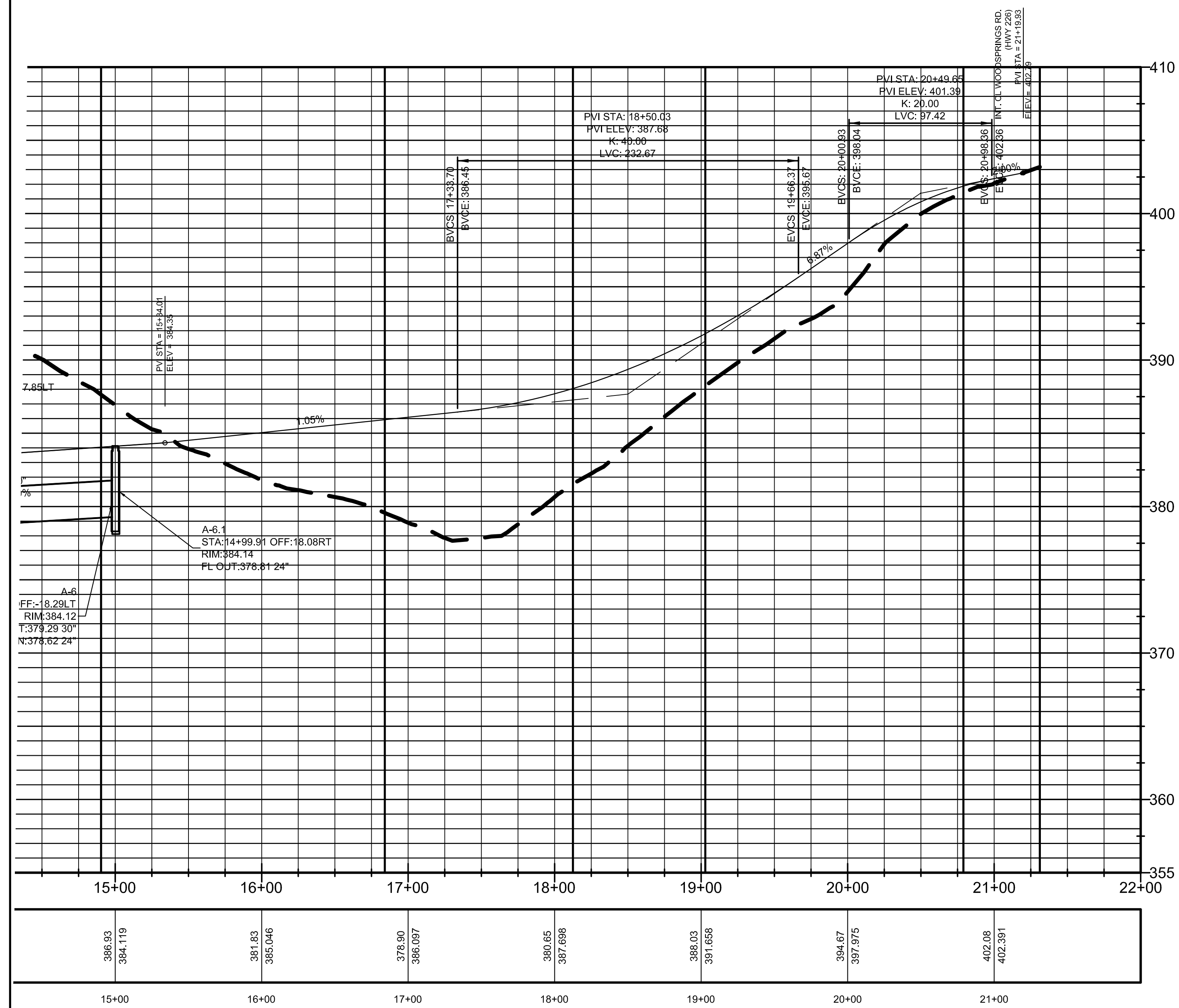
DATE: 4/23/13
 REV:

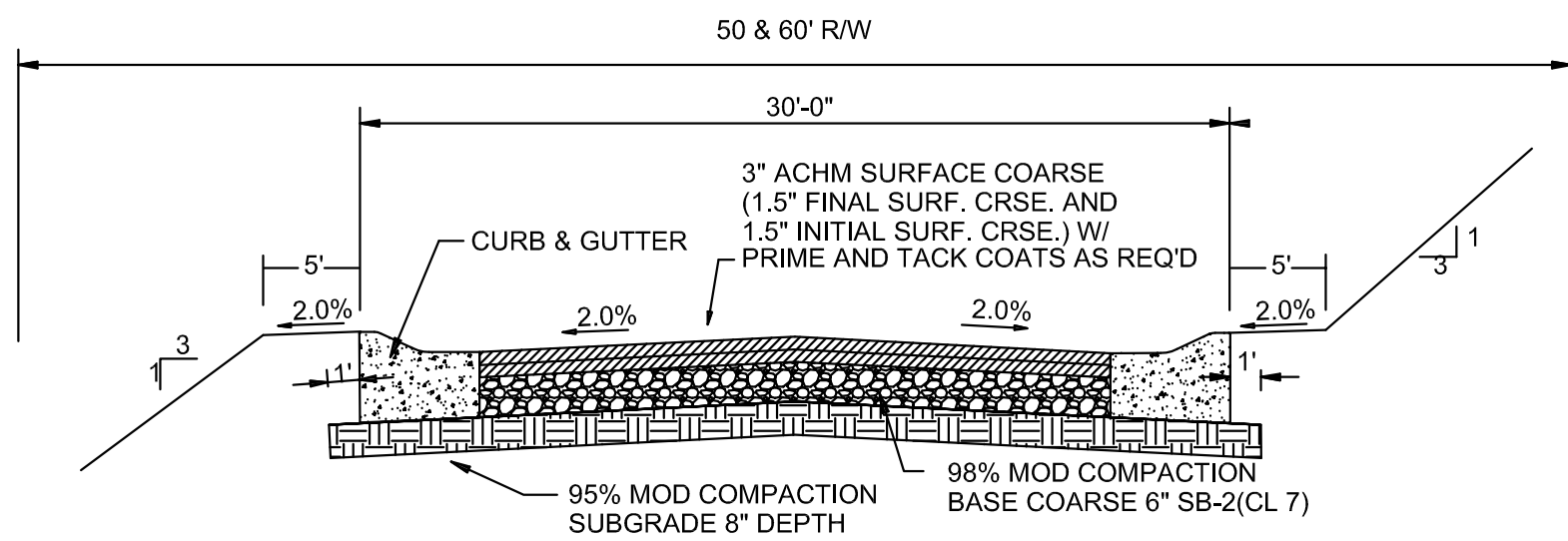
DRAWN BY: BCW

CARLOS WOOD, P.E.
 ENGINEERING CONSULTANT
 PMB 261
 2704-L S. CULBERHOUSE
 JONESBORO, AR 72401
 PHONE/FAX: (870) 972-8335
 EMAIL: WOODENR@SBGGLOBAL.NET
 WEBSITE: WWW.WOODENR.COM



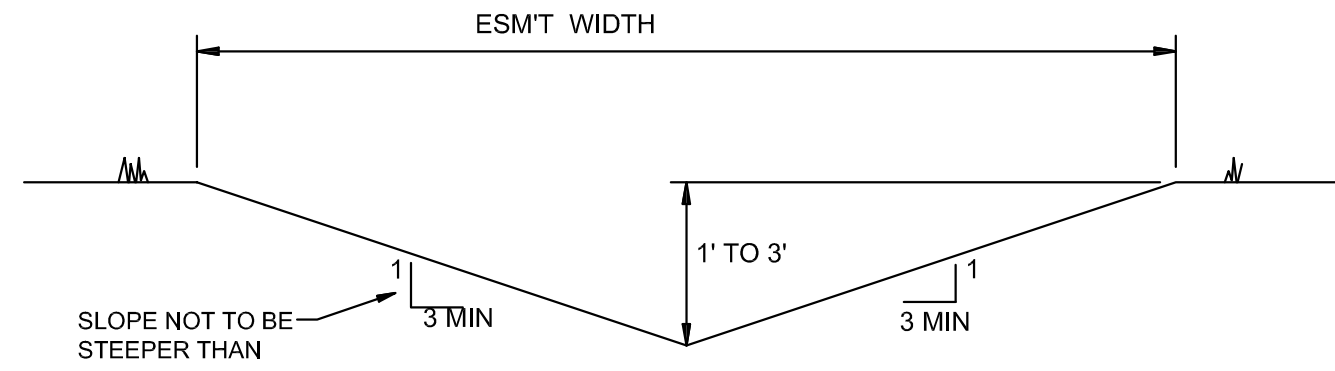
PROFILE SCALES:
 VERTICAL: 1" = 5'
 HORIZONTAL: 1" = 50'





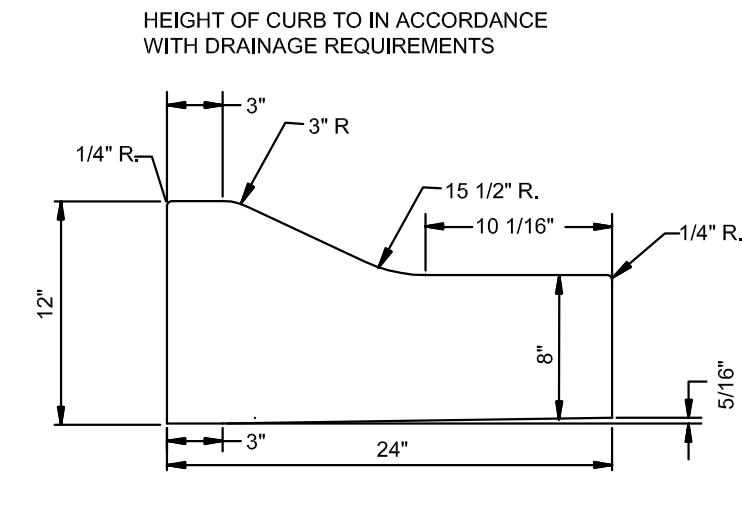
TYPICAL SECTION - INTERIOR STREETS

N.T.S.



'A' TYPICAL DITCH DETAIL

N.T.S.

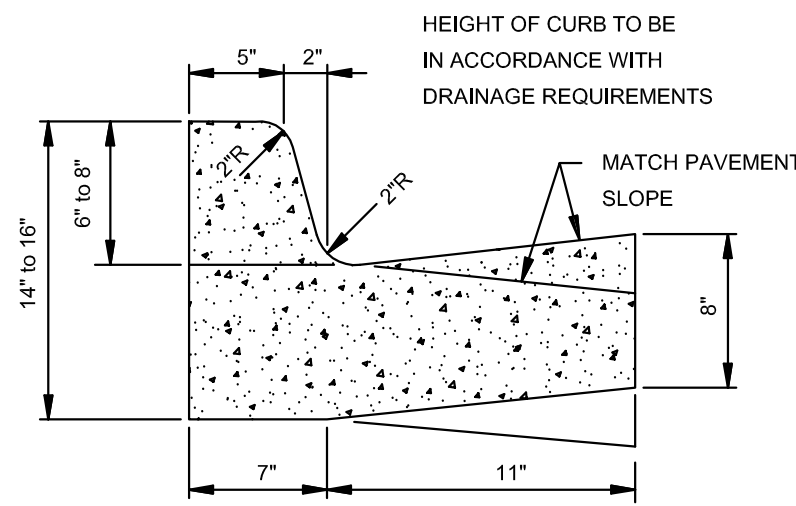


TYPE 'B' CURB & GUTTER

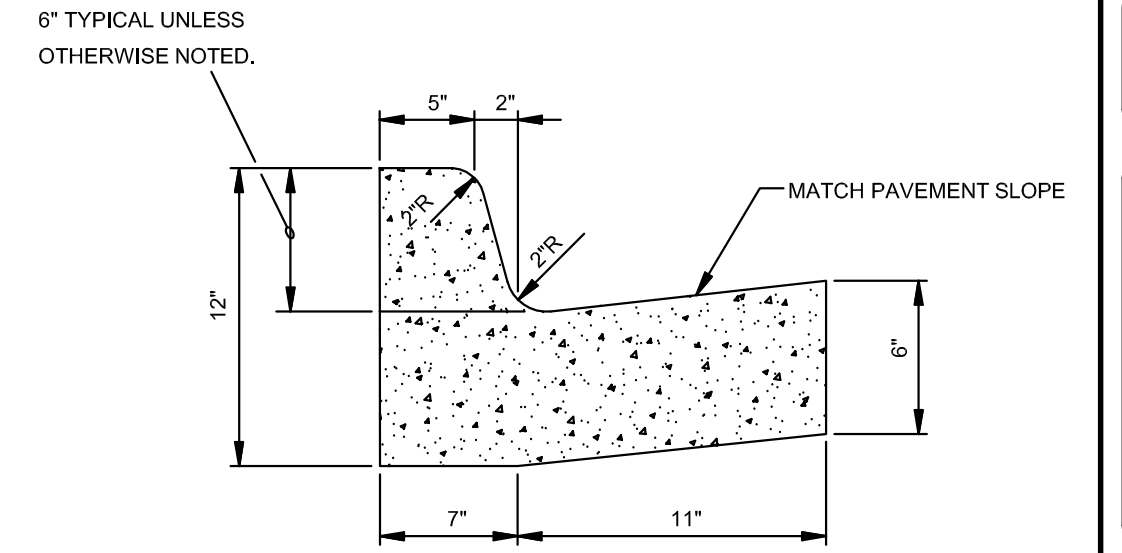
N.T.S.

NOTE: CONTRACTION AND EXPANSION JOINTS SHALL BE CONSTRUCTED IN ACCORDANCE WITH THE CITY OF JONESBORO SPECIFICATIONS

NO DRIVEWAY CUTS ALLOWED WITH THIS TYPE OF CURB



TYPE 'A-18' (BARRIER) ARTERIAL STREETS

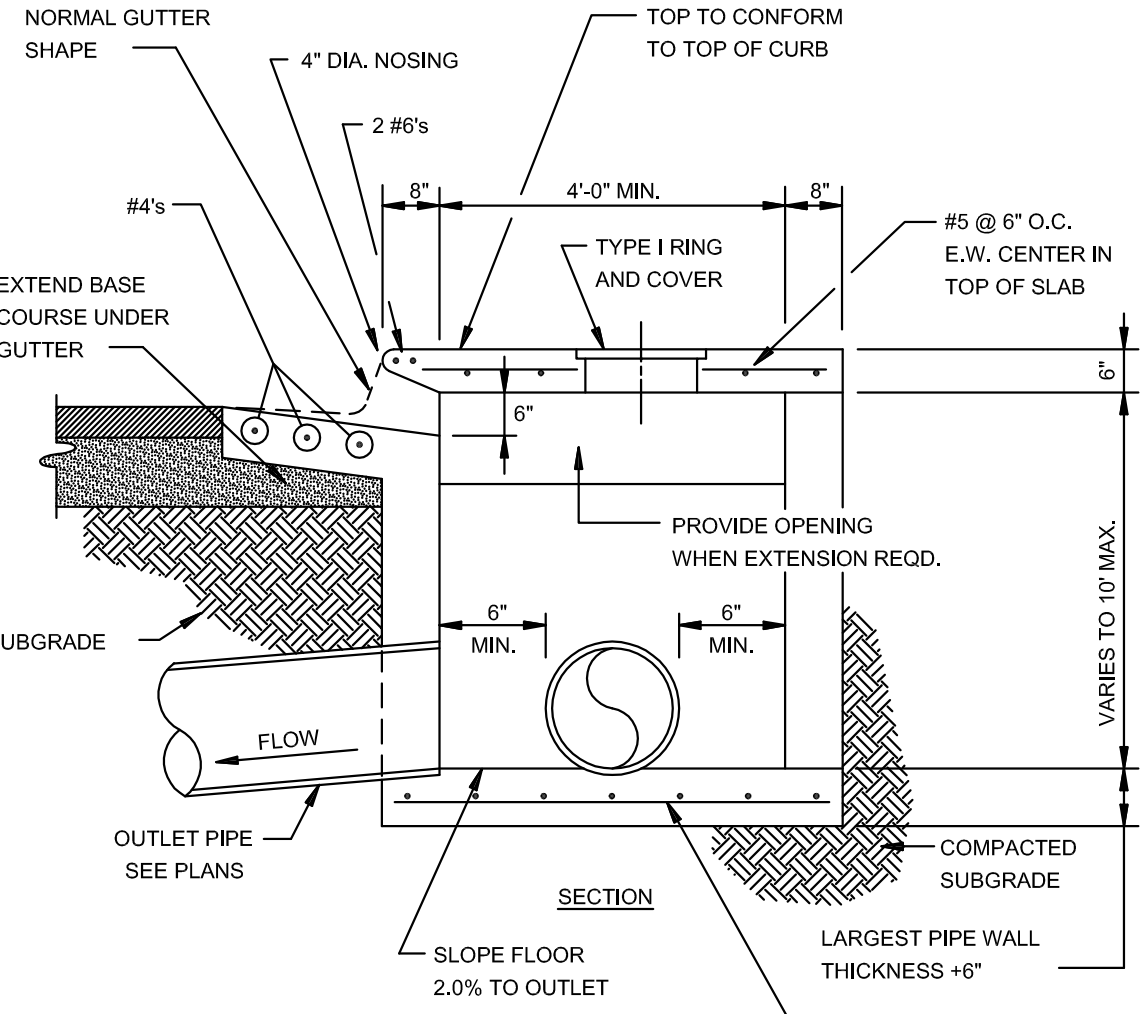


TYPE 'A-18' (BARRIER) RESIDENTIAL & COLLECTOR STREETS

COMBINATION CURB & GUTTER

N.T.S.

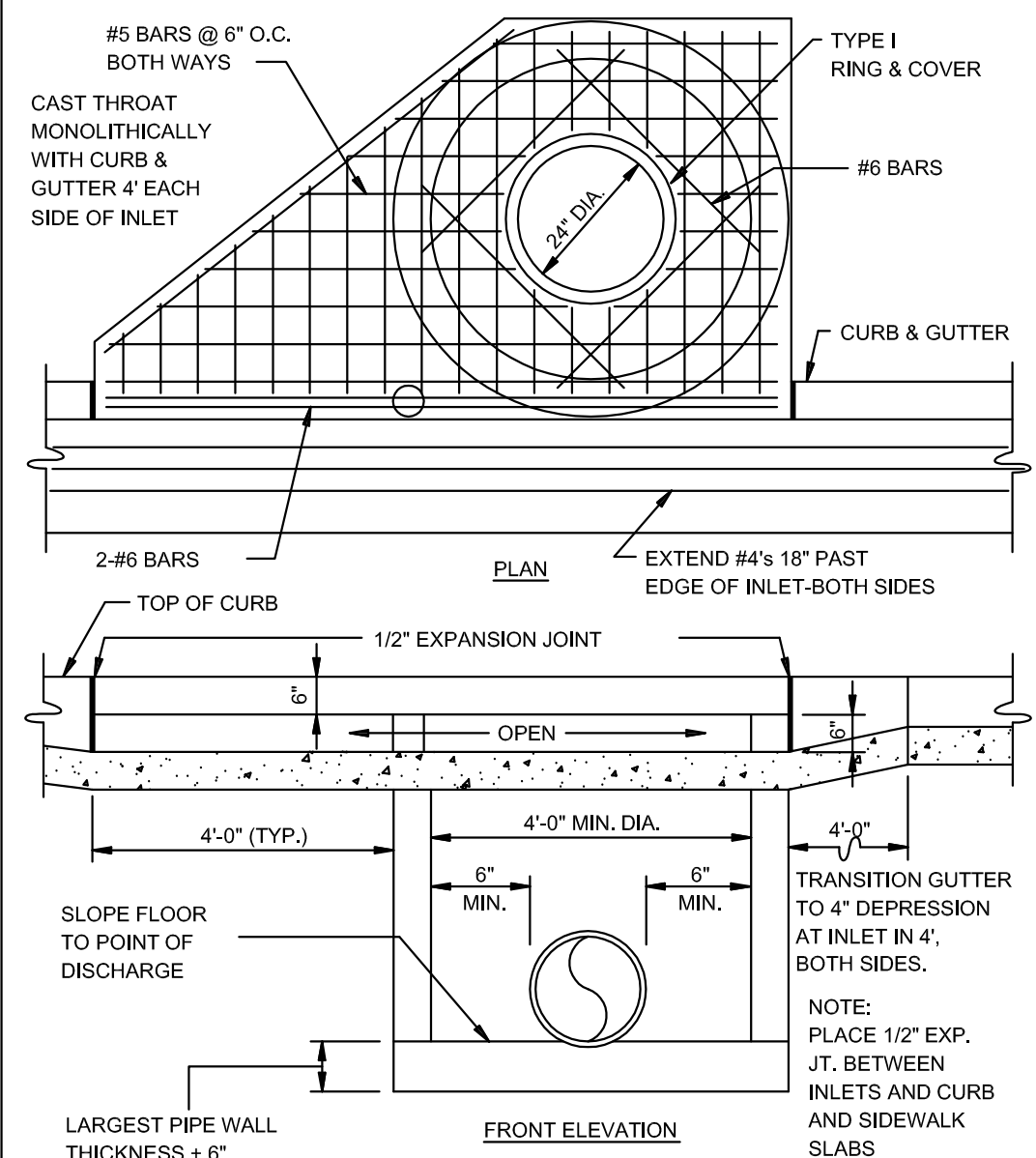
NOTE: CONTRACTION AND EXPANSION JOINTS SHALL BE CONSTRUCTED IN ACCORDANCE WITH THE PLANS AND SPECIFICATIONS.



SECTION - CIRCULAR CURB INLET

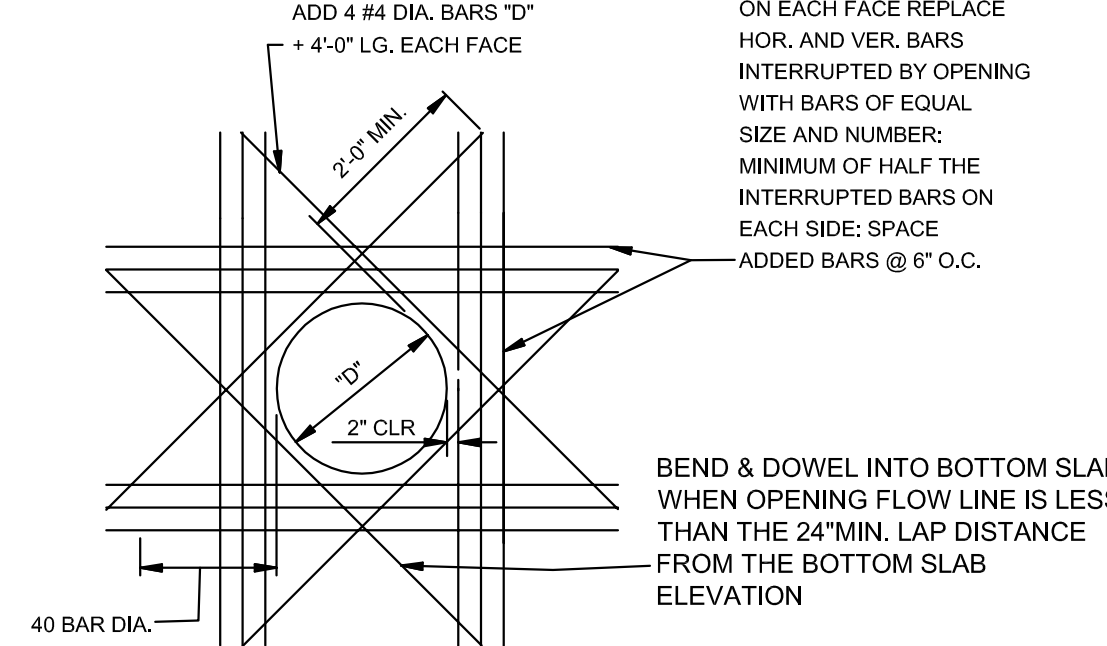
N.T.S.

NOTE: INLETS MORE THAN 3'-0" DEEP SHALL HAVE STANDARD MANHOLE STEPS PLACED AT 15" O.C. - MANHOLE FRAME AND COVER SHALL BE PLACED ADJACENT TO THE WALL WITH THE STEPS.



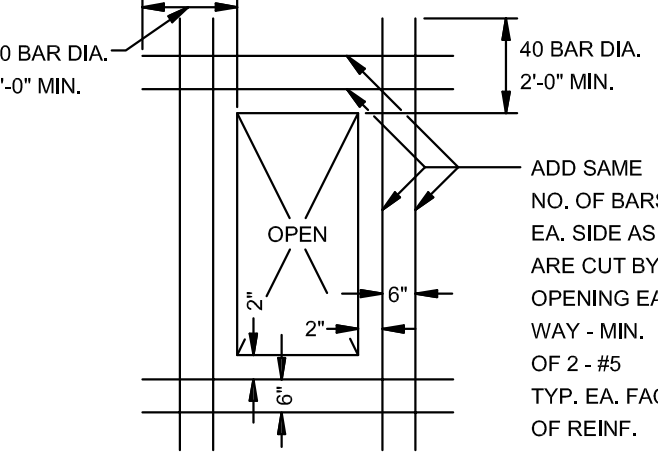
CIRCULAR CURB INLET W/ INLET EXTENSION

N.T.S.



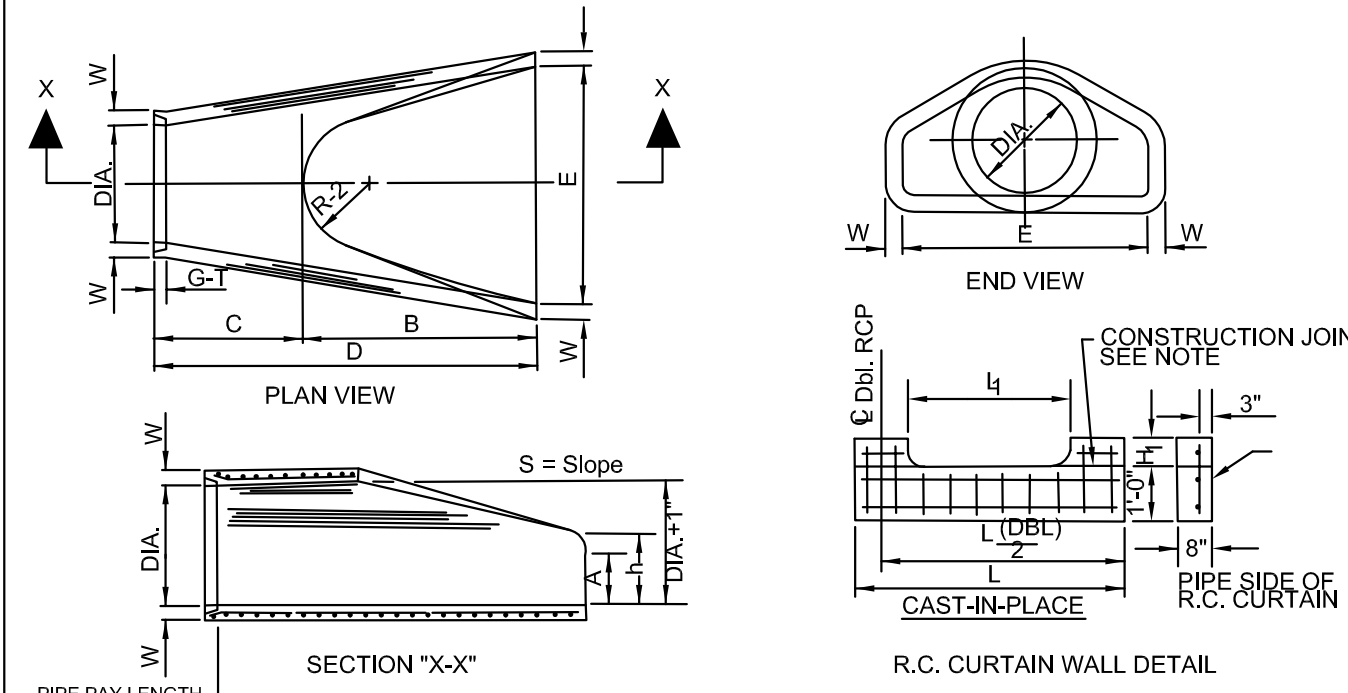
ADDED REINFORCEMENT AT ROUND OPENING IN WALL OR SLAB

N.T.S.



ADDED REINFORCEMENT AT RECTANGULAR OPENING IN WALL OR SLAB

N.T.S.

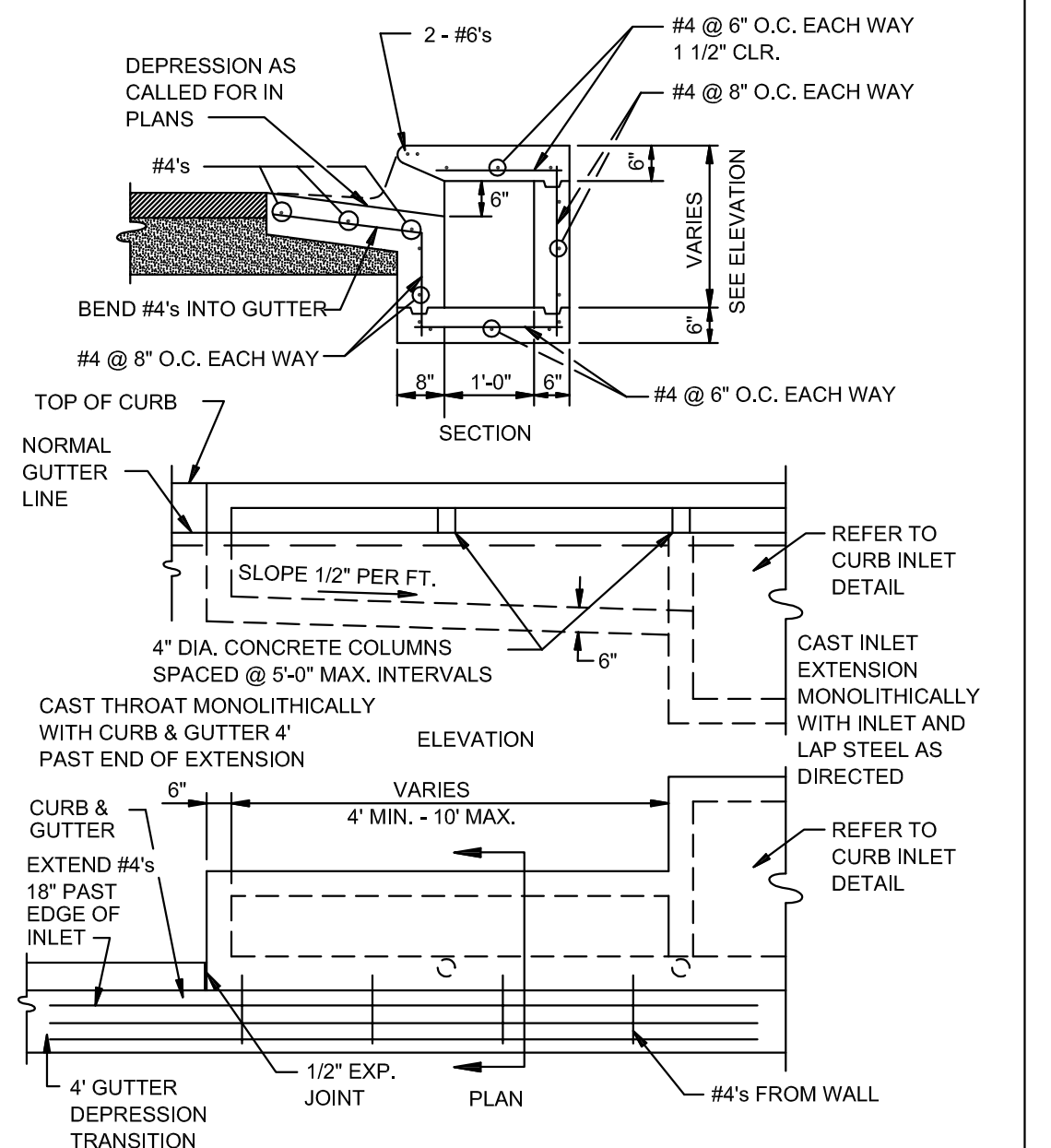


FLARED END SECTION DETAIL FOR REINFORCED CONCRETE PIPE CULVERT

N.T.S.

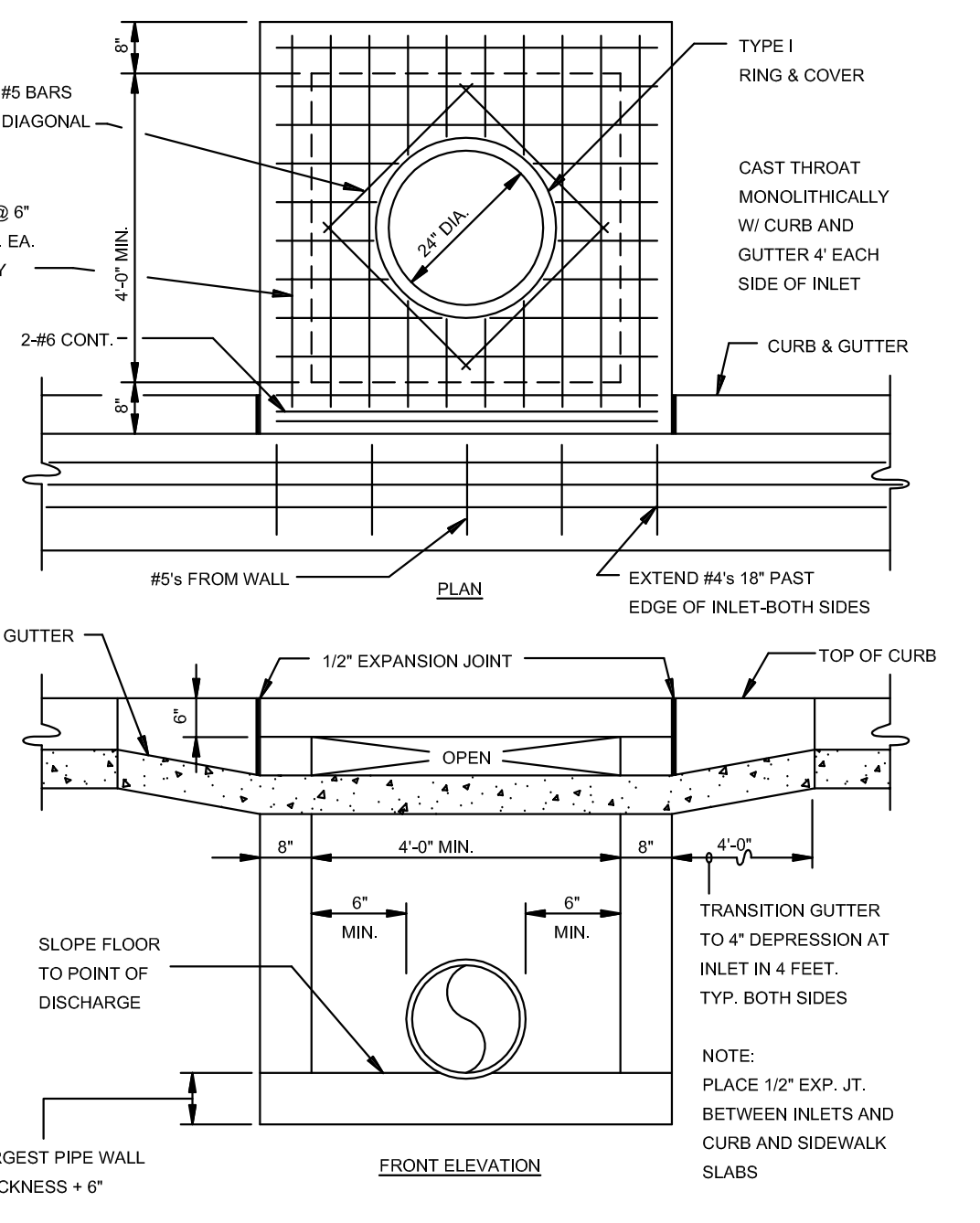
PIPE PAY LENGTH		TABLE OF DIMENSIONS												
DIA.	WALL	A	B	C	D	E	S	DIA.±1"	P	R-1	R-2	G-1	WT	h
18"	2 1/2"	9"	2'-3"	3'-10"	6'-1"	3'-0"	3'-1"	16"	29"	15 1/2"	12"	2"	1000	1-0 1/2"
24"	3"	12"	3'-2"	4'-4"	8'-1 1/2"	4'-0"	4'-1"	20"	33 3/8"	16 3/8"	14"	2 1/2"	1600	1-1 1/2"
30"	3 1/2"	15"	3'-4"	5'-4"	10'-3 3/4"	5'-0"	5'-1"	24"	37"	18 1/2"	15"	3 1/4"	1840	1-1 3/8"
36"	4"	18"	3'-6"	6'-4"	13'-3 3/4"	6'-0"	6'-1"	28"	41 3/8"	20 1/2"	16"	3 3/8"	2170	1-1 3/4"
42"	4 1/2"	21"	3'-8"	7'-4"	16'-3 3/4"	7'-0"	7'-1"	32"	45 3/8"	22 1/2"	17"	3 1/2"	2580	1-2 1/8"
48"	5"	24"	3'-10"	8'-4"	19'-3 3/4"	8'-0"	8'-1"	36"	49 3/8"	24 1/2"	18"	3 3/4"	3070	1-2 1/2"
54"	5 1/2"	27"	4'-0"	9'-4"	22'-3 3/4"	9'-0"	9'-1"	40"	53 3/8"	26 1/2"	19"	3 3/4"	3640	1-3 1/8"
60"	6"	30"	4'-2"	10'-4"	25'-3 3/4"	10'-0"	10'-1"	44"	57 3/8"	28 1/2"	20"	3 3/4"	4200	1-3 1/2"
66"	6 1/2"	33"	4'-4"	11'-4"	28'-3 3/4"	11'-0"	11'-1"	48"	61 3/8"	30 1/2"	21"	3 3/4"	4760	1-4"

NOTES:
 1. The portion of the R.C. Curtain Wall beneath the Flared End Section (Lower 1'-0") shall be placed monolithically. The Flared End Section shall then be set in place and the remaining portions of the R.C. Curtain Wall placed.
 2. All reinforcing steel are #4 Bars at 6" O.C.
 3. No separate payment will be made for the Curtain Walls. They shall be considered subsidiary to the Flared End Sections.
 4. Tongue End On Upstream Section. Groove End On Downstream Section.



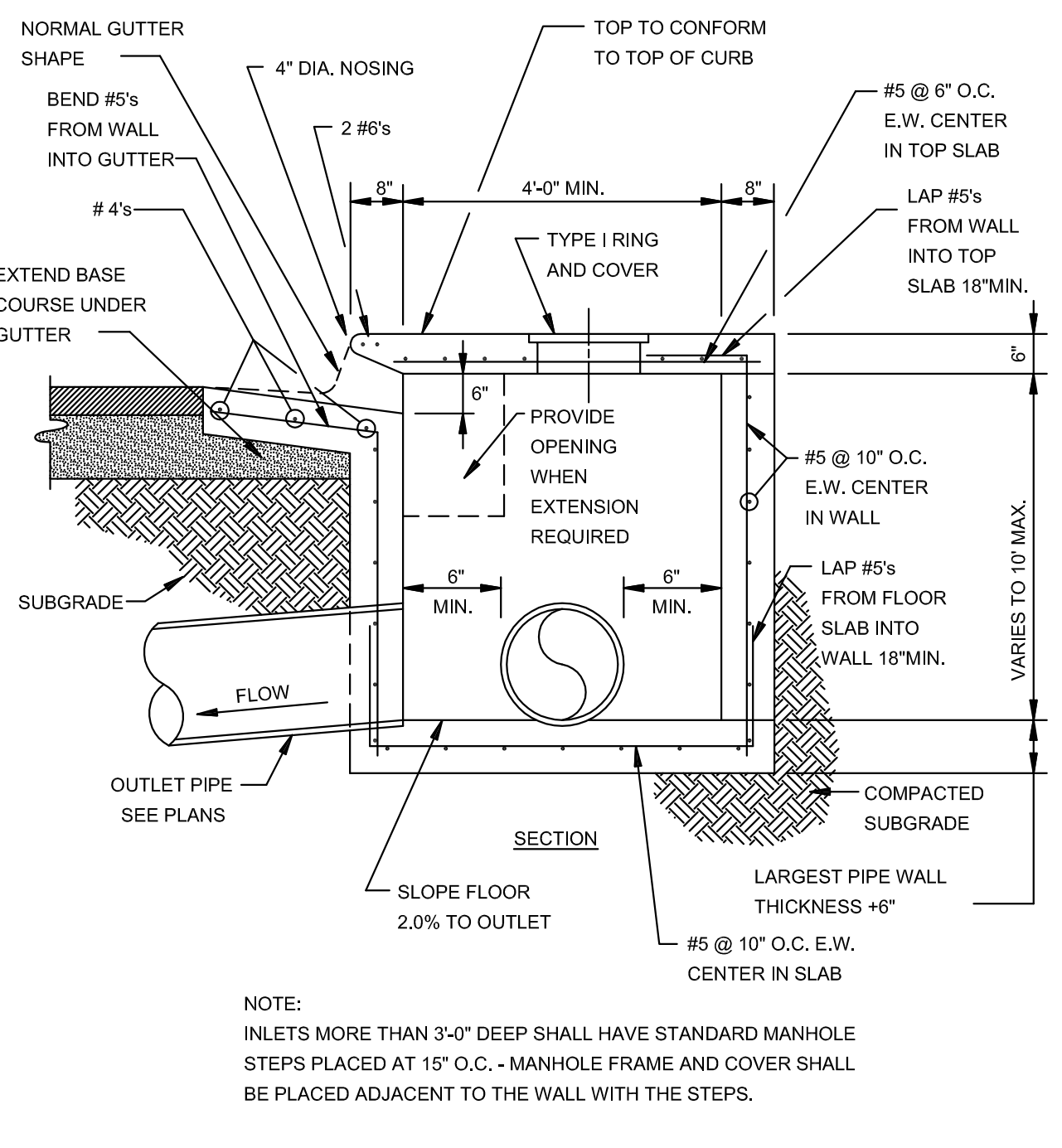
RECTANGULAR CURB INLET EXTENSION

N.T.S.



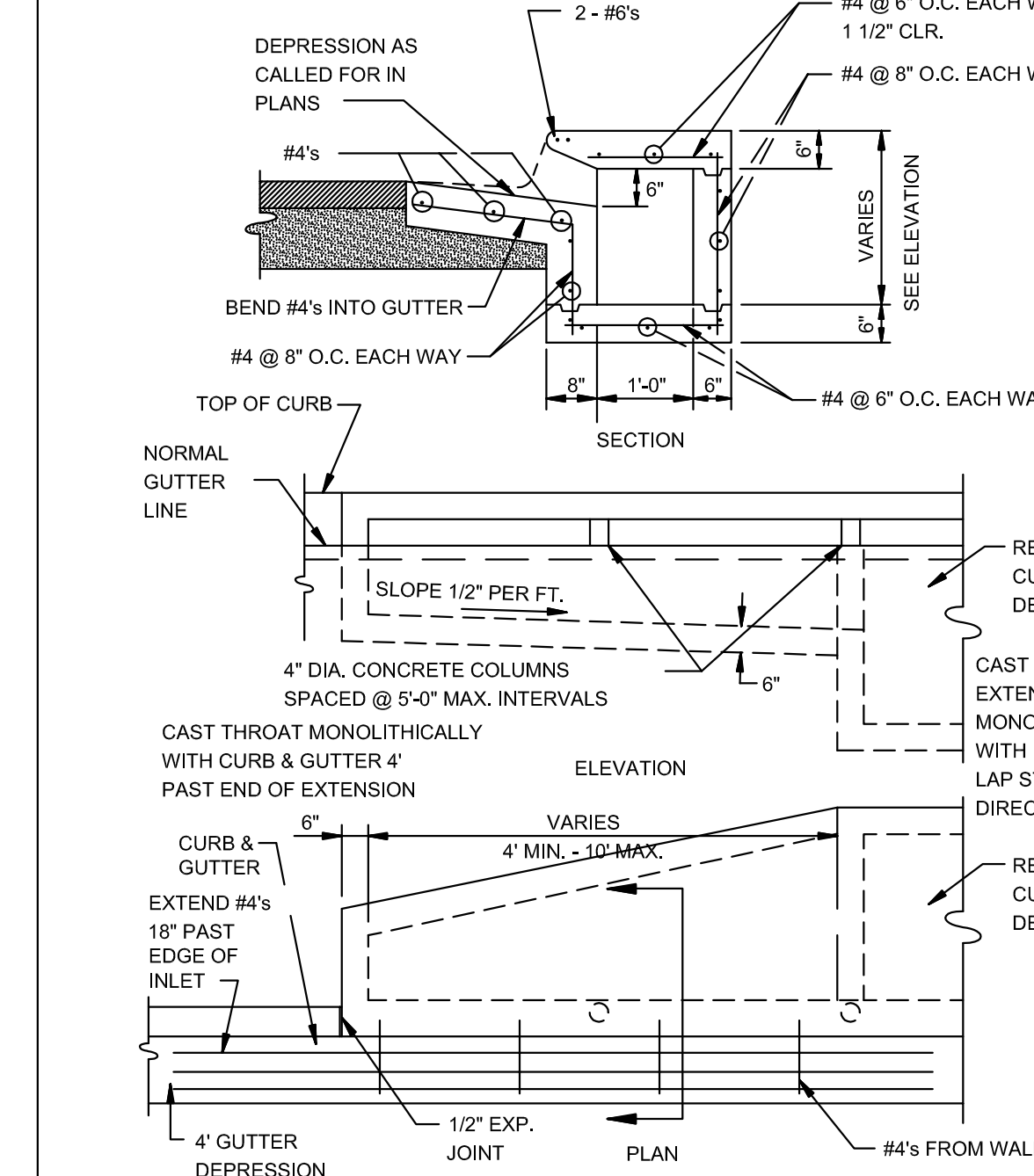
RECTANGULAR CURB INLET

N.T.S.



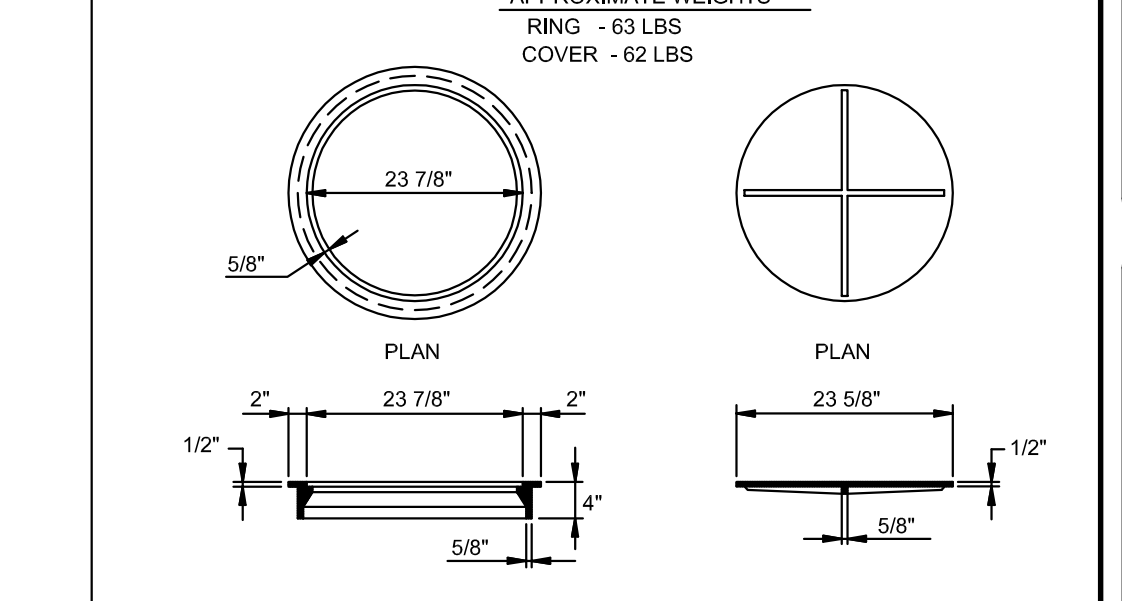
SECTION - TYPICAL CURB INLET - TYPE 'A'

N.T.S.



ALTERNATE CURB INLET EXTENSION

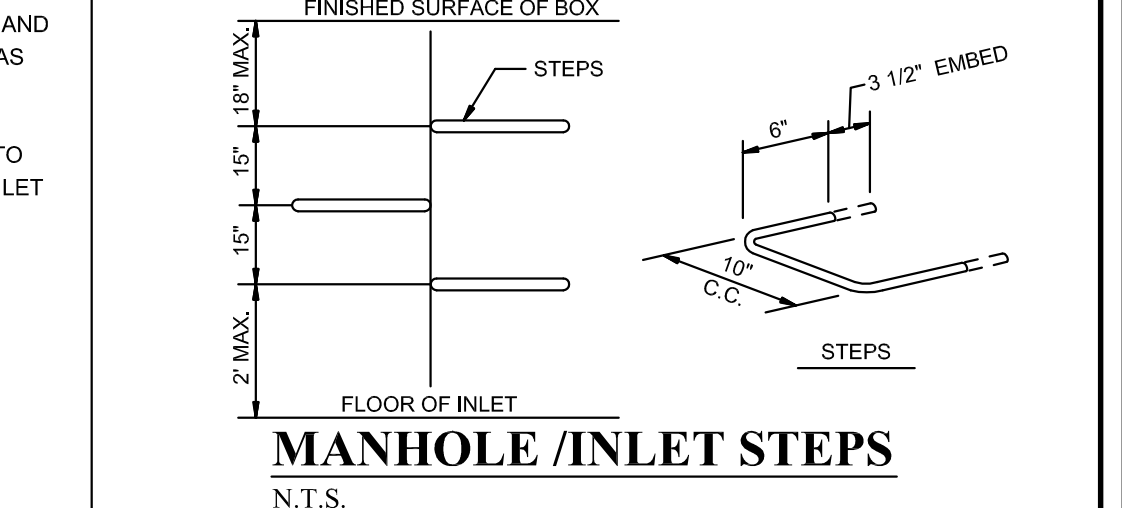
N.T.S.



TYPE I RING & COVER

N.T.S.

NOTE: TYPE I FRAME AND COVER PERMITTED ONLY ON STRUCTURES NOT SUBJECT TO VEHICULAR TRAFFIC.



MANHOLE / INLET STEPS

N.T.S.

STEPS SPECIFICATIONS:
 A. MANHOLE STEPS: CORROSION RESISTANT, COATED AND REINFORCED WITH STEEL PER ASTM C-478. STEEL REINFORCING MINIMUM 1/2" DIAMETER.
 B. CAPABLE OF SUPPORTING MINIMUM 300 lb. LOAD.
 C. NON-SLIP TEXTURED TREADS.
 D. REQUIRED IN ALL STRUCTURES 3'-0" DEEP OR DEEPER, UNLESS SPECIFIED OTHERWISE.

