

SITE DATA TABLE

ZONING:  
C-3 GENERAL COMMERCIAL DISTRICT  
REQUIRED BUILDING SETBACKS:  
FRONT (USEW) = 25'  
REAR (S) = 20'  
SIDE (W) = 10'  
SIDE (E) = 10'

SITE ACREAGE:  
PANDA EXPRESS = 46,607.28 SF / 1.069 ACRES

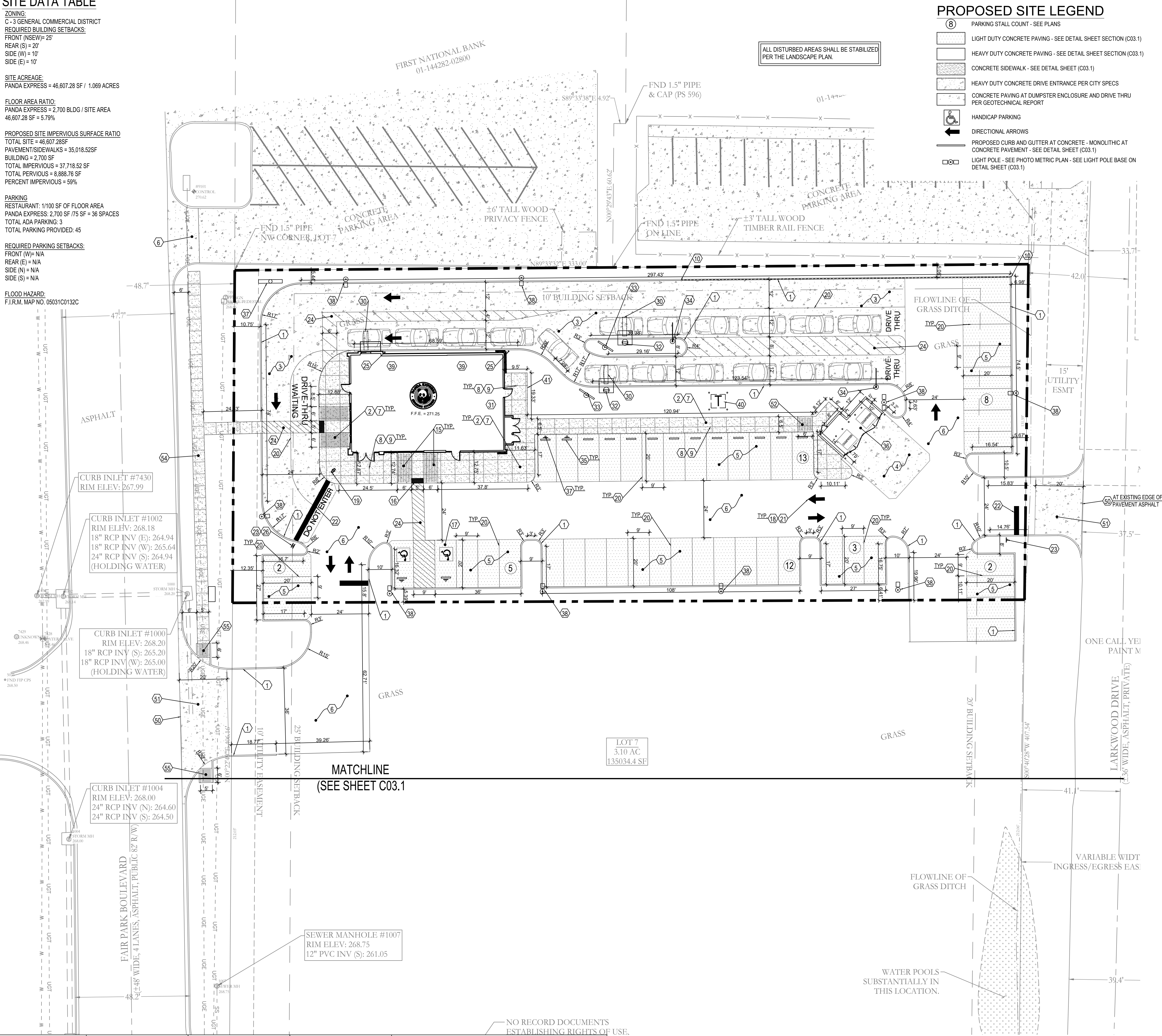
FLOOR AREA RATIO:  
PANDA EXPRESS = 2,700 BLDG / SITE AREA  
46,607.28 SF = 5.79%

PROPOSED SITE IMPERVIOUS SURFACE RATIO  
TOTAL SITE = 46,607.28SF  
PAVEMENT/SIDEWALKS = 35,018.52SF  
BUILDING = 2,700 SF  
TOTAL IMPERVIOUS = 37,718.52 SF  
TOTAL PERVIOUS = 8,888.76 SF  
PERCENT IMPERVIOUS = 59%

PARKING  
RESTAURANT: 1100 SF OF FLOOR AREA  
PANDA EXPRESS: 2,700 SF / 75 SF = 36 SPACES  
TOTAL ADA PARKING: 3  
TOTAL PARKING PROVIDED: 45

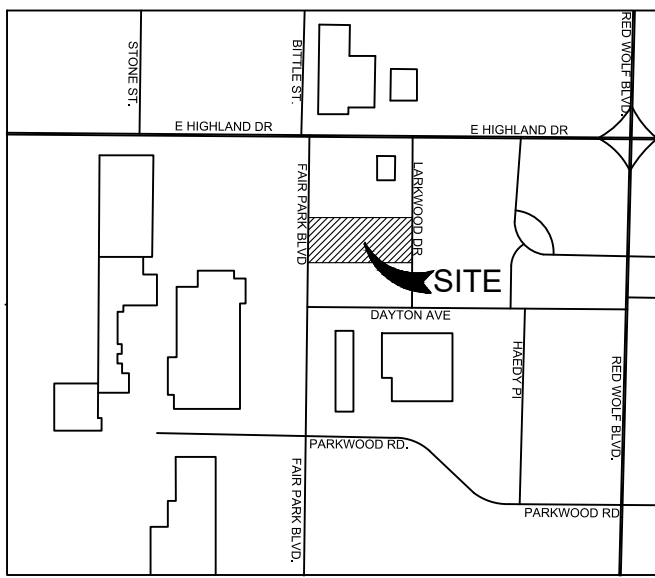
REQUIRED PARKING SETBACKS:  
FRONT (W) = N/A  
REAR (E) = N/A  
SIDE (N) = N/A  
SIDE (S) = N/A

FLOOD HAZARD:  
F.I.R.M. MAP NO. 05031C0132C



PROPOSED SITE LEGEND

- ⑧ PARKING STALL COUNT - SEE PLANS
- LIGHT DUTY CONCRETE PAVING - SEE DETAIL SHEET SECTION (C03.1)
- HEAVY DUTY CONCRETE PAVING - SEE DETAIL SHEET SECTION (C03.1)
- CONCRETE SIDEWALK - SEE DETAIL SHEET (C03.1)
- HEAVY DUTY CONCRETE DRIVE ENTRANCE PER CITY SPECS
- CONCRETE PAVING AT DUMPSTER ENCLOSURE AND DRIVE THRU PER GEOTECHNICAL REPORT
- HANDICAP PARKING
- DIRECTIONAL ARROWS
- PROPOSED CURB AND GUTTER AT CONCRETE - MONOLITHIC AT CONCRETE PAVEMENT - SEE DETAIL SHEET (C03.1)
- LIGHT POLE - SEE PHOTO METRIC PLAN - SEE LIGHT POLE BASE ON DETAIL SHEET (C03.1)



LOCATION MAP  
NOT TO SCALE

GENERAL NOTES

SEE NOTES ON SHEET C01.1

SITE KEY NOTES:

PAVEMENT AND CURBING

- ① PROVIDE CURB AND GUTTER AT ASPHALT - MONOLITHIC CURB AT CONCRETE PAVEMENT - SEE DETAIL SHEET (C03.1)
- ② PROVIDE CONCRETE SIDEWALKS PER DETAIL SHEET (C03.2) - PROVIDE CONCRETE SIDEWALK WITH INTEGRAL CURB AT BUILDING AND PARKING PER DETAIL SHEET (C03.1)
- ③ HEAVY DUTY CONCRETE PAVING AT DRIVE THRU ISLE - SEE DETAIL SHEET (C03.1) & GEOTECHNICAL REPORT (GRAY COLOR, LIGHT BROOM FINISH)
- ④ NEW HEAVY DUTY CONCRETE APRON AT DUMPSTER ENCLOSURE - SEE ARCHITECTURAL DETAIL SHEET - SEE DETAIL SHEET (C03.1)
- ⑤ LIGHT DUTY CONCRETE PAVING - SEE DETAIL SHEET (C03.1) & GEOTECHNICAL REPORT
- ⑥ HEAVY DUTY CONCRETE PAVING - SEE DETAIL SHEET (C03.1) & GEOTECHNICAL REPORT
- ⑦ SEALED CONC. SIDEWALK (AQUA MIX SEALER'S CHOICE GOLD). CONCRETE TO BE LIGHT BROOM TEXTURE FINISH. PROVIDE UNDER SLAB TREATMENT PER SOIL REPORT. PROVIDE POSITIVE DRAINAGE AWAY FROM BLDG. AND ALL SIDE WALKS.
- ⑧ EXPANSION JOINT - SEE GEOTECHNICAL REPORT FOR SPACING - SEE DETAIL SHEET (C03.1)
- ⑨ CONTROL JOINTS - SEE GEOTECHNICAL REPORT FOR SPACING - SEE DETAIL SHEET (C03.1)
- ⑩ PROVIDE EXPOSED BACK OF CURB - SEE GRADING PLAN

PAVEMENT STRIPING / ADA FEATURES / TRAFFIC SIGNAGE

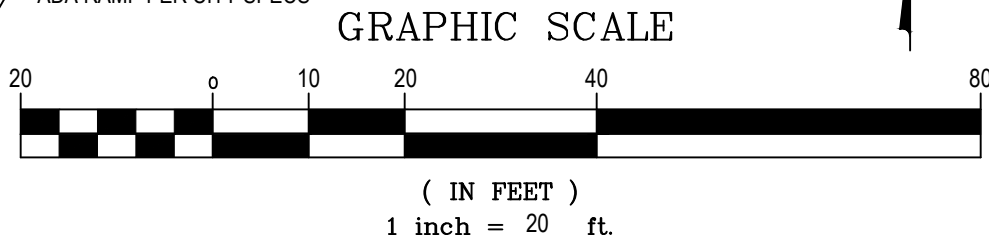
- ⑮ ADA ACCESSIBLE RAMP AT BUILDING - SEE GRADING PLAN FOR ELEVATIONS - SEE HANDICAP PARKING ON DETAIL SHEET (C03.1)
- ⑯ ADA DETECTABLE WARNING AT EDGE OF PAVEMENT - SEE HANDICAP PARKING DETAIL ON DETAIL SHEET (C03.1)
- ⑰ HANDICAP AND VAN ACCESSIBLE PARKING LAYOUT, SIGNAGE, AND STRIPING - SEE DETAIL SHEET (C03.1)
- ⑱ ALL SITE DIRECTIONAL SIGNAGE, PAVEMENT STRIPING AND MARKINGS SHALL BE COORDINATED WITH PRG'S PROJECT MANAGER.
- ⑲ "THANK YOU / DO NOT ENTER" SIGN - PER MUTCD / LOCAL SPECS.
- ⑳ 4" WIDE PARKING STRIPE PAINTED YELLOW PER MUTCD SPECS.
- ㉑ TRAFFIC ARROW PAINTED YELLOW - SEE DETAIL SHEET (C03.1)
- ㉒ STOP BAR PAINTED WHITE PER MUTCD SPECS.
- ㉓ "STOP" SIGN PER MUTCD/LOCAL MUNICIPALITY SPECIFICATIONS
- ㉔ 4" WIDE PARKING STRIPE, SPACED AT 2' O.C. AT 45° PAINTED YELLOW PER CITY SPECS.
- ㉕ BOLLARD PLAN - SEE DETAIL (C03.2)
- ㉖ "DO NOT ENTER" SIGN PER MUTCD SPECS.

PANDA EXPRESS SITE FEATURES

- ⑳ DRIVE THRU LANE SENSOR LOOP SEE DETAIL - SEE ARCH DETAIL SHEET
- ㉑ NEW PAINTED SWITCHGEAR LOCATION - SEE ELECTRICAL PLANS
- ㉒ ORDER CONFIRMATION BOARD - SEE ARCH DETAIL SHEET
- ㉓ DRIVE THROUGH MENU BOARD-INSTALLED BY GC. VERIFY WITH PANDA P.M. - SEE ARCH DETAIL SHEET
- ㉔ CLEARANCE BAR INSTALLED BY SIGN VENDOR - RE: ELECTRICAL DRAWING FOR REQUIREMENTS, G.C. TO COORDINATE LOCATION WITH PRG P.M.
- ㉕ WHEEL STOP - GNR TECHNOLOGIES, "PARK-IT" 6" PARKING CURB #16201R (BLACK AND YELLOW) OR OWNER APPROVED EQUAL
- ㉖ TRASH ENCLOSURE, CONFORM BIN SIZE WITH LOCAL WASTE MANAGEMENT COMPANY. (TYP. 6 YARD BIN) - SEE ARCH DETAIL SHEET
- ㉗ ONLINE PICKUP SIGNAGE - SEE ARCHITECTURAL DETAILS
- ㉘ LIGHT POLE - SEE PHOTO METRIC PLAN - SEE STRUCTURAL PLANS FOR DETAIL
- ㉙ TIE TO ROOF DRAIN COLLECTOR FROM BUILDING - SEE PLUMBING PLANS FOR UNDERGROUND CONNECTION AT BUILDING - SEE ELEVATION THIS SHEET - OVERFLOW PIPE FROM ROOF DRAIN TO DAYLIGHT UNDER CONCRETE FLATWORK AT FACE OF CURB - SEE PLUMBING PLANS FOR LOCATION
- ㉚ APPROXIMATE LOCATION OF PAD MOUNTED TRANSFORMER PAD PER SERVICE PROVIDER SPECS - COORDINATE WITH SERVICE PROVIDER PRIOR TO CONSTRUCTION
- ㉛ EDGE OF CONCRETE SIDEWALK AT PLANTER BED - SEE LANDSCAPE PLAN (L01.0)

ADDITIONAL SITE FEATURES

- ㉜ MATCH EXISTING GRADE
- ㉝ HEAVY DUTY CONCRETE DRIVE ENTRANCE PER CITY SPECS
- ㉞ ADA RAMP - SEE DETAIL SHEET C03.2
- ㉟ SEE ONLINE PICKUP SIGN - SEE DESIGN BY OTHERS
- ㊱ SIDEWALK PER CITY SPECS
- ㊲ ADA RAMP PER CITY SPECS



PANDA EXPRESS, INC.  
1683 Walnut Grove Ave.  
Rosemead, California  
91770  
Telephone: 626.799.9898  
Facsimile: 626.372.8288

All ideas, designs, arrangement and plans indicated or represented by this drawing are the property of Panda Express Inc. and were created for use on this specific project. None of these ideas, designs, arrangements or plans may be used by or disclosed to any person, firm, or corporation without the written permission of Panda Express Inc.

REVISIONS:

NO.	DESCRIPTION	DATE
1ST PERMIT/BID SET		04-05-24
2ND PERMIT/BID SET		05-01-24

ISSUE DATE:

1ST PERMIT/BID SET 04-05-24  
2ND PERMIT/BID SET 05-01-24

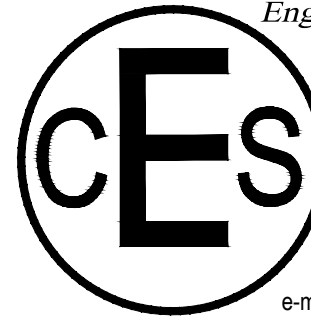
DRAWN BY: JDF

PANDA PROJECT #: S8-24-D28472  
PANDA STORE #: D28472  
ARCH PROJECT #: XXX



Civil Engineering Services

Engineering, Land Planning,  
and Environmental



7705 Spicer Farm Lane  
Fairview, Tennessee  
37062  
Phone: (615) 533-0401

e-mail: ray@civilingineeringservices.net

PANDA EXPRESS

TRUE WARM & WELCOME  
2020 FAIR PARK BLVD.  
JONESBORO, AR 72401

SITE PLAN

C03.0

TRUE WARM & WELCOME 2500 RX