

N.T.S.

LEGAL DESCRIPTION:

Part of the West half of the Southwest Quarter of Section 19, Township 14 North, Range 5 East, and being more particularly described as follows: from the Northeast corner of said West half, run S01°05'12"E a distance of 2497.41 ft. to a point along the North right-of-way of Arkansas Highway No. 18; thence along said right-of-way run S88°09'03"W a distance of 304.39 ft. to a point; thence run S87°33'12"W a distance of 704.02 ft. to the point of intersect with the West right-of-way of Rogers Chapel Road, said point being the POINT OF BEGINNING; thence S87°33'13"W a distance of 255.10 ft. to a point; thence run S00°26'33"E a distance of 54.17 ft. to a point; thence run S88°13'24"W a distance of 44.74 ft. to a point; thence leaving said Arkansas Highway No. 18 right-of-way run N00°23'22"W a distance of 414.69 ft. to a point; thence run N88°53'01"E a distance of 295.14 ft. to a point along the West right-of-way of Rogers Chapel Rd.; thence along said right-of-way run S01°06'59"E a distance of 354.06 ft. to the POINT OF BEGINNING, containing 2.50 acres, and being subject to any easements of record.

CERTIFICATE OF SURVEY:

To all parties interested in Title to these premises:
I hereby certify that I have prior to this day made a survey of the above described property as shown on the Plat of Survey hereon. The property lines and corner monuments, to the best of my knowledge and ability, are correctly established; the improvements are as shown on the Plat of Survey. Encroachments, if any, as disclosed by Survey, are shown hereon.

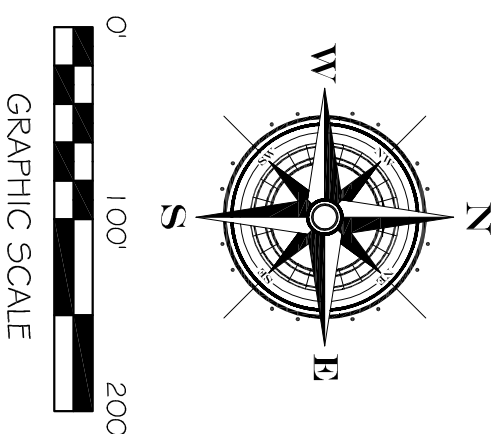
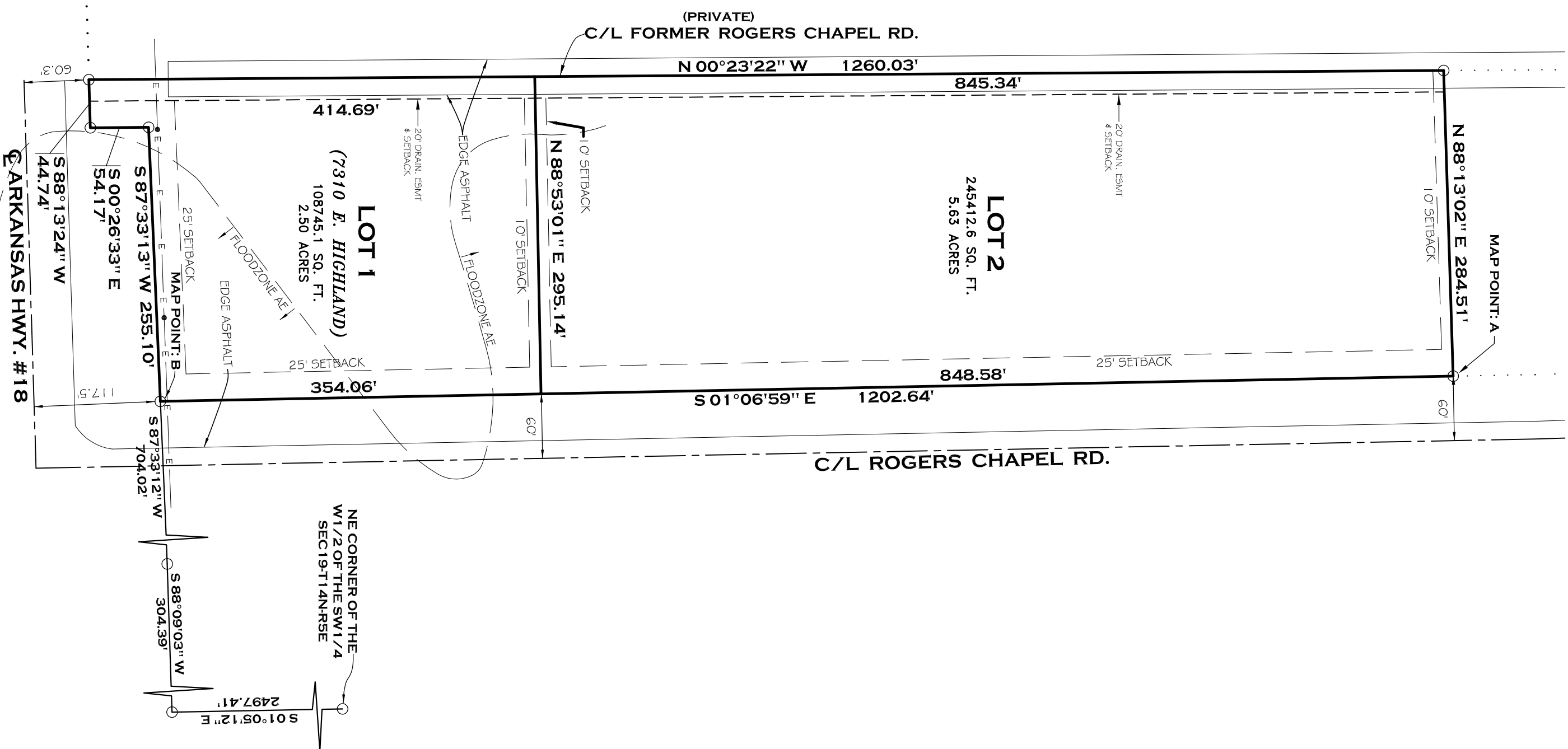
CERTIFICATE OF OWNERSHIP:

We hereby certify that we are the owners of the property shown and described hereon, that we adopt the plan of subdivision and dedicate perpetual use of all streets and easements as noted.

Tina Coots
TINA COOTS

NOTES:

- 1) ALL BEARINGS ARE BASED ON ARKANSAS NORTH STATE PLANE COORDINATE SYSTEM.
- 2) THE CLOSURE PRECISION OF THE PLAT IS IN EXCESS OF 1" IN 500,000.
- 3) THE RESEARCH COMPLETED FOR THIS SURVEY INCLUDES LEGAL DESCRIPTION PROVIDED.
- 4) ALL CORNER MONUMENTS SET ARE 1/2" REBAR, UNLESS OTHERWISE NOTED ON THE PLAT.
- 5) FLOOD PLAIN: A PORTION OF THIS TRACT DOES LIE WITHIN THE 100-YR FLOOD PLAIN PER FLOOD INSURANCE RATE MAP OF CRAIGHEAD CO., AR, AND INCORPORATED AREAS, COMMUNITY PLAN NO. 0503100151 C, DATED 09/27/91.
- 6) ZONING: R-1 and I-2
- 7) ARKANSAS STATE PLANE COORDINATE MAP POINTS
 - A) N:545947.80 E:1728434.28
 - B) N:544745.40 E:1728457.71



**SON - TINA
ROGERS CHAPEL
MINOR PLAT**
JONESBORO, ARKANSAS

**MINOR PLAT
FOR
TINA COOTS**

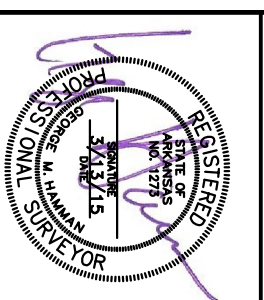
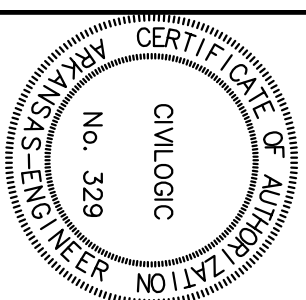
ENGINEERS PLANNERS SURVEYORS



203 Southwest Dr., Jonesboro, AR--(870)932-7880--www.civilogic.net

Drawn By: DB		Checked by: GH	
Date	Scale	Job No.	Sheet No.
04-03-15	1"=100'	115005	1 of 1
Section	Township	Range	County
19	14N	05E	CRAIGHEAD
ONLY COPIES WITH VIOLET COLORED SIGNATURE ARE ORIGINAL CIVILOGIC COPIES			

© 2015, Civilogic



JOB NO.: 115005
SHEET NUMBER
1 of 1