



# City of Jonesboro

Municipal Center  
300 S. Church Street  
Jonesboro, AR 72401

## Meeting Agenda Public Works Council Committee

---

Tuesday, July 5, 2016

5:00 PM

Municipal Center

---

### 1. Call To Order

### 2. Roll Call by City Clerk Donna Jackson

### 3. Approval of minutes

[MIN-16:075](#) Minutes for Public Works Committee Meeting on June 7, 2016

Attachments: [Minutes](#)

### 4. New Business

#### *Resolutions To Be Introduced*

[RES-16:086](#) A RESOLUTION TO THE CITY OF JONESBORO, ARKANSAS TO ACCEPT THE LOW BID AND ISSUE A PURCHASE ORDER TO ADVANCED FLUID TECHNOLOGIES, INC. FOR THE IMPROVEMENTS TO A PORTION OF THE LANDFILL GAS COLLECTION AND CONTROL SYSTEM (2016:23)

Sponsors: Engineering

Attachments: [Bid Tab](#)

[Proposal](#)

### 5. Pending Items

### 6. Other Business

### 7. Public Comments

### 8. Adjournment



## Legislation Details (With Text)

---

**File #:** MIN-16:075    **Version:** 1    **Name:**  
**Type:** Minutes    **Status:** To Be Introduced  
**File created:** 6/8/2016    **In control:** Public Works Council Committee  
**On agenda:**    **Final action:**  
**Title:** Minutes for Public Works Committee Meeting on June 7, 2016  
**Sponsors:**  
**Indexes:**  
**Code sections:**  
**Attachments:** [Minutes](#)

Date	Ver.	Action By	Action	Result
------	------	-----------	--------	--------

Minutes for Public Works Committee Meeting on June 7, 2016



# City of Jonesboro

Municipal Center  
300 S. Church Street  
Jonesboro, AR 72401

## Meeting Minutes Public Works Council Committee

---

Tuesday, June 7, 2016

5:00 PM

Municipal Center

---

### 1. Call To Order

### 2. Roll Call by City Clerk Donna Jackson

*Mayor Harold Perrin was in attendance.*

**Present** 7 - Gene Vance;Chris Moore;John Street;Mitch Johnson;Darrel Dover;Charles Coleman and Ann Williams

### 3. Approval of minutes

#### MIN-16:051

Minutes of Public Works Committee Meeting on May 3, 2016

**A motion was made by Councilman Mitch Johnson, seconded by Councilman Gene Vance, that this matter be Passed . The motion PASSED with the following vote.**

**Aye:** 6 - Gene Vance;Chris Moore;Mitch Johnson;Darrel Dover;Charles Coleman and Ann Williams

### 4. New Business

#### *Resolutions To Be Introduced*

#### RES-16:067

A RESOLUTION TO THE CITY OF JONESBORO, ARKANSAS TO AUTHORIZE THE MAYOR AND CITY CLERK TO ACCEPT A PERMANENT DRAINAGE EASEMENT FROM DELANEX, INC. (JORGE DE LA GARZA) FOR THE PURPOSE OF MAKING DRAINAGE IMPROVEMENTS

*Councilman Dover asked if this was normal thing that we do. City Engineer Craig Light said that there is a cul-de-sac off Wood Street. He said there were some drainage easements platted as a part of that subdivision. Engineer Light said they dead ended it at the end of the development onto private property. He said this will take that easement and this easement and extend it into a city street so we would have a way to drain that system which is backing up.*

**A motion was made by Councilman Darrel Dover, seconded by Councilman Chris Moore, that this matter be Recommended to Council . The motion PASSED with the following vote.**

**Aye:** 6 - Gene Vance;Chris Moore;Mitch Johnson;Darrel Dover;Charles Coleman and Ann Williams

#### RES-16:072

A RESOLUTION TO THE CITY OF JONESBORO, ARKANSAS TO ENTER INTO AN AGREEMENT WTH FISHER & ARNOLD, INC. TO PERFORM PROFESSIONAL

**ENGINEERING SERVICES**

City Engineer Craig Light said this contract is for the design of the improvements to the intersection of Highland Drive, Southwest Drive, and Main Street where the new CVS, McDonald's, Walgreens is located. He stated this is a project that is to be funded by the Arkansas State Highway Department. Engineer Light stated that we would be providing the Engineering services to accelerate the construction phase of this project which is currently slated for 2019. He said if we move forward with the design now, we could get the construction started long before 2019. Chairman Street asked if \$133,627 was the price. Engineer Light said yes. Chairman Street asked if we pay that up front and the Highway Department reimburses the cost. Engineer Light stated that it is his understanding they will be matching the city's share of the projects. Councilman Dover asked if the MPO would have to reprioritize that. Mayor Harold Perrin stated that they will meet on June 30th to reprioritize it to 2016. He stated this intersection will create a lot of traffic due to all of the new businesses going in. Councilman Moore asked if the council should move the meeting up. Chairman Street stated that Erica has already sent the notice out and they are already in the process of fast tracking that.

**A motion was made by Councilman Darrel Dover, seconded by Councilman Mitch Johnson, that this matter be Recommended to Council . The motion PASSED with the following vote.**

**Aye:** 6 - Gene Vance;Chris Moore;Mitch Johnson;Darrel Dover;Charles Coleman and Ann Williams

**5. Pending Items****6. Other Business**

Councilman Dover asked about the progress of the roundabout on Aggie Road. Mayor Perrin said they met with James on Friday. Engineer Light said we are giving them some assistance to get them back on track. He said they hope to be done before school starts. Engineer Light stated that there were issues with onsite dirt not meeting moisture contents. He said the dirt has to dry and if they wait for it to dry, no deadlines will be met. Engineer Light stated we agreed to provide him with materials that will meet moisture content. Mayor Perrin said it would be very little cost to the city for that.

Mayor Perrin asked Engineer Light when bids would go out. Engineer Light said bids will advertise on Thursday and will be opened the 20th. He said we have already sent the bid package out to Steve Kent to send over to the paper. Mayor Perrin asked for three things including mowing and ditch cleaning. Chairman Street asked Mayor Perrin if he was going to speak about drainage ditches. Mayor Perrin said yes in his Mayor's Report.

**7. Public Comments****8. Adjournment**

**A motion was made by Councilman Mitch Johnson, seconded by Councilman Darrel Dover, that this meeting be Adjourned . The motion PASSED with the following vote.**

**Aye:** 6 - Gene Vance;Chris Moore;Mitch Johnson;Darrel Dover;Charles Coleman and Ann Williams



Legislation Details (With Text)

<b>File #:</b>	RES-16:086	<b>Version:</b>	1	<b>Name:</b>	Purchase order for improvements to the landfill gas collection and control system
<b>Type:</b>	Resolution	<b>Status:</b>		<b>Status:</b>	To Be Introduced
<b>File created:</b>	6/27/2016	<b>In control:</b>		<b>In control:</b>	Public Works Council Committee
<b>On agenda:</b>		<b>Final action:</b>		<b>Final action:</b>	
<b>Title:</b>	A RESOLUTION TO THE CITY OF JONESBORO, ARKANSAS TO ACCEPT THE LOW BID AND ISSUE A PURCHASE ORDER TO ADVANCED FLUID TECHNOLOGIES, INC. FOR THE IMPROVEMENTS TO A PORTION OF THE LANDFILL GAS COLLECTION AND CONTROL SYSTEM (2016:23)				
<b>Sponsors:</b>	Engineering				
<b>Indexes:</b>	Other				
<b>Code sections:</b>					
<b>Attachments:</b>	<a href="#">Bid Tab</a> <a href="#">Proposal</a>				

Date	Ver.	Action By	Action	Result
------	------	-----------	--------	--------

A RESOLUTION TO THE CITY OF JONESBORO, ARKANSAS TO ACCEPT THE LOW BID AND ISSUE A PURCHASE ORDER TO ADVANCED FLUID TECHNOLOGIES, INC. FOR THE IMPROVEMENTS TO A PORTION OF THE LANDFILL GAS COLLECTION AND CONTROL SYSTEM (2016:23)

WHEREAS, the City of Jonesboro has desires to accept the low bid and issue a purchase order for improvements to a portion of the Landfill Gas Collection and Control System at 1624 Strawfloor Drive;

WHEREAS, the low bidder and the firm selected for these improvements is Advanced Fluid Technologies, Inc.;

WHEREAS, after the expiration of the warranty period, Advanced Fluid Technologies, Inc. have agreed to provided yearly maintenance for up to three years for the price specified in the attached proposal.

WHEREAS, funding for the execution of the purchase order shall come from the Capital Improvements budget and compensation shall be paid in accordance with the bid documents.

NOW THEREFORE BE IT RESOLVED BY THE CITY COUNCIL FOR THE CITY OF JONESBORO, ARKANSAS THAT:

Section 1: That the City of Jonesboro shall accept the low bid and issue a purchase order to Advanced Fluid Technologies, Inc. for improvements to a portion of the Landfill Gas Collection and Control System at 1624 Strawfloor.

Section 2. That funding for the execution of the purchase order shall come from the Capital Improvements budget and compensation shall be paid in accordance with the bid documents.

Section 3. The Mayor is authorized by the City Council for the City of Jonesboro to execute all documents necessary to issue a purchase order.



City of Jonesboro  
**Invitation to Bid - Not an Order**

P.O. Box 1845  
 300 South Church St. Rm 421 (72401)

**Purchasing Office**

Bid No. 2016:23

**Jonesboro, Arkansas 72403**

Date June 3, 2016

Sealed bids, subject to the conditions on the reverse hereof, and as may be attached hereto, will be received at this office until **2:00pm Wed, June 22, 2016** and then publicly opened, for furnishing the supplies, materials and/or services as described below and tabulated for presentation to the City Council on N/a.

F.O.B see below  
 Maximum Delivery or completion time after issuance of Purchase Order or work ordered by the City n/a days.

By: **Steve A. Kent**  
 Purchasing Agent  
 (870)932-0740

Item #	Description	Quantity	Unit	Unit Price	Amount
1.	<p>SCOPE:                      The City of Jonesboro is requesting bids for improvements to a portion of the Landfill Gas Collection and Control System at 1624 Strawfloor Drive in Jonesboro, Arkansas. Bidder is to furnish all labor, material, and equipment, and performing all work required to implement the proposed improvements.</p> <p>Improvements as per specifications attached -----</p> <p>Bid price will contain all taxes (sales) freight, labor, materials/equipment. (Invoice price)</p> <p>Warranty on Equipment being bid: <u>5 year Standard</u></p> <p>After warranty period, please state a yearly maintenance fee for up to 3 (three) years after warranty period expires.</p> <p>Year 1 <u>5,233.40</u>                      Year 2 <u>5,233.40</u>                      Year 3 <u>5,233.40</u></p> <p>A site map may be obtained by going to the Bid page at <a href="http://www.jonesboro.org">www.jonesboro.org</a> and downloading the attached file named: Site Map.</p> <p>Bidder shall include a listing and any literature pertaining to the equipment and materials being used in the bidder's quote.</p> <p>There are 3 (three) pages to this bid. All pages must be returned to make a complete bid.</p> <p>A bid bond and performance bond will be required with this bid. See page 2 #9 B &amp; C for explanations.</p> <p>The City of Jonesboro reserves the right to accept or reject any and any part of any bid received.</p> <p>Bid number (2016:23) <u>must</u> be annotated on the outside of the bidder's envelope.</p> <p>Bid <u>must</u> be signed or bid will be rejected.</p> <p><b>Bid opening will be in Engineering Conference Room on 3<sup>rd</sup> floor if bidder is attending.</b></p> <p>NOTE: To receive more bids like this when they become available, Vender's can sign up by going to the Jonesboro web site, click on Doing Business and sign up for bid notices.</p> <p>Cash Discounts <u>1</u> % <u>10</u> Days</p>	1		\$ 89,751.53	\$ 89,751.53

**Execution of Bid**

Date 16 June 16

We, the undersigned, have read all the requirements set forth in this bid proposal including specification, instructions, conditions and pertinent information regarding the articles being bid on, and we agree to furnish articles at the prices stated.

Arkansas Use Tax Register No. 0140426-10-001 Phone # (501) 835-3200

Bidder Advanced Fluid Technologies, Inc. Address 7801 Warden Rd, St

By Mary SK (Person Authorized to Sign Bids) City Sherwood  
 (Title)

**Unsigned Bids Will Be Rejected**

**Bids number MUST be annotated on Bidder's envelope.  
 Bids are subject to rejection unless submitted on this form.  
 Notice to bidders: See reverse side for instructions and conditions.**



## CITY OF JONESBORO, ARKANSAS

### CONDITIONS OF BIDDING

COMPLIANCE WITH THE FOLLOWING CONDITIONS IS NECESSARY FOR CONSIDERATION OF THIS BID:

1. **SIGNATURE** - This bid must be signed with the firm name and by an authorized officer, employee, or agent.
2. **SALES OR USE TAX** - is not to be shown in the bid price (unless otherwise stated) but is to be added by the vendor to the invoice billing to the City. The City is not exempt from Arkansas State Sales & Use Tax. Although Use Tax is not included in this bid, vendors are to register and pay tax direct to the Arkansas State Revenue Department.
3. **FREIGHT & OTHER DELIVERY CHARGES** - to designated City facility in Jonesboro must be included in bid. Charges may not be added after the bid is opened.
4. **DISCOUNTS** - Show rate, total amount, and latest day any discounts will be allowed after receipt of article and invoice, otherwise City will deduct allowed discount when payment is made.
5. **FIRM PRICE** - All prices quoted will remain firm for at least 30 days from date of bid, unless otherwise specified by the City or bidder.
6. **IDENTICAL BIDS** - In the event of two or more identical low bids, the contract may be awarded arbitrarily or for any reason to any of such bidders or split in any proportion between the said two or more bidders at the discretion of City.
7. **LIQUIDATED DAMAGES** - Liquidated damages shall be assessed beginning on the first day following the maximum delivery or completion time entered on this bid form and/or provided for by the plans and specifications.
8. **AMBIGUITY IN BID** - Any ambiguity in any bid as the result of omission, error, lack of clarity or non-compliance by the bidder with specifications, instructions, and all conditions of bidding shall be construed in the light most favorable to the City.
9. **CONSTRUCTION** -
  - A. When noted, the Contractor is to supply the City with evidence of having and maintaining proper and complete insurance, specifically Workman's Compensation Insurance in accordance with the laws of the State of Arkansas, Public Liability and Property Damage. All premiums and cost shall be paid by the Contractor. In no way will the City be responsible in case of accident.
  - B. When noted, a Certified check or bid bond in the amount of 5% of total bid shall accompany bid.
  - C. A performance Bond equaling the total amount of any bid exceeding \$3,000.00 must be provided for any contract for the repair, alteration or erection of any public building, public structure or public improvement (pursuant to Ark. Stat. SS51-632.SS51-565 as amended.)
10. The City reserves the right to reject any and all bids, to accept in whole or in part, to waive any informalities in bids received, to accept bids on materials or equipment with variations from specifications in those cases where efficiency of operation will not be impaired, and unless otherwise specified by the bidder, to accept any item in the bid. If unit prices and extensions thereof do not coincide, the City may accept the bid for the lesser amount whether reflected by the extension or by the correct multiple of the unit price.
11. **Minority Business Policy** - It is the policy of the City of Jonesboro that minority business enterprises shall have the maximum opportunity to participate in the city purchasing process. Therefore, the City of Jonesboro encourages all minority businesses to compete for, win and receive contracts for goods, services, and construction. The city also encourages all companies to subcontract portions of any city contract to minority business enterprises.

---

### INSTRUCTIONS TO BIDDERS

(PLEASE READ CAREFULLY)

1. Submit bid on bid form on reverse side of this sheet. NO Facsimiles will be accepted.
2. Address all bids to: Purchasing Agent, P.O. Box 1845, Jonesboro, Arkansas 72403-1845 and make certain to indicate identifying bid number on the outside of bidder's envelope.
3. DO NOT include Federal Excise Tax in bid. City will furnish exemption certificate.
4. State Manufacturer, Brand Name, Model, etc for each item bid on.
5. Samples of items, when required, must be furnished free, and, if not called for within 30 days from date of bid opening, will be disposed of by City
6. Bids received after stated time will not be considered.
7. Be sure and read all conditions and verify amounts before submitting bids. No changes or additions will be allowed after submission.
8. Guarantees and warranties should be attached as a part of the bid as they may be a consideration in awarding a contract.
9. Delivery or contract completion time is to be shown, as this date may, where time is of the essence, determine the contract award.
10. Additional information may be obtained from the Purchasing Office.

**THE CITY RESERVES THE RIGHT TO ACCEPT PART OR ALL OF ANY SPECIFIC BID OR BIDS AND TO ACCEPT ANY BID WITH OR WITHOUT TRADE-IN. THE CITY FURTHER RESERVES THE RIGHT TO REJECT ALL BIDS, OR PART OR ALL OF ANY SPECIFIC BID OR BIDS.**

Click on Purchasing at [www.jonesboro.org](http://www.jonesboro.org) for any additional information.

The landfill gas extraction wells 45-58 located on the old Class 1 landfill maintain water in the screened interval of the wells. The City of Jonesboro is requesting performance based proposals for effectively dewatering the referenced gas extraction wells with an automatic pumping system. The dewatering system will discharge to existing condensate sumps that are a component of the Landfill Gas Collection and Control System.

Proposals shall be accompanied by a cashier's or certified check upon a national or state bank in an amount not less than five percent (5%) of the total maximum bid price payable without recourse to the City of Jonesboro or a bid bond in the same amount from a reliable surety company, as a guarantee that the Bidder will enter into a contract and execute performance and payment bonds within ten (10) days after notice of award of Contract to him. The notice of award of Contract shall be given by the City of Jonesboro within sixty (60) days following the opening of proposals.

The successful Bidder must furnish a performance and payment bond in the amount of one hundred percent (100%) of the contract price from an approved surety company holding a permit from the State of Arkansas to act as surety, or other surety or sureties acceptable to the Owner. A copy of the required performance and payment bond form and a site map of the project area may be downloaded from the City of Jonesboro website ([www.jonesboro.org](http://www.jonesboro.org)) Any addendum to this bid will be post no later than 5 days before bid opening by clicking on "Purchasing" at [www.jonesboro.org](http://www.jonesboro.org).

The attention of bidders is called to the fact that no contractor's license is required to submit a bid, but successful bidder must be licensed prior to entering into a contract with the City for the project.

Interested parties may contact Lance Powell, P.E. at (870) 972-5316 for additional information or to schedule a site visit.

Proposals will be considered on the basis of cost, the bidder's financial responsibility, his equipment, and his past performance in completing similar work. The City of Jonesboro reserves the right to reject any or all proposals, to waive any informalities, and to accept the proposal deemed to be for their best interest.

The City of Jonesboro encourages participation of small, minority, and woman owned business enterprises in the procurement of goods, services, and construction, either as a general contractor or subcontractor. It is further requested that whenever possible, majority contractors who require sub-contractors seek qualified small, minority, and women owned businesses to partner with them.



41 H Odell School Road  
Concord, NC 28027

(P): (704) 786-8158  
(F): (704) 788-6814

Date of issue: January 1<sup>st</sup> 2014

**Warranty:**

**XP, eP & V4 range pneumatic pumps as manufactured by PumpOne Environmental LLC**

**Definition:**

XP, eP, and V4 (Viscous) range of pneumatic pumps include the following models:

1. XP4 and eP4 BL
2. XP4 LDD BL and TL
3. XP4 and eP4 TL
4. Viscous

The following text refers to the pump only this shall mean any of the foregoing models: -

The pump is guaranteed against defective material and workmanship for a period of 5 years, from date of purchase. Should the pump develop a defect within this warranty period, the unit will be repaired, or - at our option - replaced free of charge. If the pump is found to be defective, please notify us so that we can assist you in evaluating the problem and to make an assessment as to the necessity of returning it to us for repair or replacement. If it is necessary to return it to us, please send it to the address above along with proof of purchase and return materials authorization (RMA) number. This warranty is limited solely to the pump itself.

The pumps are designed to pump landfill leachates and landfill gas condensate. We guarantee that the pumps are capable of operating in accordance with the performance information published on our website [www.pumponellc.com](http://www.pumponellc.com) under the conditions indicated therein.



41 H Odell School Road  
Concord, NC 28027

(P): (704) 786-8158  
(F): (704) 788-6814

**Warranty exclusions: -**

- I. Build-up of carbonate scale or other salts/precipitates inhibiting the operation of the pump;
- II. Build-up of solids inhibiting the operation of the pump;
- III. Improper use or improper servicing procedures;
- IV. Mishandling;
- V. Damage;
- VI. Modification by user: if the purchaser or user modifies or attempts to modify the pump in any way and this includes unauthorized tampering, the warranty will be voided.

Note: With a partial vacuum, or pressure above atmospheric in a well will affect the activation point of the pump when the pump air exhaust is ported outside the well, but does not affect pump operation. Contact PumpOne for guidance.

PumpOne Environmental stands behind our products with a warranty that exceeds any other supplier. We believe in adding value by proper training for personnel to maintain the equipment along with offering the proper tools to keep the equipment in good working order.

Document written by: Shawn Devinney, President/CEO



## DESCRIPTION

The ep4-BL series (short) is a bottom filling, float-activated, air-powered positive displacement pump, designed for severe conditions found in landfill and remediation applications. The ep4 can operate in corrosive fluids and temperatures up to 150°F.



## CORROSION & TEMPERATURE RESISTANCE

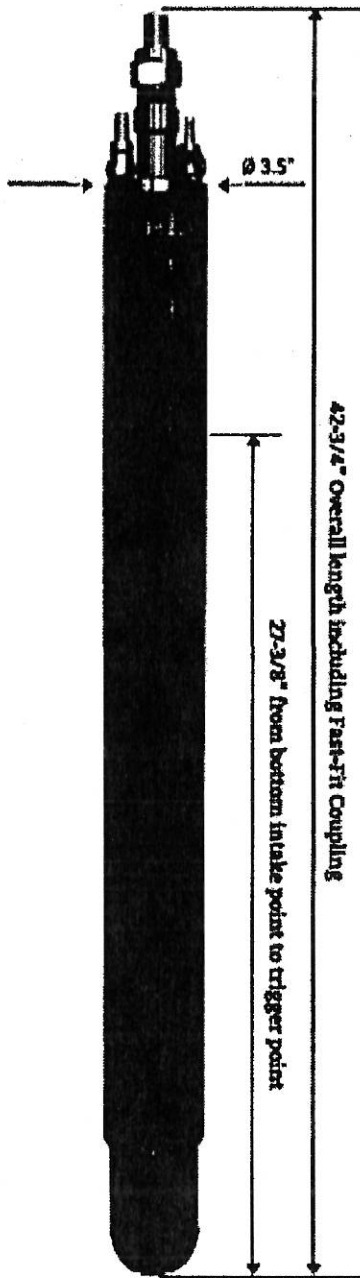
Exceptional corrosion & temperature resistance due to the highest quality materials of construction which include:

- 316L Stainless Steel for all major metal parts & fasteners
- 17/4 Stainless Steel for magnetic parts
- Acetal / SS Rocker assembly
- PTFE (Teflon®) discharge check valve ball
- UHMW PE actuator rod & inlet check valve shuttle for excellent abrasion resistance
- FKM (Viton®) for all 'o'-ring seals
- PVDF (Kynar®) for minor plastic parts
- 150 PSI / 150°F rated float
- FRP high performance filament wound fiberglass casing with integral epoxy liner, max operating temp. 210°F
- 316L Stainless Steel casing available on request

## ENHANCED DESIGN

- Solid, machined pump head with integral discharge check valve
- No penetrations through the center discharge tube meaning no air leakage into discharge
- Solid machined bottom check valve assembly with minimal parts and easy disassembly
- Adjustable air valve poppets and magnets.
- No sealants or thread locking compounds required
- Air inlet and exhaust valves secured with cotter-pins
- Compatible with Fast-Fit couplings or standard hose-barbs
- Unmatched service and support
- 5 Year standard warranty

41H ODELL SCHOOL ROAD | CONCORD, NC 28027 | 704.786.8158 | WWW.PUMPONELLC.COM



## SPECIFICATIONS

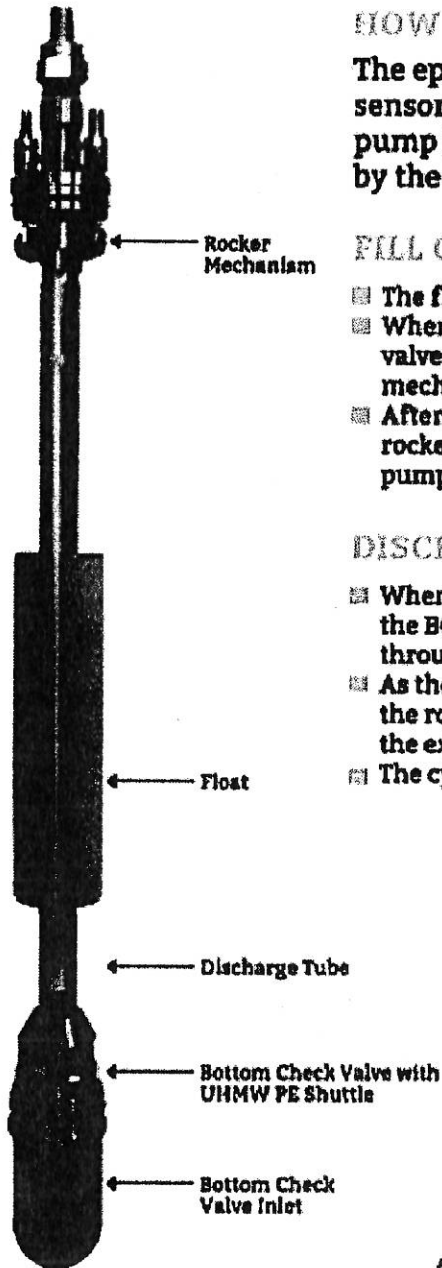
Pump Type	ep4-BL bottom loading pneumatic pump
Actuation	Float activated, fully automatic
Weight: FRP / 316 SS casing	17.2 lbs / 21.2 lbs
Volume of liquid displaced per cycle	0.32-0.37 Gallons (US)
Maximum flow rate with 1" O.D. Tubing	11.3 GPM (US)
Air pressure operating range	5 - 100 psi
Maximum operating temperature	150°F
Air consumption	0-5 SCFM
pH range	2-13
Minimum liquid density	0.72 SG

## MATERIALS

All major metallic parts	316L Stainless Steel
Magnetic parts	17/4 Stainless Steel & NdFeB
Rocker assembly	Acetal / SS
Discharge check valve ball	PTFE (Teflon®)
Actuator rod & inlet check valve shuttle	UHMW PE
'o'-ring seals	FKM (Viton®)
All minor plastic parts	PVDF (Kynar®)
Option on pump casing	FRP / 316 SS
Float	Closed cell foam, 150 psi / 150°F rated, with 316 SS end plates
Casing	FRP high performance filament wound epoxy composite tube, max operating temp. 210°F

## DOWN-WELL TUBE & CONNECTION OPTIONS

Tube Material	Nylon 12
Discharge	1" OD
Air Supply	1/2" OD
Air Exhaust	5/8" OD
Fast Fit Couplings	13/16", 1/2" & 3/8" Barb Sizes
Standard Tube Barbs	13/16", 1/2" & 3/8" Barb Sizes



## HOW IT WORKS

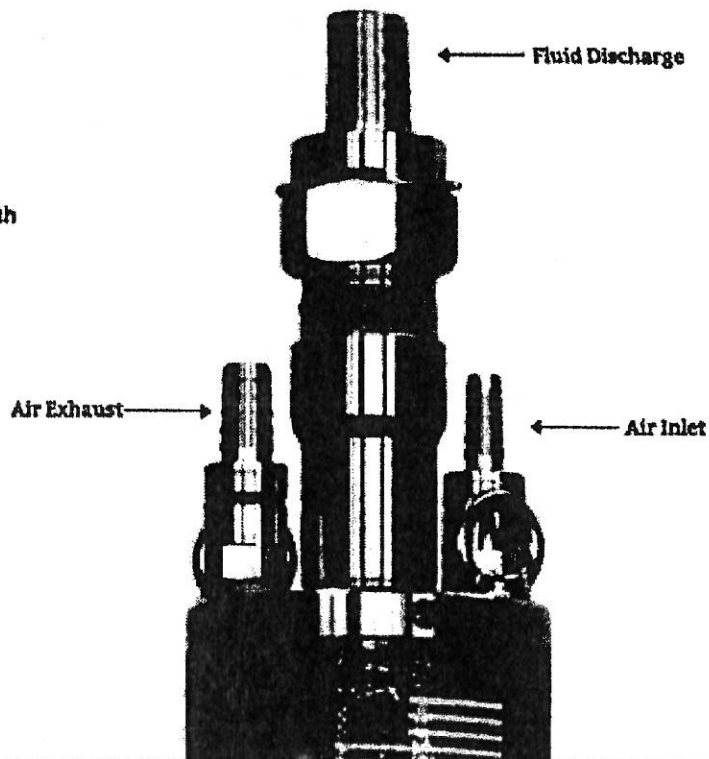
The ep Series pumps are air powered and require no sensors, timers, electrical power or control panels. The pump is activated by an internal float that is triggered by the rise of liquid in a well or sump.

### FILL CYCLE

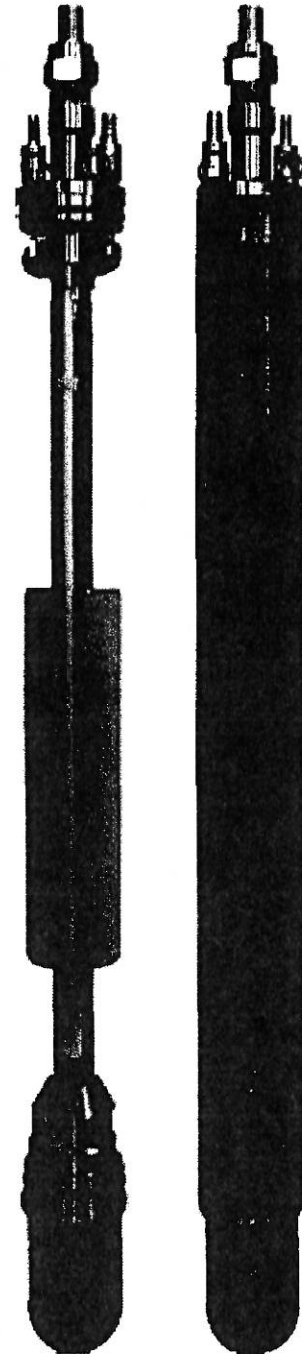
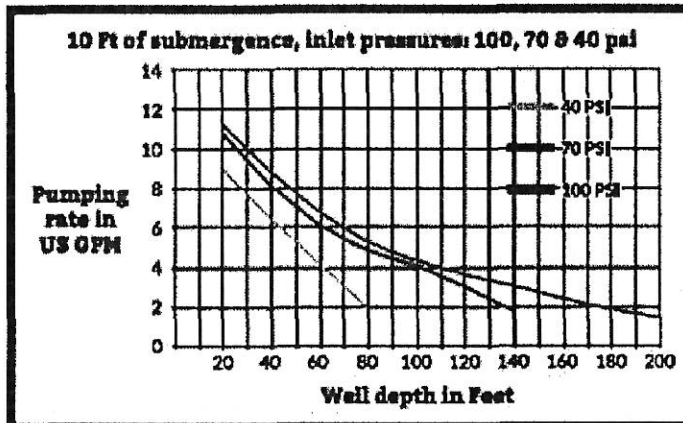
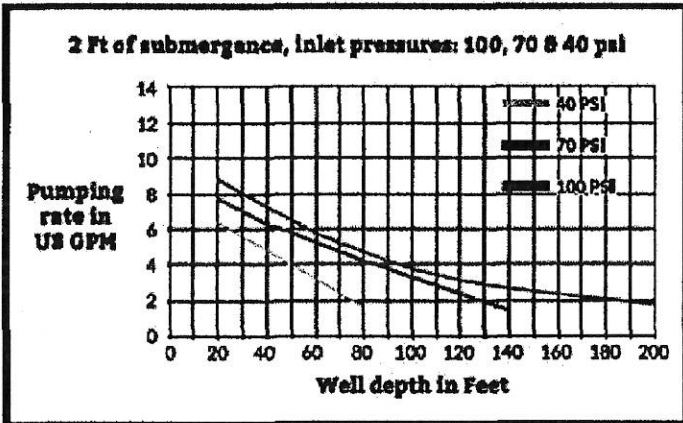
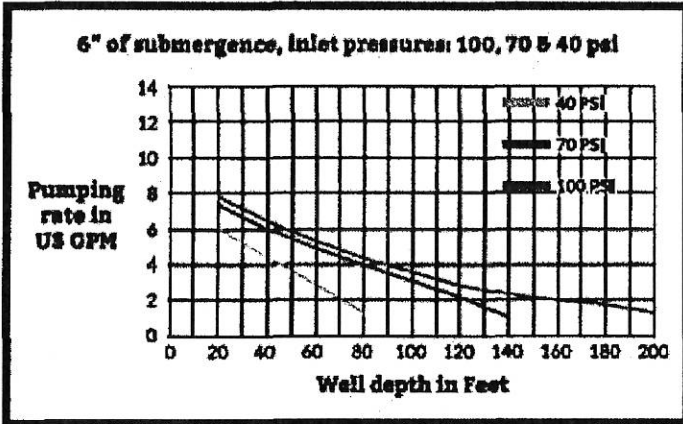
- The fluid pushes the BCV shuttle open which allows the pump to fill
- When the fluid rises, air is forced out of the pump via the air exhaust valve. As the fluid rises, so does the float, causing the rocker mechanism to trip and close the exhaust valve.
- After the pump has completely filled, and the float has tripped the rocker mechanism, the air inlet valve opens allowing air to enter the pump and pressurize the chamber inside the pump.

### DISCHARGE CYCLE

- When the air inlet valve is open and the pump chamber is pressurized the BCV shuttle closes and forces the fluid up the discharge tube through the discharge port.
- As the fluid is displaced the level will fall along with the float, causing the rocker mechanism to trip, closing the air inlet valve and opening the exhaust valve.
- The cycle repeats until the well or sump is pumped down to level.



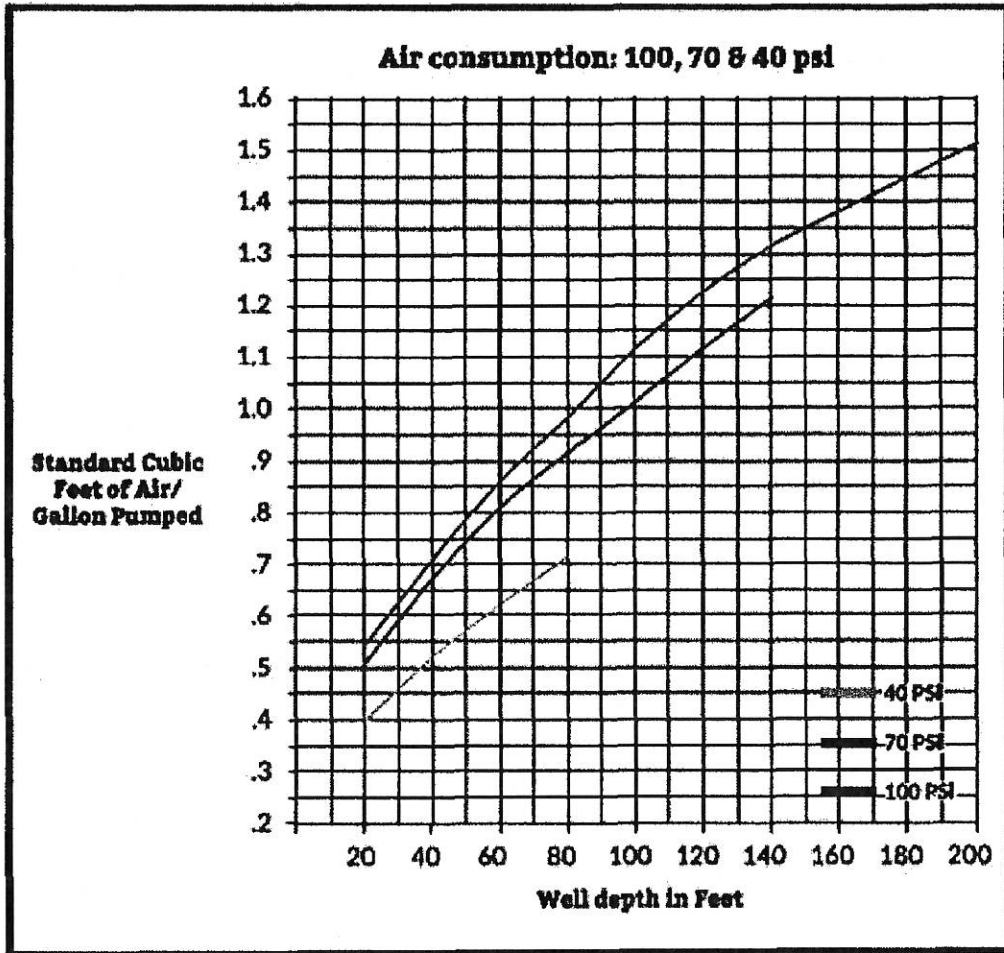
The curves are based on 1" OD discharge tubing. Flow rates will vary with site conditions.





# AIR CONSUMPTION GRAPH

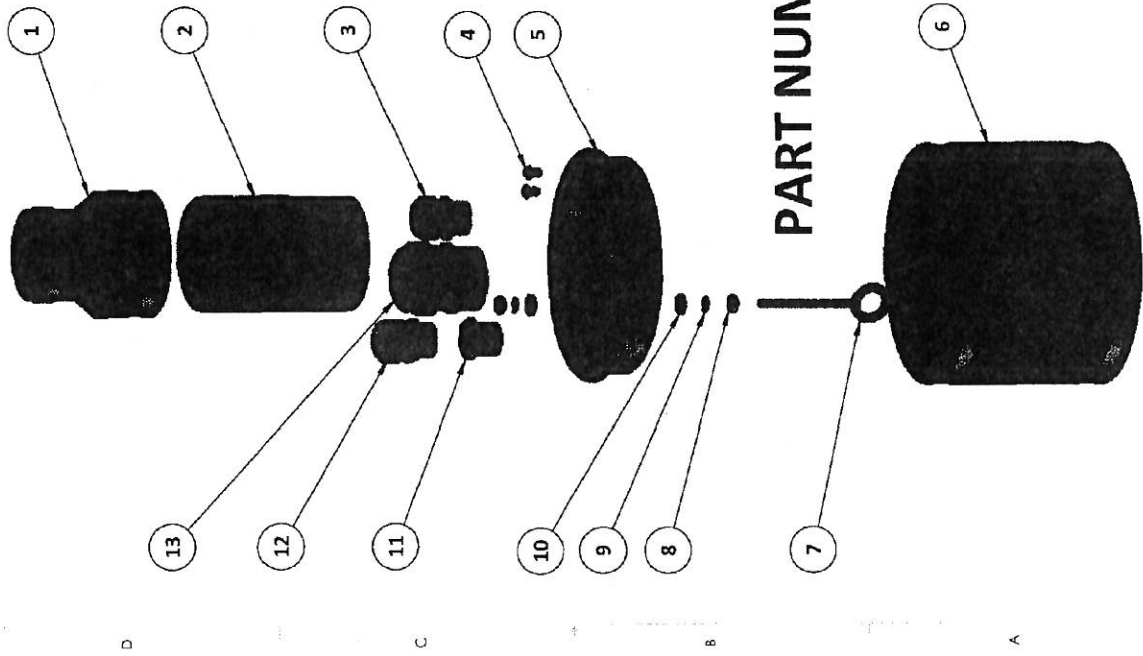
The curves are based on 1" OD discharge tubing. Air consumption rates will vary with site conditions.



4115 ODELL SCHEIDT ROAD | CONCORD, NC 28027 | 704.766.8158 | WWW.PUMPONELLA.COM

1 2 3 4 5 6 7 8

ITEM NO.	PartNo	DESCRIPTION	QTY.
1	1000315	FERNCO - 3"X2" FERNCO COUPLING	1
2	1000319	NIPPLE, 3" PVC SCH. 40	1
3	1000373	PASS THRU, 1/2" OD, AIR IN	1
4	1000378	CAP SCREW, 1/4"-20 X 3/8" BUTTON SOCKET	2
5	1000318	WELL SEAL, 6" CORE, DUAL EXTRACTION, PASS THRU	1
6	1000314	FERNCO, 6" PIPE TO PIPE COUPLING	1
7	1000374	EYE BOLT, 1/4"-20 X 4, SS	1
8	1000377	NUT, HEX, 1/4, SS	2
9	1000376	WASHER, LOCK, 1/4, SS	2
10	1000375	WASHER, FLAT, 1/4" NEOPRENE BONDED, SS	2
11	1000367	PLUG, 3/4" PVC, THREADED	1
12	1000372	PASS THRU, 5/8" OD, EXHAUST	1
13	1000366	PASS THRU, 1" OD, DISCHARGE	1



# PART NUMBER 2000060



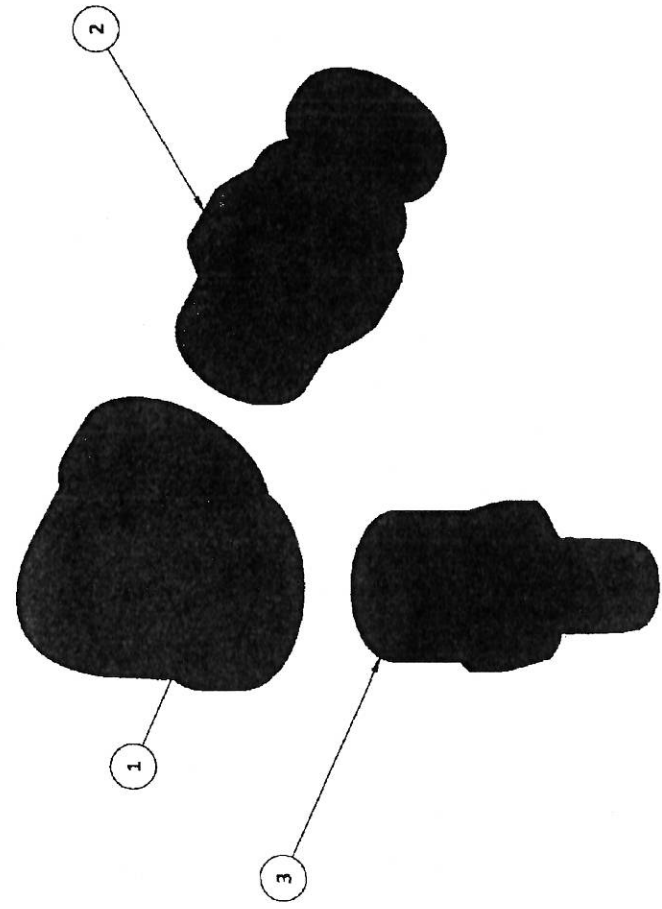
PumpOne Environmental, LLC

**PUMPONE ENVIRONMENTAL**  
PROPERTY AND CONFIDENTIAL  
 THE INFORMATION CONTAINED IN THIS DRAWING IS THE SOLE PROPERTY OF PUMPONE ENVIRONMENTAL, LLC. ANY REPRODUCTION IN PART OR AS A WHOLE WITHOUT THE WRITTEN PERMISSION OF PUMPONE ENVIRONMENTAL, LLC IS PROHIBITED.

TITLE: BOM, WELL SEAL, 6" FERNCO, DUAL EXT., PASS THRU, EXPLODED VIEW  
 SIZE: DWG. NO. 3000069 REV 1  
 SCALE: 1:8 DO NOT SCALE DRAWING SHEET 1 OF 1

1 2 3 4 5 6 7 8

ITEM NO.	PartNo	Description	QTY.
1	1000371	ELBOW, 1", STAINLESS STEEL	1
2	1000403	CAM-LOCK, 1", TYP F, SS	1
3	1000857	HOSE BARB, CUSTOM, DISCHARGE, 1" NPT, SS	1



**PART NUMBER: 2000001**



**PUMPONE ENVIRONMENTAL, LLC**

PROPRIETARY AND CONFIDENTIAL  
THE INFORMATION CONTAINED IN THIS DRAWING IS THE SOLE PROPERTY OF PUMPONE ENVIRONMENTAL, LLC. ANY REUSE OR REPRODUCTION OF THIS DRAWING WITHOUT THE WRITTEN PERMISSION OF PUMPONE ENVIRONMENTAL, LLC IS PROHIBITED.

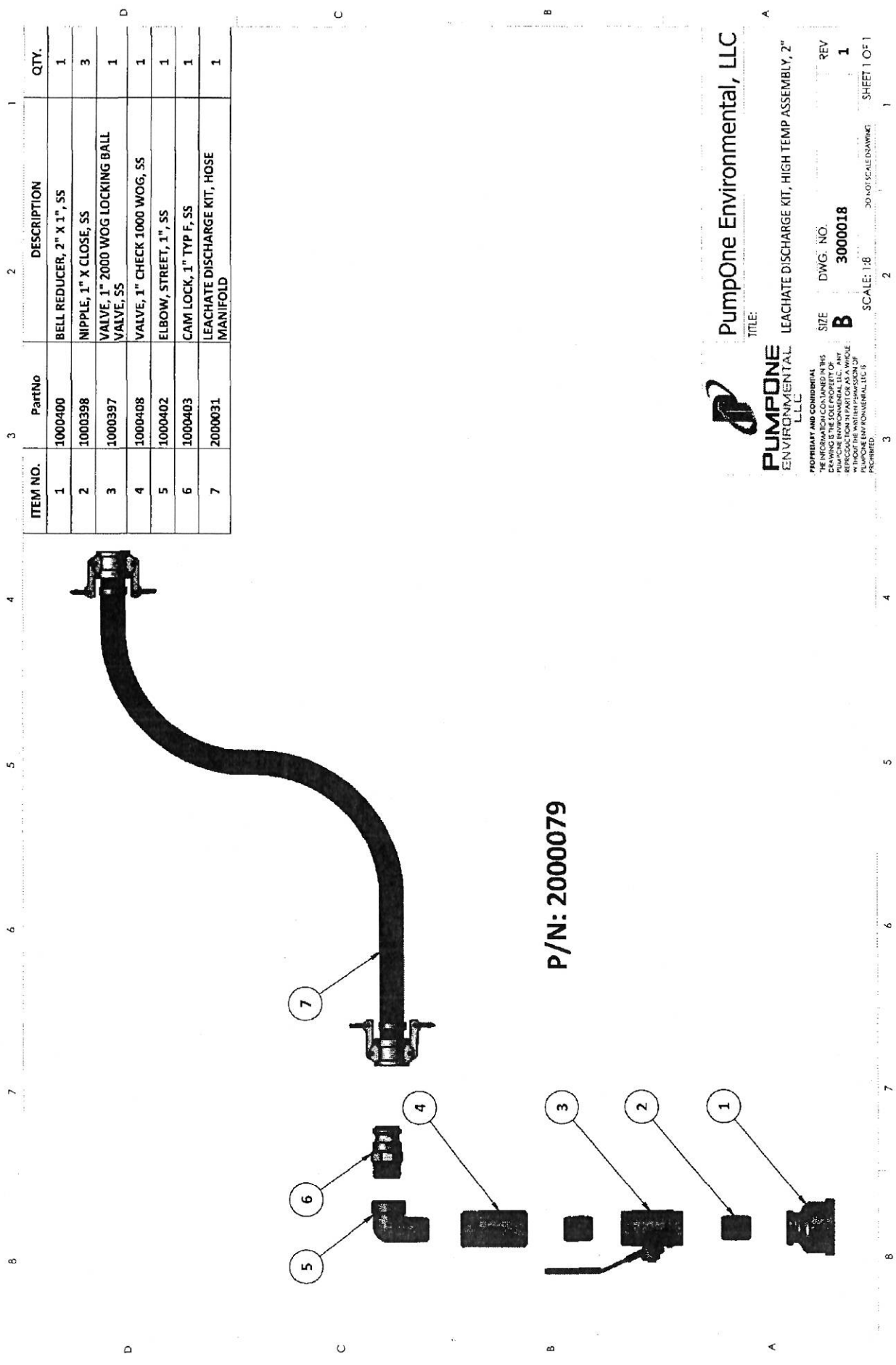
**PumpOne Environmental, LLC**

TITLE: **BOM, CAM LOCK & HOSE BARB ADAPTER FOR NYLON TUBE BUNDLE, EXPLODED VIEW**

SIZE: **B** DWG. NO. **3000094** REV **1**

SCALE: 1:2

SHEET 1 OF 1



P/N: 2000079

ITEM NO.	PartNo	DESCRIPTION	QTY.
1	1000400	BELL REDUCER, 2" X 1", SS	1
2	1000398	NIPPLE, 1" X CLOSE, SS	3
3	1000397	VALVE, 1" 2000 WOG LOCKING BALL VALVE, SS	1
4	1000408	VALVE, 1" CHECK 1000 WOG, SS	1
5	1000402	ELBOW, STREET, 1", SS	1
6	1000403	CAM LOCK, 1" TYP F, SS	1
7	2000031	LEACHATE DISCHARGE KIT, HOSE MANIFOLD	1

**PumpOne Environmental, LLC**

**PUMPONE ENVIRONMENTAL L.L.C.**

PROPERTY AND CONFIDENTIALITY NOTICE: THIS DRAWING IS THE SOLE PROPERTY OF PUMPONE ENVIRONMENTAL, LLC. ANY REPRODUCTION OR USE OF THIS DRAWING WITHOUT THE WRITTEN PERMISSION OF PUMPONE ENVIRONMENTAL, LLC IS PROHIBITED.

TITLE: LEACHATE DISCHARGE KIT, HIGH TEMP ASSEMBLY, 2"

SIZE: B

DWG. NO.: 3000018

SCALE: 1:8

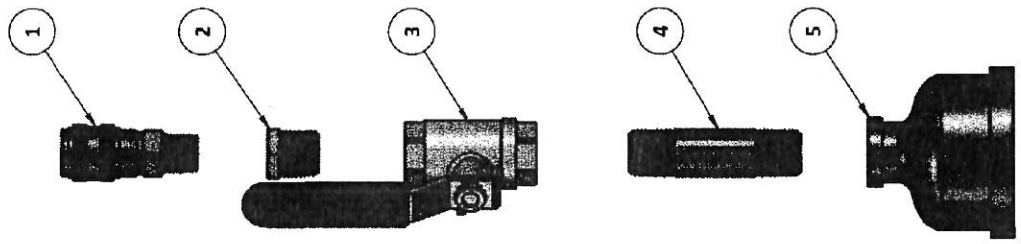
30 X 40 SCALE DRAWING

REV: 1

SHEET 1 OF 1

ITEM NO.	PartNo	DESCRIPTION	QTY.
1	1000357	QUICK CONNECT, FEMALE COUPLER X MNPT, BRASS	1
2	1000356	REDUCING BUSHING, 1/2" X 3/8" SS	1
3	1000355	VALVE, BALL, 1/2", SS	1
4	1000354	NIPPLE, 1/2" X 3" SS	1
5	1000353	BELL REDUCER, 2" X 1/2" SS	1

# PART NUMBER: 2000029



**PumpOne Environmental, LLC**  
 TITLE: AIR INTAKE KIT, 2" VALVE MANIFOLD, EXP VIEW, BOM

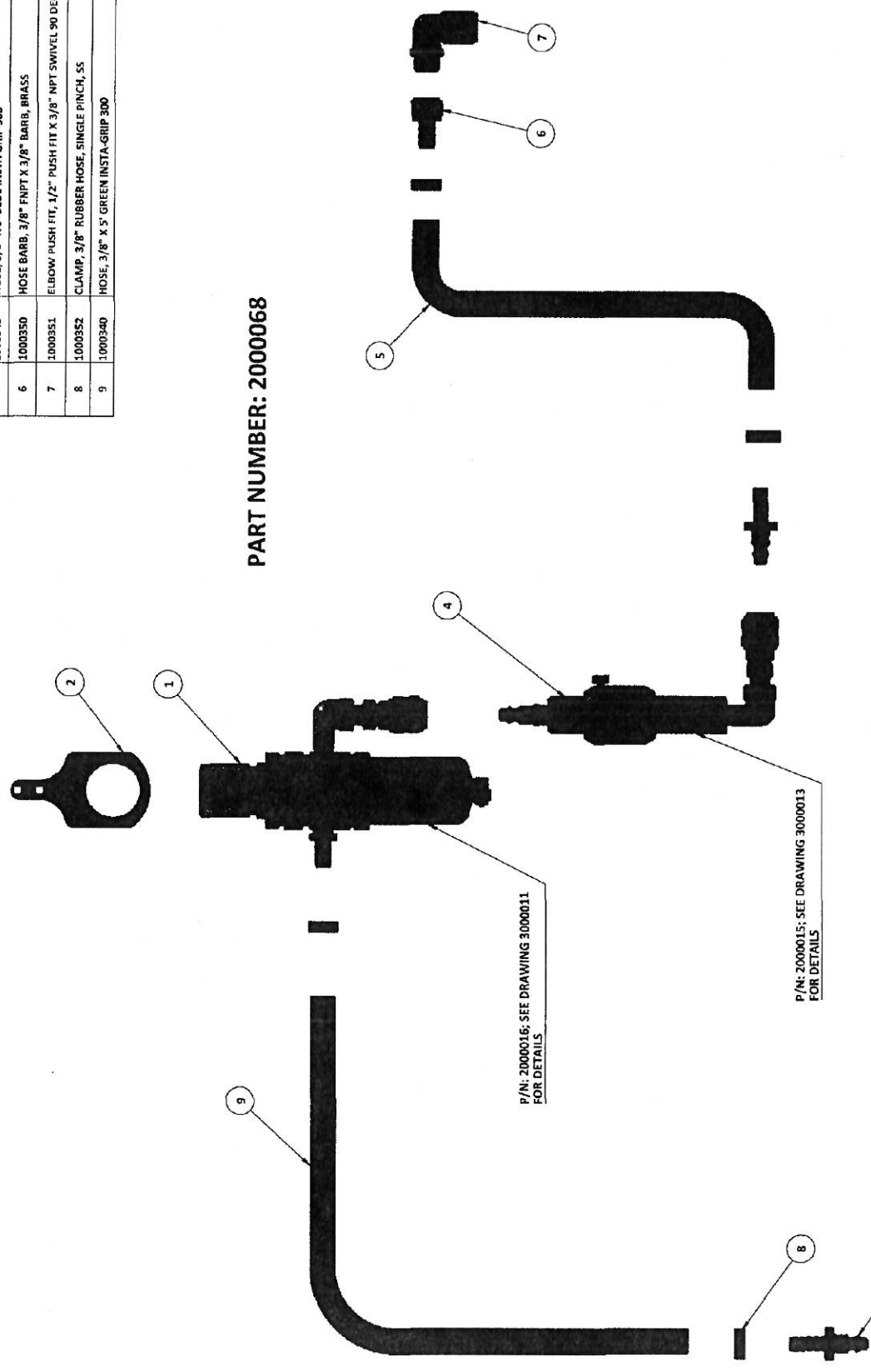
**PUMPONE ENVIRONMENTAL, LLC**  
 PROPRIETARY AND CONFIDENTIAL  
 THE INFORMATION CONTAINED IN THIS DRAWING IS THE PROPERTY OF PUMPONE ENVIRONMENTAL, LLC. ANY REPRODUCTION IN PART OR AS A WHOLE WITHOUT THE WRITTEN PERMISSION OF PUMPONE ENVIRONMENTAL, LLC IS PROHIBITED.

SIZE DWG. NO. REV  
**B** 3000023 1

SCALE: 1:2 DD-101 SCALE DRAWING SHEET 1 OF 1

ITEM NO.	PartNo	Description	QTY.
1	2000016	FILTER / REGULATOR, QUICK CONNECTS, ASSEMBLY	1
2	1000343	FILTER / REGULATOR, BRACKET, SS	1
3	1000339	QUICK CONNECT, ISO 6150B BRASS MALE COUPLER X BARB	2
4	2000015	PULSE COUNTER, MECHANICAL AIRPULSE, QUICK CONNECTS	1
5	1000349	HOSE, 3/8" X 3' BLUE INSTA GRIP 300	1
6	1000350	HOSE BARB, 3/8" FNPT X 3/8" BARB, BRASS	1
7	1000351	ELBOW PUSH FIT, 1/2" PUSH FIT X 3/8" NPT SWIVEL 90 DEG. ELBOW	1
8	1000352	CLAMP, 3/8" RUBBER HOSE, SINGLE PINCH, SS	4
9	1000340	HOSE, 3/8" X 5' GREEN INSTA-GRIP 300	1

PART NUMBER: 2000068



**PumpOne Environmental, LLC**

**PUMPHONE ENVIRONMENTAL, LLC**

PROPERTY AND CONFIDENTIAL INFORMATION. THIS DRAWING IS THE SOLE PROPERTY OF PUMPHONE ENVIRONMENTAL, LLC. NO REPRODUCTION, PARTIAL OR FULL, WITHOUT THE WRITTEN PERMISSION OF PUMPHONE ENVIRONMENTAL, LLC.

TITLE: AIR INTAKE KIT, PUSH FIT CONNECTION, ASSEMBLY, EXPLODED VIEW, BOM

REV: 1

DWG. NO: 3000010

SCALE: 1:15

DO NOT SCALE DRAWING. SHEET 1 OF 1