



PRAIRIE MEADOWS SUBDIVISION

TOPOGRAPHY & DRAINAGE PLAN

JONESBORO, AR

DATE: 9/15/06
REV: 12/12/06
2/28/07
3/6/07

DRAWN BY: BGM

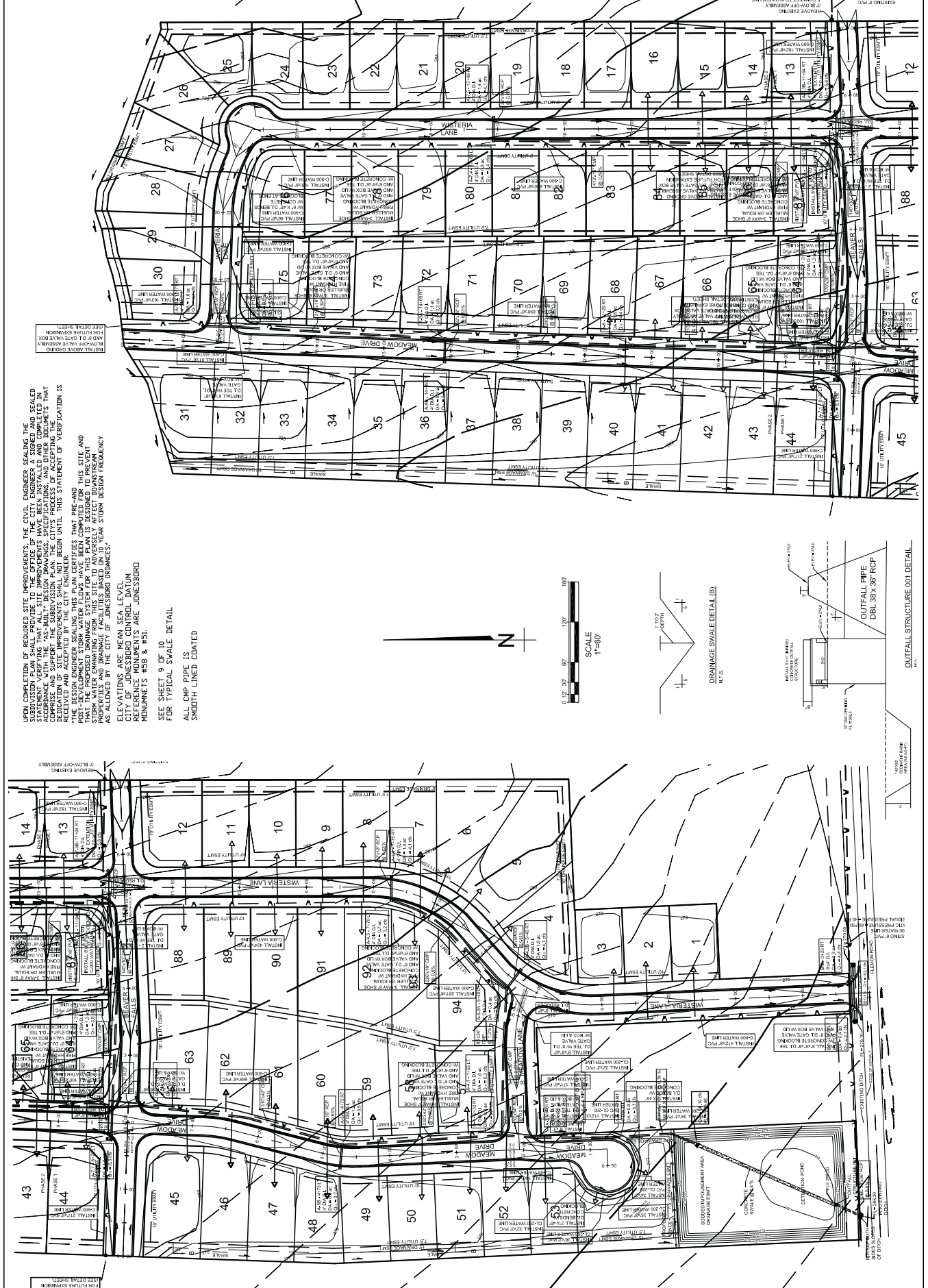
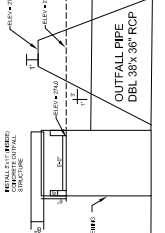
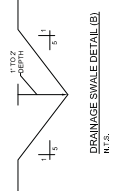
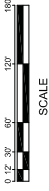
CARLOS WOOD, P.E.
ENGINEERING CONSULTANT
2704 L.S. CULBERHOUSE
PHONES: (870) 974-3335
EMAIL: WOODENR@SBCGLOBAL.NET



UPON COMPLETION OF REQUIRED SITE IMPROVEMENTS, THE CIVIL ENGINEER SEALING THIS SUBDIVISION PLAN SHALL PROVIDE TO THE OFFICE OF THE CITY ENGINEER A STORED AND SEALED COPY OF THIS PLAN TO BE FILED WITH THE CITY ENGINEER'S OFFICE. THIS PLAN SHALL BE SUBJECT TO THE CITY ENGINEER'S REVIEW AND APPROVAL. THE CITY ENGINEER'S REVIEW AND APPROVAL SHALL BE LIMITED TO THE TECHNICAL ASPECTS OF THE PLAN AND SHALL NOT BE A GUARANTEE OF THE ACCURACY OF THE INFORMATION PROVIDED HEREON. THE CITY ENGINEER'S REVIEW AND APPROVAL SHALL NOT BE A GUARANTEE OF THE ACCURACY OF THE INFORMATION PROVIDED HEREON. THE CITY ENGINEER'S REVIEW AND APPROVAL SHALL NOT BE A GUARANTEE OF THE ACCURACY OF THE INFORMATION PROVIDED HEREON.

ELEVATIONS ARE MEAN SEA LEVEL
CITY OF JONESBORO CONTROL DATUM
MANNING'S N58 & N45.

SEE SHEET 9 OF 10
FOR TYPICAL SWALE DETAIL
ALL CMP PIPE IS
SMOOTH LINED COATED



INSTALL ABOVE GROUND
BACKFLOW VALVE ASSEMBLY
FOR FUTURE EXPANSION

EXISTING 8\"/>