



June 2, 2014

Mr. Brandon Wood, P.E.  
Civil Engineering  
112 CR 7625  
Brookland, AR 72417

RE: DG Brookland, LLC, Replat of Spring Valley Subdivision Replat Lots 3, 4, & 7,  
Lots 2 & 8 of Part of Spring Valley Subdivision  
Utility Easement Abandonment Concurrence Request

Dear Mr. Wood:

The City of Jonesboro Engineering Department concurs with the abandonment of a twenty (20') feet utility easement across lots 2 & 3 and a ten (10') feet utility easement along and parallel to the east property line of lot 3, of the DG Brookland, LLC Replat of Lots 3, 4, & 7 of Spring Valley Subdivision in the City of Jonesboro, recorded in the Circuit Clerk's office of Craighead County, Book 'C' Page 247, as shown on the attached plat.

Also, the abandonment of a ten (10') feet utility easement along and parallel to the west and the north property lines of lot 2 of Replat of Part of Spring Valley Subdivision in the City of Jonesboro, recorded in the Circuit Clerk's office of Craighead County, Book 'A' Page 25, as shown on the attached plat.

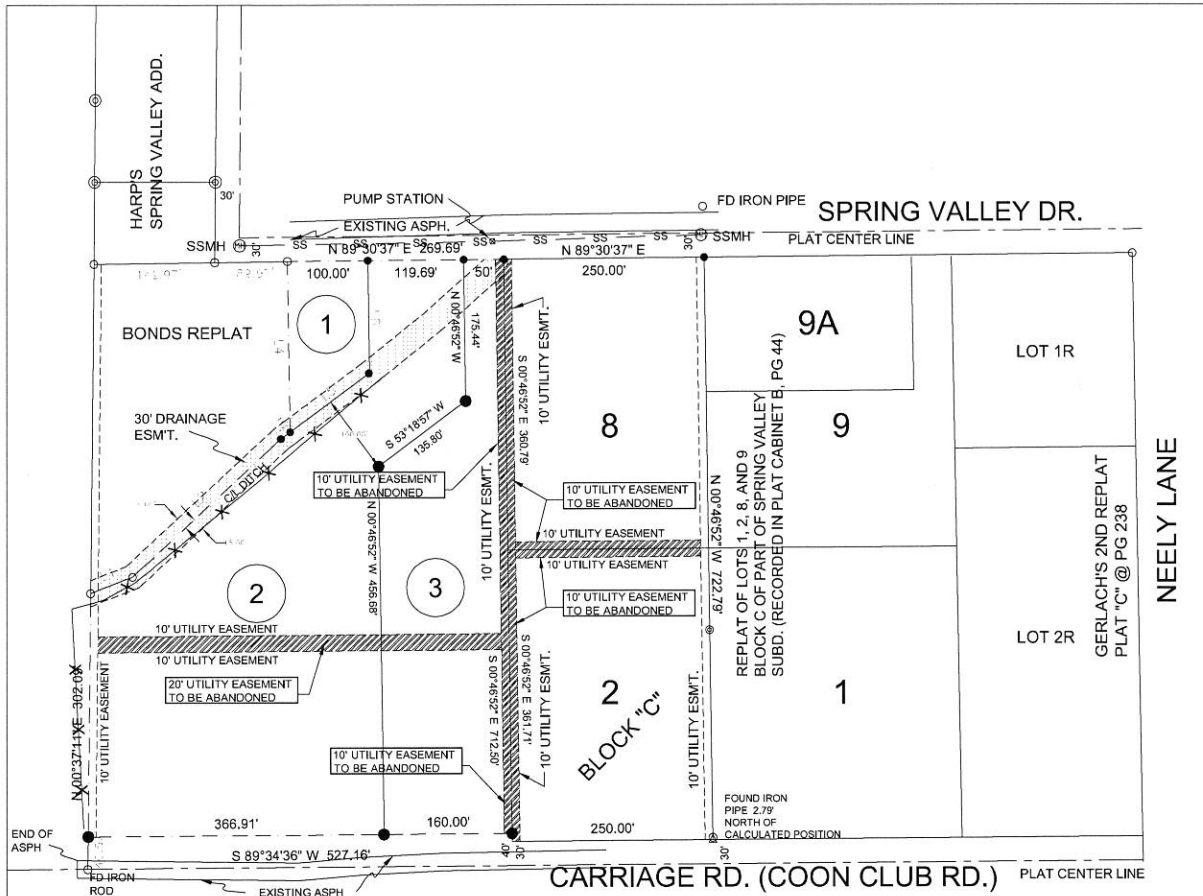
Also, the abandonment of a ten (10') feet utility easement along and parallel to the west, and the south property lines of lot 8 of Replat of Part of Spring Valley Subdivision in the City of Jonesboro, recorded in the Circuit Clerk's office of Craighead County, Book 'A' Page 25, as shown on the attached plat.

If you have any questions or comments please feel free to contact me at the above referenced number.

Sincerely,

Craig Light, PE CFM  
City Engineer

Otis Spriggs, AICP  
Planning Director



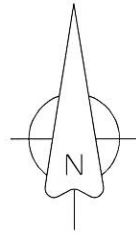
A TWENTY (20') FEET UTILITY EASEMENT ACROSS LOTS 2 & 3 AND A TEN (10') FEET UTILITY EASEMENT ALONG AND PARALLEL TO THE EAST PROPERTY LINE OF LOT 3, OF THE DG BROOKLAND, LLC REPLAT OF LOTS 3, 4, & 7 OF SPRING VALLEY SUBDIVISION IN THE CITY OF JONESBORO, RECORDED IN THE CIRCUIT CLERK'S OFFICE OF CRAIGHEAD COUNTY, BOOK 'C' PAGE 247

A TEN (10') FEET UTILITY EASEMENT ALONG AND PARALLEL TO THE WEST AND THE NORTH PROPERTY LINES OF LOT 2 OF REPLAT OF PART OF SPRING VALLEY SUBDIVISION IN THE CITY OF JONESBORO, RECORDED IN THE CIRCUIT CLERK'S OFFICE OF CRAIGHEAD COUNTY, BOOK 'A' PAGE 25

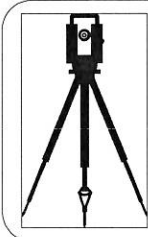
TEN (10') FEET UTILITY EASEMENT ALONG AND PARALLEL TO THE WEST, AND THE SOUTH PROPERTY LINES OF LOT 8 OF REPLAT OF PART OF SPRING VALLEY SUBDIVISION IN THE CITY OF JONESBORO, RECORDED IN THE CIRCUIT CLERK'S OFFICE OF CRAIGHEAD COUNTY, BOOK 'A' PAGE 25

**SURVEYOR'S CERTIFICATION:**  
 THIS IS TO CERTIFY I HAVE ON THIS DATE SURVEYED THE ABOVE DESCRIBED PROPERTY IN ACCORDANCE WITH MONUMENTS FOUND THIS PLAT CONFORMS TO THAT SURVEYED.

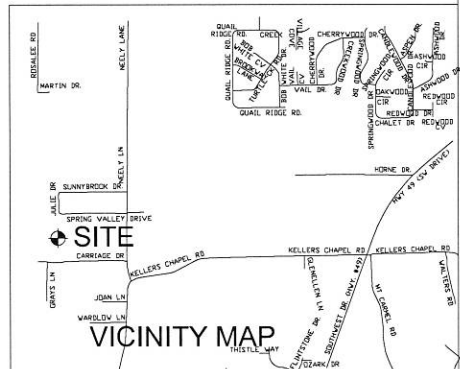
H&S HIME PROFESSIONAL SURVEYING SERVICES  
 2619 CARAWAY RD. STE. "D"  
 JONESBORO, ARKANSAS 72401



BEARINGS ARE SPC GRID  
 AS PER GPS OBSERVATION  
 CONVERGENCE ANGLE 0°54'33.91"



H&S HIME PROFESSIONAL SURVEYING SERVICES  
 2619 CARAWAY RD - STE. "D"  
 JONESBORO, ARKANSAS 72401  
 PHONE: 870-972-1288  
 FAX: 870-972-1011  
 E-MAIL: hshime\_butch@yahoo.com



**ABANDONMENT PLAT**

drawn: <b>B. WOOD</b>	UTILITY EASEMENTS TO BE ABANDONED ON LOTS 2 & 3 OF DG BROOKLAND, LLC REPLAT OF LOTS 3, 4, & 7 OF SPRING VALLEY SUBDIVISION & LOTS 2 & 8 OF SPRING VALLEY SUBDIVISION
date: 4-10-2014	
scale: 1"=150'	cleint: DG BROOKLAND, LLC