

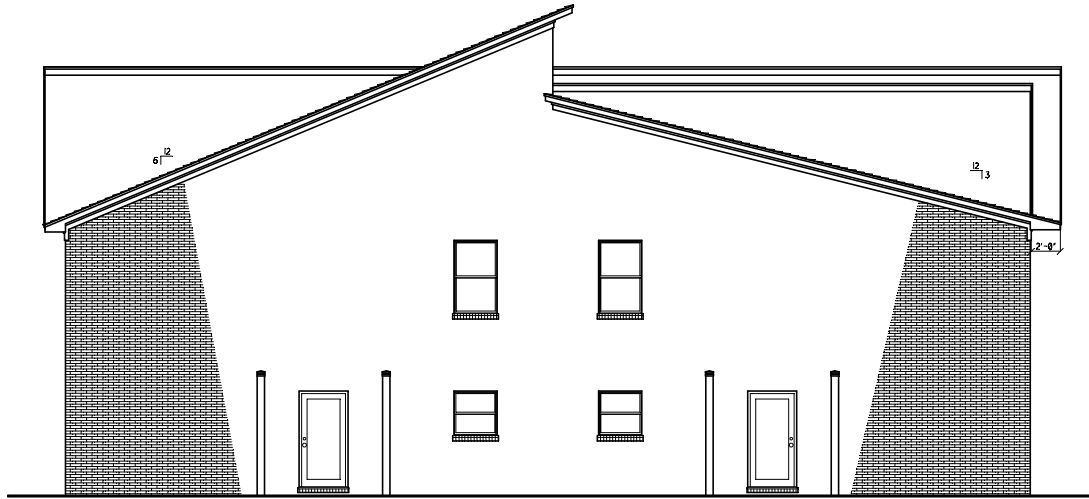
REVISIONS	BY

24/36

A NEW 4 PLEX PROJECT FOR
McLennan Investments
ELEVATIONS

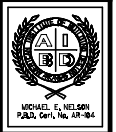


FRONT ELEVATION



LEFT ELEVATION

NOTICE DUTY OF COOPERATION
© 2024 Michael E. Nelson Designs, LLC
MICHAEL E. NELSON DESIGNS, LLC or Michael E. Nelson guarantees no WARRANTY for any HOME constructed from this plan. Release of these plans contemplates further cooperation among the owner, the contractor and the designer. Design and construction are complete, although the designer and the contractor performed their services with due care and diligence, they cannot guarantee perfection. Completion is imperfect and every contingency cannot be anticipated. Any ambiguity or discrepancy discovered by the use of these plans shall be reported immediately to the designer. Failure to notify the designer constitutes misunderstanding and increases construction costs. A failure to cooperate by a staple notice to the designer shall relieve the designer from responsibility for all consequences. Changes made from the plans without the consent of the designer are unauthorized and shall relieve the designer of responsibility for all consequences arising out of such changes. Only qualified Designer, Architect, Contractor or Structural Engineer should attempt to modify any portion of this design. Written dimensions on these drawings shall have precedence over scaled dimensions; contractors shall verify and be responsible for all dimensions and conditions on the job. This office must be notified of any variations from the dimensions and conditions shown by these drawings. Shop details must be submitted to this office for approval before proceeding with fabrication or construction.



MEN By **Michael E. Nelson**
DESIGNS A Signature Series of Home Plans
NATIONALLY PUBLISHED
ALTD & CPBD
NATIONAL BULK & PLAN REPRODUCTION COMPANY

DATE	
SCALE	1/4" = 1'-0"
BUILDER	
JOB	MENCI48-20
DRAWN BY	MM

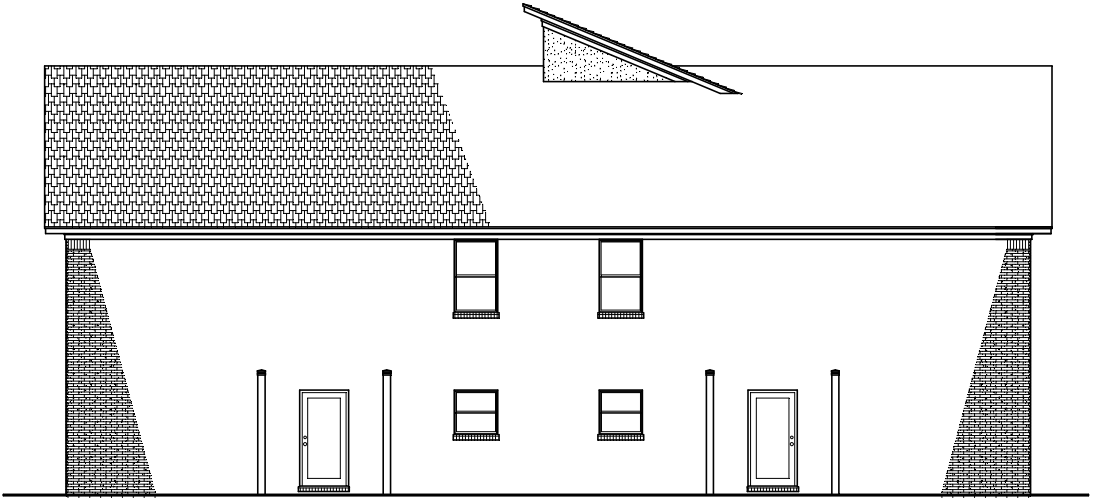
REVISIONS	BY

24/36

A NEW 4 PLEX PROJECT FOR
McLennan Investments
ELEVATIONS



REAR ELEVATION



RIGHT ELEVATION

NOTICE DUTY OF COOPERATION
© 2011 Michael E. Nelson Designs, LLC
MICHAEL E. NELSON DESIGNS, LLC or Michael E. Nelson shall retain the "AIA/CES" for any HOME constructed from this plan. Release of these plans contemplates further cooperation among the owner, the contractor and the designer. Design and construction are complete, although the designer and the contractor performed their services with due care and diligence, they cannot guarantee perfection. Construction is imperfect and every contingency cannot be anticipated. Any ambiguity or discrepancy discovered by the use of these plans shall be reported immediately to the designer. Failure to notify the designer constitutes misrepresentation and increases construction costs. A failure to cooperate by a single party shall relieve the designer from responsibility for all consequences. Changes made from the plans without the consent of the designer are unauthorized and shall relieve the designer of responsibility for all consequences arising out of such changes. Only qualified Designer, Architect, Contractor or Structural Engineer should attempt to modify any portion of this design. Written dimensions on these drawings shall have precedence over scaled dimensions; contractors shall verify and be responsible for all dimensions and conditions on the job. This office must be notified of any variations from the dimensions and conditions shown by these drawings. Shop details must be submitted to this office for approval before proceeding with fabrication or construction.



MEN By Michael E. Nelson
DESIGNS A Signature Series of Home Plans
NATIONALLY PUBLISHED
ALTD & CPBD
NATIONAL DESIGN & PLAN ADMINISTRATION COMPANY

DATE	
SCALE	1/4" = 1'-0"
BUILDER	
JOB	0000-00
DRAWN BY	

