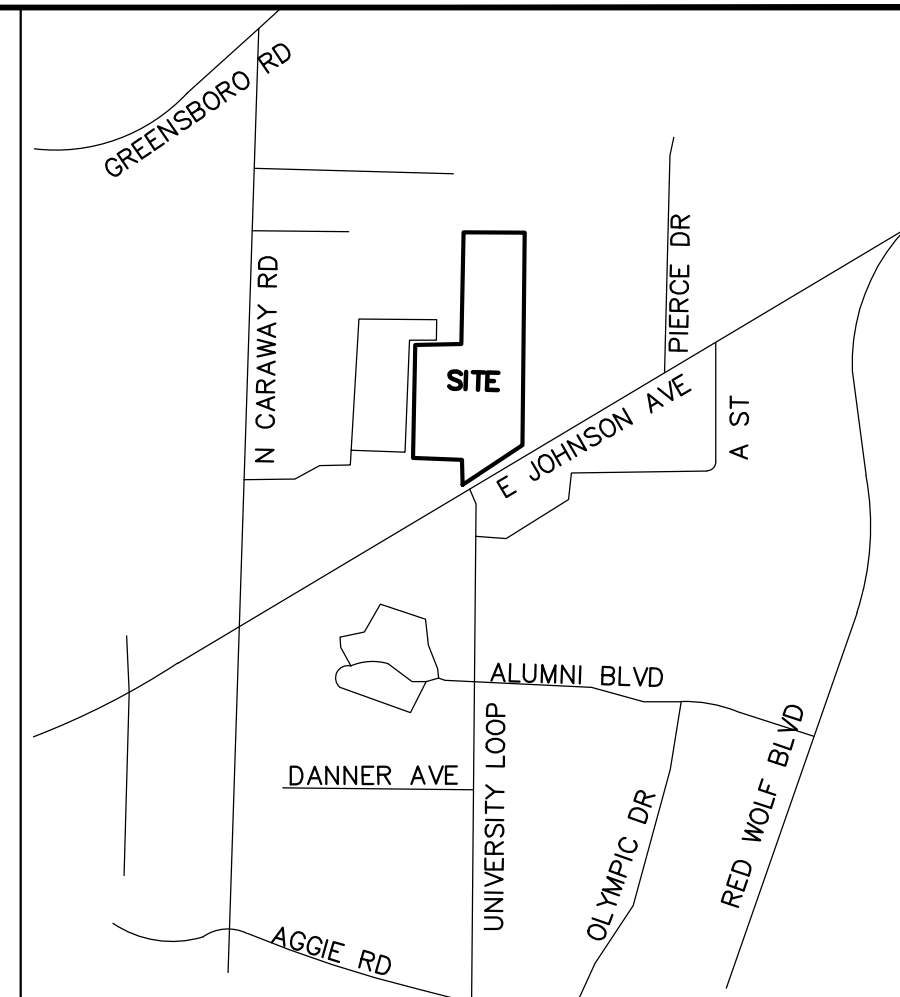
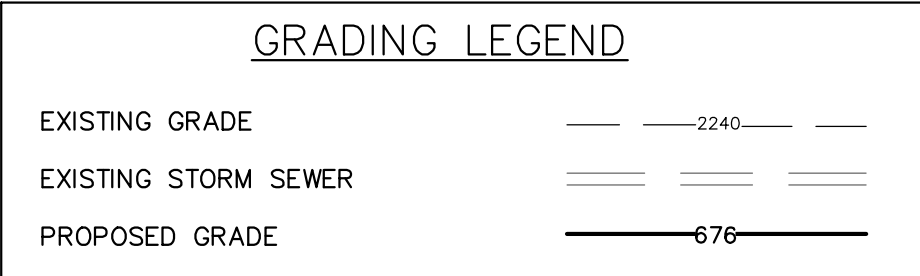
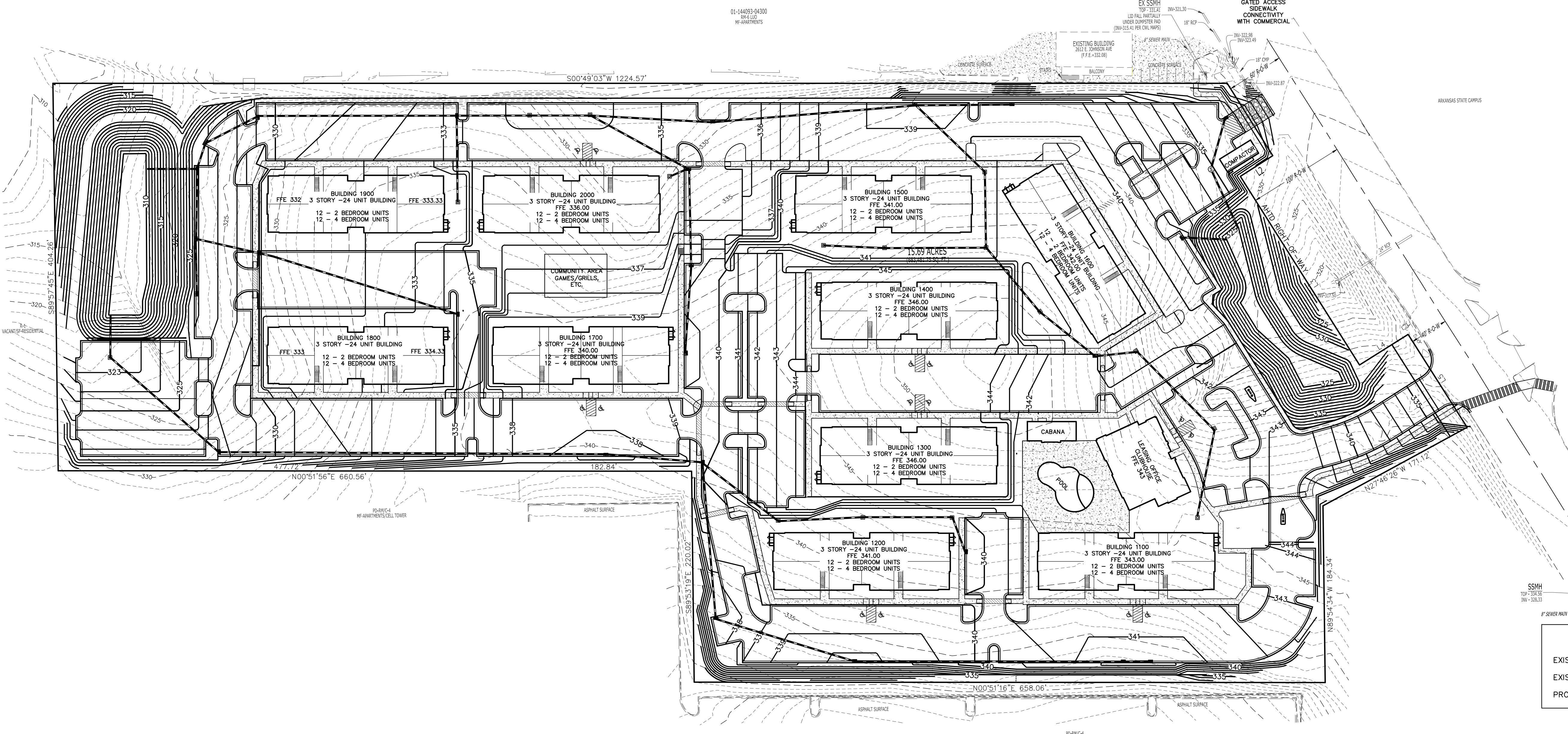


DIMENSION NOTES:

1. ALL DIMENSIONS ARE FROM THE FACE OF CURB UNLESS OTHERWISE NOTED.
2. ALL CURB RADII ARE 3' UNLESS OTHERWISE NOTED
3. ALL WALLS ARE SHOWN AS CENTER TOP OF WALL. BOTTOM OF WALL SHALL BATTER AWAY.
4. ALL SPOT GRADES ARE LABELED AT BOTTOM OF CURB AND OR ASPHALT GRADE UNLESS OTHERWISE NOTED.



VICINITY SKETCH
(NOT TO SCALE)



ALL STORM SEWER PIPES TO HAVE WATERTIGHT GASKETS

CONSTRUCTION STAKING:

THE CONTRACTOR SHALL COORDINATE WITH THE ENGINEER OF RECORD FOR A DIGITAL STAKING PLAN TO ESTABLISH COMPLETE HORIZONTAL AND VERTICAL CONTROL. THE CONTRACTOR IS RESPONSIBLE FOR SURVEY STAKEOUT OF ALL IMPROVEMENTS. DISCREPANCIES BETWEEN THE PLANS, CONSTRUCTION STAKES, AND FIELD CONDITIONS SHALL BE REPORTED TO THE ENGINEER OF RECORD IMMEDIATELY FOR RESOLUTION PRIOR TO INSTALLATION OF PROPOSED IMPROVEMENTS.

GENERAL NOTES:

1. BOUNDARY AND TOPOGRAPHIC INFORMATION WAS OBTAINED FROM RIDGE SURVEYING & CONSULTING PLLC, DATED 12/2/2015.
2. CONTRACTOR TO VERIFY ALL DIMENSIONS AND EXISTING FEATURES PRIOR TO CONSTRUCTION.
3. INVERTS FOR EXISTING UTILITIES SHALL BE VERIFIED BY THE CONTRACTOR PRIOR TO CONSTRUCTION.
4. MATERIALS AND WORKMANSHIP TO CONFORM WITH STANDARDS AND SPECIFICATIONS OF LOCAL JURISDICTIONAL AUTHORITIES.
5. POWER, PHONE, CABLE AND GAS SERVICE INSTALLATIONS SHALL BE COORDINATED WITH LOCAL UTILITY PROVIDERS.

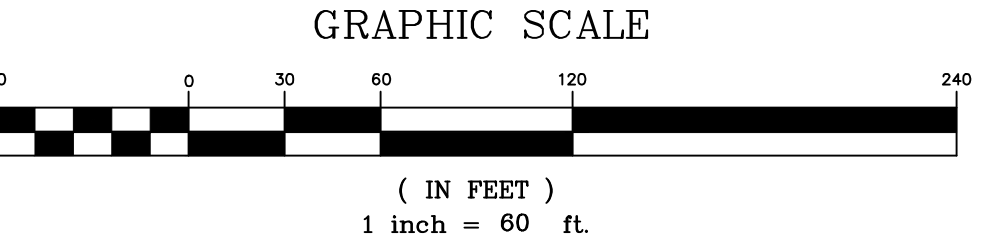
GRADING NOTES:

1. ALL FILL SHALL BE PLACED IN LIFTS UNDER THE DIRECTION OF INDEPENDENT SOILS TESTING AGENCY.
2. ALL STORM SEWER 15" AND LARGER MUST BE CLASS III RCP EXCEPT AS OTHERWISE NOTED.
3. ALL STORM SEWER SHALL BE INSTALLED AND BACKFILLED UNDER THE SUPERVISION AND TESTING OF AN INDEPENDENT SOILS TESTING AGENCY.
4. IMPORTED FILL SHALL BE SUITABLE STRUCTURAL FILL AND APPROVED FOR PLACEMENT BY THE GEOTECHNICAL ENGINEER
5. ANY SEDIMENT TRACKED ONTO STREETS WITHIN THE DEVELOPMENT MUST BE CLEANED DAILY.
6. CONTRACTOR TO ENSURE THAT ALL ROOF DRAINAGE DISCHARGES IN A MANNER SO THAT IT IS ROUTED THROUGH THE PROPOSED BMP.
7. CONTRACTOR SHALL ENSURE POSITIVE DRAINAGE SO THAT RUNOFF WILL FLOW BY GRAVITY AWAY FROM BUILDINGS AND ACROSS SWALES, DITCHES OR OVERLAND SHEET FLOW.
8. STORMWATER RCP SHALL BE WATER-TIGHT O-RING GASKETED, WITH A MINIMUM PRESSURE RATING OF 10 PSI.
9. HC PARKING AREAS AND RAMPS SHALL BE ADA COMPLIANT. MAXIMUM SLOPE IN ANY DIRECTION FOR THE HC PARKING IS 2%.

PRELIMINARY
JANUARY 25, 2016
FOR REVIEW
ONLY
NOT FOR
CONSTRUCTION



REVISIONS		
NO.	BY	DATE



H HAGEN ENGINEERING, PA
3859 BATTLEGROUND AVE, SUITE 300
GREENSBORO, NC 27410
PHONE (336) 404-9796 FAX (336) 899-7890
bhagen@hagen-eng.com

SKETCH GRADING PLAN
STADIUM VIEW
2510 E JOHNSON AVE.
JONESBORO
CRAIGHEAD COUNTY, ARKANSAS