

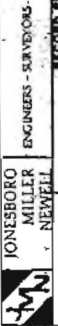
RidgePointe

Country Club

PHASE III REVISED

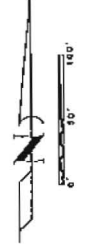
JONESBORO, ARKANSAS

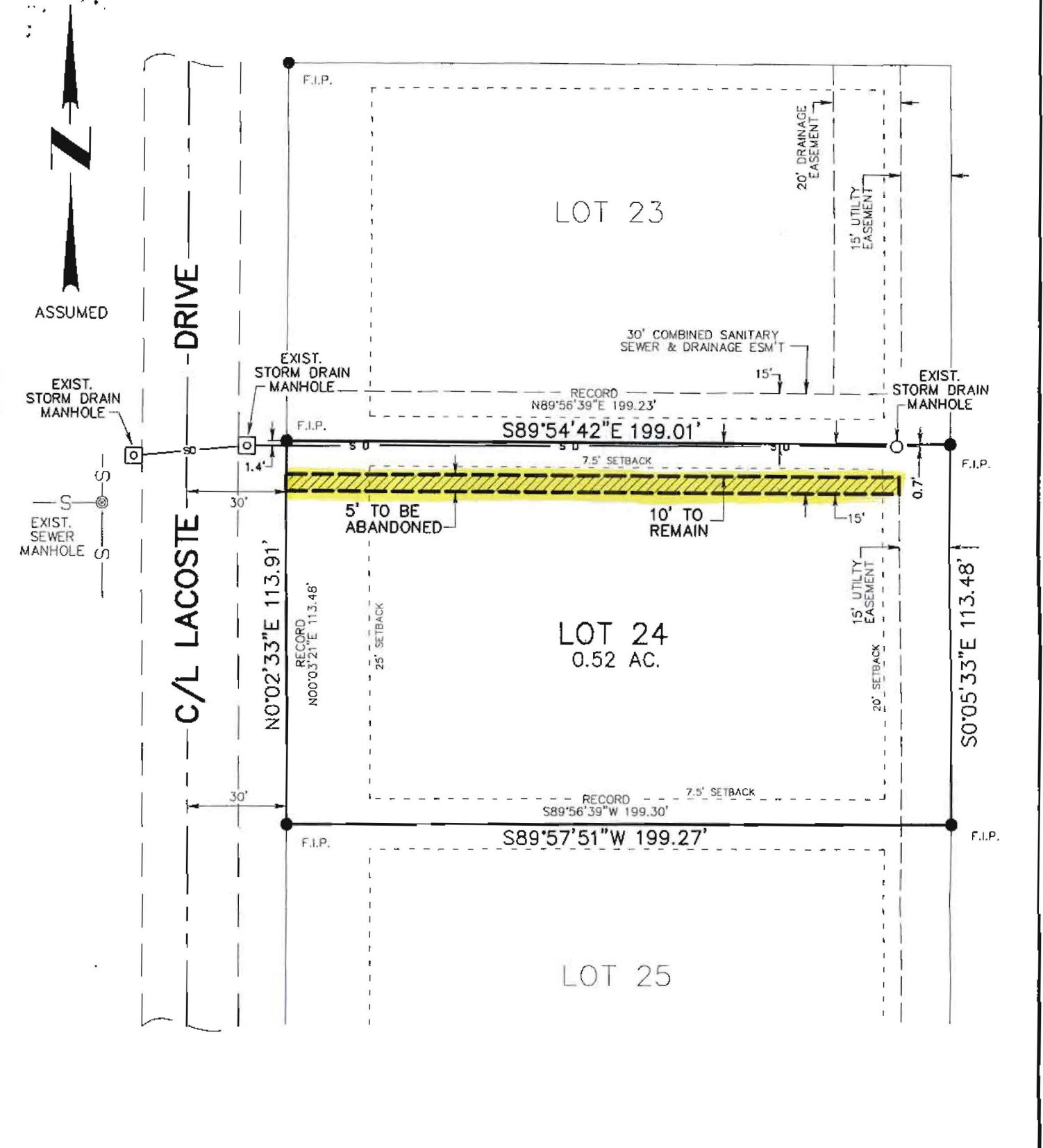
REVISIONS:
 REVISION 1: 11-2-83
 REVISION 2: 11-2-83



JONESBORO MILLER ENGINEERS-SURVEYORS, INC.
 MILLER NEVILL
 SECOND FLOOR
 JONESBORO, ARKANSAS
 MR. CARROLL MALMQUIST
 MR. COLLETT MALMQUIST

DATE	BY	REVISION	DESCRIPTION
11-2-83	ML	1	PRELIMINARY
11-2-83	ML	2	REVISED
11-2-83	ML	3	REVISED
11-2-83	ML	4	REVISED
11-2-83	ML	5	REVISED
11-2-83	ML	6	REVISED
11-2-83	ML	7	REVISED
11-2-83	ML	8	REVISED
11-2-83	ML	9	REVISED
11-2-83	ML	10	REVISED
11-2-83	ML	11	REVISED
11-2-83	ML	12	REVISED
11-2-83	ML	13	REVISED
11-2-83	ML	14	REVISED
11-2-83	ML	15	REVISED
11-2-83	ML	16	REVISED
11-2-83	ML	17	REVISED
11-2-83	ML	18	REVISED
11-2-83	ML	19	REVISED
11-2-83	ML	20	REVISED
11-2-83	ML	21	REVISED
11-2-83	ML	22	REVISED
11-2-83	ML	23	REVISED
11-2-83	ML	24	REVISED
11-2-83	ML	25	REVISED
11-2-83	ML	26	REVISED
11-2-83	ML	27	REVISED
11-2-83	ML	28	REVISED
11-2-83	ML	29	REVISED
11-2-83	ML	30	REVISED
11-2-83	ML	31	REVISED





THE SOUTH 5.00' OF THE NORTH 15.00' OF LOT 24, BLOCK B, RIDGE POINTE, PHASE III REVISED, OF JONESBORO, ARKANSAS, LYING WEST OF A 15.00' UTILITY EASEMENT ALONG THE EAST LINE OF AFORESAID LOT 24.



EASEMENT ABANDONMENT

LOT 24, BLOCK B
RIDGEPOINTE, PHASE III REVISED
JONESBORO, ARKANSAS

HAYWOOD, KENWARD, BARE & ASSOCIATES, INC.
CIVIL ENGINEERING - SURVEYING - PLANNING
3301 E. HIGHLAND DRIVE
JONESBORO, ARKANSAS 72401
TEL 870-932-2019 FAX 870-932-1076

REVISIONS

DATE	BY	DESCRIPTION

DRAWN BY	SHEET
J.H.B.	1 OF 1
DATE	SCALE
06/18/03	1"=40'
JOB NO.	DRAWING NO.
100412	R-173

THIS IS NOT A
BOUNDARY SURVEY

CLIENT
JOHN LOVELESS