



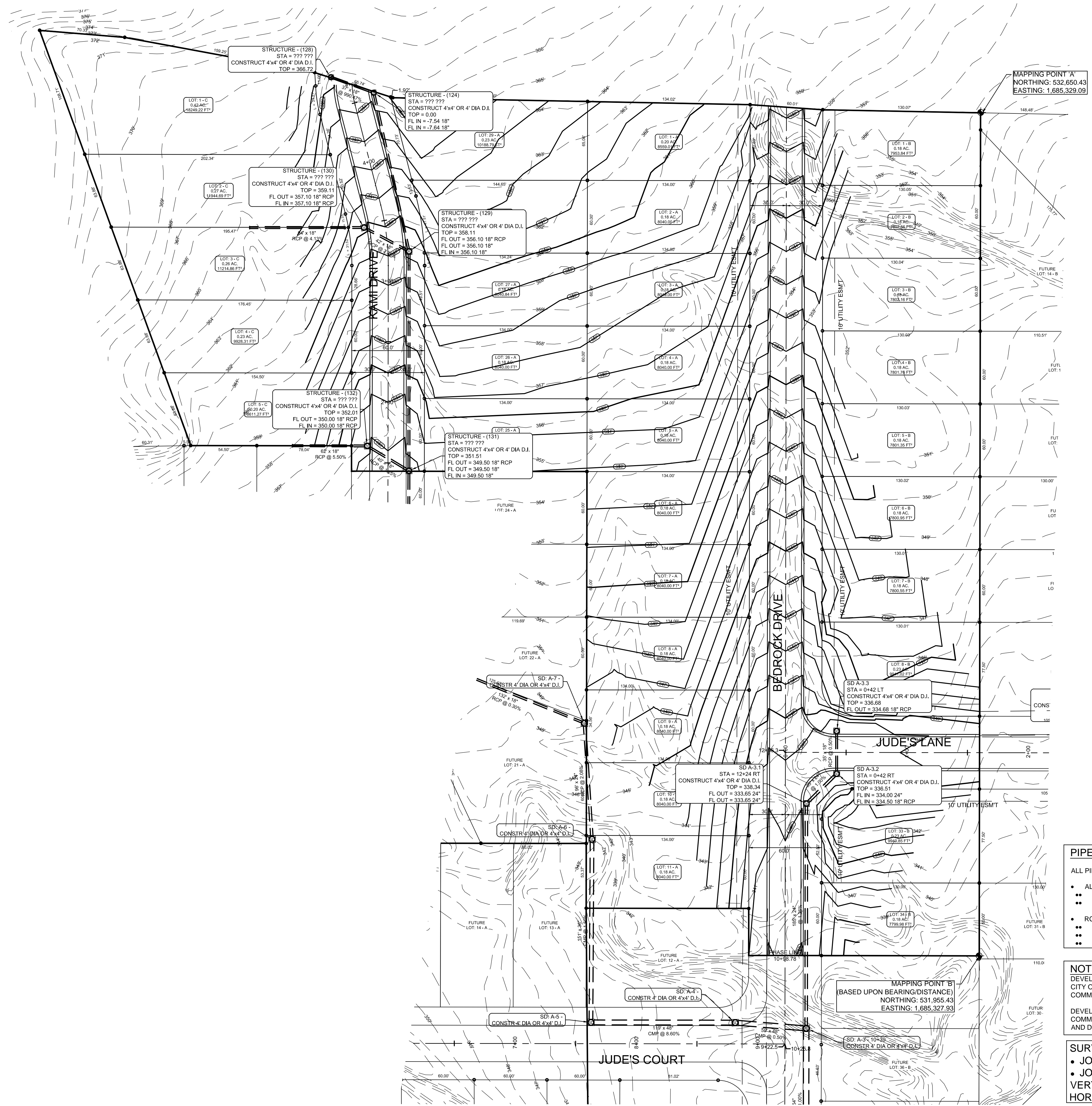
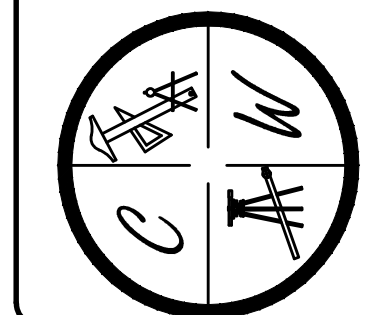
JUDE'S CROSSING PHASE II

JONESBORO, AR
TOPOGRAPHY &
DRAINAGE PLAN

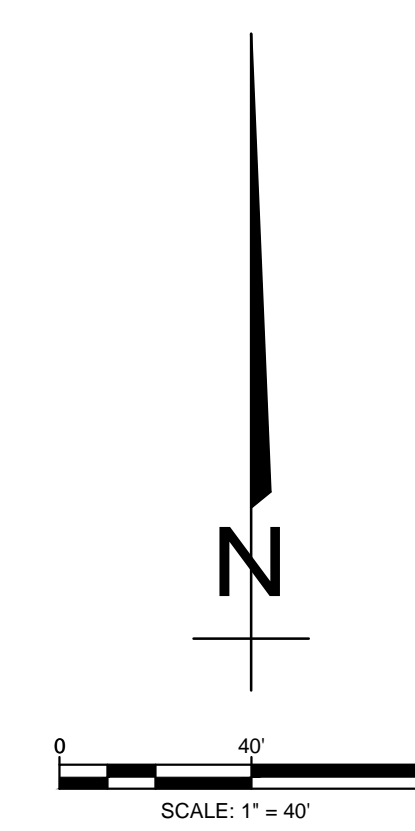
DATE: 2/24/15
REV: 4/14/15

DRAWN BY: BGW

CARLOS WOOD, P.E.
ENGINEERING CONSULTANT
122 CR 375
BONO, AR 72416
PHONE/FAX: (870) 972-8335
EMAIL: WOODENGR@SBCGLOBAL.NET
WEBSITE: WWW.WOODENGR.COM



MAPPING POINT 'A'
NORTHING: 532,650.43
EASTING: 1,685,329.09



LEGEND	
	CURB
	EXISTING CONTOUR
	PROPOSED CONTOUR
	STORM DRAIN INLET
	STORM DRAIN PIPE
	BENCHMARK

- PIPE NOTE:**
- ALL PIPE SHALL MEET THE FOLLOWING STANDARDS.
- ALUMINIZED STEEL TYPE 2 STEEL PIPE
 - ASTM A-929
 - ASTM A-760
 - RCP CLASS III OR CLASS IV
 - ASTM C-76
 - ASTM C-508
 - ASTM C-507

NOTE:

DEVELOPER SHALL OBTAIN GRADING PERMIT FROM THE CITY OF JONESBORO ENGINEERING DEPARTMENT PRIOR TO COMMENCING EARTHWORK AND/OR CLEARING OPERATIONS.

DEVELOPER SHALL OBTAIN REQUIRED ADEQ PERMIT PRIOR TO COMMENCING WORK ON THE SITE. PREPARE A SWPP PLAN, AND DISPLAY THEM FOR PUBLIC ACCESS AT THE SITE.

- SURVEY CONTROL REFERENCE MARKS:**
- JONESBORO MONUMENT # 89
 - JONESBORO MONUMENT # 43
- VERTICAL CONTROL IS NAVD 88
HORIZONTAL CONTROL IS NAD 83