

PLAT OF SURVEY

FISHER ARNOLD  
ENGINEERING INTEGRATION

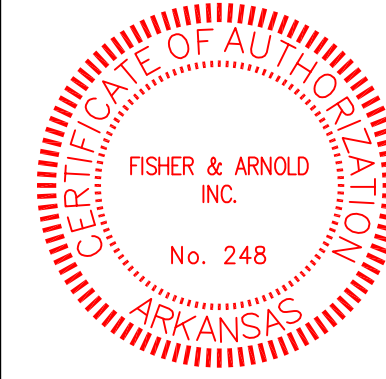
1801 Latourrette Drive | Jonesboro, Arkansas 72404  
870.932.2019 | Fax: 870.932.1076 | www.fisherarnold.com

PLAT OF SURVEY

R & R REAL ESTATE INVESTMENTS, LLC  
SECTION 36, TOWNSHIP 14 NORTH, RANGE 3 EAST  
JONESBORO, ARKANSAS



JEFF WAYNE HARLAN - LAND SURVEYOR  
ARKANSAS #1538



FISHER & ARNOLD, INC.  
ARKANSAS - 248

CLIENT:  
R & R E. INVESTMENTS, LLC

COPYRIGHT 2017, ALL RIGHTS RESERVED

REVISIONS

DATE	BY	DESCRIPTION

PROJECT NO.

JB10345-200 Sartin

DRAWN BY  
JWH

CHECKED BY  
TGB

SHEET  
1 OF 1

SCALE  
1"=100'

DATE  
04/22/2017

DRAWING NO.  
55-92