



To: Carlos Wood, P. E.
Engineering Consultant

From: Suddenlink Communications, Inc.

Date: December 12, 2013

Re: Drainage Easement Abandonment

Suddenlink Communications, Inc. has no objection to the abandonment of the ten feet (10') drainage easement on the north property line of lot 20 and the 10 feet (10') drainage easement on the south property line of lot 21, Block 'D' Bridger Place Phase II Subdivision, located in Jonesboro, Craighead County, Arkansas, provided that the existing utility easements are retained and maintained.

Respectfully,

Joey Roach

Construction Planner
Suddenlink Communications, Inc.



Owned by the Citizens of Jonesboro

December 3, 2013

City of Jonesboro
P.O. Box 1845
Jonesboro, AR. 72403
Attn: Otis Spriggs

Re: Drainage Easement Abandonment
Lots 20 & 21 Block D,
Smithfield Dr., Bridger Ph II Sub.
Plat Cabinet C, Page 245
City of Jonesboro
Craighead County, Arkansas

Dear Otis:

City Water and Light has no objection with the abandonment of the twenty (20) foot drainage easement located as follows: Ten (10) feet on the north property line of Lot 20 and ten (10) feet on the south property line of Lot 21 of Smithfield Drive, Block D, Bridger Place Ph II Subdivision as shown on the attached plat. Please call if more information is needed.

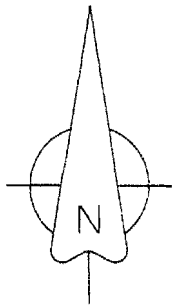
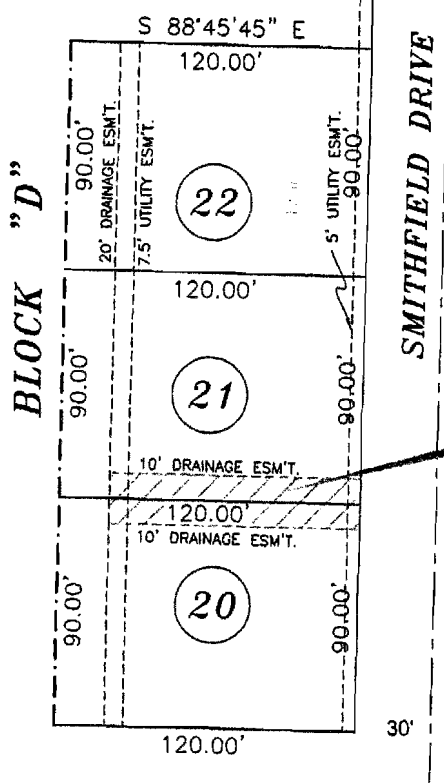
Sincerely,

A handwritten signature in black ink, appearing to read 'Ronald L. Bowen', is written over a large, loopy, scribbled-out signature.

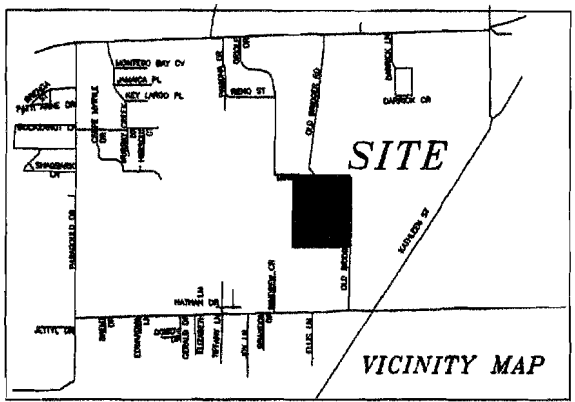
Ronald L. Bowen. P.E.
Manager, City Water & Light

Enclosure

Cc: Carlos Wood



20' DRAINAGE EASEMENT
TO BE ABANDON



STATE OF ARKANSAS
No. 1442
SIGNATURE
H. HIME
PROFESSIONAL LAND SURVEYOR

CERTIFICATE OF AUTHORIZATION
H AND S HIME
PROFESSIONAL SURVEYING SERVICES
No. 1432
ARKANSAS

20 FOOT DRAINAGE EASEMENT:
BETWEEN LOTS 20 AND 21 IN BLOCK "D"
BRIDGER PLACE, PHASE II TO THE CITY OF
JONESBORO, ARKANSAS AS SHOWN BY PLAT "C"
PAGE 245 IN THE OFFICE OF CIRCUIT CLERK AND
EX-OFFICIO RECORDER, CRAIGHEAD COUNTY,
ARKANSAS

H&S Hime Professional Surveying Services
POB No. 353
BROOKLAND, ARKANSAS 72417

PHONE: 870 972 1288
FAX: 870 972 1011
E-MAIL: hshime_butch@yahoo.com

ABANDONMENT PLAT

drawn by:	H. HIME
date:	11-26-2013
scale:	1" = 60'
client:	PHILLIPS CONSTRUCTION



December 12, 2013

Ms. Donna Jackson

Re: Lot 20 & 21, Block D, Bridger Place Subdivision, Phase 2
Drainage Easement Abandonment
Jonesboro, AR
Craighead County

Dear Ms. Jackson,

The proposed drainage easement abandonment for the referenced lot(s) in Bridger Place Subdivision has been reviewed. CenterPoint Energy does not have any facilities within the described easement and does not object to the abandonment.

If you have any questions or comments, you can reach me at 501-377- 4623.

Sincerely,

A handwritten signature in black ink, appearing to read "David Burnett".

David Burnett, PE
CenterPoint Energy SGO
Engineering Manager - Arkansas/Oklahoma Region

UTILITY RELEASE FORM

Telecommunications Easement Abandonment Request

I have been notified of the petition to vacate the following described as follows:

20 FOOT DRAINAGE EASEMENT: Bridger Place Phase II, Jonesboro, Arkansas as shown by plat recorded as Plat "C" Page 245 in the office of Circuit Clerk and Ex-Officio Recorder, Craighead County Arkansas. The Easement is located between Lots 20 & 21, Block "D" of Bridger Place Subdivision, Jonesboro, Arkansas.

UTILITY COMPANY COMMENTS:

No objections to the vacation(s) described above.

No objections to the vacation(s) described above, provided the following described easements are retained.

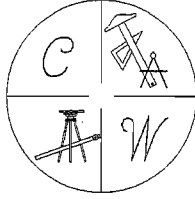
Objects to the vacation(s) described above, reason described below:

Cindy Cole

Mgr ATT Engineering

Signature of Utility Company Representative

Cindy Cole
Mgr ATT Engineering
12-12-13



CARLOS WOOD, P.E.

ENGINEERING CONSULTANT

122 CR 375

BONO, AR 72416

PHONE/FAX - (870) 972-8335

December 11, 2013

AT&T
Jonesboro Engineering Dept
Jonesboro, AR. 72401

Attn.: Cindy Cole

Re: Bridger Place Subdivision Phase II
Drainage Easement Abandonment Concurrence Request

Dear Cindy,

Please accept this letter as a formal request to concur with the abandonment of a drainage easement no longer needed in the Bridger Place Subdivision Phase II in the City of Jonesboro. Please find enclosed a copy of the recorded plat showing the drainage easement recorded, and an abandonment plat showing the proposed drainage easement being abandoned.

Please provide a letter to the city clerk, Donna Jackson, indicating AT&T concurs with the request.

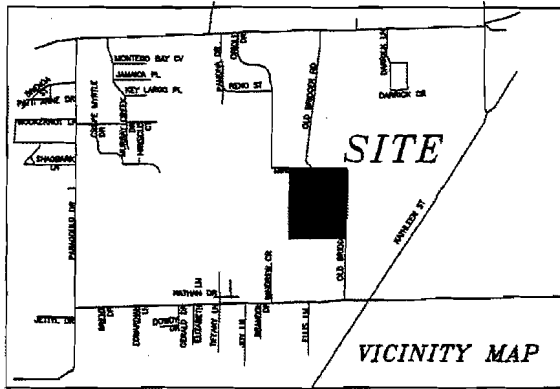
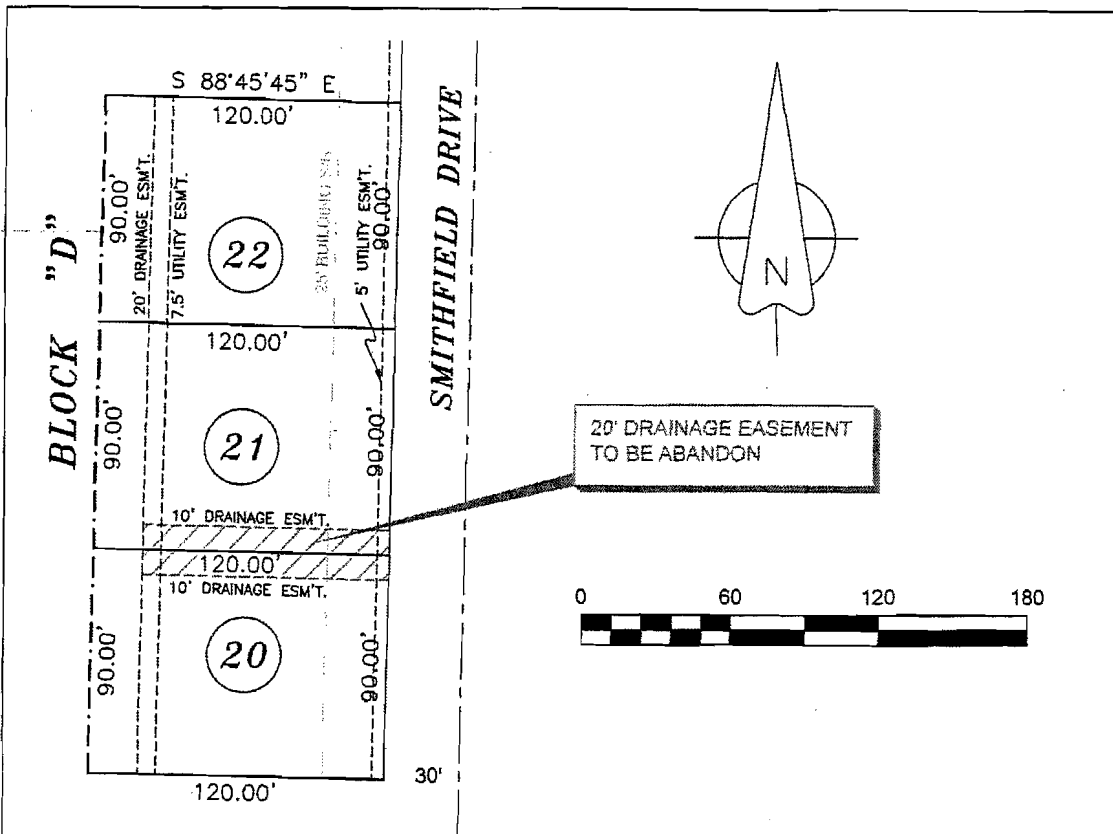
A drainage system was initially planned to be constructed between lots 20 and 21, however, during the final design process the drainage system was moved south two lots and the drainage easement between lots 20 & 21 was mistakenly left on the plat. Therefore, this drainage easement is no longer needed for a drainage easement.

Please reply by letter to Donna Jackson at 300 S. Church St., Jonesboro, AR 72401 with a hard copy of the letter and by email at djackson@jonesboro.org. She needs a reply by today so she can keep the request on the city council agenda for next Tuesday's meeting.

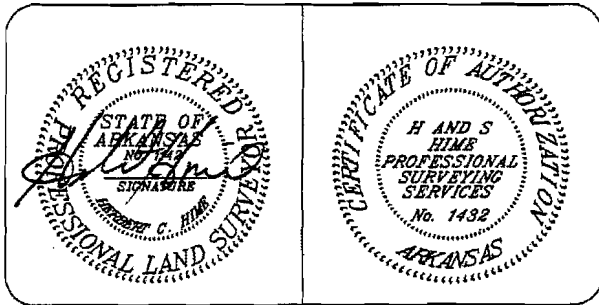
Thanks for your assistance.

Please contact me if further information is required.

Sincerely,
CARLOS WOOD, P.E.



20 FOOT DRAINAGE EASEMENT:
 BETWEEN LOTS 20 AND 21 IN BLOCK "D"
 BRIDGER PLACE, PHASE II TO THE CITY OF
 JONESBORO, ARKANSAS AS SHOWN BY PLAT "C"
 PAGE 245 IN THE OFFICE OF CIRCUIT CLERK AND
 EX-OFFICIO RECORDER, CRAIGHEAD COUNTY,
 ARKANSAS




**H&S Hime Professional
 Surveying Services**
 POB No. 353
 BROOKLAND, ARKANSAS 72417

PHONE: 870 972 1288
 FAX: 870 972 1011
 E-MAIL: hshime_butch@yahoo.com

ABANDONMENT PLAT	
drawn by: H. HIME	20 FOOT DRAINAGE EASEMENT TO BE ABANDON ALONG LINE BETWEEN LOTS 20 & 21 IN BLOCK 'D' OF BRIDGER PLACE SUBDIVISION, JONESBORO, AR
date: 11-26-2013	
scale: 1"= 60'	client: PHILLIPS CONSTRUCTION