

CITY OF JONESBORO SANITATION DEPARTMENT



Sanitation Department

- 38 employees (3 employees Mechanic Shop)
- 61 pieces of equipment
 - Includes automated trucks, trailers for recycling, knucklebooms for yard waste removal, rear loading trucks, front loading trucks, side loading trucks,

Ice Storm Damage removed in Jonesboro this year

- Picked up 403 tons
- D&J picked up 3,760 tons
- City Water & Light 12 tons

Sanitation Department

What do we do?

- 2008---33,071.55 tonnage picked up
- 2009---23,000.00 tonnage picked up (through Oct 31, 2009)
- 1,392,508 residential customer pick ups annually
- We also offer recycling service; yard waste removal; limb removal

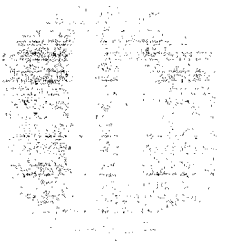
Sanitation Department Community Participation

- Project Realtor Restore
 - Removed 25 tons of trash this year
- Community Events
 - Sesquicentennial Celebration
 - Independence Day
 - Marathons and other events at our local parks and ASU
 - Car Seat sponsored by Car Seat Coalition

Sanitation Department

- Assists other departments when the need arises.
 - Ice storm debris removal with the Street Department
 - Removal of debris cleaned from local ditches by the Street Department
 - Removal of debris for Project Realtor Restore with the CDBG office

Sanitation Department



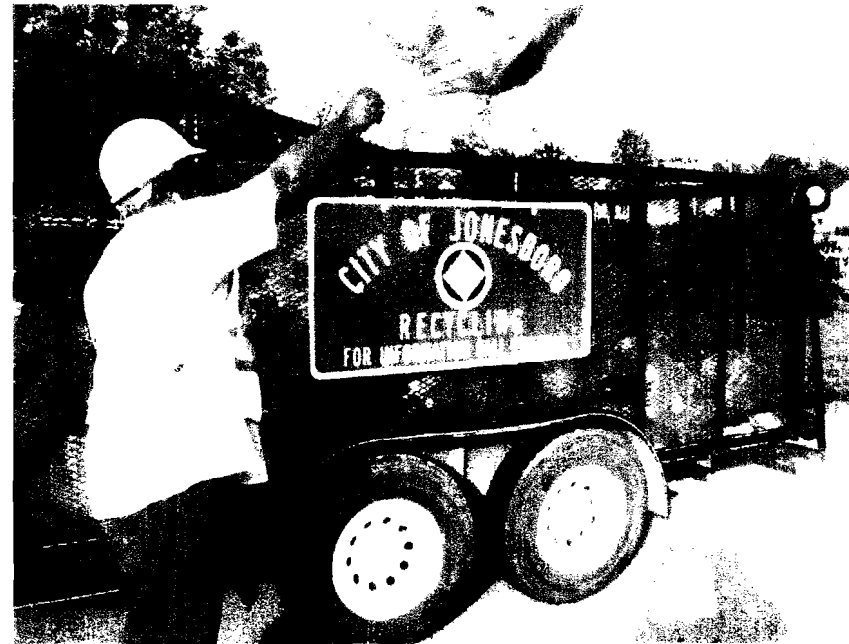
A Cleaner Jonesboro

Sanitation Department Recycling

Amount of items recycled by City residents, as of October 31st.



BLUE BAG & NEWSPAPER RECYCLING



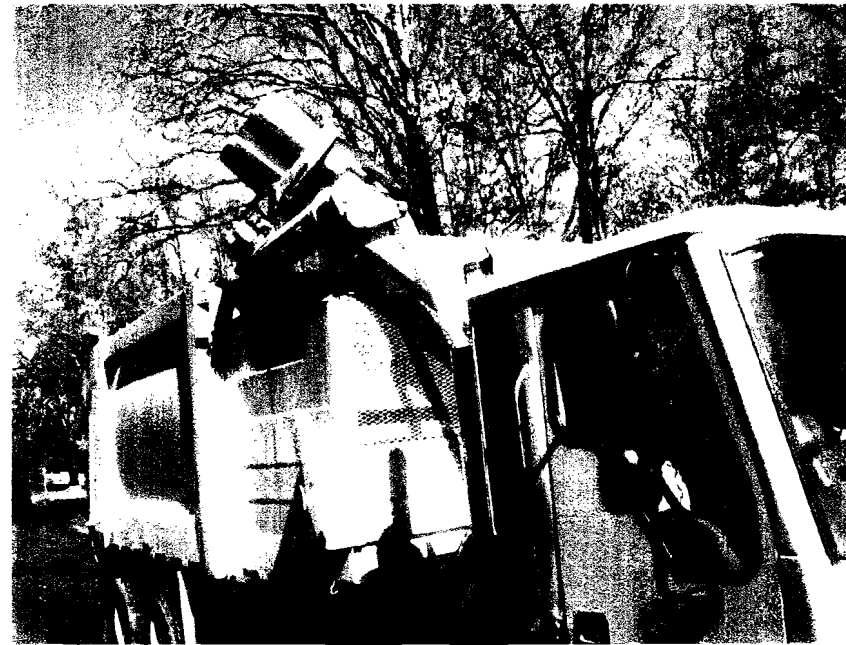
Our Recycling Crews picks up blue bags, newspaper, Cardboard daily. Recyclable items: #1 & #2 plastics, clear glass containers, aluminum and/or steel cans, newspaper, corrugated cardboard these items are taken to Hummelstein Recycling Center for processing



CARDBOARD RECYCLING

City Residents are offered a way of disposing of their corrugated cardboard boxes. Only requirement is to have them broken down, clean, and free of any trash and placed curbside on trash pick up day. Please call us and let us know you have cardboard for pick up

AUTOMATED TRUCKS



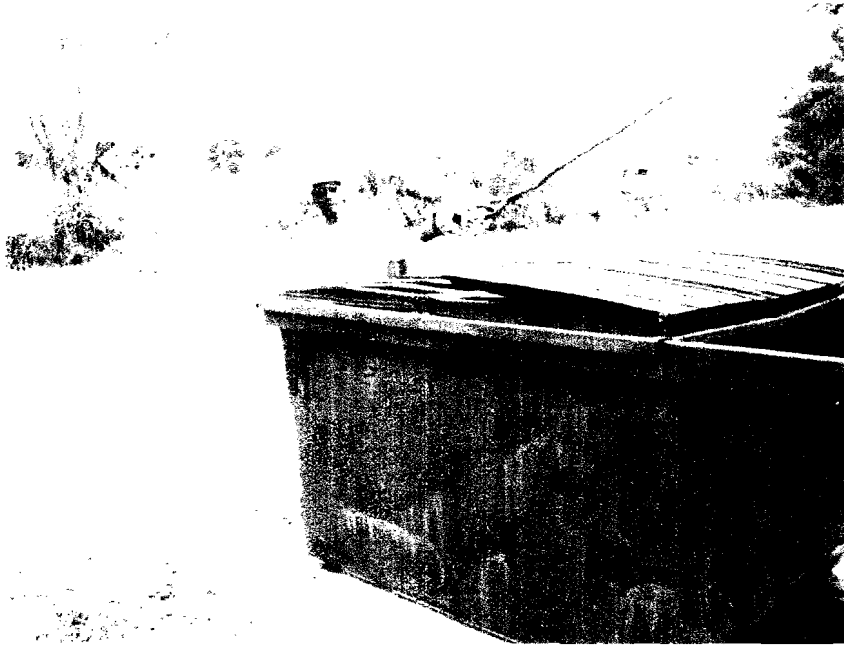
Automated trucks pick up residential houses in Jonesboro, these trucks average between 1,200 to 1,500 daily picks up a week. They are the bulk of operation; it is a one man operation and as you can see the driver controls the arm from inside the cab they pick up the container and empty it into a hopper; if containers are too full or trash isn't bagged it can cause a huge mess.

10- YARD SIDE LOADING TRUCK

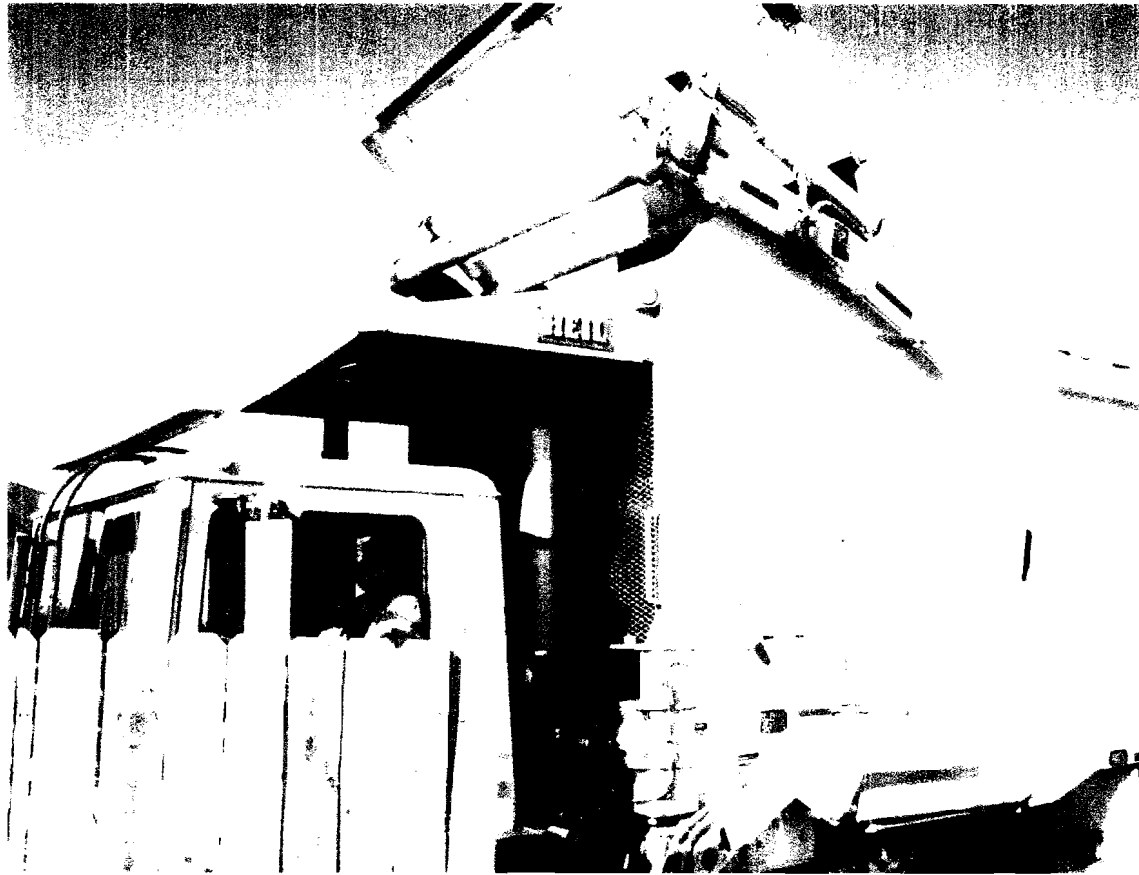


Nicknamed Pac-Rat's in our Dept. Used to pick up rear door for elderly and dead-ends and other pickups that automated trucks can't get to safely. This is another crucial aspect to our dept. As you can see the guys go get containers and empty's them using a "flipper cart device" located on the truck and the controls are operated on the outside of the truck. These guys are on a constant run all day.

REAR LOADING TRUCK



Rear Loading Truck used to pick up Apartments and City offices, Areas that are too large for the 95 gallon containers. These guys hook a cable to the dumpster and lifts the dumpster into the back of the truck and runs the controls on the outside of the truck



FRONT LOADING TRUCK

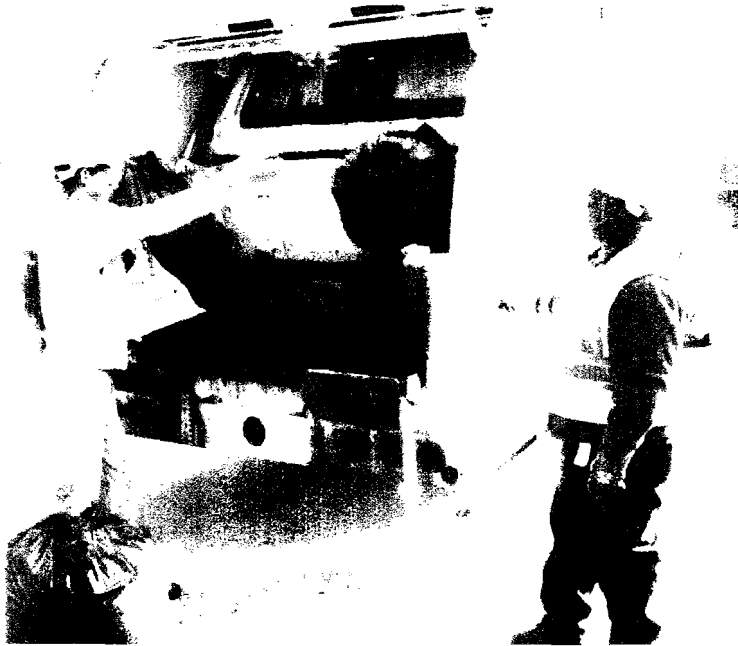
Picks up front load dumpsters at apartments, also at City Office's. This truck is a one man operation; the truck pulls up to the dumpster and the arms has two forks on it and he drives into the slots for the forks and loads the dumpster up and puts the dumpster over the cab of the truck and empties into the hopper of the truck.



Knuckle Boom Operator

Knuckle boom trucks are used to pick up our limbs/brush that are done on a monthly schedule, also assist Street Dept , Code Enforcement, illegal dump sites , and other various jobs need to be done for the City and Departments.

YARD WASTE REMOVAL



Yard Waste trucks; picks up bagged grass and leaves on a daily basis, routes are ran on the same day as trash and recycling; Yard waste is picked up by hand and thrown into the truck so, please don't bag them too heavy. Bags or yard waste are brought to our location and soon we will be removing bags and placing grass, leaves, limbs and brush into a 4030 destructor/ Incinerator (see next slide). We use our rear-loading truck for hauling.

Clean, environmentally friendly operation

Quartz Air ensures smokeless operation

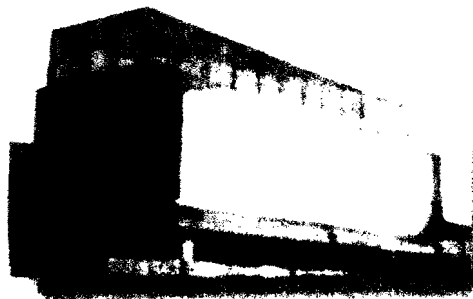
High pressure, indirect air for more complete burning



Stainless Steel screen house captures fly ash

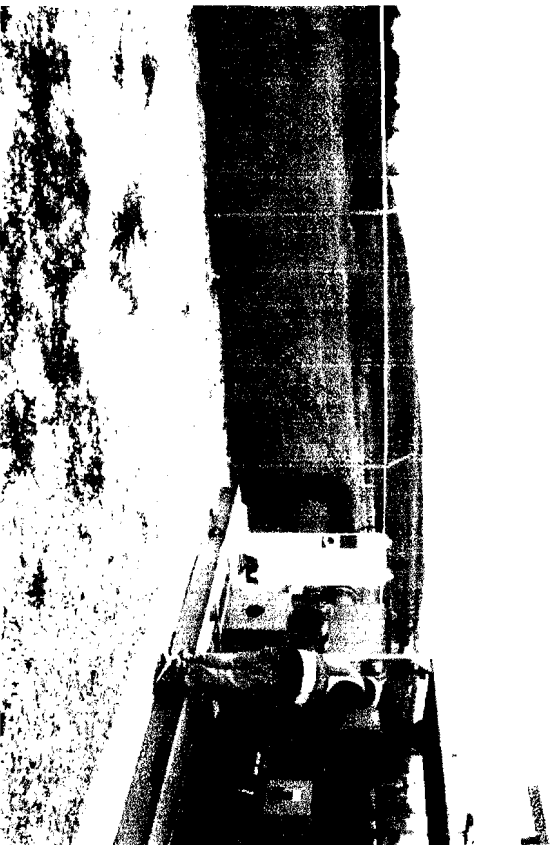
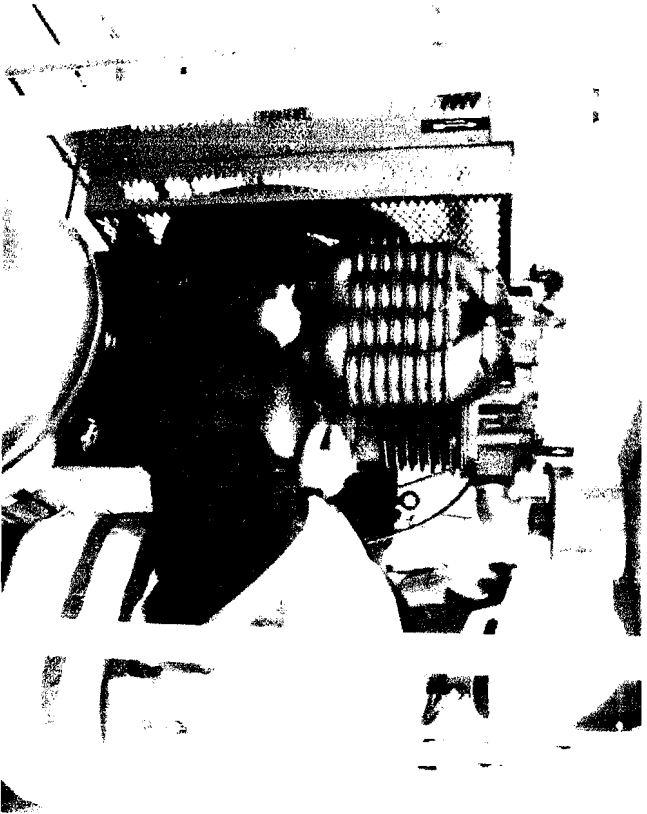
2,000 degree refractory lined combustor chamber

Easy access for ash clean out

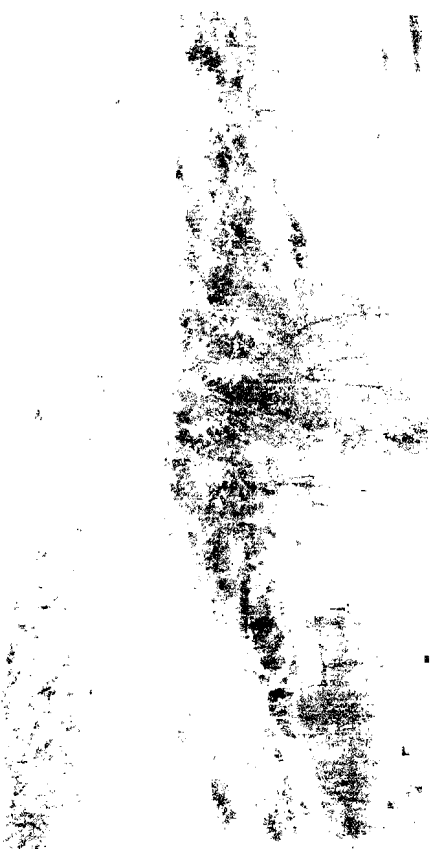


WRT 4030 Destructor will soon be used to dispose of green waste collected from City Residents, Street Dept and etc. This is compliant with ADEQ

FLARE SYSTEM



LANDFILL



Has been approved by ADEQ to be in Post-Closure status

Back side of our Facility located at 1624 Strawfloor we are with
Street Dept and Mechanic Shop



Thank you for spending time to get to know our department!!

