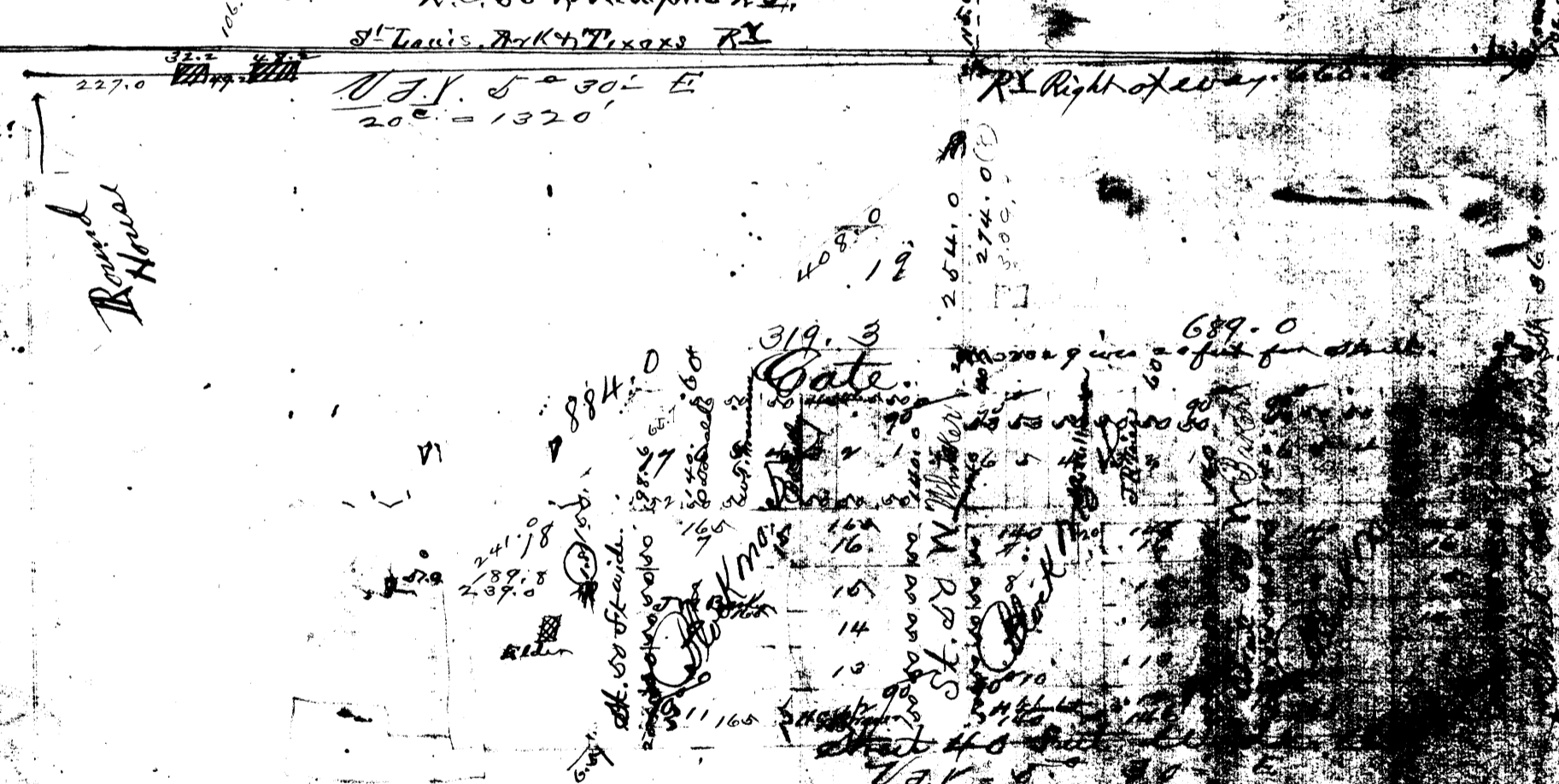
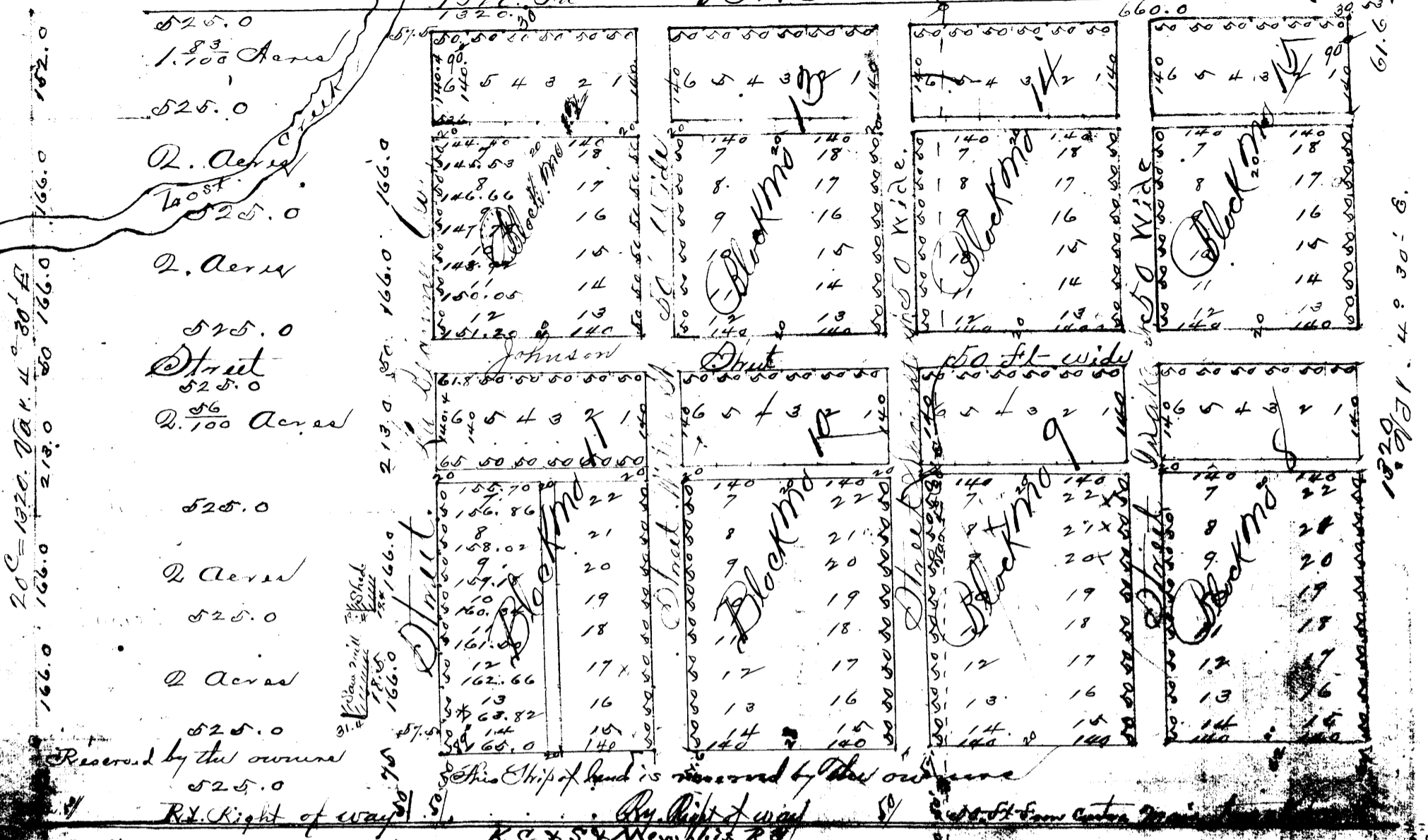


N. Cor. of S. N. of the N. E. Q. 4
T. 14 N. R. 4 E.

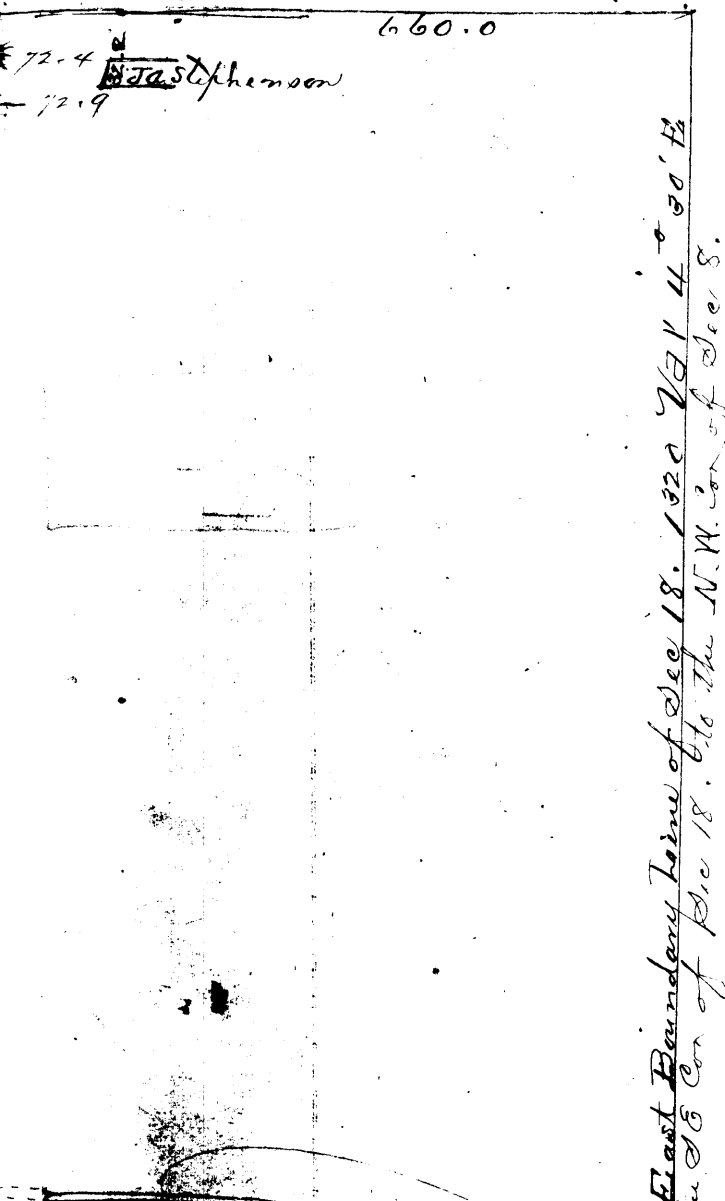


I, J. E. Kaulowaty, of St. Louis Mo. as Genl Agent for the Southern Improvement Association, present the accompanying plat of Matthew's addition to the town of Jonesboro Craighead County Arkansas, said addition being situated in Section eighteen (18) in township fourteenth (14) North, in Range four (4) East. I hereby dedicate, to the public use and benefit, all the streets on said plat. Said streets being parallel, or at right angles with each other, being the width indicated on said plat. The remainder of the land is for use or sale in tracts or parcels, lots or blocks as therein indicated. In witness whereof I have hereunto set my hand at this dedication & declaration on this 7th day of August 1887. J. E. Kaulowaty

Dec 18. T. 14. - R 4 E.

Deed on Record

West Half. S.E. Quarter of the N.E. Qr. containing 20 acres. S.W. Quarter of the N.E. Qr. Containing 40 Acres.
Commencing at the North East Corner of the South East Quarter of Dec 18. Township 14 North. Range 4 East of the 5th Principal Meridian. Running west 660. feet to a Stake. Thence South 363 feet ft to a Stake. Thence west 689 ft to a Stake. Thence North 274 ft to a Stake. Thence South 57° 30' west. 884 feet to a Stake. Thence East 239 feet to a Stake. Thence South 196 feet to a Stake. Thence East 1800 feet to a Stake. Thence North, with the Section Line, 830 feet to the place of beginning. Containing 26. ¹⁸/₁₀₀ acres.



First Boundary Line of Dec 18. 1820 to 14° 30' E. the S.E. Cor. of Dec 18. to the N.W. Cor. of Dec 18.

N.E. Corner of the S.E. Quarter Dec 18.

Section 19

60. ft wide

110	120	130	140	150	160	170	180	190	200
110	120	130	140	150	160	170	180	190	200
110	120	130	140	150	160	170	180	190	200
110	120	130	140	150	160	170	180	190	200
110	120	130	140	150	160	170	180	190	200
110	120	130	140	150	160	170	180	190	200
110	120	130	140	150	160	170	180	190	200
110	120	130	140	150	160	170	180	190	200
110	120	130	140	150	160	170	180	190	200
110	120	130	140	150	160	170	180	190	200

This is a 8800 straight line

I hereby certify that this is a correct plat of my Survey of the lands owned by the South Western Improvement Association, said lands located in the town of Jonesboro. County of Craighead Arkansas. C. C. Chase. D. C. July 18 1857

This point is 1810 ft north of the S.E. Corner of Dec 18.

Filed in my office for records on the 29th day of August 1857.

J. H. Maignan, Clerk
J. R. M. M. M. Deputy