

LEGAL DESCRIPTION:

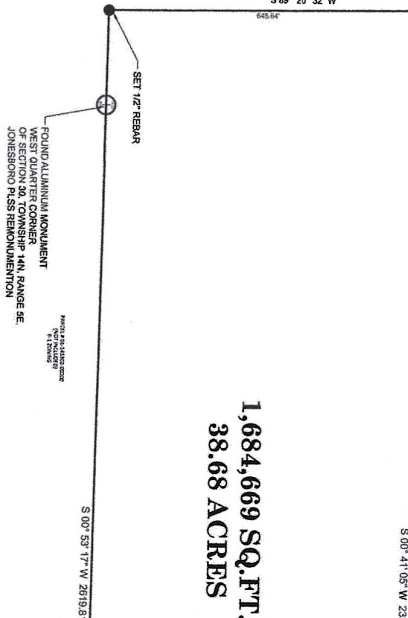
A part of the Northeast Quarter of Section 25, Township 14 North, Range 4 East, Craighead County, Arkansas, being more particularly described as follows:

From the Northeast corner of said Section 25, thence run S 00°53'17" W, a distance of 2,919.81 feet to a point; thence run S 89°20'32" W, a distance of 645.84 feet to a point; thence run N 10°41'09" E, a distance of 2,322.09 feet to a point; thence run N 00°39'29" E, a distance of 232.24 feet to a point on the center line of Arkansas Highway 18 (AKA Highland Drive); thence run along said right-of-way as follows: N 89°59'58" E, a distance of 188.55 feet to a point; thence N 89°20'49" E, a distance of 188.55 feet to a point; thence N 81°08'44" E, a distance of 292.84 feet to a point; thence N 89°59'58" E, a distance of 106.25 feet to a point, said point being the POINT OF BEGINNING, said tract containing 1,684,669 square feet, more or less, or 38.68 acres, more or less, and being subject to easements and rights-of-way of record.

AG-1 ZONING

PARCEL 01-144251-00210
(NOT INCLUDED)

1,684,669 SQ.FT.
38.68 ACRES

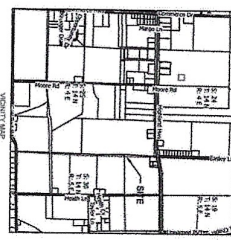


I-1 ZONING

AG-1 ZONING

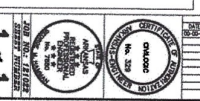
CERTIFICATE OF SURVEY
This is to certify that the above described land has been surveyed and the boundaries thereon shown are correct in accordance with the laws of Arkansas. The plat hereon is a true and correct copy of the original plat on file in the office of the Surveyor General for the State of Arkansas. Witness my hand and the seal of the Surveyor General at Little Rock, Arkansas, this 14th day of August, 2002.

CERTIFICATE OF OWNERSHIP
We hereby certify that we are the owners of the property herein described and that we are the only persons who have any right or interest in the same. We have no other heirs, assigns, or persons claiming an interest in the same. We have no other heirs, assigns, or persons claiming an interest in the same. We have no other heirs, assigns, or persons claiming an interest in the same.



LEGEND

	MONUMENT
	RIGHT-OF-WAY
	EASEMENT
	BOUNDARY LINE
	ADJACENT SURVEY POINT
	ADJACENT SURVEY POINT



PLAT OF SURVEY FOR PLATNUM PROPERTIES OF NEA, LLC

ENGINEERS PLANNERS SURVEYORS

Civilogic

203 Southwest Dr., Jonesboro, AR 72403-7800 www.civilogic.net

Date: 02-24-2002	Scale: 1"=100'	Job No.: 121002	Sheet No.: 1 of 1
Division: 25	Township: 14N	Range: 04E	County: CRAIGHEAD
Drawn By: BW	Checked By: GH	© 2002, Civilogic	