



November 5, 2018

Kenneth Scrape
Benchmark Land Surveying, Inc.
P.O. Box 1921
Jonesboro, AR 72403

RE: Abandonment of 15' Utility Easement within Lot 49
Sage Meadows Phase 1-B, Jonesboro, Arkansas

Dear Mr. Scrape:

The City of Jonesboro Engineering and Planning Departments concur with the abandonment of the 15' utility easement as shown on the Sage Meadows Phase 1-B, filed in Plat Cabinet "B", Page 191, Public Records of Craighead County, at Jonesboro, Arkansas as shown on the attached copy of this plat.

Please call if more information is needed.

Sincerely,

Craig Light, PE, CFM
City Engineer

Derrel Smith
City Planner

October 31, 2018

Engineering Department
City of Jonesboro
300 S. Church Street
Jonesboro, AR 72401

RE: Request to Abandon a portion of the 15' Utility Easement within Lot 49
Sage Meadows-Phase 1-B, Jonesboro, Arkansas

Dear Mr. Light:

This 15' utility easement is shown on the Sage Meadows-Phase 1-B, filed in Plat Cabinet "B", Page 191, Public Records of Craighead County, at Jonesboro, Arkansas. Copies of this plat are enclosed for your records.

A petition, resolution and ordinance will be presented to the City Council for their decision.

State law stipulates that the proper procedure for abandonment of an easement requires the passage of an ordinance by majority vote of the elected City Council. Simply recording the replat does not satisfy the legal requirement for closure of the easement. City officials need written evidence from all utility service providers agreeing with the closure before passing the required ordinance.

A space has been provided below for your signature acknowledging your concurrence with this proposed action to close a portion of the 15' utility easement shown on the original plat of this subdivision. Please sign and return one copy of this letter.

If I can be of further assistance or if additional information is needed, please contact me at your convenience.

Sincerely,
Benchmark Land Surveying, Inc.



Kenneth L. Scrape, PS

I, _____ (print name), concur in the closure of a portion of the 15' utility easement within lot 49 as shown on the Sage Meadows-Phase 1-B, Jonesboro, Arkansas, as shown.

(Signature)

Craig Light, PE—City Engineer

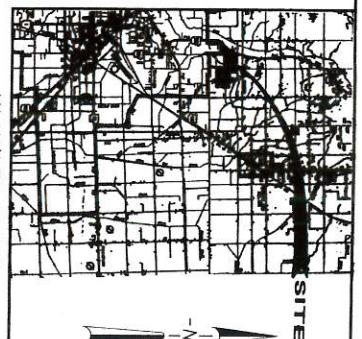
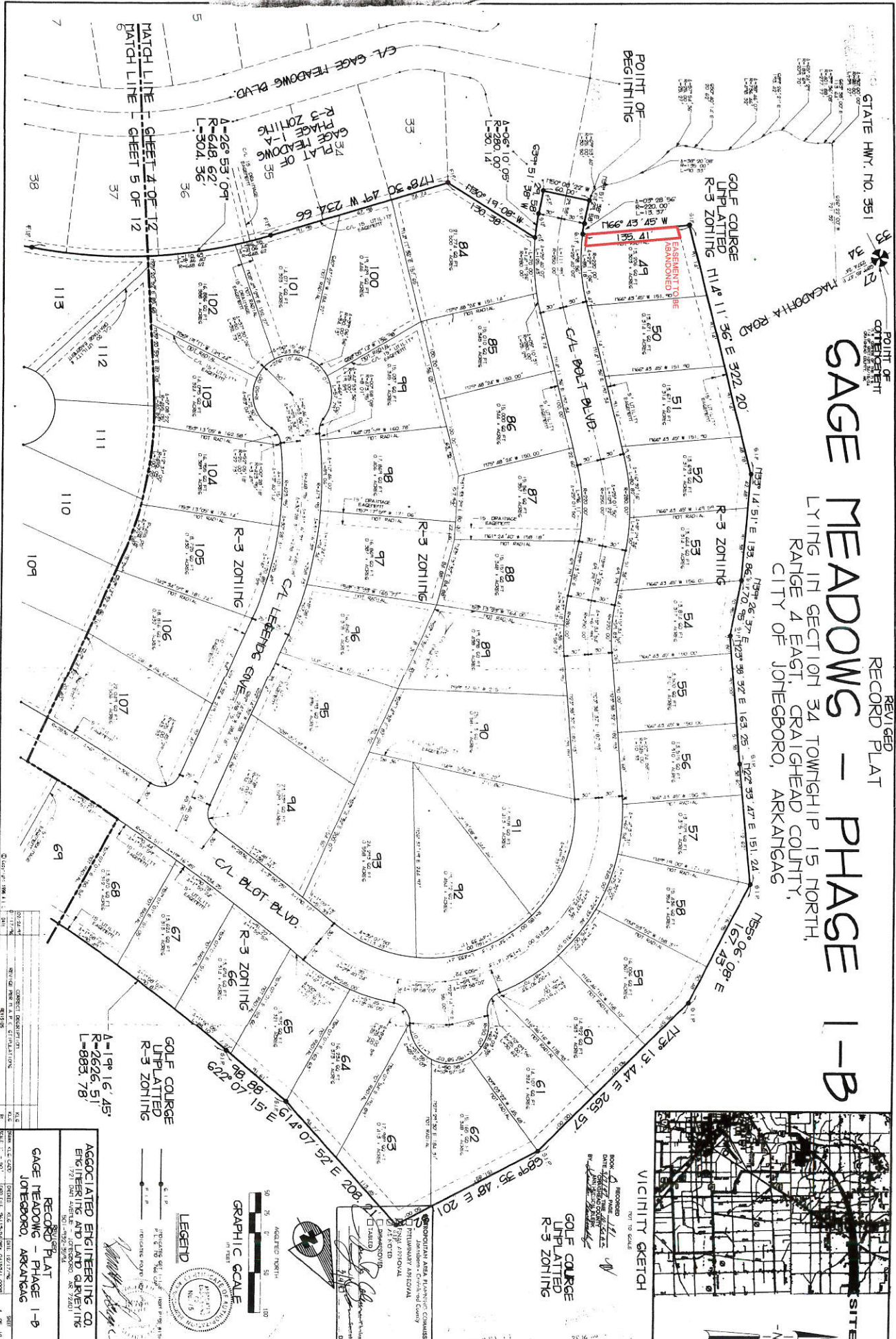
18238-006

POINT OF
CORRECTION

REVISED
RECORD PLAT

SAGE MEADOWS - PHASE 1-B

LIVING IN SECTION 34 TOWNSHIP 15 NORTH,
RANGE 4 EAST, CRAIGHHEAD COUNTY,
CITY OF JONESBORO, ARKANSAS



NO.	DESCRIPTION	DATE	BY
1	RECORD PLAT	11/11/11	...
2
3
4
5
6
7
8
9
10
11
12
13
14
15
16
17
18
19
20
21
22
23
24
25
26
27
28
29
30
31
32
33
34
35
36
37
38
39
40
41
42
43
44
45
46
47
48
49
50
51
52
53
54
55
56
57
58
59
60
61
62
63
64
65
66
67
68
69
70
71
72
73
74
75
76
77
78
79
80
81
82
83
84
85
86
87
88
89
90
91
92
93
94
95
96
97
98
99
100
101
102
103
104
105
106
107
108
109
110
111
112
113

LEGEND

GRAPHIC SCALE

1" = 100 FEET

ASSOCIATED ENGINEERING CO.
ENGINEERING AND LAND SURVEYING
1721 DART AVENUE - JONESBORO, AR 72401
PHONE: (501) 938-2200 FAX: (501) 938-2201

RECORD PLAT
SAGE MEADOWS - PHASE 1-B
JONESBORO, ARKANSAS

BOOK 117
PAGE 117
INDEXED TO RECORD PLAT

RECORD PLAT
SAGE MEADOWS - PHASE 1-B
JONESBORO, ARKANSAS

