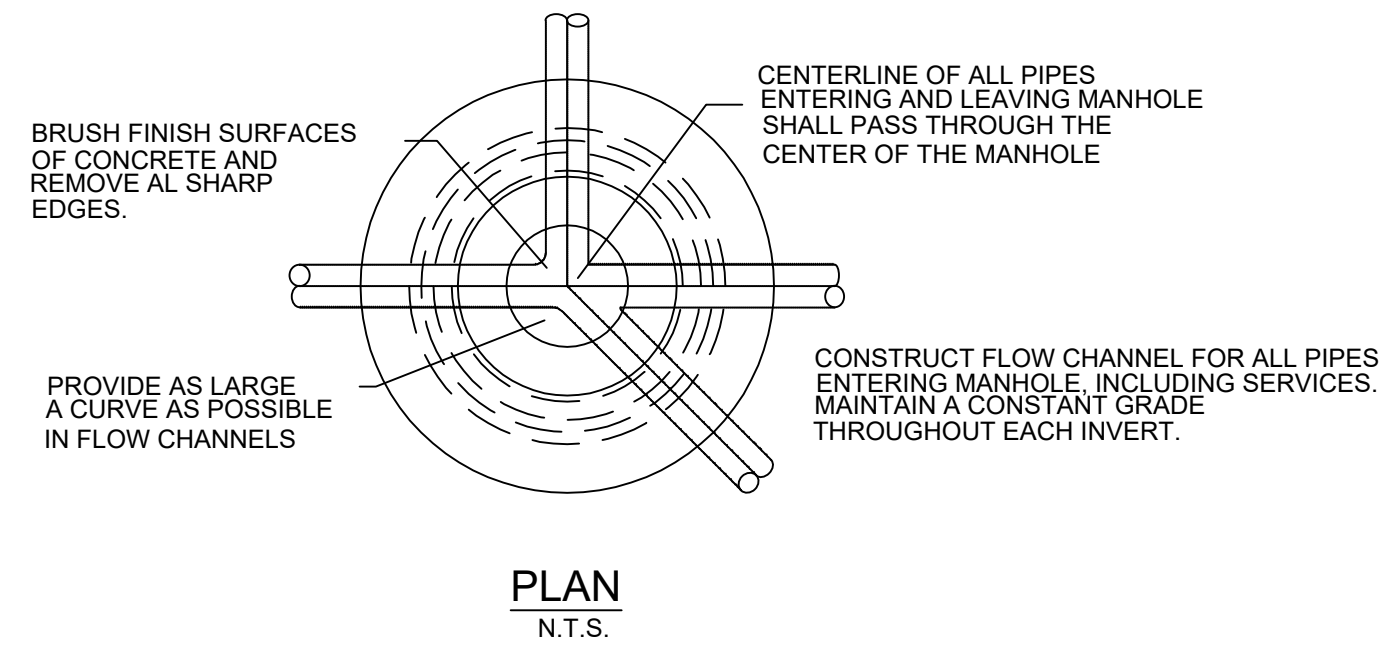


NOTES TYPICAL TO ALL MANHOLES

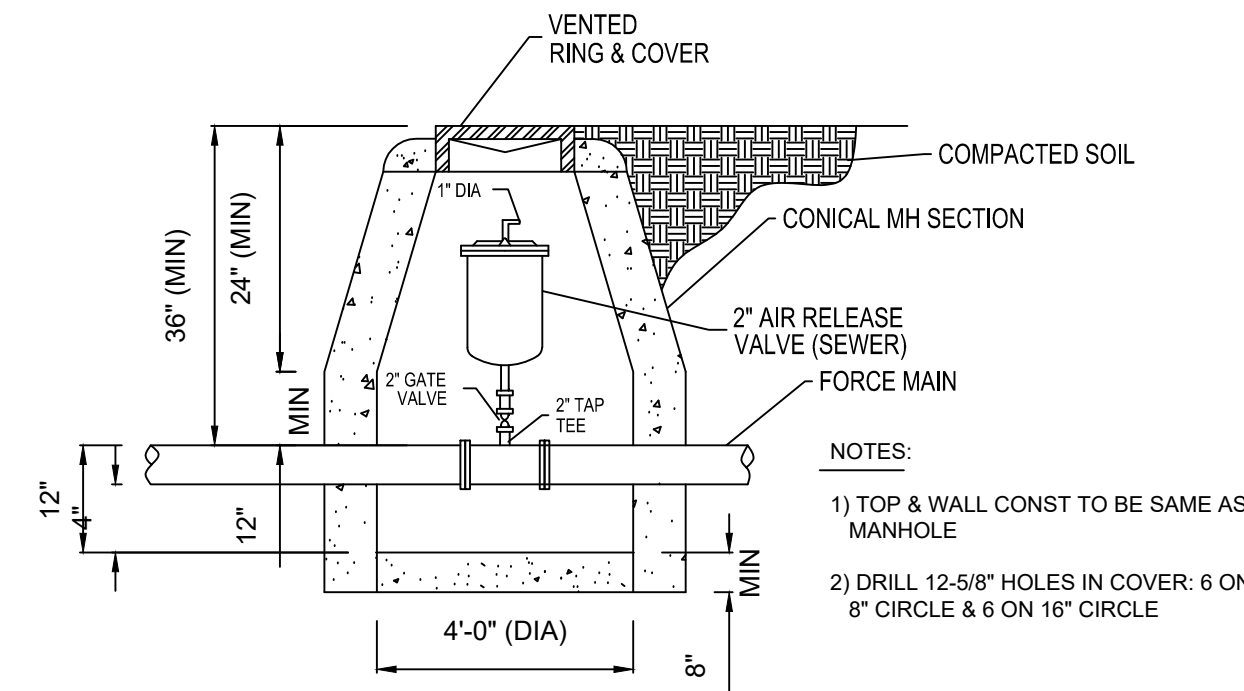
- MANHOLE BASES TO BE 4000 PSI, 28 DAY STRENGTH, LIMESTONE MIX CONCRETE ON UNDISTURBED SUB-GRADE OR ON COMPACTED SELECT FILL MATERIAL AS AUTHORIZED.
- MANHOLE SIDEWALL MATERIAL TO BE CONCRETE IN ACCORDANCE WITH PROPOSAL FORM REQUIREMENTS.
 - 4" I.D. FOR SEWER SIZES 6" THRU 24"
 - 5" I.D. FOR SEWER SIZES 24" THRU 30"
 - 6" I.D. FOR SEWER SIZES 36" THRU 42"
- SET MANHOLE TOPS AS FOLLOWS:
 - IN STREETS, ROADS, HIGHWAYS, AND OTHER PAVED AREAS: FLUSH WITH FINISHED PAVING GRADE.
 - UNDEVELOPED AREAS, SUCH AS FIELDS, WOODS, ETC...: 12" ABOVE GROUND.
 - OTHER AREAS: 1" ABOVE GROUND.
- MANHOLE FRAMES SHALL HAVE MIN. OPENING OF 22" DIA.
- ALL DOGHOUSE MANHOLES TO BE INSTALLED WITH A-LOK WEDGE STYLE WATER STOP KITS.

STANDARD MANHOLE



MANHOLE DETAILS

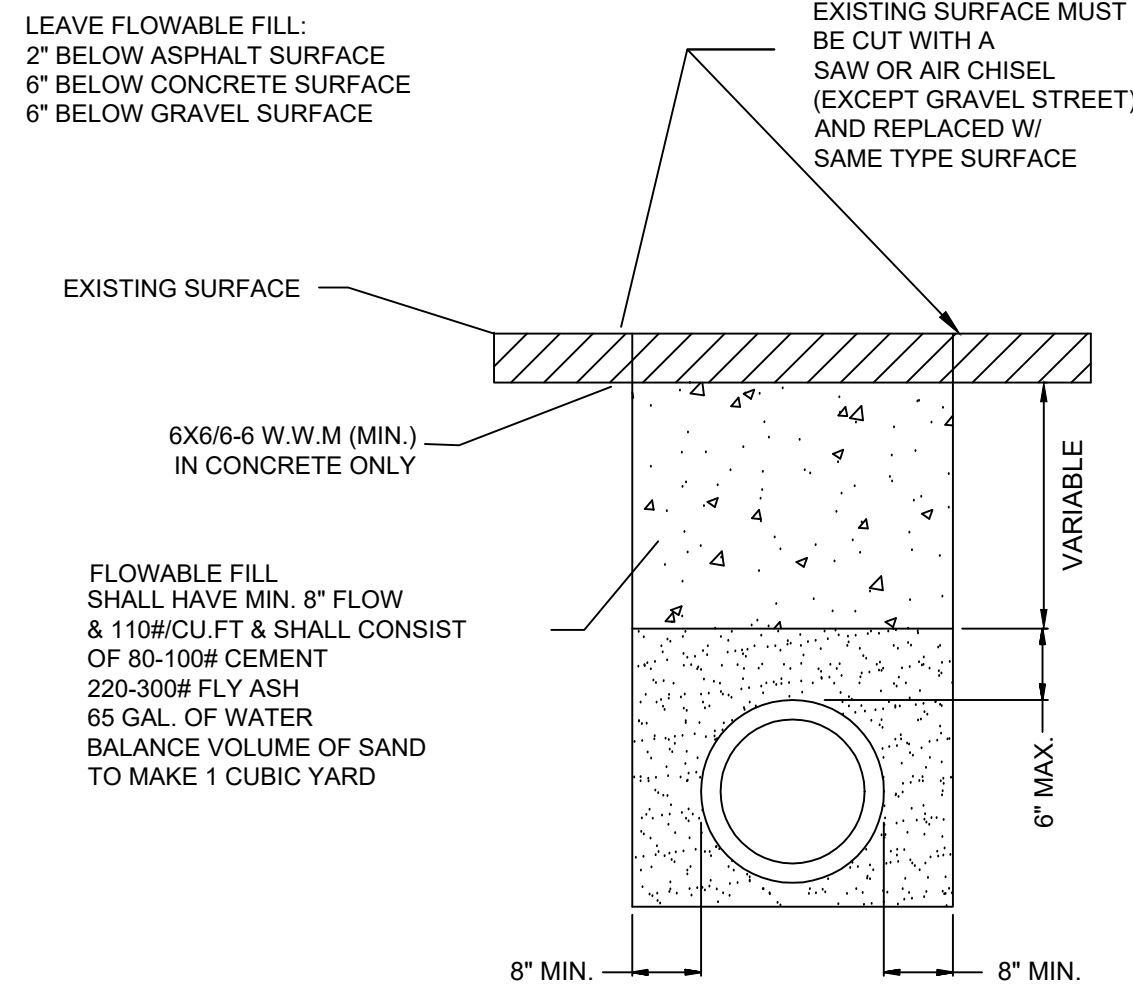
AIR/VACUUM RELEASE VALVE DETAIL



NON-EXISTING STREET LOCATIONS
SDR-26 PVC TRENCH DETAIL

NOTES:

- COARSE AGGREGATE SHALL BE MECHANICALLY TAMPED WHEN USED.
 - PIPE IN TRENCH SHALL BE PLACED ON NO LESS THAN 4" OF 3/4" MINUS LIMESTONE. ALL OVER EXCAVATION SHALL BE COMPACTED BACK TO GRADE W/ BEDDING MATERIAL.
 - PVC PIPE SHALL BE SDR-26 AND INSTALLED IN ACCORDANCE WITH UNI-BELL PVC PIPE ASSOCIATION'S RECOMMENDATIONS FOR CONSTRUCTION.
- ROUND FOR SETTLING (54" MAX)
- COMPACT 8" (MIN) SB-2 IN PARKING AREAS, TO 98% MODIFIED PROCTOR
- COMPACT BACKFILL IN PARKING AREAS AND PROPOSED STREET CROSSINGS TO 95% MODIFIED PROCTOR
- W/ GRACULAR BASE FILL (P.I. < 15) OR SB-2 (USE NATIVE SOIL EXCAVATED IN AREAS NOT IN PROPOSED STREET, PARKING AREAS, AND EXISTING STREETS)
- COARSE AGGREGATE BEDDING (3/4" MINUS LIMESTONE OR PEA GRAVEL) TO SPRINGLINE OF PIPE
- (PLACE BEDDING TO TOP OF PIPE WHEN EXCAVATION IS > 14" DEEP AND/OR IF LARGE ROCK IS IN EXCAVATION)



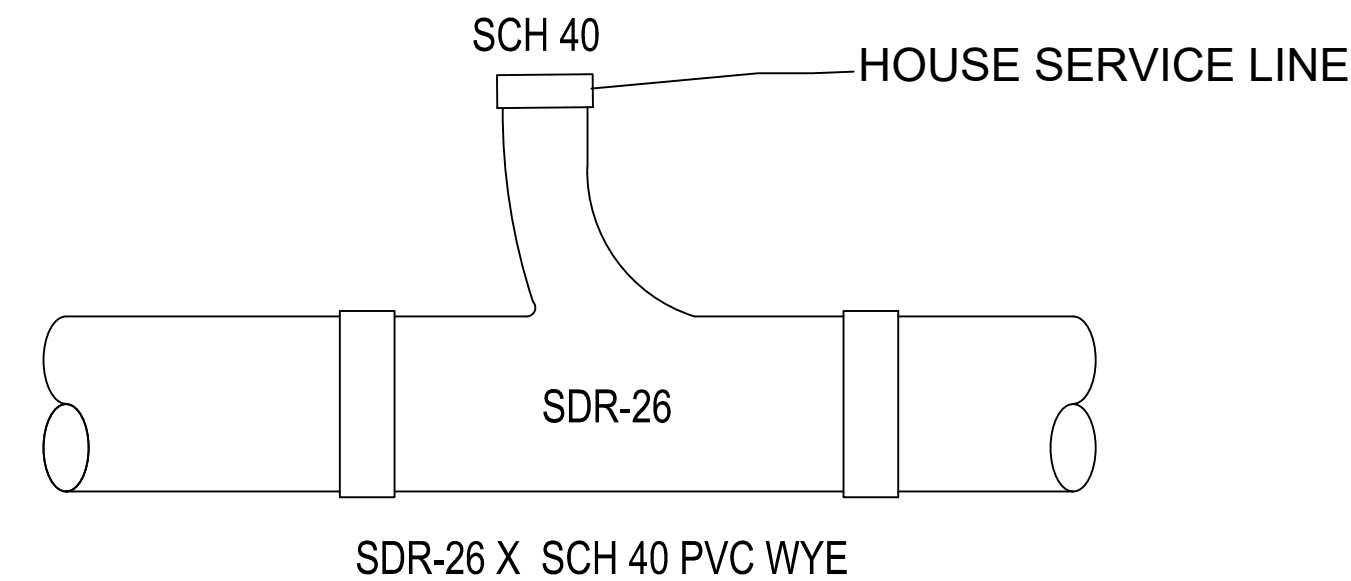
EXISTING STREET LOCATIONS

PVC TRENCH DETAIL

SINGLE WYE

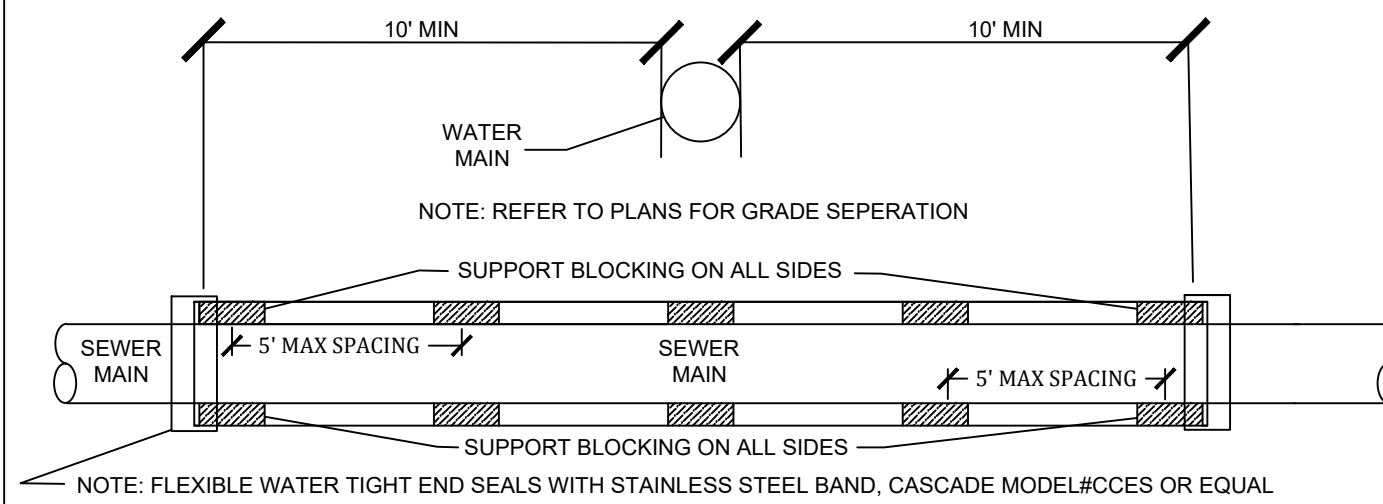
ALL SERVICE LINES UNDER PAVEMENT SHALL BE PVC SCH 40 PIPE W/ PVC SCH 40 COUPLINGS

TEE WYE ONLY



NOTE: 0.25 THICKNESS STEEL OR SCH 40" PVC ENCASEMENT PIPE SHALL EXTEND 10' MINIMUM EACH SIDE OF WATER MAIN

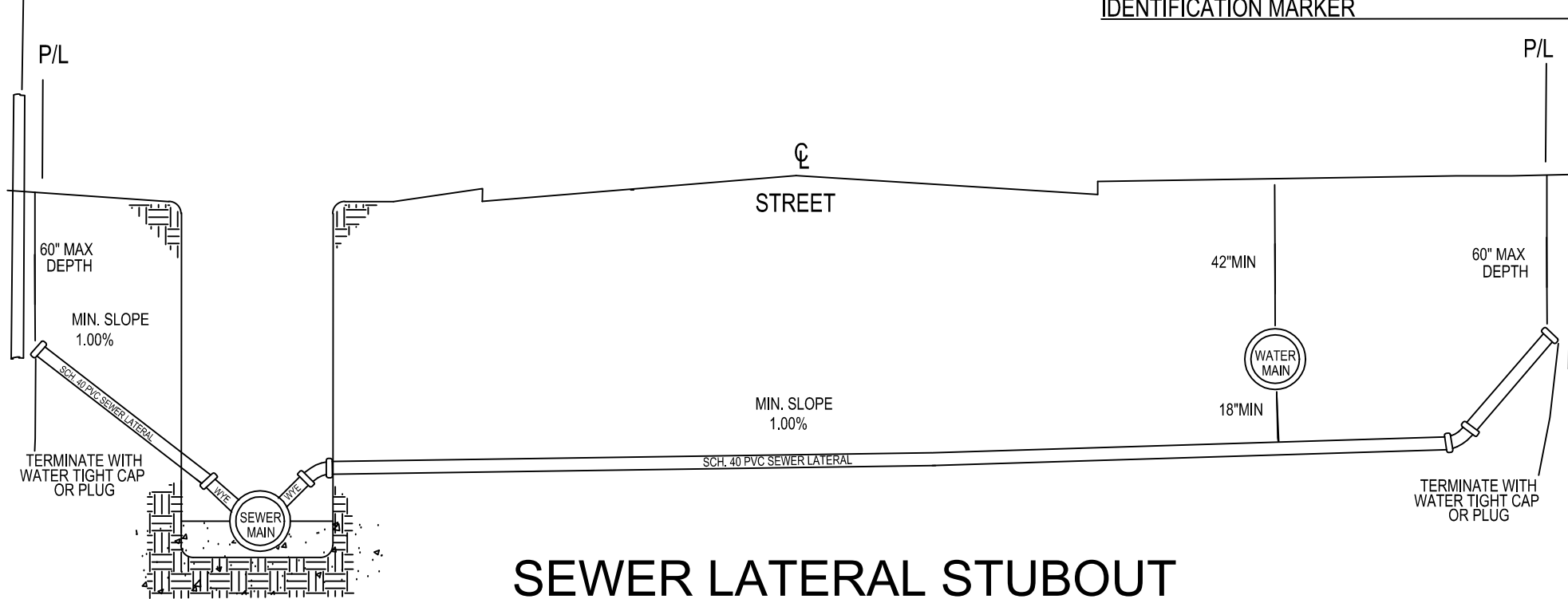
NOTE: REFER TO OPERATING ROUTING NOTE IF WATERLINE CANNOT AVOID GOING UNDER SEWERLINE



ENCASEMENT FOR SEWER MAINS AT WATER CROSSINGS

NOTE: WHEN 18" VERTICAL SEPERATION CANNOT BE MAINTAINED

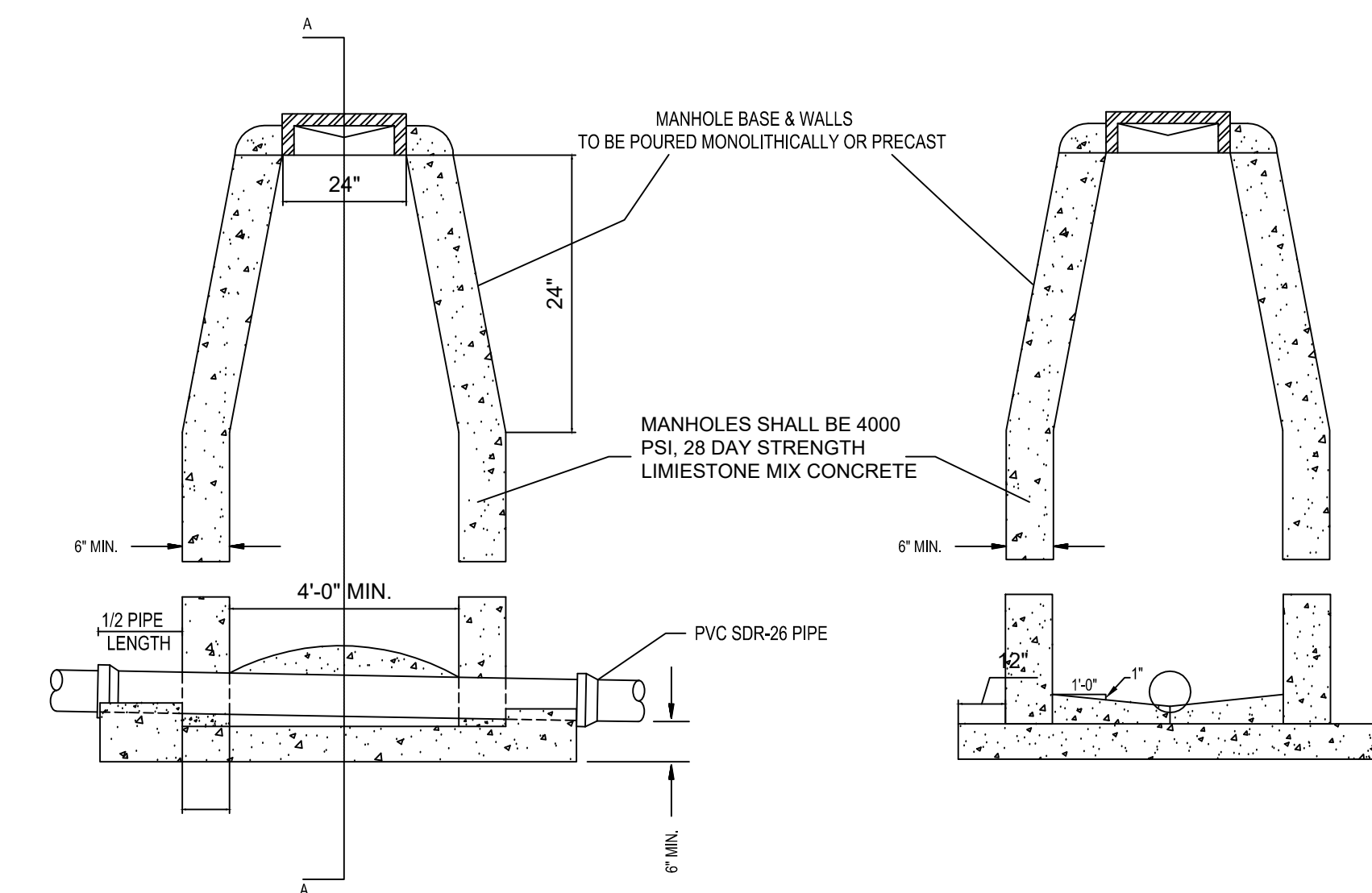
USE 4" PERFORATED SDR-35 PVC PIPE AS MARKERS @ END OF LATERALS 3'-4' ABOVE GROUND PAINTED GREEN FOR IDENTIFICATION MARKER



SEWER LATERAL STUBOUT
PERMITS REQUIRED BEFORE INSTALLATION

USE SAME CONFIGURATION FOR MANHOLE STUBOUTS

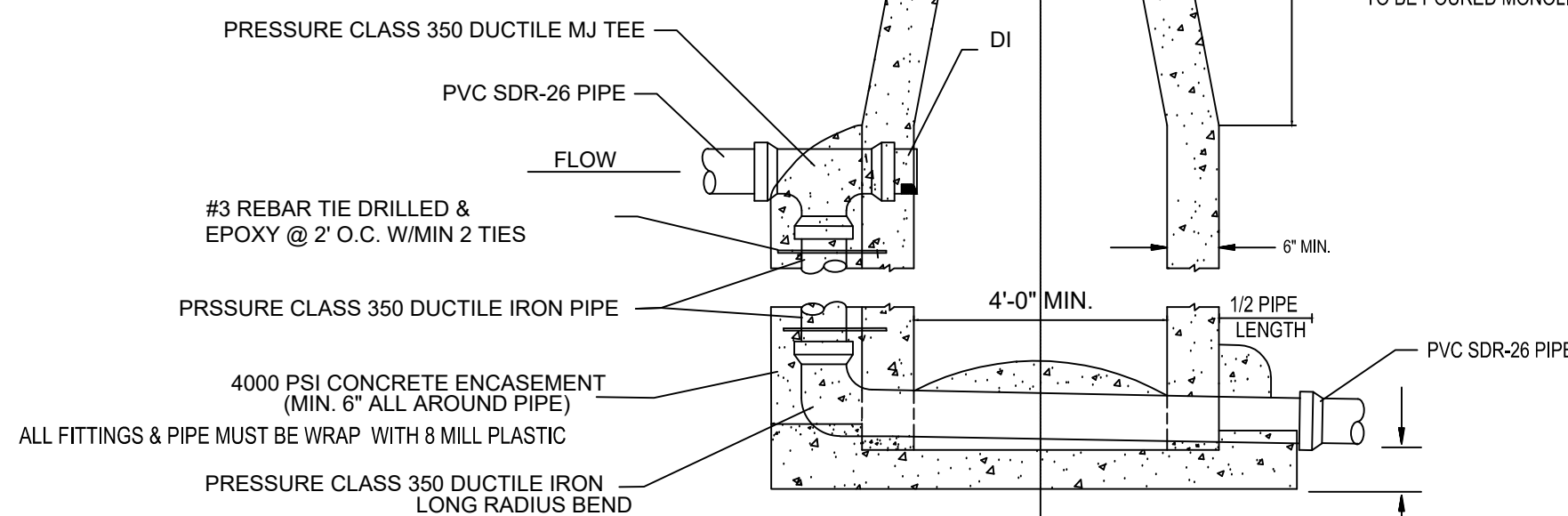
MANHOLE
CONSTRUCTION DETAIL



SIDE ELEVATION

SECTION A-A

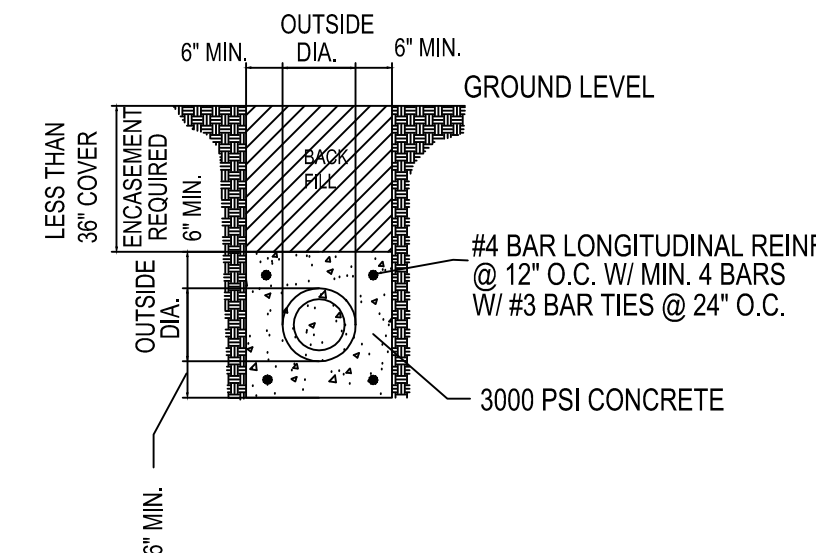
STANDARD MANHOLE



SIDE ELEVATION

SECTION A-A

DROP MANHOLE



CONCRETE ENCASEMENT
FOR
DITCH CROSSINGS

NOTE: ENCASEMENT PIPE MUST PRESSURE CLASS 350 DUCTILE IRON AND WRAP DUCTILE IRON PIPE WITH 8 MILL PLASTIC

SARAH CROSSING - PHASE IV

SEWER DETAILS



REVISIONS

DATE	BY	DESCRIPTION

DRAWING INFO.

DRAWN BY:	
DATE:	
SCALE:	

SHEET NUMBER:

DT-3

MARK MORRIS P.E.
6011 SOUTHWEST DRIVE
JONESBORO, AR 72404
PH: 1-870-919-7700
MARK@MARKMORRISHOMES.COM

MARK MORRIS