



May 4, 2017

Brandon Wood, P.E., P.S.
Wood Engineering & Surveying
112 CR 7625
Brookland, AR 72401

Re: Drainage Easement Abandonment – The Villas at Sage Meadows Phase II Lots 8 & 9

Dear Mr. Wood:

The City of Jonesboro Engineering and Planning Departments concur with the abandonment of a 15' drainage easement across lots 8 & 9 parallel to the south property lines, of The Villas at Sage Meadows Phase II in the City of Jonesboro, recorded in the Circuit Clerk's office of Craighead County, Book "C" Page 251 in the Craighead County Courthouse located in Jonesboro, Arkansas, as shown on the attached abandonment plat, with the following condition:

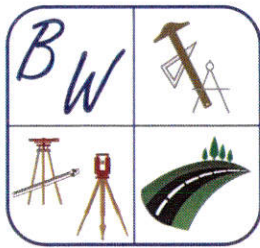
- 1.) The attached "Carter Replat of lots 8 & 9 of the Villas at Sage Meadows Phase II" be recorded in the Circuit Clerk's office of Craighead County prior to the final abandonment of the existing 15' drainage easement.

Please call if more information is needed.

Sincerely,

Craig Light, PE, CFM
City Engineer

Derrel Smith
City Planner



**BRANDON WOOD, P.E., P.S.
ENGINEERING & SURVEYING**

112 CR 7625
BROOKLAND, AR 72417
PHONE NO: (870) 930-7504
E-MAIL: [BWOOD@WOODENGR.COM](mailto:bwood@woodengr.com)
WWW.BWOODENGINEERING.COM

February 27, 2017

City of Jonesboro
Engineering Department
Craig Light – Engineering Director
300 S. Church St.
Jonesboro, AR. 72401

**RE: The Villas at Sage Meadows Phase II lots 8 & 9
Drainage Easement Abandonment Concurrence Letter Request**

Mr. Light,

Please accept this letter as a formal request to concur with the abandonment of a fifteen (15') drainage easement across lots 8 & 9 parallel to the south property lines, of The Villas at Sage Meadows Phase II in the City of Jonesboro, recorded in the Circuit Clerk's office of Craighead County, Book 'C' Page 251 in the Craighead County Courthouse located in Jonesboro, Arkansas, as shown on the attached plat.

Please provide a letter to the city clerk, Donna Jackson, indicating City of Jonesboro Planning Department concurs with the request.

Please reply by letter to Nikki Nottingham in Donna Jackson's office by email. Also, please send a copy to me at bwood@woodengr.com.

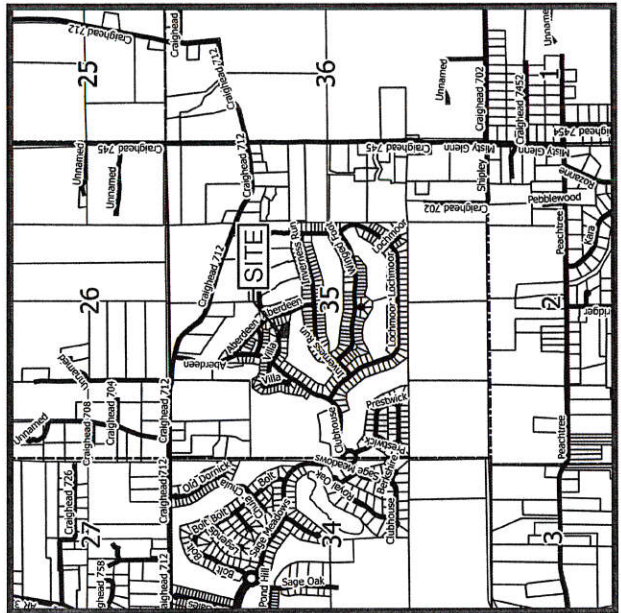
Thanks for your assistance.

If you have any questions, contact me at (870) 930-7504 or bwood@woodengr.com at your convenience.

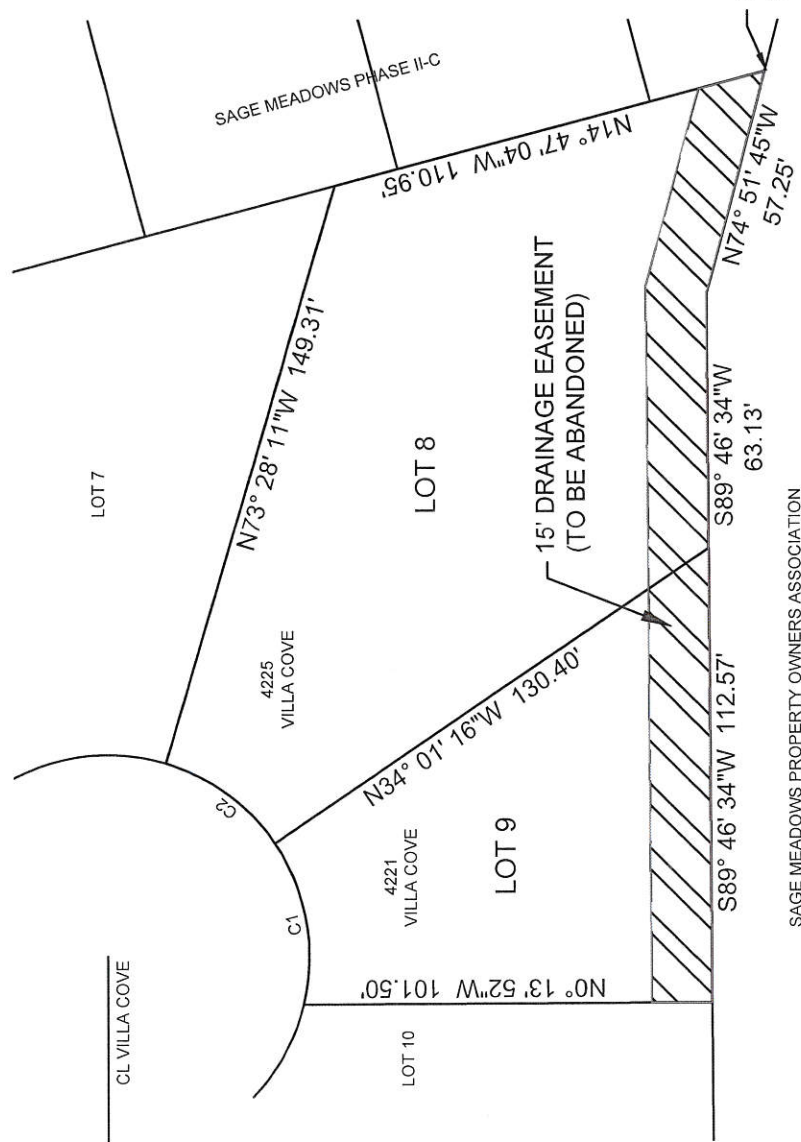
Sincerely,

Brandon Wood, P.E., P.S., CPESC, GISP

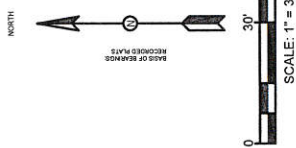
DESCRIPTION OF EASEMENT TO BE ABANDONED:
 A PART OF LOTS 8 & 9 OF THE VILLAS AT SAGE MEADOWS PHASE II RECORDED IN PLAT CABINET "C", PAGE 251, CRAIGHEAD COUNTY, ARKANSAS, SECTION 35, TOWNSHIP 15 NORTH, RANGE 4, EAST, BEING MORE PARTICULARLY DESCRIBED AS FOLLOWS:
 From the Southeast Corner of said Lot 8; thence North 74°51'45" West 57.25 feet; thence South 89°46'34" West 175.70 feet; thence North 00°13'52" West 15.00 feet; thence North 89°46'34" East 177.72 feet; thence South 74°51'54" East 50.64 feet; thence South 14°47'04" East 17.31 feet to the point of beginning proper, having an area of 3,459.86 square feet, 0.08 acres more or less.



VICINITY MAP
(NOT TO SCALE)



SAGE MEADOWS PROPERTY OWNERS ASSOCIATION



BRANDON WOOD, P.E., P.S.
 ENGINEERING & SURVEYING
 112 CR 7823
 BROOKLAND, AR 72417
 PH: (870) 830-7504
 FAX: (870) 872-0023
 WWW.BWOODENGINEERING.COM

ABANDONMENT PLAT
 FOR LOTS 8 & 9 OF THE VILLAS AT SAGE MEADOWS PHASE II
 JONESBORO, CRAIGHEAD COUNTY, ARKANSAS
 CLIENT: BRIAN & LINDY CARTER

BRANDON G. WOOD
 ARKANSAS SURVEYOR
 #1817

DATE: 3/17/17
 REV:
 DRAWN BY: BOW

