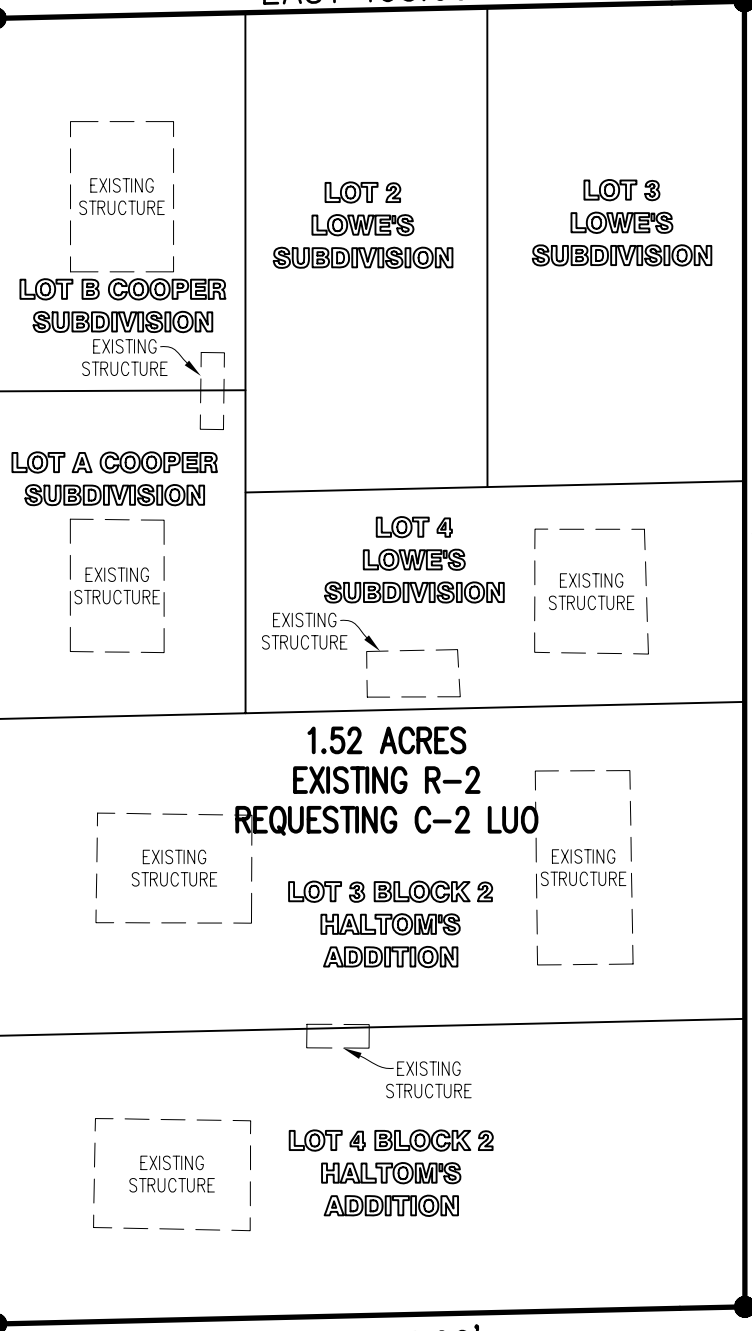


C-5
MATTHEWS AVE.
 (NO RECORD STREET WIDTH)

ASPHALT PAVING

EAST 195.00'



SOUTH 340.00'

PATRICK ST.
 (NO RECORD STREET WIDTH)

HALTOM ST.
 (60' RIGHT-OF-WAY)

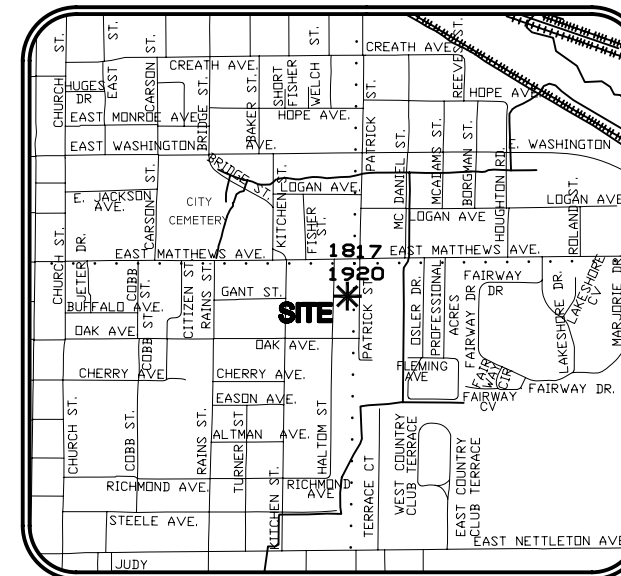
NORTH 340.00'

WEST 195.00'

R-2

C-2 LU-O TO INCLUDE:

- GOVERNMENT SERVICE
- GOLF COURSE
- HOSPITAL
- HOTEL OR MOTEL
- LIBRARY
- MEDICAL SERVICE / OFFICE
- MUSEUM
- NURSING HOME
- OFFICE / GENERAL
- PARKING LOT / COMMERCIAL
- PARKS AND RECREATION
- POST OFFICE
- RESTAURANT / FAST FOOD
- RESTAURANT / GENERAL
- RETAIL / SERVICE
- SAFETY SERVICES
- SINGLE-FAMILY DETACHED
- SINGLE-FAMILY ATTACHED
- DUPLEX, TRIPLEX, 4-PLEX
- LOFT APARTMENT
- AUTOMATED TELLER MACHINE
- BANK OR FINANCIAL INSTITUTION
- BED AND BREAKFAST
- CEMETERY
- CHURCH
- COLLEGE OR UNIVERSITY
- DAY CARE, LIMITED (FAMILY HOME)



VICINITY MAP
 NOT TO SCALE

BEARINGS BASED ON PREVIOUS SURVEY
 DATED 03/05/02.

CERTIFICATE OF SURVEY:

THIS IS TO CERTIFY THAT HAYWOOD, KENWARD, BARE AND ASSOCIATES INC., PROFESSIONAL LAND SURVEYORS HAVE SURVEYED THE FOLLOWING PARCEL OF LAND:
 LOTS "A" AND "B" OF COOPER SUBDIVISION OF LOT 1 OF LOWE'S SUBDIVISION OF LOTS 1 AND 2, BLOCK 2 OF HALTOM'S ADDITION, AND LOTS 2, 3 AND 4 OF LOWE'S SUBDIVISION OF LOTS 1 AND 2, BLOCK 2 OF HALTOM'S ADDITION AND LOTS 3 AND 4, BLOCK 2 OF HALTOM'S ADDITION TO THE CITY OF JONESBORO, CRAIGHEAD COUNTY, ARKANSAS, CONTAINING 1.52 ACRES MORE OR LESS, SUBJECT TO ALL RIGHTS-OF-WAY AND EASEMENTS OF RECORD.

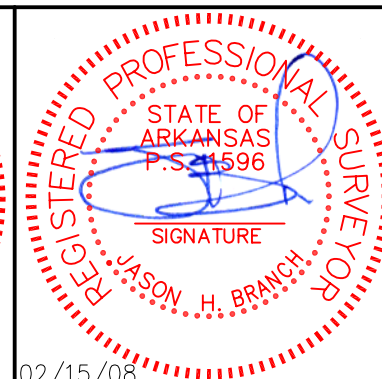
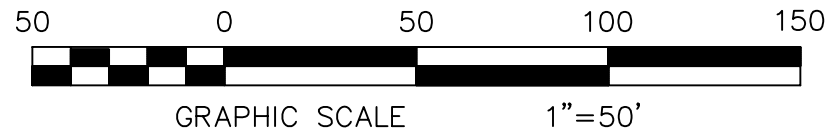
OWNERS CERTIFICATION:

I HEREBY CERTIFY THAT I AM THE OWNER OF THE ABOVE DESCRIBED PROPERTY AND I HEREBY REQUEST A REZONING FROM **(R-2) MULTI-FAMILY LOW DENSITY DISTRICT TO (C-2 LU-O) DOWNTOWN FRINGE COMMERCIAL DISTRICT - LIMITED USE OVERLAY**

SIGNED THIS 15TH DAY OF FEBRUARY, 2008

Kenneth R. Gibson
 KENNETH R. GIBSON KCL2, LLC

Cynthia D. Gibson
 CYNTHIA D. GIBSON KCL2, LLC



02/15/08

CLIENT
KCL2, LLC

COPYRIGHT 2008, ALL RIGHTS RESERVED

REZONING PLAT

LOTS "A" AND "B" OF COOPER SUBDIVISION OF LOT 1 OF LOWE'S SUBDIVISION OF LOTS 1 AND 2, BLOCK 2 OF HALTOM'S ADDITION, AND LOTS 2, 3 AND 4 OF LOWE'S SUBDIVISION OF LOTS 1 AND 2, BLOCK 2 OF HALTOM'S ADDITION AND LOTS 3 AND 4, BLOCK 2 OF HALTOM'S ADDITION TO THE CITY OF JONESBORO, CRAIGHEAD COUNTY, ARKANSAS

HAYWOOD, KENWARD, BARE & ASSOCIATES, INC.
 CIVIL ENGINEERING - SURVEYING - PLANNING
 1801 LATOURETTE DRIVE
 JONESBORO, ARKANSAS 72404
 TEL 870-932-2019 FAX 870-932-1076

REVISIONS		
DATE	BY	DESCRIPTION
SURVEY INDEX CODE		
PROJECT NO. G012-0002-12		
DRAWN BY JJN	CHECKED BY JHB	
SHEET 1 OF 1	SCALE 1"=50'	
DATE 02/15/08	DRAWING NO. B-152	