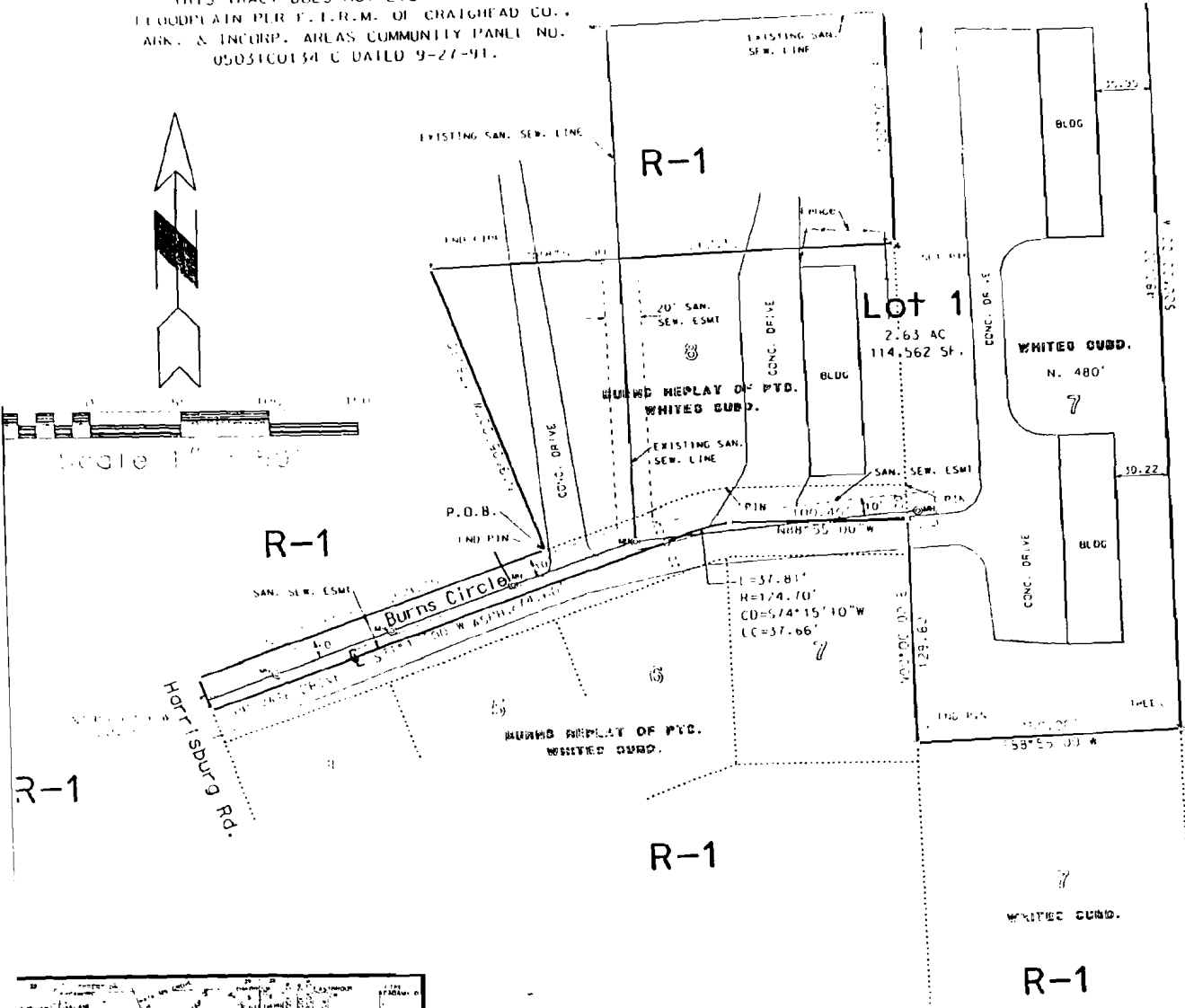


THIS TRACT DOES NOT LIE IN 100 YR. FLOODPLAIN PER F.F.R.M. OF CRAIGHEAD CO., ARK. & INCLRP. AREAS COMMUNITY PANEL NO. 0503160134 C DATED 9-27-91.



LEGAL DESCRIPTION:
 Lot 8 and the North 20 ft. of Burns Circle of Burn's Replat of Parts of Lots 2-6 White's Subdivision, Jonesboro, Arkansas and the North 480 ft of Lot 7 of White's Subdivision, Jonesboro, Arkansas more particularly described as follows: Begin at the Southwest corner of Lot 8 of said Burn's Replat of part of White's Subd. then run N 19°05'00" W a distance of 175.10 ft. to a point; then run N 88°55'00" E a distance of 262.50 ft. to a point; then run N 00°00'00" E a distance of 190.40 ft. to a point; then run N 88°55'00" E a distance of 150.00 ft. to a point; then run S 00°00'00" W a distance of 480.00 ft. to a point; then run S 88°55'00" W a distance of 150.00 ft. to a point; then run N 00°00'00" E a distance of 129.60 ft. to a point; then run N 88°55'00" W a distance of 100.40 ft. to a point on a curve; then following a curve to the left, said curve having a radius of 124.70 ft., a Δ of 37.81 ft., a chord of 37.66 ft. and a chord bearing of S 74°15'10" W to a point; then run S 74°15'10" W a distance of 214.60 ft. to a point; then run N 19°05'00" W a distance of 20.00 ft. to a point; then run N 71°17'00" E a distance of 209.10 ft. to a point; said point being the POINT OF BEGINNING, containing 2.63 acres.

CERTIFICATE OF SURVEY:
 To all parties interested in title to these premises: I hereby certify that we have prior to this day made a survey of the above described property as shown on the Plat of Survey hereon. The property lines and corner monuments, to the best of my knowledge and ability, are correctly established. The improvements are as shown on the Plat of Survey. Encroachments, if any, as disclosed by Survey, are shown hereon.

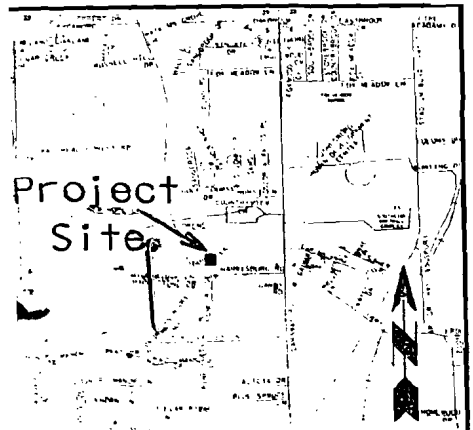
BY *George Hamm* 11/16/97
 OF GEORGE HAMM, R.L.S. #1273 DATE

ROBIN NIX REPLAT OF LOT 8 & N.20 FT. OF
BURN'S CIRCLE OF BURN'S REPLAT OF
PTS. OF LOTS 2-6 WHITE'S SUBD. & THE
N.480 FT. OF LOT 7 OF WHITE'S SUBD.
JONESBORO, ARKANSAS

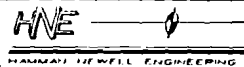
EXISTING R-1 ZONING
REQUESTED R-2 ZONING

OWNER'S CERTIFICATION:
 We hereby certify that we are the owners of the property shown and described hereon, that we adopt the plan of subdivision and dedicate perpetual use of all streets and easements as noted.

Rob Nix



REVISED 11-12-97: PER MAPC COMMENTS - SANITARY SEWER ADDED PER INFORMATION FROM F.W. RECORDS.

| | | | |
|---|--|---------|-----------|
|  ENGINEERS SURVEYORS PLANNERS HAMM HERRILL ENGINEERING | 2311 East McJannet Jonesboro, Arkansas 72401 Telephone: (501) 832-7080 | | |
| | PL ZONING PLAT & REPLAT FOR ROBIN NIX JONESBORO, ARKANSAS | | |
| Date | Scale | Job No. | Sheet No. |
| 10-16-97 | 1"=10' | 9723 | |
| Section | Township | Range | County |