

Vector Disease Control, Inc.

Mosquito Surveillance and Control Report

for the

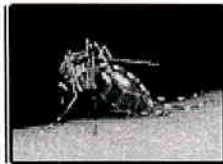
City of Jonesboro

July 2013

2221 N. Church St. Jonesboro, AR 72401

T-870.933.6939 F- 870.933.0122

www.vdci.net





City of Jonesboro Activity Report

July 2013

Vector Disease Control, Inc. (VDCI) provides a proven, scientific approach to mosquito control for the city of Jonesboro. VDCI's operations include larval and adult mosquito surveillance followed by the application of larvicides and adulticides. In addition, our office responds to service requests from the public.

Mosquito Surveillance

VDCI has utilized a total of thirteen (15) New Jersey light traps placed in residential and recreational areas throughout Jonesboro during this reporting period. These traps collected an average of 24.2 mosquitoes per trap night (1,551 total mosquitoes) during this time. There have been a total of 4 mosquito species collected, with *Anopheles quadrimaculatus* being the most predominant species.

Larval Control Activity

Permanent water, flood water, artificial containers, and drainage system sites are inspected for larval mosquito breeding on a regular basis. In total, 24 site inspections found the presence of mosquito larvae. As a result of these inspections 65.5 ounces of the larvicide Aquabac 200G was applied to these mosquito breeding sites. Additionally, VDCI is continuing to eliminate breeding habitats for artificial container mosquitoes by targeting bird baths, buckets, tires, etc.

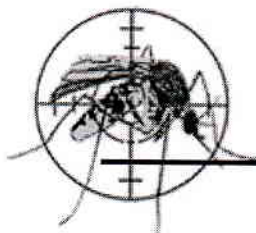


ADULT MOSQUITO CONTROL ACTIVITY

In response to community events and mosquito surveillance data, VDCI applied Adulthoodicide (19) truck nights for this reporting period. All adulthoodicide ULV applications Were made with truck-mounted ULV units equipped with GPS-enabled monitors. During this report period, a total of 1,502.1 spray miles (64,809.6 acres) was treated With a total of 448.6 gallons of adulthoodicide in residential and recreational areas. In Addition to routine truck spraying, VDCI has responded to 153 service request and Adulthoodicided all parks and special events during this month.

Summary

During this reporting period, VDCI has continued to provide exceptional control of larval and adult mosquito populations. VDCI will remain diligent in our surveillance and control activities to prevent a significant increase in the mosquito population. Based on recent weather conditions VDCI expects the trend of routine adulthoodiciding and larviciding to continue. However, if VDCI detects a significant rise in the mosquito population we will increase larval and adult control. As always, VDCI welcomes residents with any mosquito-related questions or concerns to contact VDCI's Jonesboro office directly at 870.933.6939.



Adult Mosquito Surveillance Report

Start Date: 7/1/2013

End Date: 7/31/2013

Jonesboro

Trap Location	Date Trap Set	Trap Type	Mosquito Species	No. Collected
Treatment Area 1 Collections				
Shady Lane	7/3/2013	NJ Light Trap	<i>Anopheles quadrimaculatus</i>	16
Shady Lane	7/10/2013	NJ Light Trap	<i>Anopheles quadrimaculatus</i>	9
Shady Lane	7/16/2013	NJ Light Trap	<i>Anopheles quadrimaculatus</i>	36
			<i>Psorophora columbiae</i>	5
Shady Lane	7/30/2013	NJ Light Trap	<i>Anopheles quadrimaculatus</i>	16
			<i>Psorophora columbiae</i>	9
Trap Total				91 (Avg. 22.8)
Sugar Ridge	7/3/2013	NJ Light Trap	<i>Aedes vexans</i>	1
			<i>Anopheles quadrimaculatus</i>	2
Sugar Ridge	7/10/2013	NJ Light Trap	<i>Aedes vexans</i>	1
			<i>Anopheles quadrimaculatus</i>	2
Sugar Ridge	7/16/2013	NJ Light Trap	No Mosquitoes	0
Sugar Ridge	7/26/2013	NJ Light Trap	<i>Psorophora columbiae</i>	1
Sugar Ridge	7/30/2013	NJ Light Trap	<i>Aedes vexans</i>	1
			<i>Psorophora columbiae</i>	1
Trap Total				9 (Avg. 1.8)
Treatment Area 2 Collections				
Strawfloor	7/3/2013	NJ Light Trap	<i>Anopheles quadrimaculatus</i>	5
Strawfloor	7/10/2013	NJ Light Trap	<i>Anopheles quadrimaculatus</i>	2
Strawfloor	7/16/2013	NJ Light Trap	<i>Aedes vexans</i>	3
			<i>Anopheles quadrimaculatus</i>	4
Strawfloor	7/26/2013	NJ Light Trap	<i>Anopheles quadrimaculatus</i>	8
Strawfloor	7/30/2013	NJ Light Trap	<i>Anopheles quadrimaculatus</i>	6
Trap Total				28 (Avg. 5.6)
Treatment Area 3 Collections				
Ridge Point	7/3/2013	NJ Light Trap	<i>Anopheles quadrimaculatus</i>	3
			<i>Psorophora columbiae</i>	1

Vector Disease Control International
 2221 N. Church Street
 Jonesboro, AR 72402
 800-413-4445

Trap Location	Date Trap Set	Trap Type	Mosquito Species	No. Collected
Ridge Point	7/16/2013	NJ Light Trap	<i>Anopheles quadrimaculatus</i>	1
Ridge Point	7/26/2013	NJ Light Trap	<i>Anopheles quadrimaculatus</i>	144
Trap Total				149 (Avg. 49.7)
Ridge Pointe	7/10/2013	NJ Light Trap	<i>Anopheles quadrimaculatus</i>	2
			<i>Coquillettidia perturbans</i>	4
Ridge Pointe	7/30/2013	NJ Light Trap	<i>Anopheles quadrimaculatus</i>	51
Trap Total				57 (Avg. 28.5)

Treatment Area 4 Collections

Briarcrest	7/26/2013	NJ Light Trap	<i>Anopheles quadrimaculatus</i>	35
Trap Total				35 (Avg. 35)
Part Ridge	7/3/2013	NJ Light Trap	<i>Anopheles quadrimaculatus</i>	10
			<i>Psorophora columbiae</i>	6
Part Ridge	7/10/2013	NJ Light Trap	<i>Aedes vexans</i>	1
			<i>Anopheles quadrimaculatus</i>	7
			<i>Coquillettidia perturbans</i>	3
Part Ridge	7/16/2013	NJ Light Trap	<i>Anopheles quadrimaculatus</i>	10
Part Ridge	7/26/2013	NJ Light Trap	<i>Anopheles quadrimaculatus</i>	34
Part Ridge	7/30/2013	NJ Light Trap	<i>Anopheles punctipennis</i>	20
Trap Total				91 (Avg. 18.2)

Treatment Area 5 Collections

Cottage Home Rd	7/10/2013	NJ Light Trap	<i>Anopheles quadrimaculatus</i>	6
Trap Total				6 (Avg. 6)
Derby Dr.	7/3/2013	NJ Light Trap	<i>Aedes vexans</i>	1
			<i>Anopheles quadrimaculatus</i>	5
Derby Dr.	7/10/2013	NJ Light Trap	<i>Anopheles quadrimaculatus</i>	14
Derby Dr.	7/16/2013	NJ Light Trap	<i>Anopheles quadrimaculatus</i>	4
Derby Dr.	7/26/2013	NJ Light Trap	<i>Anopheles quadrimaculatus</i>	6
Derby Dr.	7/30/2013	NJ Light Trap	<i>Anopheles quadrimaculatus</i>	1
Trap Total				31 (Avg. 6.2)
Frog Pond	7/3/2013	NJ Light Trap	<i>Anopheles quadrimaculatus</i>	10
			<i>Psorophora columbiae</i>	7
Frog Pond	7/10/2013	NJ Light Trap	<i>Anopheles quadrimaculatus</i>	112
			<i>Coquillettidia perturbans</i>	16

Trap Location	Date Trap Set	Trap Type	Mosquito Species	No. Collected
Frog Pond	7/16/2013	NJ Light Trap	<i>Anopheles quadrimaculatus</i>	60
Frog Pond	7/30/2013	NJ Light Trap	<i>Anopheles quadrimaculatus</i>	6
			<i>Psorophora columbiae</i>	13
Trap Total				224 (Avg. 56)

Treatment Area 6 Collections

Oakhill	7/3/2013	NJ Light Trap	<i>Anopheles quadrimaculatus</i>	31
			<i>Psorophora columbiae</i>	4
Oakhill	7/10/2013	NJ Light Trap	<i>Anopheles quadrimaculatus</i>	76
Oakhill	7/16/2013	NJ Light Trap	<i>Anopheles quadrimaculatus</i>	148
Oakhill	7/26/2013	NJ Light Trap	<i>Anopheles quadrimaculatus</i>	17
Oakhill	7/30/2013	NJ Light Trap	<i>Anopheles quadrimaculatus</i>	10
Trap Total				286 (Avg. 57.2)
Pleasant View	7/3/2013	NJ Light Trap	<i>Anopheles quadrimaculatus</i>	10
Pleasant View	7/10/2013	NJ Light Trap	<i>Anopheles quadrimaculatus</i>	21
Pleasant View	7/16/2013	NJ Light Trap	<i>Anopheles quadrimaculatus</i>	26
Pleasant View	7/26/2013	NJ Light Trap	<i>Anopheles quadrimaculatus</i>	33
Pleasant View	7/30/2013	NJ Light Trap	<i>Anopheles quadrimaculatus</i>	21
Trap Total				111 (Avg. 22.2)

Treatment Area 8 Collections

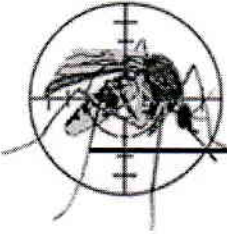
Briarcrest	7/3/2013	NJ Light Trap	<i>Anopheles quadrimaculatus</i>	10
Briarcrest	7/10/2013	NJ Light Trap	<i>Anopheles quadrimaculatus</i>	30
Briarcrest	7/16/2013	NJ Light Trap	<i>Aedes vexans</i>	1
			<i>Anopheles quadrimaculatus</i>	12
Briarcrest	7/30/2013	NJ Light Trap	<i>Anopheles quadrimaculatus</i>	11
Trap Total				64 (Avg. 16)
Matthew	7/16/2013	NJ Light Trap	<i>Aedes vexans</i>	1
			<i>Anopheles punctipennis</i>	24
Matthew	7/26/2013	NJ Light Trap	<i>Anopheles quadrimaculatus</i>	35
Matthew	7/30/2013	NJ Light Trap	<i>Anopheles quadrimaculatus</i>	17
Trap Total				77 (Avg. 25.7)
Matthews	7/3/2013	NJ Light Trap	<i>Anopheles quadrimaculatus</i>	9
Matthews	7/10/2013	NJ Light Trap	<i>Anopheles quadrimaculatus</i>	55
Trap Total				64 (Avg. 32)

Vector Disease Control International
 2221 N. Church Street
 Jonesboro, AR 72402
 800-413-4445

Trap Location	Date Trap Set	Trap Type	Mosquito Species	No. Collected	
Treatment Area 9 Collections					
Cottage Home Rd	7/10/2013	NJ Light Trap	<i>Coquillettidia perturbans</i>	6	
				Trap Total	6 (Avg. 6)
Cottage Home Rd.	7/3/2013	NJ Light Trap	<i>Anopheles quadrimaculatus</i>	12	
				<i>Psorophora columbiae</i>	4
Cottage Home Rd.	7/16/2013	NJ Light Trap	<i>Anopheles quadrimaculatus</i>	5	
				<i>Psorophora columbiae</i>	7
Cottage Home Rd.	7/26/2013	NJ Light Trap	<i>Anopheles quadrimaculatus</i>	7	
				<i>Psorophora columbiae</i>	2
Cottage Home Rd.	7/30/2013	NJ Light Trap	<i>Anopheles quadrimaculatus</i>	2	
				Trap Total	39 (Avg. 9.8)

Treatment Area 10 Collections					
Quail Ridge	7/3/2013	NJ Light Trap	<i>Aedes vexans</i>	5	
				<i>Anopheles quadrimaculatus</i>	26
Quail Ridge	7/10/2013	NJ Light Trap	<i>Anopheles quadrimaculatus</i>	60	
Quail Ridge	7/16/2013	NJ Light Trap	<i>Anopheles quadrimaculatus</i>	11	
Quail Ridge	7/26/2013	NJ Light Trap	<i>Anopheles quadrimaculatus</i>	50	
Quail Ridge	7/30/2013	NJ Light Trap	<i>Anopheles quadrimaculatus</i>	31	
				Trap Total	183 (Avg. 36.6)

Overall Trap Total	1,551
Overall Trap Average	24.2



Larval Surveillance Data

Start Date: 7/1/2013

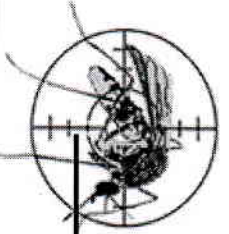
End Date: 7/31/2013

Jonesboro

Date	Location	Habitat	No. Dipped	Larvicided	Mosquito Species	No. ID'd
Treatment Area 1 Sites Inspected						
7/1/2013	700 Steele st.	Ditch	0	No		
7/11/2013	2906 Scottwood	Ditch	5	Yes		
	3112 Sage Oakes	Ditch	0	No		
	4305 Sagemeadow	Ditch	0	No		
	4791 Lochmoore	Ditch	0	No		
7/16/2013		Ditch	0	No		
	1021 Neil Dr.	Ditch	0	No		
	1506 Magnolia	Ditch	0	No		
	3505 Airport	Ditch	4	Yes		
	Race St.	Ditch	100	Yes		
Total Sites Inspected in Zone 1: 10						
Treatment Area 2 Sites Inspected						
7/15/2013	200 Woody Lane	Ditch	2	Yes		
7/16/2013	735 Valley Dr.	Ditch	2	Yes		
Total Sites Inspected in Zone 2: 2						
Treatment Area 7 Sites Inspected						
7/15/2013	1111 Mayes	Ditch	0	No		
	1500 Magnolia	Ditch	0	No		
	1609 Magnolia	Ditch	0	No		
	1906 Patrie	Ditch	0	No		
Total Sites Inspected in Zone 7: 4						
Treatment Area 10 Sites Inspected						
7/18/2013	2700 Covey Dr.	Ditch	4	Yes		
	3208 Turtle Creek	Ditch & Culvert	0	No		

Vector Disease Control International
 2221 N. Church Street
 Jonesboro, AR 72402
 800-413-4445

Date	Location	Habitat	No. Dipped	Larvicided	Mosquito Species	No. ID'd
7/18/2013	541 Keller Chapel	Culvert	0	No		
Total Sites Inspected in Zone 10: 3						
Treatment Area 11 Sites Inspected						
7/16/2013	1419 Larkwood	Ditch	0	No		
	1601 Stadium Blvd	Ditch	0	No		
	2902 Schoolwood	Ditch	0	No		
	3114 Race	Ditch	0	No		
	4102 Corner stone	Ditch	0	No		
	4414 Mockernut Lane	Ditch	0	No		
	4800 Frisco	Ditch	0	No		
Total Sites Inspected in Zone 11: 7						



Ground Adultericide Applications

Start Date: 7/1/2013 End Date: 7/31/2013

Jonesboro

Treatment Area 1 Applications

Month	Date	Municipality	Chemical	Mix Ratio	Trip Miles	Spray Miles	Spray Acres	Gallons Sprayed
July 2013	7/2/2013		Permanone 31-66 (432-1250)	1:4	45.0	25.2	914.0	5.1
	7/2/2013		Permanone 31-66 (432-1250)	1:4	35.0	22.5	816.0	5.6
	7/4/2013		Permanone 31-66 (432-1250)	1:4	40.0	20.8	755.0	4.4
	7/4/2013		Permanone 31-66 (432-1250)	1:4	30.0	3.6	130.0	0.7
	7/29/2013		Permanone 31-66 (432-1250)	1:3	39.0	11.8	428.0	4.0
<i>Total Permanone 31-66 Applied:</i>								19.7
July 2013	7/31/2013		Perm-X UL 30-30 (655-811)	2.5 - 1	45.0	16.2	588.0	5.0
<i>Total Perm-X UL 30-30 Applied:</i>								5.0

Treatment Area 2 Applications

Zone 1 Totals: 234.0 100.1 3,631.0 24.7								
July 2013	7/1/2013		Permanone 31-66 (432-1250)	1:4	45.0	26.3	954.0	8.3

Vector Disease Control International

2221 N. Church Street
Jonesboro, AR 72402
800-413-4445

Month	Date	Municipality	Chemical	Mix Ratio	Trip Miles	Spray Miles	Spray Acres	Gallons Sprayed
July 2013	7/11/2013		Permanone 31-66 (432-1250)	1:4	61.0	25.2	914.0	7.4
	7/13/2013		Permanone 31-66 (432-1250)	1:4	41.0	76.1	582.0	37.9
	7/22/2013		Permanone 31-66 (432-1250)	1:3	49.0	22.9	830.0	5.5
				<i>Total Permanone 31-66 Applied:</i>				
				<u>Zone 2 Totals: 196.0 150.5 3,280.0 59.1</u>				

Treatment Area 3 Applications								
July 2013	7/19/2013		Permanone 31-66 (432-1250)	1:3	45.0	21.8	791.0	6.0
	7/26/2013		Permanone 31-66 (432-1250)	1:3	81.0	35.8	1299.0	8.5
	7/29/2013		Permanone 31-66 (432-1250)	1:3	48.0	25.4	921.0	5.7
				<i>Total Permanone 31-66 Applied:</i>				
				<u>Zone 3 Totals: 174.0 83.0 3,011.0 20.3</u>				

Treatment Area 4 Applications								
July 2013	7/1/2013		Permanone 31-66 (432-1250)	1:4	51.0	40.9	14844.0	7.4
	7/2/2013		Permanone 31-66 (432-1250)	1:4	52.0	0.0	0.0	0.0
	7/3/2013		Permanone 31-66 (432-1250)	1:4	50.0	29.7	1071.0	8.0

Month	Date	Municipality	Chemical	Mix Ratio	Trip Miles	Spray Miles	Spray Acres	Gallons Sprayed
July 2013	7/5/2013		Permanone 31-66 (432-1250)	1:4	40.0	25.2	914.0	4.9
	7/15/2013		Permanone 31-66 (432-1250)	1:4	59.0	29.5	1070.0	8.0
	7/18/2013		Permanone 31-66 (432-1250)	1:3	144.0	69.8	2531.0	17.6
	7/19/2013		Permanone 31-66 (432-1250)	1:3	104.0	62.1	2250.0	15.9
	7/24/2013		Permanone 31-66 (432-1250)	1:3	51.0	19.5	707.0	50.0
	7/25/2013		Permanone 31-66 (432-1250)	1:3	63.0	46.3	1679.0	9.6
	7/26/2013		Permanone 31-66 (432-1250)	1:3	61.0	33.3	1207.0	7.7
	7/29/2013		Permanone 31-66 (432-1250)	1:3	36.0	23.5	852.0	6.7
	<i>Total Permanone 31-66 Applied:</i>							

Zone 4 Totals: 711.0 379.8 27,125.0 135.8

Treatment Area 5 Applications

July 2013	7/1/2013		Permanone 31-66 (432-1250)	1:4	54.0	34.3	1245.0	7.3
	7/8/2013		Permanone 31-66 (432-1250)	1:4	40.0	33.1	1201.0	9.0
	7/11/2013		Permanone 31-66 (432-1250)	1:4	48.0	27.4	994.0	7.4

Vector Disease Control International

Month	Date	Municipality	Chemical	Mix Ratio	Trip Miles	Spray Miles	Spray Acres	Gallons Sprayed
July 2013	7/12/2013		Permanone 31-66 (432-1250)	1:4	65.0	35.9	1301.0	8.4
	7/17/2013		Permanone 31-66 (432-1250)	1:3	46.0	32.5	1179.0	7.3
	7/19/2013		Permanone 31-66 (432-1250)	1:3	48.0	35.7	1294.0	8.9
	7/22/2013		Permanone 31-66 (432-1250)	1:3	56.0	26.3	954.0	5.9
	7/24/2013		Permanone 31-66 (432-1250)	1:3	73.0	32.4	1176.0	7.5
7/26/2013		Permanone 31-66 (432-1250)	1:3	68.0	52.2	1894.0	11.3	
7/27/2013		Permanone 31-66 (432-1250)	1:3	0.0	0.0	0.0	0.0	
<i>Total Permanone 31-66 Applied:</i>								73.1
Zone 5 Totals:				498.0	309.8	11,238.0	73.1	

Treatment Area 6 Applications

July 2013	7/8/2013		Permanone 31-66 (432-1250)	1:4	41.0	21.1	765.0	5.1
	7/12/2013		Permanone 31-66 (432-1250)	1:4	70.0	17.3	627.0	5.2
	7/26/2013		Permanone 31-66 (432-1250)	1:3	52.0	31.0	1125.0	8.2

<i>Total Permanone 31-66 Applied:</i>								18.5
Zone 6 Totals:				163.0	69.4	2,517.0	18.5	

Vector Disease Control International

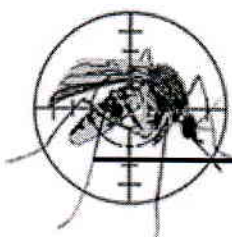
2221 N. Church Street
Jonesboro, AR 72402
800-413-4445

Month	Date	Municipality	Chemical	Mix Ratio	Trip Miles	Spray Miles	Spray Acres	Gallons Sprayed
Treatment Area 8 Applications								
July 2013	7/3/2013		Permanone 31-66 (432-1250)	1:4	34.0	16.2	587.0	7.7
	7/8/2013		Permanone 31-66 (432-1250)	1:4	52.0	19.3	700.0	8.3
	7/12/2013		Permanone 31-66 (432-1250)	1:4	52.0	37.8	1371.0	8.8
	7/15/2013		Permanone 31-66 (432-1250)	1:4	44.0	19.6	711.0	6.4
	7/26/2013		Permanone 31-66 (432-1250)	1:3	63.0	48.5	1760.0	10.7
	7/26/2013		Permanone 31-66 (432-1250)	1:3	0.0	0.0	0.0	0.0
					<i>Total Permanone 31-66 Applied:</i>			41.8
July 2013	7/31/2013		Perm-X UL 30-30 (655-811)	2.5 - 1	44.0	33.6	1219.0	7.2
					<i>Total Perm-X UL 30-30 Applied:</i>			7.2
Treatment Area 9 Applications								
July 2013	7/17/2013		Permanone 31-66 (432-1250)	1:3	56.0	24.4	885.0	6.5
					<i>Total Permanone 31-66 Applied:</i>			6.5
				Zone 9 Totals:	56.0	24.4	885.0	6.5
Treatment Area 10 Applications								

Month	Date	Municipality	Chemical	Mix Ratio	Trip Miles	Spray Miles	Spray Acres	Gallons Sprayed
July 2013	7/5/2013		Permanone 31-66 (432-1250)	1:4	33.0	18.8	682.0	4.3
	7/8/2013		Permanone 31-66 (432-1250)	1:4	60.0	32.1	1164.0	8.9
	7/15/2013		Permanone 31-66 (432-1250)	1:4	61.0	42.8	1552.0	9.5
	7/25/2013		Permanone 31-66 (432-1250)	1:3	56.0	30.9	1119.0	8.7
<i>Total Permanone 31-66 Applied:</i>								
					<u>31.4</u>			
Treatment Area II Applications								
July 2013	7/1/2013		Permanone 31-66 (432-1250)	1:4	37.0	19.6	711.0	7.8
	7/18/2013		Permanone 31-66 (432-1250)	1:3	49.0	15.0	543.0	5.3
	7/24/2013		Permanone 31-66 (432-1250)	1:3	44.0	25.1	910.0	9.3
<i>Total Permanone 31-66 Applied:</i>								
					<u>22.4</u>			
July 2013	7/31/2013		Perm-X UL 30-30 (655-811)	2.5 - 1	43.0	25.8	93.6	7.8
<i>Total Perm-X UL 30-30 Applied:</i>								
					<u>7.8</u>			
					<u>Zone II Totals: 173.0 85.5 2,257.6 30.2</u>			
					<u>Grand Totals: 2,704.0 1,502.1 64,809.6 448.6</u>			

Vector Disease Control International

2221 N. Church Street
Jonesboro, AR 72402
800-413-4445



Larvicide Applications

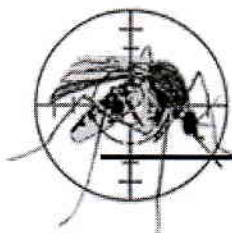
Start Date: 7/1/2013

End Date: 7/31/2013

Jonesboro

Date	Location	Habitat	No. of Larvae	Larvicide	Amount Applied (oz.)	Area Treated (sq ft)
Treatment Area 1 Applications						
7/11/2013	2906 Scottwood	Ditch	5	Aquabac 200G (62637-3)	8.0	2,178.0
7/16/2013	3505 Airport	Ditch	4	Aquabac 200G (62637-3)	4.0	1,089.0
	Race St.	Ditch	100	Aquabac 200G (62637-3)	32.0	8,712.0
Total Ounces Applied:					44.0	11,979.0
						0.3 acres
Total Larvicide Applied in Zone 1:					44.0	11,979.0
						0.3 acres
Treatment Area 2 Applications						
7/15/2013	200 Woody Lane	Ditch	2	Aquabac 200G (62637-3)	1.0	272.3
7/16/2013	735 Valley Dr.	Ditch	2	Aquabac 200G (62637-3)	0.5	136.1
Total Ounces Applied:					1.5	408.4
						0.0 acres
Total Larvicide Applied in Zone 2:					1.5	408.4
						0.0 acres
Treatment Area 10 Applications						
7/18/2013	2700 Covey Dr.	Ditch	4	Aquabac 200G (62637-3)	20.0	5,445.0
Total Ounces Applied:					20.0	5,445.0
						0.1 acres
Total Larvicide Applied in Zone 10:					20.0	5,445.0
						0.1 acres
Overall Total Ounces Applied					65.5	17,832.4
						0.4 acres

Vector Disease Control International
 2221 N. Church Street
 Jonesboro, AR 72402
 800-413-4445



Service Request Adulticide Applications

Start Date: 7/1/2013

End Date: 7/31/2013

Jonesboro

Date	Location	Chemical	Mix Ratio	Amount Applied	Area Treated
Treatment Area 0 Applications					
7/24/2013				0.0	0.00 acres
				<i>Total Applied:</i>	0.0
				(0.0 gals)	0.00 acres
6/28/2013	4126 Chapel Hill Rd.	Permanone 30-30 (432-1235)	1:5	6.0	0.25 acres
				<i>Total Permanone 30-30 Applied:</i>	6.0
				(0.0 gals)	0.25 acres
7/3/2013	209 Hunt Cliff	Permanone 31-66 (432-1250)	1:4	14.4	0.50 acres
7/3/2013	212 Windover	Permanone 31-66 (432-1250)	1:4	12.0	0.50 acres
7/3/2013	2702 Nixlake Dr.	Permanone 31-66 (432-1250)	1:4	28.8	0.75 acres
7/4/2013	1204 Princeton	Permanone 31-66 (432-1250)	1:4	12.0	0.50 acres
7/8/2013	3626 Flemon	Permanone 31-66 (432-1250)	1:4	4.0	0.50 acres
7/9/2013	3206 Ashwood	Permanone 31-66 (432-1250)	1:5	4.0	0.50 acres
7/11/2013	4906 East Highland	Permanone 31-66 (432-1250)	1:4	20.0	0.25 acres
7/19/2013		Permanone 31-66 (432-1250)	1:3	180.0	40.00 acres
7/19/2013	3212 N. Culberhouse	Permanone 31-66 (432-1250)	1:3	24.0	2.00 acres
7/22/2013	3705 Woodsprings Rd.	Permanone 31-66 (432-1250)	1:3	9.0	5.00 acres
				<i>Total Permanone 31-66 Applied:</i>	308.2
				(2.4 gals)	50.50 acres
Treatment Area 1 Applications					
7/2/2013	209 Floyd	Permanone 31-66 (432-1250)	1:4	8.0	0.25 acres
7/9/2013	909 Sylvan Hill	Permanone 31-66 (432-1250)	1:4	24.0	0.25 acres
7/11/2013	2304 Evelyn	Permanone 31-66 (432-1250)	1:4	16.0	0.25 acres
7/15/2013	3300 Flemon	Permanone 31-66 (432-1250)	1:3	3.0	0.50 acres

Vector Disease Control International
 2221 N. Church Street
 Jonesboro, AR 72402
 800-413-4445

Date	Location	Chemical	Mix Ratio	Amount Applied	Area Treated
7/16/2013	1600 Jones	Permanone 31-66 (432-1250)	1:3	21.0	4.00 acres
7/24/2013	101 Shady Park Lane	Permanone 31-66 (432-1250)	1:3	3.0	1.00 acres
7/25/2013	1304 Wendy Linda	Permanone 31-66 (432-1250)	1:4	6.0	1.00 acres
Total Permanone 31-66 Applied:				81.0 <i>(0.6 gals)</i>	7.25 acres

Treatment Area 2 Applications

7/27/2013	21 plantation	Permanone 10EC (432-1132)	1:2	126.0	1.00 acres
Total Permanone 10EC Applied:				126.0 <i>(1.0 gals)</i>	1.00 acres
7/9/2013	1701 Rich	Permanone 31-66 (432-1250)	1:5	24.0	0.25 acres
7/11/2013	108 E. Gordon St.	Permanone 31-66 (432-1250)	1:4	18.0	0.50 acres
7/11/2013	3106 Woodsprings	Permanone 31-66 (432-1250)	1:4	16.0	0.25 acres
7/11/2013	1707 Smoot	Permanone 31-66 (432-1250)	1:5	12.0	0.25 acres
7/15/2013	1707 Smoot Dr.	Permanone 31-66 (432-1250)	1:3	6.0	0.25 acres
7/16/2013	400 Matthews	Permanone 31-66 (432-1250)	1:3	45.0	30.00 acres
7/24/2013	1404 Rosemond	Permanone 31-66 (432-1250)	1:3	9.0	5.00 acres
7/25/2013	21 Plantation Oak Lane	Permanone 31-66 (432-1250)	1:3	72.0	0.50 acres
7/29/2013	811 Strawfloor	Permanone 31-66 (432-1250)	1:3	6.0	2.00 acres
7/30/2013	1707 Smoot	Permanone 31-66 (432-1250)	1:3	18.0	1.00 acres
Total Permanone 31-66 Applied:				226.0 <i>(1.8 gals)</i>	40.00 acres

Treatment Area 3 Applications

7/1/2013	1908 Catherine Circle	Permanone 30-30 (432-1235)	1:5	32.4	0.50 acres
Total Permanone 30-30 Applied:				32.4 <i>(0.3 gals)</i>	0.50 acres
7/3/2013	2704 Neeley	Permanone 31-66 (432-1250)	1:4	28.8	1.00 acres
7/11/2013	4121 Dameron Dr.	Permanone 31-66 (432-1250)	1:4	52.0	2.50 acres
7/23/2013	3704 Eric St.	Permanone 31-66 (432-1250)	1:3	18.0	15.00 acres

Vector Disease Control International
2221 N. Church Street
Jonesboro, AR 72402
800-413-4445

Date	Location	Chemical	Mix Ratio	Amount Applied	Area Treated
7/25/2013	3322 Woodsprings	Permanone 31-66 (432-1250)	1:3	12.0	3.00 acres
7/25/2013	3106 Woodsprings Rd.	Permanone 31-66 (432-1250)	1:3	9.0	0.50 acres
Total Permanone 31-66 Applied:				119.8 <i>(0.9 gals)</i>	22.00 acres

Treatment Area 4 Applications

7/18/2013	500 Shadow Ridge	Evoluer 31-66 (769-991)	1:4	12.0	0.50 acres
Total Evoluer 31-66 Applied:				12.0 <i>(0.1 gals)</i>	0.50 acres
7/9/2013	1803 Burns Circle	Permanone 31-66 (432-1250)	1:4	12.0	0.50 acres
7/11/2013	505 Brentwood	Permanone 31-66 (432-1250)	1:4	28.8	0.50 acres
7/12/2013	1304 Hidden Valley	Permanone 31-66 (432-1250)	1:4	8.0	0.50 acres
7/12/2013	1810 East Lawson Rd.	Permanone 31-66 (432-1250)	1:4	120.0	1.00 acres
7/12/2013	3113 Parie Dr.	Permanone 31-66 (432-1250)	1:4	8.0	0.50 acres
7/15/2013	4708 Savannah	Permanone 31-66 (432-1250)	1:3	24.0	0.25 acres
7/15/2013	4613 Mt. Carmel Rd.	Permanone 31-66 (432-1250)	1:3	9.0	1.50 acres
7/15/2013	416 Huntcliff	Permanone 31-66 (432-1250)	1:4	36.0	0.50 acres
7/16/2013	3821 Raider	Permanone 31-66 (432-1250)	1:3	6.0	1.00 acres
7/18/2013	5929 Southwest Dr.	Permanone 31-66 (432-1250)	1:3	6.0	1.00 acres
7/22/2013	1810 East Lawson Rd.	Permanone 31-66 (432-1250)	1:3	12.0	1.00 acres
7/22/2013	221 Dunwoody	Permanone 31-66 (432-1250)	1:3	18.0	0.50 acres
7/24/2013	610 Pinehill Lane	Permanone 31-66 (432-1250)	1:3	6.0	5.00 acres
7/24/2013	717 Mardis Dr.	Permanone 31-66 (432-1250)	1:3	6.0	5.00 acres
7/25/2013	1307 Elkhorn	Permanone 31-66 (432-1250)	1:3	6.0	4.00 acres
7/25/2013	1301 Elkhorn	Permanone 31-66 (432-1250)	1:3	6.0	4.00 acres
7/25/2013	501 Mardis Dr.	Permanone 31-66 (432-1250)	1:3	6.0	3.00 acres
7/26/2013	601 Scotchpine Dr.	Permanone 31-66 (432-1250)	1:3	15.0	10.00 acres
7/29/2013	5705 Crowley's Ridge Rd.	Permanone 31-66 (432-1250)	1:3	6.0	1.00 acres

Vector Disease Control International
2221 N. Church Street
Jonesboro, AR 72402
800-413-4445

Date	Location	Chemical	Mix Ratio	Amount Applied	Area Treated
7/29/2013	Parker Rd. RV	Permanone 31-66 (432-1250)	1:3	30.0	15.00 acres
				Total Permanone 31-66 Applied: (2.9 gals)	368.8 55.75 acres
7/2/2013	2716 Lake Field Dr.	Perm-X UL 31-66 (655-812)	1:4	32.0	1.00 acres
				Total Perm-X UL 31-66 Applied: (0.3 gals)	32.0 1.00 acres
Treatment Area 5 Applications					
7/2/2013	3457 Summer Place	Biomist 30-30 (8329-42)	1:5	5.0	0.50 acres
				Total Biomist 30-30 Applied: (0.0 gals)	5.0 0.50 acres
7/3/2013	5116 S. Caraway	Permanone 31-66 (432-1250)	1:4	7.2	0.25 acres
7/11/2013	5411 Pine Creek	Permanone 31-66 (432-1250)	1:4	12.0	0.25 acres
7/11/2013	6612 Wooded Acres Cove	Permanone 31-66 (432-1250)	1:4	40.0	0.25 acres
7/11/2013	5304 Pond Ridge Lane	Permanone 31-66 (432-1250)	1:5	20.0	0.25 acres
7/12/2013	1521 Trammel Dr.	Permanone 31-66 (432-1250)	1:4	12.0	2.00 acres
7/12/2013	1351 Medallion Dr.	Permanone 31-66 (432-1250)	1:4	8.0	0.50 acres
7/15/2013	1800 Lorene	Permanone 31-66 (432-1250)	1:3	18.0	1.50 acres
7/18/2013	Southside softball field	Permanone 31-66 (432-1250)	1:3	68.0	40.00 acres
7/19/2013	4101 Staduim Blvd.	Permanone 31-66 (432-1250)	1:3	78.0	4.00 acres
7/22/2013	3707 S. Caraway Rd.	Permanone 31-66 (432-1250)	1:3	6.0	1.00 acres
7/23/2013	1107 Medallion	Permanone 31-66 (432-1250)	1:3	6.0	4.00 acres
7/23/2013	4101 Staduim Blvd.	Permanone 31-66 (432-1250)	1:3	45.0	1.00 acres
7/23/2013	3707 S. Caraway	Permanone 31-66 (432-1250)	1:3	9.0	10.00 acres
7/23/2013	3305 Richardson	Permanone 31-66 (432-1250)	1:3	9.0	1.00 acres
7/23/2013	1627 Cedar Ridge Lane	Permanone 31-66 (432-1250)	1:3	6.0	5.00 acres
7/24/2013	3707 S. Caraway	Permanone 31-66 (432-1250)	1:3	9.0	10.00 acres
7/25/2013	41401 Staduim Blvd	Permanone 31-66 (432-1250)	1:3	15.0	1.00 acres

Vector Disease Control International
2221 N. Church Street
Jonesboro, AR 72402
800-413-4445

Date	Location	Chemical	Mix Ratio	Amount Applied	Area Treated
7/25/2013	3707 S. Caraway	Permanone 31-66 (432-1250)	1:3	9.0	10.00 acres
7/26/2013	5200 Richardson	Permanone 31-66 (432-1250)	1:3	24.0	4.00 acres
7/26/2013	4701 Colony	Permanone 31-66 (432-1250)	1:3	36.0	10.00 acres
7/26/2013	1810 E. Lawson	Permanone 31-66 (432-1250)	1:3	6.0	2.00 acres
Total Permanone 31-66 Applied:				443.2 <i>(3.5 gals)</i>	108.00 acres

Treatment Area 6 Applications

7/9/2013	Oak hill	Permanone 10EC (432-1132)	1:5	54.0	0.50 acres
Total Permanone 10EC Applied:				54.0 <i>(0.4 gals)</i>	0.50 acres
7/3/2013	1002 Kimberly	Permanone 31-66 (432-1250)	1:4	4.0	0.50 acres
7/10/2013	5925 Megan	Permanone 31-66 (432-1250)	1:4	48.0	0.25 acres
7/12/2013	312 Marzee Ann	Permanone 31-66 (432-1250)	1:4	28.0	0.25 acres
7/16/2013		Permanone 31-66 (432-1250)	1:3	63.0	100.00 acres
7/18/2013	701 Victory Lane	Permanone 31-66 (432-1250)	1:3	15.0	0.25 acres
7/18/2013	5003 Lynnete	Permanone 31-66 (432-1250)	1:4	18.0	0.50 acres
7/23/2013	1220 Despain Cove	Permanone 31-66 (432-1250)	1:3	9.0	0.25 acres
7/29/2013		Permanone 31-66 (432-1250)	1:3	18.0	50.00 acres
Total Permanone 31-66 Applied:				203.0 <i>(1.6 gals)</i>	152.00 acres

Treatment Area 7 Applications

7/11/2013	325 N. Church	Permanone 31-66 (432-1250)	1:4	18.0	0.50 acres
7/15/2013		Permanone 31-66 (432-1250)	1:4	36.0	0.75 acres
7/18/2013	1510 S. Church	Permanone 31-66 (432-1250)	1:3	12.0	0.50 acres
7/26/2013	434 N. Alice	Permanone 31-66 (432-1250)	1:3	16.0	0.25 acres
Total Permanone 31-66 Applied:				82.0 <i>(0.6 gals)</i>	2.00 acres

Treatment Area 8 Applications

7/3/2013	1102 Dove Rd.			0.0	0.00 acres
----------	---------------	--	--	-----	------------

Date	Location	Chemical	Mix Ratio	Amount Applied	Area Treated
				<i>Total Applied:</i>	0.0 (0.0 gals)
7/2/2013	325 N. Church	Permanone 31-66 (432-1250)	1:4	16.0	0.25 acres
7/3/2013	1206 S. Main	Permanone 31-66 (432-1250)	1:5	80.0	0.75 acres
7/3/2013	1204 Princeton	Permanone 31-66 (432-1250)	1:4	8.0	1.00 acres
7/3/2013	1204 Princeton	Permanone 31-66 (432-1250)	1:4	21.6	0.25 acres
7/3/2013	1408 Hidden Cove	Permanone 31-66 (432-1250)	1:4	36.0	0.25 acres
7/12/2013	1408 East Nettleton	Permanone 31-66 (432-1250)	1:4	80.0	2.00 acres
7/12/2013	2309 Shoshoni	Permanone 31-66 (432-1250)	1:4	20.0	10.00 acres
7/12/2013	212 Windover Rd.	Permanone 31-66 (432-1250)	1:4	4.0	1.00 acres
7/12/2013	1102 Dove	Permanone 31-66 (432-1250)	1:4	12.0	2.50 acres
7/13/2013	1408 East Nettlton	Permanone 31-66 (432-1250)	1:4	24.0	3.00 acres
7/15/2013	2501 Abbey Rd.	Permanone 31-66 (432-1250)	1:3	9.0	2.00 acres
7/22/2013	6617 S. Caraway	Permanone 31-66 (432-1250)	1:3	3.0	1.00 acres
7/23/2013	1819 Metzler Lane	Permanone 31-66 (432-1250)	1:4	3.0	1.00 acres
7/24/2013	1201 Fleming	Permanone 31-66 (432-1250)	1:3	21.0	1.00 acres
7/24/2013	328 Short Fisher	Permanone 31-66 (432-1250)	1:3	9.0	0.25 acres
7/25/2013	2908 Burmida	Permanone 31-66 (432-1250)	1:3	36.0	0.50 acres
7/25/2013		Permanone 31-66 (432-1250)	1:3	63.0	1.00 acres
7/25/2013	2906 Bermuda Dr.	Permanone 31-66 (432-1250)	1:3	36.0	0.50 acres
7/25/2013	1703 Lark Dr.	Permanone 31-66 (432-1250)	1:3	3.0	1.00 acres
7/25/2013	1812 Wilkins	Permanone 31-66 (432-1250)	1:3	3.0	1.00 acres
7/26/2013		Permanone 31-66 (432-1250)	1:3	86.0	2.00 acres
7/26/2013	300 BLK Liberty	Permanone 31-66 (432-1250)	1:3	3.0	1.00 acres
7/30/2013	710 East Nettleton	Permanone 31-66 (432-1250)	1:4	16.0	2.50 acres
				<i>Total Permanone 31-66 Applied:</i>	592.6 (4.6 gals)
					35.75 acres

Vector Disease Control International
2221 N. Church Street
Jonesboro, AR 72402
800-413-4445

Date	Location	Chemical	Mix Ratio	Amount Applied	Area Treated
7/2/2013	108 East Gordon	Perm-X UL 31-66 (655-812)	1:4	24.0	0.25 acres
7/3/2013	1102 Dove	Perm-X UL 31-66 (655-812)	1:4	0.0	0.00 acres
Total Perm-X UL 31-66 Applied:				24.0 (0.2 gals)	0.25 acres

Treatment Area 9 Applications

6/28/2013	2204 Barnhill rd.	Biomist 30-30 (8329-42)	1:5	20.0	0.25 acres
Total Biomist 30-30 Applied:				20.0 (0.2 gals)	0.25 acres
7/12/2013	7206 Ely Walker Rd.	Permanone 31-66 (432-1250)	1:4	28.0	0.25 acres
7/18/2013	4906 E. Highland	Permanone 31-66 (432-1250)	1:3	12.0	0.25 acres
7/22/2013	1421 Overhill	Permanone 31-66 (432-1250)	1:4	3.0	1.00 acres
7/22/2013	4904 East Highland	Permanone 31-66 (432-1250)	1:3	3.0	1.00 acres
7/24/2013	2204 Barnhill Rd.	Permanone 31-66 (432-1250)	1:3	6.0	2.00 acres
Total Permanone 31-66 Applied:				52.0 (0.4 gals)	4.50 acres

Treatment Area 10 Applications

7/2/2013	3602 Friendship Circle	Permanone 31-66 (432-1250)	1:4	12.0	0.50 acres
7/2/2013	5304 Jean Dr.	Permanone 31-66 (432-1250)	1:4	12.0	0.50 acres
7/3/2013	800 Covey	Permanone 31-66 (432-1250)	1:4	18.0	0.25 acres
7/12/2013	3107 Cherrywood	Permanone 31-66 (432-1250)	1:4	8.0	0.50 acres
7/15/2013	Creekwood, Spring wood	Permanone 31-66 (432-1250)	1:3	24.0	0.50 acres
7/15/2013	1624 Beaver Creek Lane	Permanone 31-66 (432-1250)	1:3	12.0	0.50 acres
7/18/2013	Eubie Lane	Permanone 31-66 (432-1250)	1:3	21.0	0.25 acres
7/19/2013	2804 Springs Valley Dr.	Permanone 31-66 (432-1250)	1:4	18.0	4.00 acres
7/22/2013	3626 Flemon	Permanone 31-66 (432-1250)	1:3	3.0	3.00 acres
7/24/2013	2100 Paula	Permanone 31-66 (432-1250)	1:3	9.0	7.00 acres
7/24/2013	4123 Friendly Hope Rd.	Permanone 31-66 (432-1250)	1:3	24.0	20.00 acres
7/24/2013	1908 Cathrine Circle	Permanone 31-66 (432-1250)	1:3	6.0	5.00 acres

Vector Disease Control International
2221 N. Church Street
Jonesboro, AR 72402
800-413-4445

Date	Location	Chemical	Mix Ratio	Amount Applied	Area Treated
7/25/2013	3207 Creekwood	Permanone 31-66 (432-1250)	1:3	6.0	0.25 acres
7/25/2013	411 Glen Elen Lane	Permanone 31-66 (432-1250)	1:3	21.0	3.00 acres
7/25/2013	5100 Shelton Bluff Rd.	Permanone 31-66 (432-1250)	1:3	24.0	5.00 acres
7/29/2013	Craighead Rd. & Wood St.	Permanone 31-66 (432-1250)	1:3	24.0	5.00 acres
7/29/2013	3107 Cherrywood	Permanone 31-66 (432-1250)	1:3	6.0	2.00 acres
Total Permanone 31-66 Applied:				248.0 <i>(1.9 gals)</i>	57.25 acres

Treatment Area 11 Applications

7/2/2013	1517 Nelms	Permanone 31-66 (432-1250)	1:4	8.0	0.25 acres
7/11/2013	3313 Tims St.	Permanone 31-66 (432-1250)	1:4	8.0	0.25 acres
7/12/2013	3301 Dayton	Permanone 31-66 (432-1250)	1:4	8.0	0.25 acres
7/12/2013	3301 Sun	Permanone 31-66 (432-1250)	1:4	8.0	0.25 acres
7/12/2013	603 East Nettleton	Permanone 31-66 (432-1250)	1:4	12.0	0.25 acres
7/12/2013	2205 Sutton	Permanone 31-66 (432-1250)	1:4	8.0	0.25 acres
7/18/2013	6710 East Highland	Permanone 31-66 (432-1250)	1:4	15.0	0.50 acres
7/18/2013	6600 East Highland	Permanone 31-66 (432-1250)	1:4	21.0	4.00 acres
7/26/2013	3014 B Pinefield	Permanone 31-66 (432-1250)	1:3	3.0	1.00 acres
7/26/2013	3509 E. Highland Dr.	Permanone 31-66 (432-1250)	1:3	3.0	1.00 acres
7/29/2013	1900 Kathleen St.	Permanone 31-66 (432-1250)	1:4	9.0	0.50 acres
7/30/2013	3507 East Highland	Permanone 31-66 (432-1250)	1:4	16.0	3.00 acres
Total Permanone 31-66 Applied:				119.0 <i>(0.9 gals)</i>	11.50 acres
Grand Totals				3,155.0 <i>(24.6 gals)</i>	551.25 acres

Vector Disease Control International
2221 N. Church Street
Jonesboro, AR 72402
800-413-4445



Summary of Service Requests

Start Date: 7/1/2013 End Date: 7/31/2013

Jonesboro

Month	Municipality	Treatment Area	Total Calls	Total Inspected	Disposition Totals	Total Sites				
						with Mosquitoes	Larvicide Applied			
July 2013		0	11	10	No Action Required:	0	Eggs:	0	0.00 oz	308.2 oz
					Emptied Containers:	0	Larvae:	0		
					Biological Control:	0	Pupae:	0		
					Larvicided:	0	Adults:	0		
					Adulticided:	10				
					Needed to Return:	0				
					No Action Required:	0	Eggs:	0	0.00 oz	81.0 oz
					Emptied Containers:	0	Larvae:	0		
					Biological Control:	0	Pupae:	0		
					Larvicided:	0	Adults:	0		
Adulticided:	7									
Needed to Return:	0									
July 2013		2	11	11	No Action Required:	0	Eggs:	0	0.00 oz	352.0 oz
					Emptied Containers:	0	Larvae:	0		
					Biological Control:	0	Pupae:	0		
					Larvicided:	0	Adults:	0		
					Adulticided:	11				
					Needed to Return:	0				
					No Action Required:	0	Eggs:	0	0.00 oz	352.0 oz
					Emptied Containers:	0	Larvae:	0		
					Biological Control:	0	Pupae:	0		
					Larvicided:	0	Adults:	0		
Adulticided:	11									
Needed to Return:	0									

Vector Disease Control International

2221 N. Church Street

Jonesboro, AR 72402

800-413-4445

Month	Municipality	Treatment Area	Total Calls	Total Inspected	Disposition Totals	Total Sites with Mosquitoes		Total Amount of Larvicide Applied		Total Amount of Adulticide Applied	
						Eggs:	Larvae:	Larvicide Applied	Adulticide Applied		
July 2013		3	6	5	No Action Required:	0	Eggs:	0	0.00 oz	152.2 oz	
					Emptied Containers:	0	Larvae:	0			
					Biological Control:	0	Pupae:	0			
					Larvicided:	0	Adults:	0			
					Adulticided:	6					
					Needed to Return:	0					
					No Action Required:	0	Eggs:	0	0.00 oz	412.8 oz	
					Emptied Containers:	0	Larvae:	0			
					Biological Control:	0	Pupae:	0			
					Larvicided:	0	Adults:	0			
Adulticided:	22										
Needed to Return:	0										
July 2013		5	22	19	No Action Required:	0	Eggs:	0	0.00 oz	448.2 oz	
					Emptied Containers:	0	Larvae:	0			
					Biological Control:	0	Pupae:	0			
					Larvicided:	0	Adults:	0			
					Adulticided:	21					
					Needed to Return:	0					
					No Action Required:	0	Eggs:	0	0.00 oz	257.0 oz	
					Emptied Containers:	0	Larvae:	0			
					Biological Control:	0	Pupae:	0			
					Larvicided:	0	Adults:	0			
Adulticided:	9										
Needed to Return:	0										

Month	Municipality	Treatment Area	Total Calls	Total Inspected	Disposition Totals	Total Sites with Mosquitoes	Total Amount of Larvicide Applied	Total Amount of Adulticide Applied
July 2013		7	4	4	No Action Required: 0	Eggs: 0	0.00 oz	82.0 oz
					Emptied Containers: 0	Larvae: 0		
					Biological Control: 0	Pupae: 0		
					Larvicided: 0	Adults: 0		
					Adulticided: 4			
					Needed to Return: 0			
					No Action Required: 0	Eggs: 0		
					Emptied Containers: 0	Larvae: 0		
					Biological Control: 0	Pupae: 0		
					Larvicided: 0	Adults: 0		
Adulticided: 25								
Needed to Return: 0								
July 2013		9	5	5	No Action Required: 0	Eggs: 0	0.00 oz	52.0 oz
					Emptied Containers: 0	Larvae: 0		
					Biological Control: 0	Pupae: 0		
					Larvicided: 0	Adults: 0		
					Adulticided: 5			
					Needed to Return: 0			
					No Action Required: 0	Eggs: 0		
					Emptied Containers: 0	Larvae: 0		
					Biological Control: 0	Pupae: 0		
					Larvicided: 0	Adults: 0		
Adulticided: 17								
Needed to Return: 0								
July 2013		10	17	15	No Action Required: 0	Eggs: 0	0.00 oz	248.0 oz
					Emptied Containers: 0	Larvae: 0		
					Biological Control: 0	Pupae: 0		
					Larvicided: 0	Adults: 0		
					Adulticided: 17			
					Needed to Return: 0			
					No Action Required: 0	Eggs: 0		
					Emptied Containers: 0	Larvae: 0		
					Biological Control: 0	Pupae: 0		
					Larvicided: 0	Adults: 0		
Adulticided: 17								
Needed to Return: 0								

Month	Municipality	Treatment Area	Total Calls	Total Inspected	Disposition Totals	Total Sites with Mosquitoes	Total Amount of Larvicide Applied	Total Amount of Adulticide Applied
July 2013		11	12	12	No Action Required: 0 Emptied Containers: 0 Biological Control: 0 Larvicided: 0 Adulticided: 11 Needed to Return: 0	Eggs: 0 Larvae: 0 Pupae: 0 Adults: 0	0.00 oz	119.0 oz
Overall Totals:			152	140	NA: 0 EC: 0 BC: 0	LV: 0 AT: 148 NR: 0	0.00 oz	3129.0 oz

Craighead County

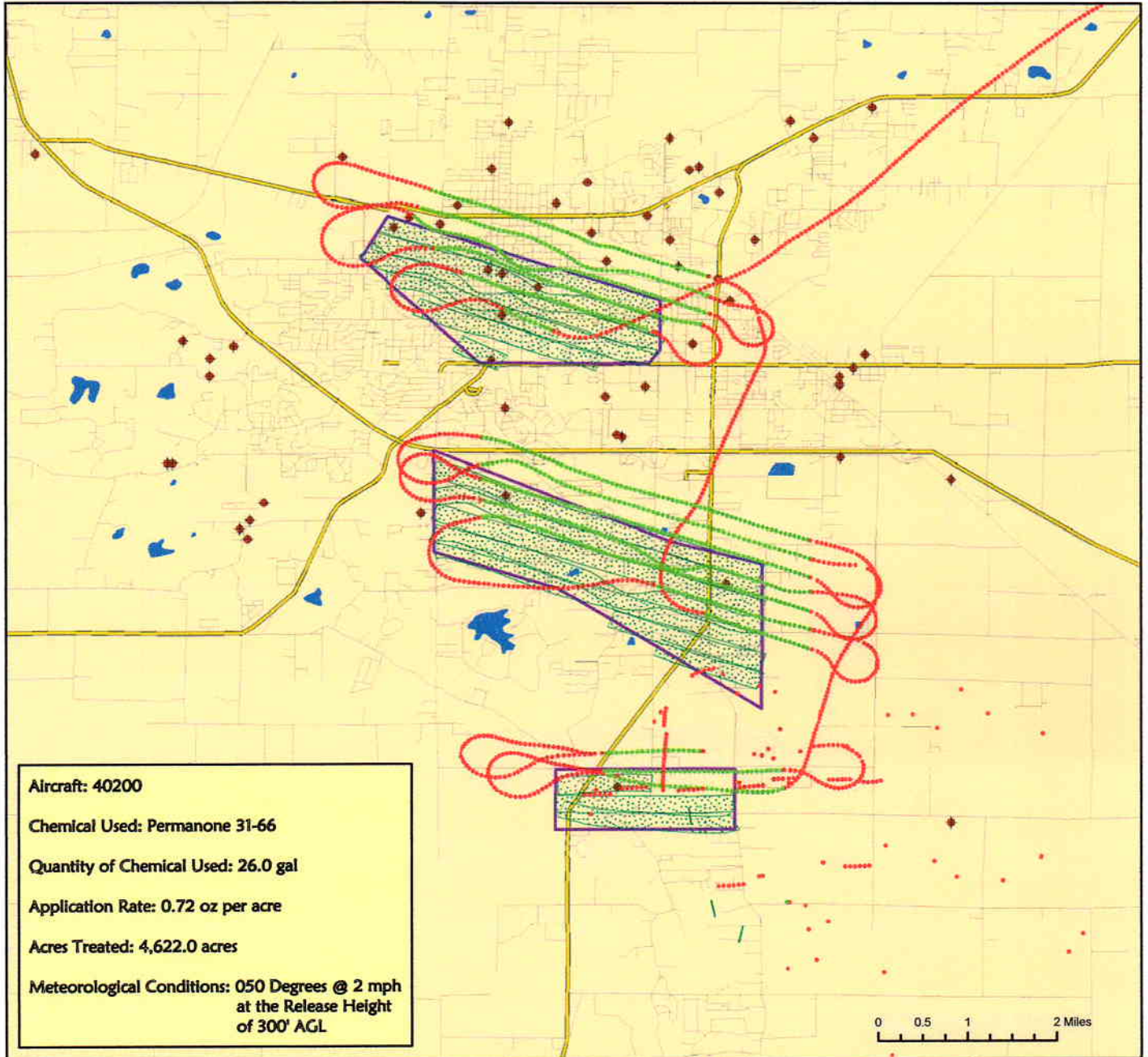
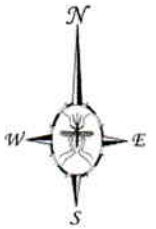


The City of Jonesboro, Arkansas


Aerial Adulticide Application Date:
July 28, 2013



- Flight Line**
- Spray Off**
- Spray On**
- Towers**
- Spray Disposition**
- Treatment Areas**



Aircraft: 40200
Chemical Used: Permanone 31-66
Quantity of Chemical Used: 26.0 gal
Application Rate: 0.72 oz per acre
Acres Treated: 4,622.0 acres
Meteorological Conditions: 050 Degrees @ 2 mph
at the Release Height
of 300' AGL

 Vector Disease Control
1320 Brookwood Dr., Suite H
Little Rock, AR 72202

These map products were developed for use by VDCI for its internal purposes only and were not designed or intended for general use by members of the public. VDCI makes no representation or warranty as to its accuracy, timeliness, or completeness, and in particular, its accuracy in labeling or displaying dimensions, contours, property boundaries, or placement or location of any map features thereon. © 2013 VDCI. All rights reserved.

Craighead County

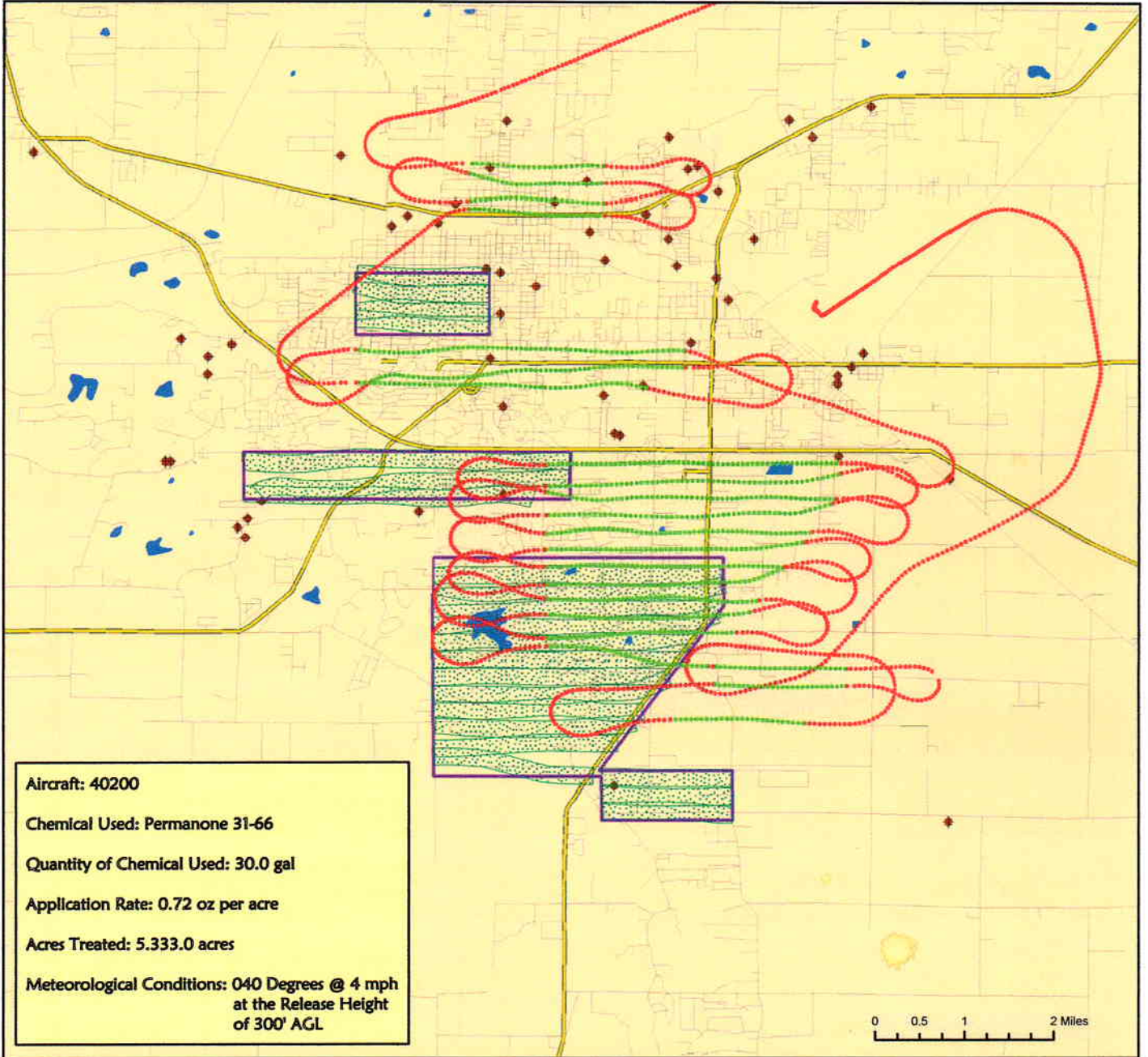


The City of Jonesboro, Arkansas

Aerial Adulticide Application Date:
July 1, 2013




- Flight Line** Towers ●
- Spray Off ● Spray Disposition [Dotted Pattern]
- Spray On ● Treatment Areas [Purple Outline]



Aircraft: 40200
Chemical Used: Permanone 31-66
Quantity of Chemical Used: 30.0 gal
Application Rate: 0.72 oz per acre
Acres Treated: 5.333.0 acres
Meteorological Conditions: 040 Degrees @ 4 mph
 at the Release Height
 of 300' AGL

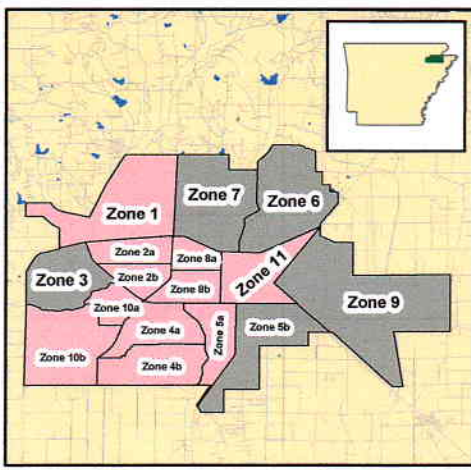


 Vector Disease Control
 1320 Brookwood Dr., Suite H
 Little Rock, AR 72202

These map products were developed for use by VDCI for its internal purposes only and were not designed or intended for general use by members of the public. VDCI makes no representation or warranty as to its accuracy, timeliness, or completeness, and in particular, its accuracy in labeling or displaying dimensions, contours, property boundaries, or placement or location of any map features thereon. © 2013 VDCI. All rights reserved.

The City of Jonesboro, Arkansas

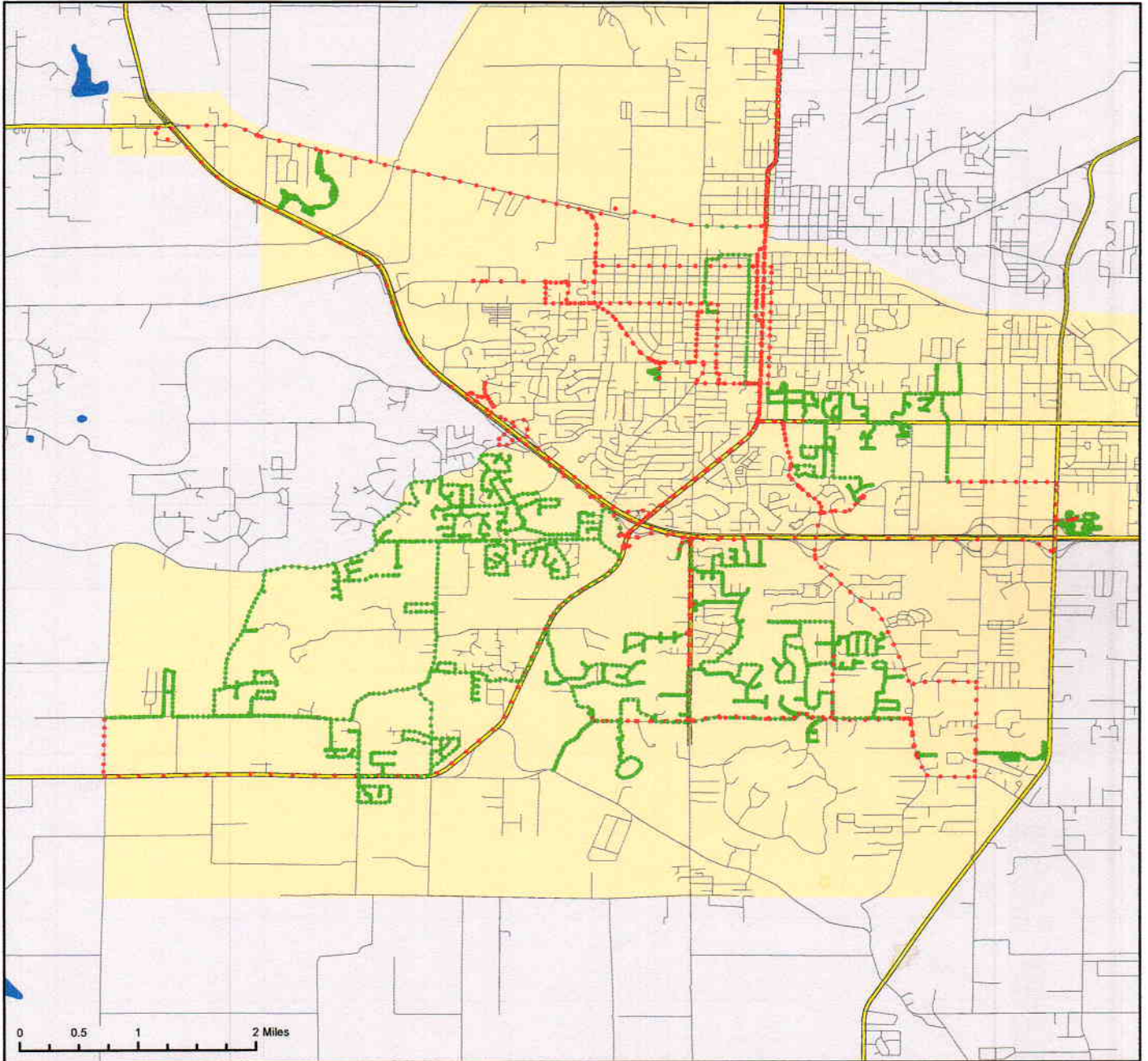
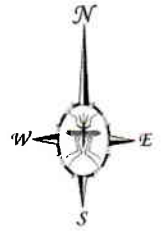
Ground Adulticide Application Date: July 15, 2013



Sprayer Status

- Spray Off
- Spray On

Chemical: Permanone 31-66
Quantity Used: 23.9 gal
Miles Treated: 91.9
Acres Treated: 3,333.0

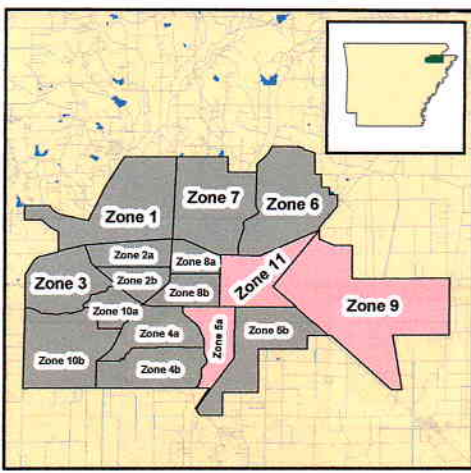


Vector Disease Control
1320 Brookland Dr., Suite H
Little Rock, AR 72202

These map products were developed for use by VDCI for its internal purposes only and were not designed or intended for general use by members of the public. VDCI makes no representation or warranty as to its accuracy, timeliness, or completeness, and in particular, its accuracy in labeling or displaying dimensions, contours, property boundaries, or placement or location of any map features thereon. ©2013 VDCI. All rights reserved.

The City of Jonesboro, Arkansas

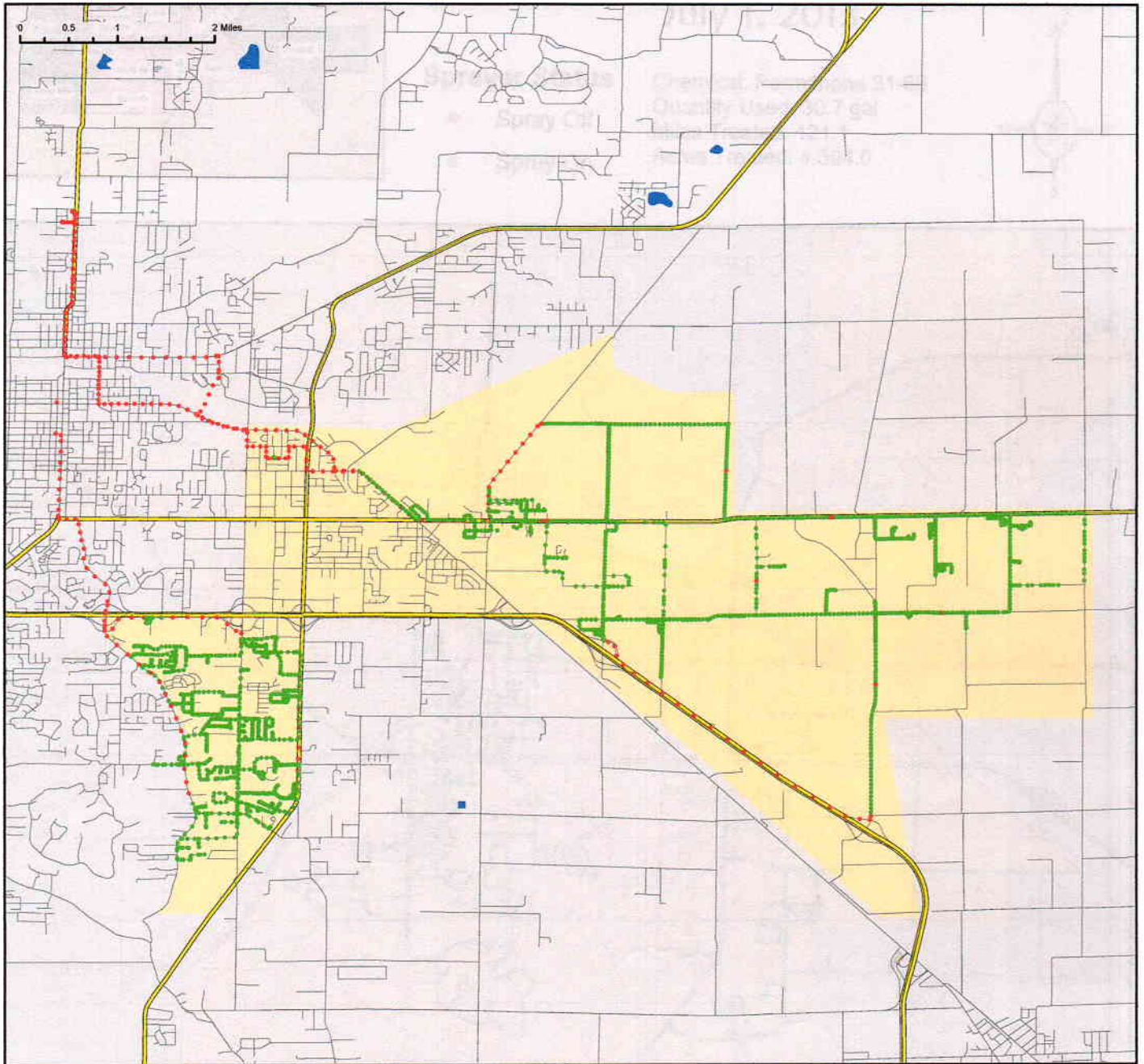
Ground Adulticide Application Date:
July 8, 2013



Sprayer Status

- Spray Off
- Spray On

Chemical: Permanone 31-66
Quantity Used: 16.3 gal
Miles Treated: 69.8
Acres Treated: 2,532.0



Vector Disease Control
1320 Brookland Dr., Suite H
Little Rock, AR 72202

These map products were developed for use by VDCI for its internal purposes only and were not designed or intended for general use by members of the public. VDCI makes no representation or warranty as to its accuracy, timeliness, or completeness, and in particular, its accuracy in labeling or displaying dimensions, contours, property boundaries, or placement or location of any map features thereon. ©2013 VDCI. All rights reserved.



Vector Disease Control
1320 Brookland Dr., Suite H
Little Rock, AR 72202

These map products were developed for use by VDCI for its internal purposes only and were not designed or intended for general use by members of the public. VDCI makes no representation or warranty as to its accuracy, timeliness, or completeness, and in particular, its accuracy in labeling or displaying dimensions, contours, property boundaries, or placement or location of any map features thereon. ©2013 VDCI. All rights reserved.



Adult Mosquito Surveillance Summary

Jonesboro

