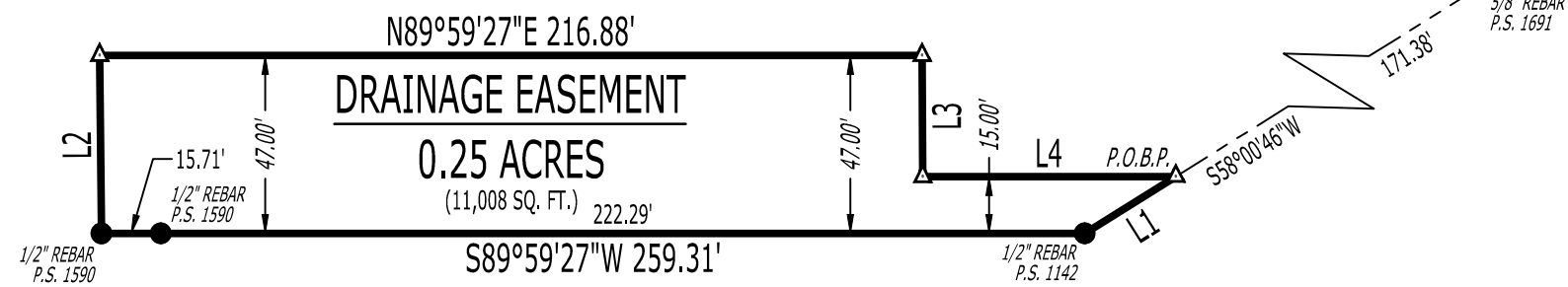


### LINE TABLE:

LINE #	DIRECTION	LENGTH
L1	S58°00'46"W	28.32'
L2	N00°33'07"W	47.00'
L3	S00°17'16"E	32.00'
L4	N89°59'27"E	66.74'

### LEGEND:

- FOUND MONUMENT (AS NOTED)
- ▲ COMPUTED POINT (NOT MONUMENTED)
- BOUNDARY LINE



### LEGAL DESCRIPTION:

#### DRAINAGE EASEMENT:

A PART OF TRACT 1 OF STONEFIELD REPLAT, JONESBORO, CRAIGHEAD COUNTY, ARKANSAS, BEING MORE PARTICULARLY DESCRIBED AS FOLLOWS:

BEGINNING AT THE NORTH QUARTER OF SECTION 10, TOWNSHIP 14 NORTH, RANGE 04 EAST, JONESBORO, CRAIGHEAD COUNTY, ARKANSAS; THENCE SOUTH 89°40'12" WEST, 1335.00 FEET; THENCE SOUTH 00°37'12" WEST, 1294.80 FEET; THENCE SOUTH 89°47'48" EAST, 101.94 FEET; THENCE SOUTH 00°14'32" WEST, 286.56 FEET; THENCE SOUTH 58°00'46" WEST, 171.38 FEET TO THE POINT OF BEGINNING PROPER; THENCE CONTINUE SOUTH 58°00'46" WEST, 28.32 FEET; THENCE SOUTH 89°59'27" WEST, 259.31 FEET; THENCE NORTH 00°33'07" WEST, 47.00 FEET; THENCE NORTH 89°59'27" EAST, 216.88 FEET; THENCE SOUTH 00°17'16" EAST, 32.00 FEET; THENCE NORTH 89°59'27" EAST, 66.74 FEET TO THE POINT OF BEGINNING PROPER, CONTAINING 0.25 ACRES (11,008 SQ. FT.), MORE OR LESS, SUBJECT TO ALL RIGHTS-OF-WAY AND EASEMENTS OF RECORD.

**POINT OF BEGINNING**  
NORTH QUARTER CORNER, SECTION 10,  
TOWNSHIP 14 NORTH, RANGE 04 EAST  
CORNER BY RECORD



### RIDGE SURVEYING & CONSULTING, PLLC.

311 South Church St., Suite H Jonesboro, AR 72401 870-203-9940 www.ridgesurveying.net

**DRAINAGE EASEMENT DEPICTION**  
CLIENT: STEM  
PART OF TRACT 1 OF STONEFIELD REPLAT, JONESBORO, CRAIGHEAD COUNTY, ARKANSAS

**NOT A BOUNDARY SURVEY FOR REFERENCE PURPOSES ONLY**

#### DRAWING INFO

DRAWN BY: JJN	SCALE: 1" = 50'
DATE: 09 / 11 / 2020	JOB NO: 20177-03_ESMT

#### REVISIONS