



Vector Disease Control, Inc.
Mosquito Surveillance and Control Report
for the

City of Jonesboro

September/October 2009
2009 Year End

2221 N. Church St. Jonesboro, AR 72401

T-870.933.6939 F- 870.933.0122





City of Jonesboro Activity Report

September/October 2009

Vector Disease Control, Inc. (VDCI) provides a proven, scientific approach to mosquito control for the city of Jonesboro. VDCI's operations include larval and adult mosquito surveillance followed by the application of larvicides and adulticides. In addition, our office responds to service requests from the public.

Mosquito Surveillance

VDCI has utilized a total of thirteen (13) New Jersey light traps placed in residential and recreational areas throughout Jonesboro during this reporting period. These traps collected an average of **12** mosquitoes per trap night (**842** total mosquitoes) during this time. There have been a total of **3** mosquito species collected, with *Anopheles quadrimaculatus* being the most predominant species. With an average trap count of **37**, the Ashwood trap has consistently collected the most mosquitoes.

Larval Control Activity

Permanent water, flood water, artificial containers, and drainage system sites are inspected for larval mosquito breeding on a regular basis. In total, **7** site inspections found the presence of mosquito larvae. As a result of these inspections, **10.75** pounds of granular BTI (Aquabac 200g) and **4** pounds of Abate were applied to these mosquito breeding sites. Additionally, VDCI is continuing to eliminate breeding habitats for artificial container mosquitoes by targeting bird baths, buckets, tires, etc.



Adult Mosquito Control Activity

In response to community events and mosquito surveillance data, VDCI applied the adulticide Permanone 30-30 on **15** truck nights for this reporting period. All **15** adulticide ULV applications were made with truck-mounted ULV units equipped with GPS-enabled monitors. During this report period, a total of **1,354** spray miles (**49,234** acres) were treated with a total of **200** gallons of Permanone 30-30 adulticide in residential and recreational areas. In addition to routine truck spraying, VDCI has responded to **9** service requests and adulticided all parks and recreational areas.

Summary

During the months of September and October, VDCI has continued to provide exceptional control of larval and adult mosquito populations. VDCI will remain diligent in our surveillance and control activities to prevent a significant increase in the mosquito population. Based on recent weather conditions VDCI expects the trend of routine adulticiding and larviciding to continue. However, if VDCI detects a significant rise in the mosquito population we will increase larval and adult control. As always, VDCI welcomes residents with any mosquito-related questions or concerns to contact VDCI's Jonesboro office directly at 870.933.6939.



Year End Totals

We, at VDCI, appreciate the opportunity to provide mosquito control for the city of Jonesboro throughout this 2009 season.

The following is a total of all chemical used and areas treated throughout 2009.

Total mileage treated: 9,830

Total acreage treated: 373,798 acres

Total adulticide used: 1,826 gallons

Total aerial flights: 5

Total nights sprayed: 86

Total daytime service requests: 70

Yearly light trap average: 15

Total granular larvicide used: 78.25 pounds

Total growth inhibitor used: 38 briquettes

460,000



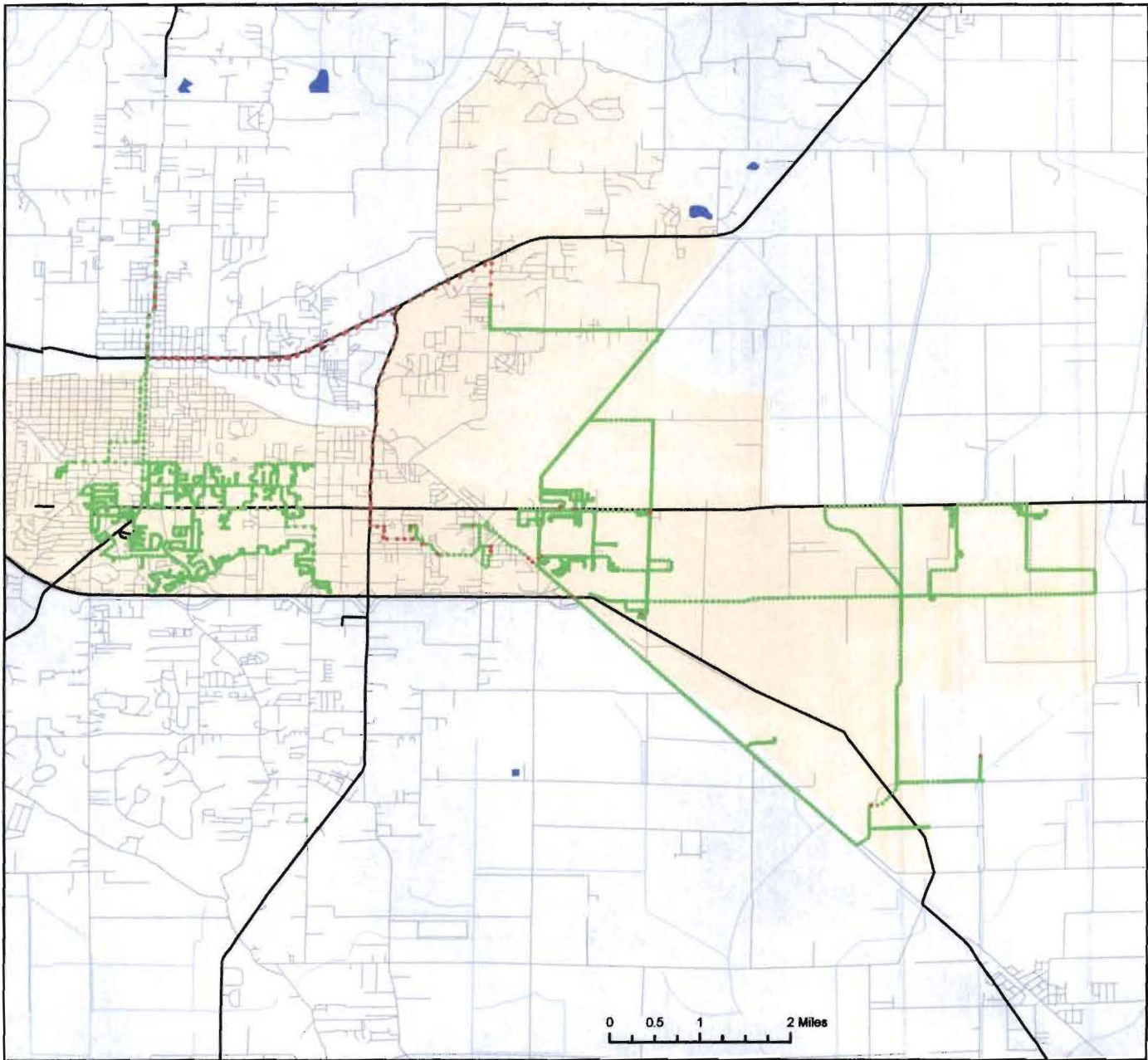
The City of Jonesboro, Arkansas

Ground Adulticide Application Date: September 8, 2009

Sprayer Status

- Spray Off
- Spray On

Chemical: Permanone 30-30
 Quantity Used: 32.0 gal
 Miles Treated: 104.9
 Acres Treated: 3,805.0



Vector Disease Control, Inc.
 PO Box 566
 DeWitt, AR 72042

These map products were developed for use by VDCI for its internal purposes only and were not designed or intended for general use by members of the public. VDCI makes no representation or warranty as to its accuracy, timeliness, or completeness, and in particular, its accuracy in labeling or displaying dimensions, contours, property boundaries, or placement or location of any map features thereon. © 2009 VDCI. All rights reserved.