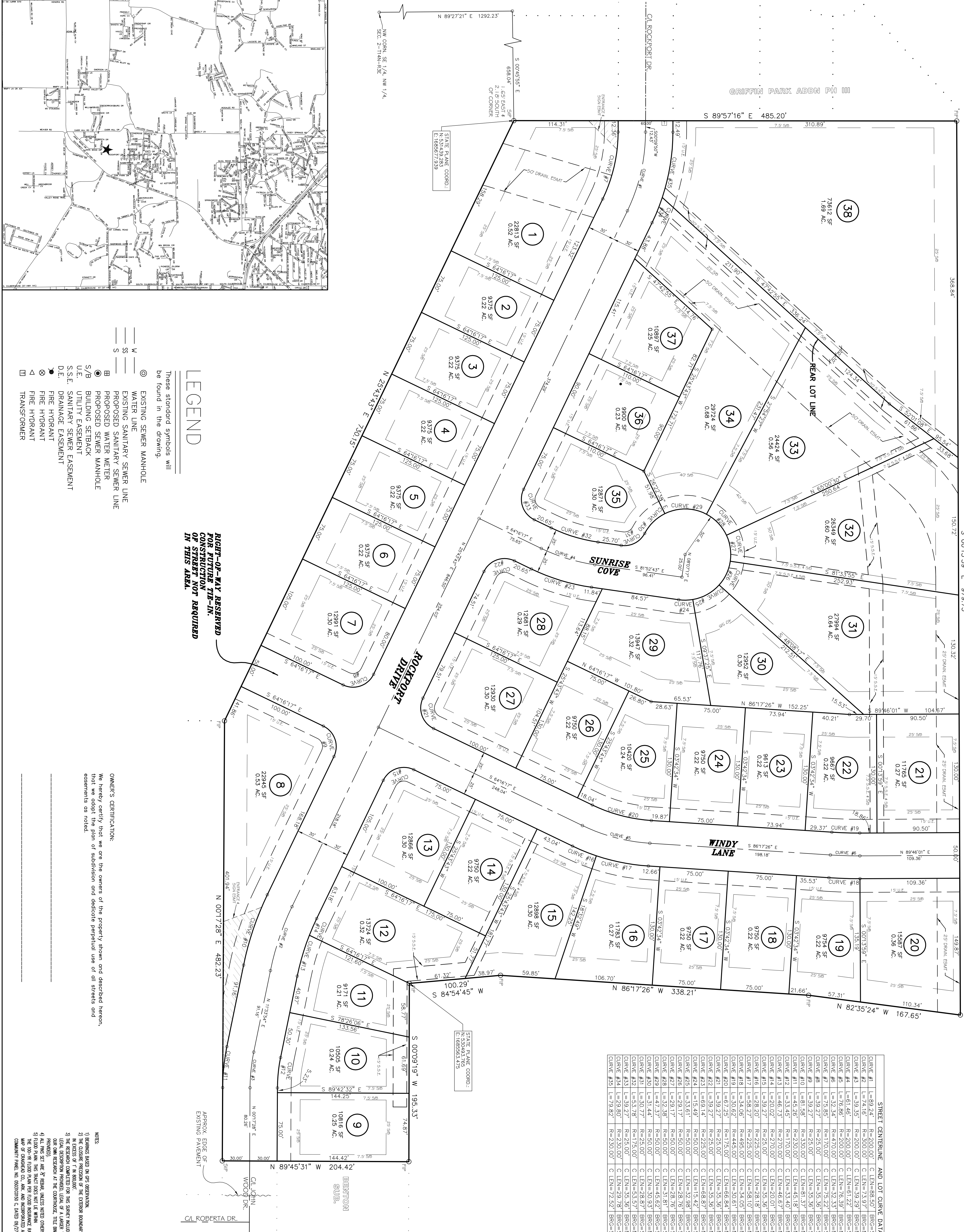
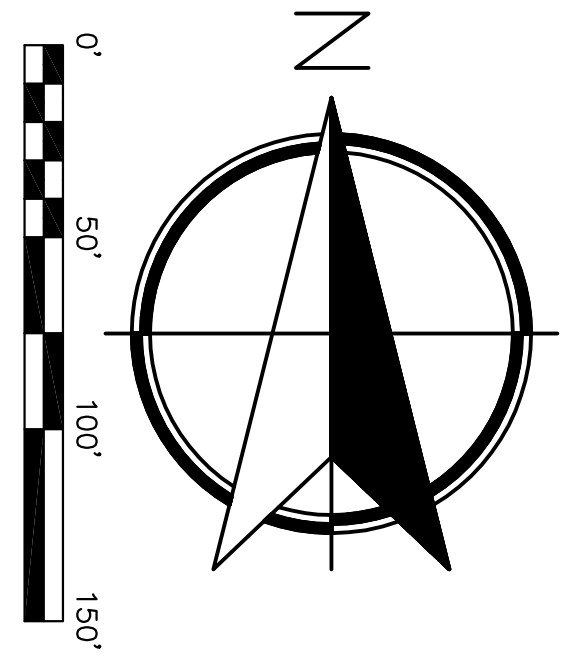


GORDON ADDN.



| STREET CENTERLINE AND LOT CURVE DATA |
|--|
| CURVE #1 = 89.241' R=200.00' C LEN=88.50' BRG=S 125.646° E |
| CURVE #2 = 74.16' R=300.00' C LEN=73.97' BRG=N 18.3844° E |
| CURVE #3 = 39.35' R=200.00' C LEN=39.29' BRG=N 05.5541° E |
| CURVE #4 = 61.46' R=200.00' C LEN=61.22' BRG=S 73.0430° E |
| CURVE #5 = 76.86' R=200.00' C LEN=76.39' BRG=N 75.1651° E |
| CURVE #6 = 92.34' R=470.00' C LEN=92.33' BRG=N 88.142° E |
| CURVE #7 = 78.82' R=250.00' C LEN=78.82' BRG=S 102.443° W |
| CURVE #8 = 39.27' R=250.00' C LEN=39.27' BRG=S 19.1617° E |
| CURVE #9 = 81.86' R=330.00' C LEN=81.37' BRG=N 18.3844° E |
| CURVE #10 = 45.26' R=230.00' C LEN=45.18' BRG=N 05.5541° E |
| CURVE #11 = 33.45' R=170.00' C LEN=33.40' BRG=N 16.3123° E |
| CURVE #12 = 46.73' R=270.00' C LEN=46.67' BRG=N 16.3123° E |
| CURVE #13 = 20.02' R=250.00' C LEN=20.01' BRG=N 23.5617° E |
| CURVE #14 = 39.27' R=250.00' C LEN=39.26' BRG=N 70.3443° E |
| CURVE #15 = 28.20' R=250.00' C LEN=28.19' BRG=N 67.5144° W |
| CURVE #16 = 32.64' R=465.00' C LEN=32.64' BRG=N 88.142° W |
| CURVE #17 = 30.62' R=445.00' C LEN=30.61' BRG=N 88.1542° W |
| CURVE #18 = 62.25' R=175.00' C LEN=62.84' BRG=N 75.1651° W |
| CURVE #19 = 39.27' R=250.00' C LEN=39.26' BRG=N 19.1617° W |
| CURVE #20 = 35.36' R=250.00' C LEN=35.36' BRG=N 73.043° W |
| CURVE #21 = 69.14' R=225.00' C LEN=68.87' BRG=N 73.043° W |
| CURVE #22 = 15.49' R=50.00' C LEN=15.42' BRG=S 89.1456° W |
| CURVE #23 = 33.61' R=50.00' C LEN=33.58' BRG=S 89.1456° W |
| CURVE #24 = 29.17' R=50.00' C LEN=29.16' BRG=S 89.1456° E |
| CURVE #25 = 42.38' R=50.00' C LEN=42.38' BRG=S 43.3231° E |
| CURVE #26 = 31.44' R=50.00' C LEN=31.44' BRG=S 43.3231° E |
| CURVE #27 = 30.77' R=25.00' C LEN=30.93' BRG=N 45.3628° E |
| CURVE #28 = 31.44' R=25.00' C LEN=31.44' BRG=N 45.3628° E |
| CURVE #29 = 50.77' R=125.00' C LEN=50.93' BRG=N 45.3628° E |
| CURVE #30 = 50.77' R=125.00' C LEN=50.93' BRG=N 45.3628° E |
| CURVE #31 = 50.77' R=125.00' C LEN=50.93' BRG=N 45.3628° E |
| CURVE #32 = 50.77' R=125.00' C LEN=50.93' BRG=N 45.3628° E |
| CURVE #33 = 50.77' R=125.00' C LEN=50.93' BRG=N 45.3628° E |
| CURVE #34 = 29.80' R=230.00' C LEN=29.78' BRG=S 23.0059° W |
| CURVE #35 = 9.82' R=230.00' C LEN=9.82' BRG=S 09.1402° W |



LEGAL DESCRIPTION:
 Part of Section 2, Township 13 North, Range 3 East, Crawford County, Arkansas, and being more particularly described as follows:
 From the Northwest Corner of the Southeast Quarter of the Northwest Quarter of said Section 2,
 run N89°27'20"E a distance of 1382.23 ft. to a point;
 thence run S00°13'59"E a distance of 485.20 ft. to a point;
 thence run S89°27'01"E a distance of 379.75 ft. to a point;
 thence run N82°35'24"W a distance of 167.65 ft. to a point;
 thence run N86°17'26"W a distance of 338.21 ft. to a point;
 thence run S84°54'45"W a distance of 100.29 ft. to a point;
 thence run S80°09'19"W a distance of 195.33 ft. to a point;
 thence run N00°17'28"W a distance of 482.23 ft. to a point;
 thence run N25°43'43"E a distance of 738.15 ft. to a point, said point being the point of beginning, containing 16.07 acres, and being subject to any easements of record.

CERTIFICATE OF SURVEY:
 To all parties interested in Title to these premises, I hereby certify that I have prior to this day made a survey of the above described property as shown on the Plat of Survey hereon. The property lines and corner monuments, to the best of my knowledge and ability, are correctly established. The improvements are as shown on the Plat of Survey. Encroachments, if any, as disclosed by Survey, are shown hereon.

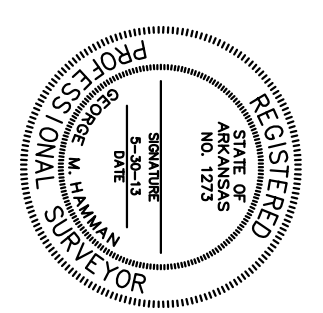
VALLEY VIEW MANOR

JONESBORO, ARKANSAS

ENGINEERS PLANNERS SURVEYORS

Civilogic

RECORD PLAT
 VALLEY VIEW MANOR
 JONESBORO, ARKANSAS
 FOR
 MADISON ESTIMATES, LLC



DATE 05-30-13
 SCALE 1"=50'
 SHEET 2 OF 2
 DRAWN BY RE
 CHECKED BY GH

OWNER'S CERTIFICATION:

We hereby certify that we are the owners of the property shown and described hereon, that we adopt the plan of subdivision and dedicate perpetual uses of all streets and easements as noted.

RIGHT-OF-WAY RESERVED FOR FUTURE CONSTRUCTION OF STREET NOT REQUIRED IN THIS AREA.

- LEGEND**
- ⊙ EXISTING SEWER MANHOLE
 - WATER LINE
 - EXISTING SANITARY SEWER LINE
 - ⊙ PROPOSED SANITARY SEWER LINE
 - ⊙ PROPOSED WATER METER
 - ⊙ PROPOSED SEWER MANHOLE
 - BUILDING SETBACK
 - UTILITY EASEMENT
 - S.S.E. SANITARY SEWER EASEMENT
 - FIRE HYDRANT
 - ⊙ DRAINAGE EASEMENT
 - △ FIRE HYDRANT
 - TRANSFORMER

