

ORDINANCE NO. _____

AN ORDINANCE TO AMEND CHAPTER 117, KNOWN AS THE ZONING ORDINANCE PROVIDING FOR CHANGES IN ZONING BOUNDARIES;

BE IT ORDAINED BY THE CITY COUNCIL OF JONESBORO, ARKANSAS:

SECTION 1: CHAPTER 117, KNOWN AS THE ZONING ORDINANCE OF THE CITY OF JONESBORO, ARKANSAS BE AMENDED AS RECOMMENDED BY THE METROPOLITAN AREA PLANNING COMMISSION BY THE CHANGES IN ZONING CLASSIFICATION AS FOLLOWS:

FROM: **Industrial I-2**
TO: **Industrial I-1**

THE FOLLOWING DESCRIBED PROPERTY:

LEGAL DESCRIPTION:

Lots 4R-B of the Acrowood South Second Replat as shown by plat recorded in Booc "C", Page 101 in the Circuit Clerk's Office in the Craighead County Courthouse, Jonesboro, AR, as recorded as Document 2021R-023177, dated 09/32/2021 at 2:11:14 p.m.

SECTION 2: THE REZONING OF THIS PROPERTY SHALL ADHERE TO THE FOLLOWING STIPULATIONS:

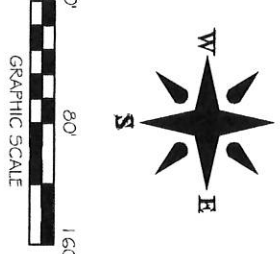
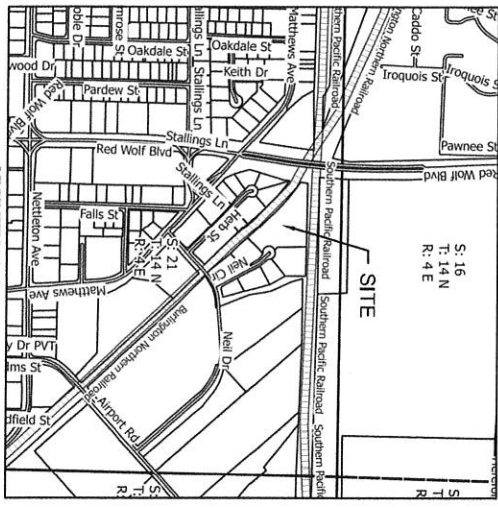
- 1) That the proposed site shall satisfy all requirements of the City Engineer, all requirements of the current Stormwater Drainage Design Manual and Flood Plain Regulations regarding any new construction.
- 2) A final site plan subject to all ordinance requirements shall be submitted, reviewed and approved by the Planning Department prior to any redevelopment of the property.
- 3) Any change of use shall be subject to Planning Department approval in the future.
- 4) A final site plan illustrating compliance with site requirements for parking, signage, landscaping, fencing, buffering, outdoor storage, dumpster enclosure, sidewalks, etc. shall be submitted to the Planning Department prior to any redevelopment of this property.

PASSED AND ADOPTED THIS _____ DAY OF _____, 2021.

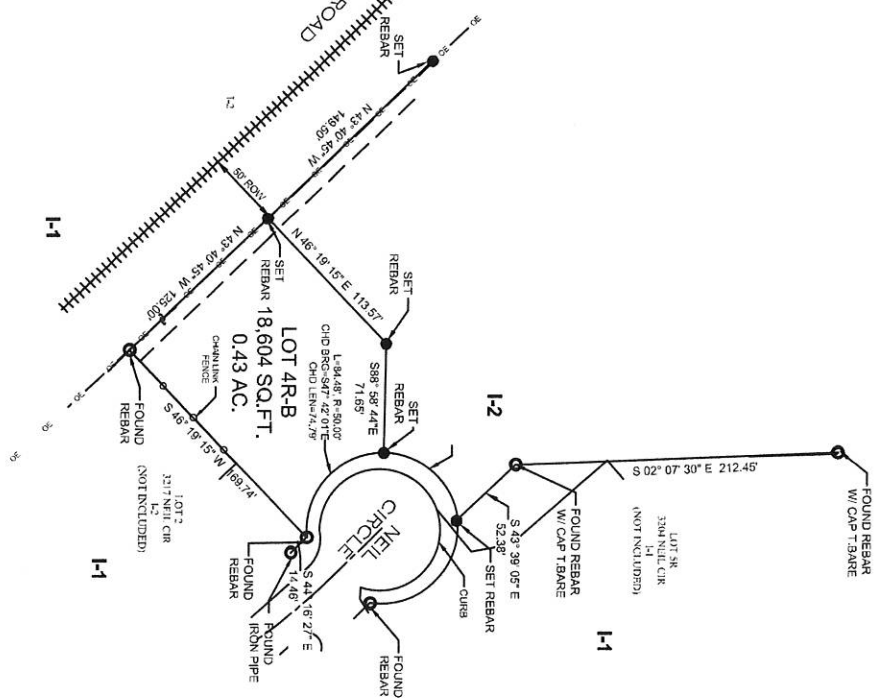
HAROLD COPENHAVER, MAYOR

ATTEST:

APRIL LEGGETT, CITY CLERK



EXISTING ZONING I-2
REQUESTED ZONING I-1, L.U.O.



NOTES:

- 1) All bearings are based on Arkansas North State Plane Coordinate system.
- 2) The recording jurisdiction for this plat is the Arkansas State Office.
- 3) The recording jurisdiction for this plat is the Arkansas State Office.
- 4) All corner monuments set are of rebar unless otherwise noted on the plat.
- 5) All corner monuments set are of rebar unless otherwise noted on the plat.
- 6) All corner monuments set are of rebar unless otherwise noted on the plat.
- 7) All corner monuments set are of rebar unless otherwise noted on the plat.
- 8) All corner monuments set are of rebar unless otherwise noted on the plat.
- 9) All corner monuments set are of rebar unless otherwise noted on the plat.
- 10) All corner monuments set are of rebar unless otherwise noted on the plat.

LEGAL DESCRIPTION:

LOT 4R-B OF REPLAT OF LOT 4R OF ARCOWOOD SOUTH SECOND REPLAT

CERTIFICATE OF SURVEY:

To all parties interested in this plat, the undersigned hereby certifies that the plat is a true and correct copy of the original survey as shown on the plat of survey upon which this plat is based and that the same is a true and correct copy of the original survey as shown on the plat of survey upon which this plat is based and that the same is a true and correct copy of the original survey as shown on the plat of survey upon which this plat is based.

CERTIFICATE OF OWNERSHIP:

We hereby certify that we are the owners of the property shown and described herein, that we accept the duty of subdivision and dedicate perpetual use of all streets and easements as noted.

The Subdivisor or developer must, before the date of this plat, either comply with the requirements defined in Section 15-62.03 of the Arkansas Subdivision Regulations and file a copy of the subdivision map with the Arkansas Department of Transportation, or file a copy of the subdivision map with the Arkansas Department of Transportation, or file a copy of the subdivision map with the Arkansas Department of Transportation, or file a copy of the subdivision map with the Arkansas Department of Transportation.

Drawn By: BW		Checked by: GH	
Date	Scale	Job No.	Sheet No.
04-27-2021	1"=80'	121014	
Section	Township	Range	County
21	14N	04E	CRAIGHEAD
1 of 1			

ONLY COPIES WITH VIOLET COLORED SIGNATURE ARE ORIGINAL CIVILOGIC COPIES

© 2021, Civilogic

ENGINEERS PLANNERS SURVEYORS

203 Southwest Dr.-Jonesboro, AR-(870)932-7880-www.civilogic.net

REGISTERED PROFESSIONAL SURVEYOR

CERTIFICATE OF AUTHORIZATION

CIVILOGIC

NO. 329

ARKANSAS ENGINEER

REGISTERED PROFESSIONAL SURVEYOR

STATE OF ARKANSAS

NO. 1752

PROFESSIONAL SURVEYOR

DATE

EXPIRES

SHEET NUMBER

of

LOT 4R-B OF
REPLAT OF LOT 4R OF
ARCOWOOD SOUTH SECOND REPLAT
FOR
HERBERT N. & SHARON STALLINGS
LIVING TRUST