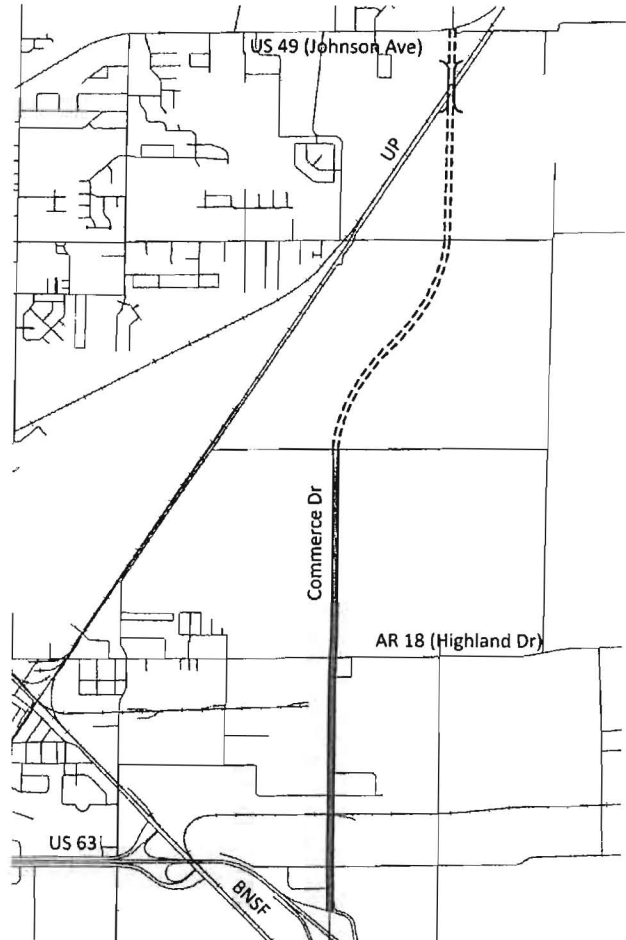
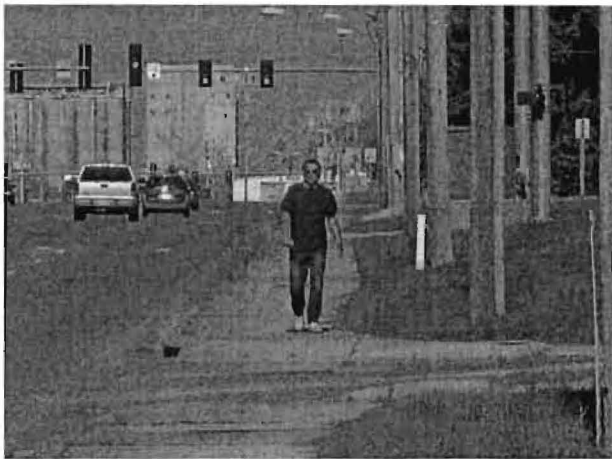


Unified Planning Work Program FY 2014



JONESBORO AREA TRANSPORTATION STUDY METROPOLITAN PLANNING ORGANIZATION

300 South Church Street

P.O. Box 1845

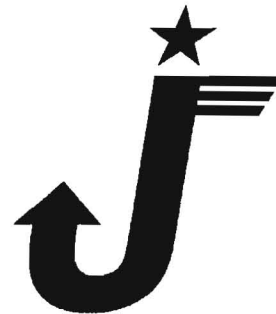
Jonesboro, Arkansas 72403-1845

Telephone: (870) 933-4623

Facsimile: (870) 336-7171

E-mail: mpo@jonesboro.org

Web: www.jonesboro.org/MPO/mpo.htm



FY 2014

(July 1, 2013 – June 30, 2014)

UNIFIED PLANNING WORK PROGRAM

Prepared by the

JONESBORO METROPOLITAN PLANNING ORGANIZATION (MPO)

In Cooperation with the

CITIES OF JONESBORO, BROOKLAND, BONO, AND BAY

COUNTY OF CRAIGHEAD

JONESBORO ECONOMICAL TRANSPORTATION SYSTEM (JETS)

ARKANSAS STATE HIGHWAY AND TRANSPORTATION DEPARTMENT

FEDERAL HIGHWAY ADMINISTRATION

FEDERAL TRANSIT ADMINISTRATION

JONESBORO METROPOLITAN PLANNING ORGANIZATION
NOTICE OF NONDISCRIMINATION

The Jonesboro Metropolitan Planning Organization complies with the Americans with Disabilities Act of 1990, Section 504 of the Rehabilitation Act of 1973, Title VI of the Civil Rights Act of 1964 and other federal equal opportunity laws and therefore does not discriminate on the basis of race, sex, color, age, national origin, religion or disability, in admission or access to and treatment in MPO programs and activities, as well as the MPO's hiring or employment practices. Complaints of alleged discrimination and inquiries regarding the MPO's nondiscrimination policies may be directed to Ms. Gloria Roark, Director of Human Resources, City of Jonesboro, P.O. Box 1845, Jonesboro, Arkansas, 72403-1845, Phone No. (870) 933-4640. Ms. Roark can also be contacted at the following email address: groark@jonesboro.org.

The preparation and publication of this document was financed in part by funds provided by the United States Department of Transportation, Federal Highway Administration, and Federal Transit Administration. The provision of Federal financial assistance should not be construed as denoting U.S. Government approval of plans, policies, programs or projects contained herein.

ADOPTED BY THE POLICY COMMITTEE ON: May 21, 2013

TABLE OF CONTENTS

I.	INTRODUCTION	1
	History of the MPO	3
	Metropolitan Transportation Planning Process.....	3
	Products	4
	Definition of Area.....	5
	Organization.....	5
II.	UPWP TASKS	6
	Task 1.0 Administration and Management Activities.....	6
	Task 2.0 Public Participation/Community Engagement Strategies	7
	Task 3.0 Data Development and Maintenance	8
	Task 4.0 Short-range Planning	9
	Task 5.0 Long-range Planning.....	11
III.	BUDGET SUMMARY	12
APPENDICES		
	Appendix A - Metropolitan Planning Area Map.....	A-1
	Appendix B - Committee Members.....	B-1
	Appendix C - 12 Month Line Item Budget.....	C-1
	Appendix D - Summary of FY 2014 Planning Funds	D-1
	Appendix E - List of Abbreviations	E-1

INTRODUCTION

A metropolitan planning organization is a transportation policy-making organization made up of representatives from local governments and transportation agencies. The Federal Surface Transportation Assistance Act of 1973 required the formation of a metropolitan planning organization for any urbanized area with a population greater than 50,000, a requirement continued by all federal transportation legislation since that time including the most recent law, Moving Ahead for Progress in the 21st Century (MAP-21).

As the designated Metropolitan Planning Organization for the Jonesboro region, the Jonesboro Metropolitan Planning Organization (Jonesboro MPO) is responsible under Section 134 of Title 23, United States Code, for carrying out a “continuing, cooperative and comprehensive” (3C) transportation planning process, resulting in plans and programs that provide for the development, operation and management of transportation facilities that will function as an intermodal transportation system for the metropolitan area. MAP-21 reinforces the idea that transportation planning must be continuing, cooperative, and comprehensive, but adds an emphasis on performance and outcome-based programming, particularly with regard to:

- **Safety**—to achieve a significant reduction in traffic fatalities and serious injuries for all transportation modes;
- **Infrastructure condition**—to maintain the highway and transit infrastructure asset system in a state of good repair;
- **Congestion reduction**—to achieve a significant reduction in congestion on the National Highway System;
- **System reliability**—to improve the efficiency of the surface transportation system;
- **Freight movement and economic vitality**—to improve the national freight network, strengthen the ability of rural communities to access national and international trade markets, and support regional economic development;
- **Environmental sustainability**—to enhance the performance of the transportation system while protecting and enhancing the natural environment; and
- **Reduce project delivery delays**—to reduce project costs, promote jobs and the economy, and expedite the movement of people and goods by accelerating project completion through eliminating delays in the project development and delivery process, including reducing regulatory burdens and improving agencies’ work practices.

In order to achieve these new national goals, the Secretary of Transportation, in consultation with states, metropolitan planning organizations, and other stakeholders, will establish performance measures for: pavement conditions and performance of the Interstate and National Highway Systems, bridge conditions, injuries and fatalities, traffic congestion, on-road mobile source emissions, and freight movement on the Interstate System, as well as for transit safety and transit asset management. States and metropolitan planning organizations will set performance targets in support of these measures, and state and metropolitan plans will describe how program and project selection will help achieve the targets.

At the current time, other metropolitan planning organization requirements remain mostly the same, including requirements for the Unified Planning Work Program (UPWP) under 23 C.F.R. §450.308, which states:

- b. Metropolitan transportation planning activities performed with funds provided under title 23 U.S.C. and title 49 U.S.C. Chapter 53 shall be documented in a unified planning work program (UPWP)[.]
- c. [E]ach metropolitan planning organization (MPO), in cooperation with the State(s) and public transportation operator(s) shall develop a UPWP that includes a discussion of the planning priorities facing the Metropolitan Planning Area (MPA). The UPWP shall identify work proposed for the next one- or two-year period by major activity and task (including activities that address the planning factors in §450.306(a)), in sufficient detail to indicate who (e.g., MPO, State, public transportation operator, local government, or consultant) will perform the work, the schedule for completing the work, the resulting products, the proposed funding by activity/task, and a summary of the total amounts and sources of Federal and matching funds.

As its name suggests, the UPWP promotes a unified regional approach to transportation planning in order to achieve regional goals and objectives. The UPWP performs three distinct functions:

- 1. It describes the transportation planning activities the metropolitan planning organization and other agencies propose to undertake during 2014 to address regional issues and priorities;
- 2. It serves to document the proposed expenditures of federal, state and local funds in support of various planning activities; and
- 3. It provides a management tool for the metropolitan planning organization and the funding agencies in scheduling major transportation planning activities, milestones and products.

The FY 2014 UPWP has been developed by the Jonesboro MPO, with input from local governments, area transit agencies, the Arkansas State Department of Transportation (AHTD), the Federal Transit Administration (FTA), and the Federal Highway Administration (FHWA).

HISTORY OF THE JONESBORO MPO

In 2003, the Governor of the State of Arkansas, acting by and through the Arkansas State Highway and Transportation Department, designated the Jonesboro Area Transportation Study (JATS) Policy Committee to be the Metropolitan Planning Organization (MPO) for the Jonesboro metropolitan area. The Cities of Jonesboro, Brookland, Bono, and Bay and Craighead County agreed with the State to participate in the transportation planning process.

METROPOLITAN TRANSPORTATION PLANNING PROCESS

The transportation planning process must explicitly address eight planning factors identified by MAP-21:

1. Support the economic vitality of the metropolitan area, especially by enabling global competitiveness, productivity, and efficiency;
2. Increase the safety of the transportation system for motorized and non-motorized users;
3. Increase the security of the transportation system for motorized and non-motorized users;
4. Increase the accessibility and mobility of people and for freight;
5. Protect and enhance the environment, promote energy conservation, improve quality of life, and promote consistency between transportation improvements and State and local planned growth and economic development patterns;
6. Enhance the integration and connectivity of the transportation system, across and between modes, for people and freight;
7. Promote efficient system management and operation; and
8. Emphasize the preservation of the existing transportation system.

In addition, the Jonesboro MPO will consider in the metropolitan planning process the Six Livability Principles adopted by the U.S. Department of Transportation, U.S. Department of Housing and Urban Development, and Environmental Protection Agency as a result of their Partnership for Sustainable Communities. These principles are:

1. Provide more transportation choices;
2. Promote equitable, affordable housing;
3. Enhance economic competitiveness;
4. Support existing communities;
5. Coordinate policies and leverage investments; and
6. Value communities and neighborhoods.

PRODUCTS

The major products of the transportation planning process, in addition to the Unified Planning Work Program (UPWP) are the Public Participation Plan (PPP), Metropolitan Transportation Plan (MTP), and Transportation Improvement Program (TIP). Special reports, corridor/subarea studies, and analyses of transportation issues are also produced on a regular basis.

Because public involvement is vital to the success of transportation planning, the **Public Participation Plan** defines a process for providing citizens and other interested parties with reasonable opportunities to be involved in the process. Area residents and other key stakeholders are informed of Jonesboro MPO plans and activities through public notices, advertisements, press releases, and e-mails. In addition, the Jonesboro MPO's website is updated to provide the latest information regarding MPO activities. To enhance its public outreach activities, the Jonesboro MPO has prepared two documents: "MPO Profile" and "ABCs of MPO." These handouts are designed to educate the public on the functions and activities of the MPO. Jonesboro MPO information is also posted on the public access channel (Channel 24). In addition, residents and key stakeholders are informed of, and encouraged to attend, quarterly meetings of the Technical Advisory Committee and the Transportation Policy Committee. Telephone, fax and e-mail lines are open to the public, day and night.

In the development of the Metropolitan Transportation Plans and Transportation Improvement Plans, the Jonesboro MPO seeks out and considers the needs of those traditionally underserved by existing transportation systems, such as low-income and minority households, who may face challenges accessing employment and other services. The MPO also consults with other agencies and officials responsible for planning activities within the Metropolitan Planning Area that are affected by transportation (including State and local agencies and officials involved in planned growth, economic development, environmental protection, airport operations, or freight movements) and coordinates its planning process to the maximum extent possible with such planning activities. In addition, the planning process provides for the design and delivery of transportation services within the area that are supported by the Federal Transit Administration and other federal assistance from the U.S. Department of Transportation and other sources.

The **Metropolitan Transportation Plan** is the centerpiece of the metropolitan transportation planning process. The Jonesboro MPO has developed two transportation plans since its inception. In February 2011, the 2035 Metropolitan Transportation Plan was adopted. The 2035 Metropolitan Transportation Plan was built around the vision of a safe, efficient, well-integrated, environmentally compatible transportation system that fosters livable communities and provides convenient choices for

accessing destinations throughout the Jonesboro Metropolitan Planning Area. The 2035 Plan articulates a broad set of region-wide transportation goals, policies and strategies, including several that are new, such as encouraging the use of context sensitive solutions and complete streets. The Plan identifies major transportation investments expected to be needed through the year 2035. The Plan is financially constrained, intended to reflect funding that is currently available or can reasonably be expected to be available during the plan's time frame. With the 2014 UPWP cycle, work will begin on the 2040 plan, scheduled for completion in February 2016.

The **Transportation Improvement Program** is a prioritized list of transportation projects proposed for implementation during a four year cycle. Projects included in the Transportation Improvement Program must be consistent with the Metropolitan Transportation Plan, and are submitted for consideration by local governments, state transportation agencies, and transit operators. The 2013-2016 Transportation Improvement Program is financially constrained. All regionally significant projects, regardless of funding source, and all projects utilizing federal transportation funds, must be included in the Transportation Improvement Program to proceed to implementation. The Transportation Improvement Program must be completely updated every four years.

As a result of MAP-21, metropolitan planning organization programming must now consider performance and outcomes with regard to safety, infrastructure condition, congestion reduction, system reliability, freight movement and economic vitality, environmental sustainability, and reduced project delivery delays. Federal and state requirements as to how this will take place have not been handed down as of this writing (May 2013).

DEFINITION OF AREA

The Jonesboro MPO's study area (illustrated in Appendix A) was designated in 2003. Pursuant to 23 U.S.C. 134(e)(2)(A), the Jonesboro MPO study area must include, at a minimum, the existing urbanized area (including portions of the cities of Jonesboro and Brookland) and the contiguous area expected to become urbanized within the next 20 years, and may include the entire metropolitan statistical area (Craighead County and Poinsett County) or combined statistical area (Craighead County, Poinsett County and Greene County).

ORGANIZATION

The Jonesboro MPO has a two-committee organizational structure. The Transportation Policy Committee is at the top of the organization, providing policy guidance and approving the work of the Technical Advisory Committee. The Policy Committee is comprised of eleven voting members. They include three members from the City of Jonesboro; one member each from the Cities of Brookland,

Bono, and Bay; two members from Craighead County; two members from the Arkansas State Highway and Transportation Department; and one member from the Community Transportation Advisory Board, the advisory board for the Jonesboro Economical Transportation System (JETS).

The Technical Advisory Committee provides technical support and direction necessary in the transportation planning process. The Committee includes twelve voting members appointed by the member entities for their technical expertise in transportation planning. Additional advisory representatives are included as needed from groups like Arkansas State University, area school districts, local police departments, and railroads serving the area.

The Jonesboro MPO staff provides technical and administrative assistance to both Committees.

Appendix B lists the membership of the Transportation Policy and Technical Advisory Committees.

A list of common abbreviations used in this document is found in Appendix D.

FY 2014 UPWP TASKS

TASK 1.0 ADMINISTRATION AND MANAGEMENT ACTIVITIES

The objective of this task is to coordinate transportation planning activities at the MPO level with the Arkansas State Highway and Transportation Department (AHTD), the Federal Highway Administration (FHWA), the Federal Transit Administration (FTA), publicly owned transit services, and constituent members in the Jonesboro Metropolitan Planning Area. Records of all activities needed for the comprehensive, coordinated, and continuing (3C) transportation planning process will be maintained. The Jonesboro MPO will serve as a liaison between the MPO communities, transportation providers, abutting regions, government agencies, and the general public on transportation-related matters and assist with securing federal and state funding to perform transportation planning in the Jonesboro Metropolitan Planning Area.

This task includes general study coordination and direction, preparation of the UPWP, and preparation of expenditure and progress reports. The MPO staff, Policy Committee and Technical Advisory Committee members will participate in conferences, seminars, training workshops, webinars and meetings to keep acquainted with the latest regulations and techniques in the transportation planning field.¹

¹ On May 21, 2013, the Transportation Policy Committee approved a standing policy to pay expenses for staff and members of the Transportation Policy and Technical Advisory Committees to attend the biennial Arkansas Transportation Planning Conference.

This task also includes limited general technical assistance for member governments (support letters, research on funding matters, etc.). The MPO staff will participate in meetings with local governments, realtors and developers in order to keep abreast of information on any major projects in the region. The MPO staff will provide necessary data and technical support to organizations participating in the MPO transportation planning process.

The Jonesboro MPO, in cooperation with AHTD, will develop and prepare the Annual List of Obligated Projects that will be posted on the website for public inspection each year. The listing shall be consistent with the funding categories identified in the Transportation Improvement Program (TIP).

Expected Product	Completion Date
Monthly Progress and Expenditure Reports	Ongoing
Annual List of Projects	December 2013
2015 UPWP	June 2014
Annual Performance & Expenditure Report	August 2013
Training and Education for staff, Technical and Policy Committees	Ongoing
Technical Assistance to Member Governments	Ongoing
Title VI Program Document Development	June 2014
Assistance to public transit and human service transit providers in coordinating delivery of transit services	Ongoing

Participating Organizations: Jonesboro MPO Staff, Technical Advisory Committee, and Transportation Policy Committee; City of Jonesboro Engineering and Planning Departments; AHTD; JETS

TASK 2.0 PUBLIC PARTICIPATION/COMMUNITY ENGAGEMENT STRATEGIES

The objective of this task is to provide proactive and continuous public participation to insure that plans are responsive to community values and needs. In order to better prepare for the update of the Metropolitan Transportation Plan in 2016, a team of local communications experts will be asked to help revise the Public Participation Plan and to advise on more effective means of outreach to citizens, affected public agencies, private transportation providers, public transportation users, pedestrian and bicycling groups and other interested parties. The website and other means of social media and electronic engagement will be used in order to provide an opportunity for citizens to review, print, and comment upon all MPO documents and reports from the privacy of their homes and offices.

Expected Product	Completion Date
Revise Public Participation Plan	Feb 2014
Website Development and Maintenance	ongoing
Monitor PPP and Engage the Public	ongoing
Purchase of On-line Engagement Tools*	TBD

*Budget for this task includes carryover from FY2012/2013

Participating Organizations: Jonesboro MPO Staff, Communications Committee to include representatives from ASU, Jonesboro Regional Chamber of Commerce, Local Media Outlets

TASK 3.0 DATA DEVELOPMENT AND MAINTENANCE

The objective of this task is to coordinate local, state, and regional efforts in developing and updating the data needed for transportation planning and development. Data from Census 2010, the American Community Survey (ACS), and the Census Transportation Planning Products (CTPP), among other sources, will be used to create a repository for data needed for the development of a regional metropolitan transportation plan. The data will also be used by the MPO and local governments to prepare and revise comprehensive plans and for other uses. Data will be used for scenario planning to support development of the 2040 Metropolitan Transportation Plan. The budget includes funding for technical assistance to optimize CommunityViz outputs.

Update of the study area and functional classification maps, in order to incorporate the 2010 Census-defined urbanized area and reflect anticipated urban development over the next 20 years, will be completed. Better methods of traffic forecasting will be explored; coordination with AHTD to use their statewide travel demand model is possible. Analysis of crash data from 2010-present will be performed, with emphasis on pedestrian and bicycle crashes, preparatory to Metropolitan Transportation Plan development.

Expected Product	Completion Date
GIS Database Development & Maintenance	Ongoing
Update Study Area Map	Dec 2013
Update Functional Classification Map	Dec 2013
Analysis of Crash Data	June 2014
CommunityViz Optimization*	June 2014
Beginning Scenario Development for MTP	Ongoing
Update traffic forecasts	Ongoing

*Budget for this task includes carryover from FY2012/2013

Participating Organizations: Jonesboro MPO Staff and Technical Advisory Committee; City of Jonesboro Engineering, GIS, Planning and Police

Status of Projects from Previous UPWP

The 2013 UPWP included funding for the following tasks that were not completed. An explanation regarding each task follows:

Subtask 3.3 Origin and Destination Study for US 49

The MPO staff attempted to study traffic patterns between US 49 North and US 63 South, utilizing automated license plate recognition technology. The objective of the study was to generate data that could be used to evaluate alternatives for relieving traffic on Stadium Boulevard, particularly the improvement of an existing bypass route between US 49 and US 63 South. The study was terminated after four weeks when it was determined that the equipment did not perform to expectations.

Subtask 3.4 Roundabout Study

A study on the feasibility of constructing a roundabout at the intersection of Aggie Road and Airport Road was planned. However, in the meantime, the City of Jonesboro decided to move forward with design and construction of roundabout in this location, making the need for this study moot.

All other projects in the FY 2013 UPWP were either completed or carried over to this UPWP.

TASK 4.0 SHORT-RANGE PLANNING

The objective of this task is to maintain and update the FY 2013-2016 Transportation Improvement Program (TIP). In addition, the Jonesboro MPO will carry out, facilitate, and assist with various planning studies to explore the need for other projects to be included in the MTP or TIP.

The current transportation bill, MAP-21, requires the development of performance measures on safety, infrastructure condition, congestion reduction, system reliability, freight movement and economic vitality, environmental sustainability, transit safety and transit asset management, and reduction of project delivery delays. The MPO staff will monitor and review federal performance rule-making, coordinate the development of performance measures and targets with AHTD, and assist JETS with the development of transit performance targets.

The Jonesboro MPO is currently assisting the City of Jonesboro staff in the development of policies for managing access to commercial and multifamily developments from major roadways. With the completion of the work, revised or new ordinances regulating the number and locations of commercial and multifamily access points on major roadways, plus guidelines for conducting transportation impact studies, will be developed.

The AHTD has recently completed the Arkansas Statewide Transit Coordination Plan. This plan outlines strategies to better coordinate transit services among public transit and human service transportation providers. The Jonesboro MPO will monitor existing transit coordination activities with JETS and other transit agencies.

Jonesboro MPO staff will continue providing technical assistance regarding the transportation portion of Jonesboro *Vision 2030* and assist in the development of the Future Land Use Plan. The MPO will also take the lead in preparing the City of Jonesboro's Master Street Plan in order to better coordinate the results with the MPO's functional classification map, TIP and MTP. The MPO will coordinate the work of consultants to develop a bicycle-pedestrian safety plan for Johnson Avenue from Main Street to Caraway Road and a pedestrian safety-traffic study for downtown Jonesboro.

New funds will be available to local governments as a result of the ½ cent sales tax approved by voters during the 2012 general election and the State Aid Street Fund. The MPO will provide technical assistance to develop new projects from these sources as well as other projects that have previously been identified. The MPO will provide technical assistance as needed on the following projects, among others:

City of Jonesboro

- Commerce Drive
- Highway 18/Nettleton Railroad Grade Separation
- South Caraway Bridge Replacement

Craighead County

- Paving of CR 452/CR 476 from US 49 to AR 1
- Replacement of UP railroad overpass on CR 108/Strawfloor Drive
- Bono bridge replacement

City of Brookland

- Widening of West School Street between US 49 and US 49B

Expected Product	Completion Date
TIP Amendments/Updates	Ongoing
Monitor performance measurement rule-making and develop performance measures in coordination with AHTD	Ongoing
Consultant Led Johnson Avenue Bike-Ped Safety Study*	Mar 2014
Project Management Johnson Avenue Bike-Ped Safety Study	Mar 2014
Consultant Led Downtown Jonesboro Pedestrian Safety/Traffic Study*	Mar 2014
Project Management Downtown Jonesboro Ped Safety/Traffic Study	Mar 2014
Technical Assistance on Member Government Projects	Ongoing
Jonesboro Master Street Plan	June 2014

*Budget for this task includes carryover from FY2012 and FY 2013

Participating Organizations: MPO Staff & Technical Advisory Committee; Jonesboro Planning, Engineering, GIS, Police Department, City Council, Master Street Plan Committee; consultants, other member government staff and elected officials as needed.

TASK 5.0 LONG-RANGE PLANNING

The objective of this task is to maintain the Regional Intelligent Transportation System Plan developed in 2012, and to begin the process of updating the Metropolitan Transportation Plan, due February 2016, as well as perform other long range planning activities as needed. Activities discussed under other tasks, for example, using CommunityViz for scenario development, updating data post-2010 Census, updating the Public Participation Plan, and developing performance measures, will support the development of the (MTP) to meet the requirements of MAP-21. Additionally, a survey will be conducted to help determine community values that should be incorporated in the plan. The Metropolitan Transportation Plan will address the 2040 planning horizon.

Expected Product	Completion Date
ITS Architecture	Revisions as needed or required by maintenance plan
Initial Scenario Development	June 2014
Community Values Survey*	June 2014
2040 Metropolitan Transportation Plan	February 2016

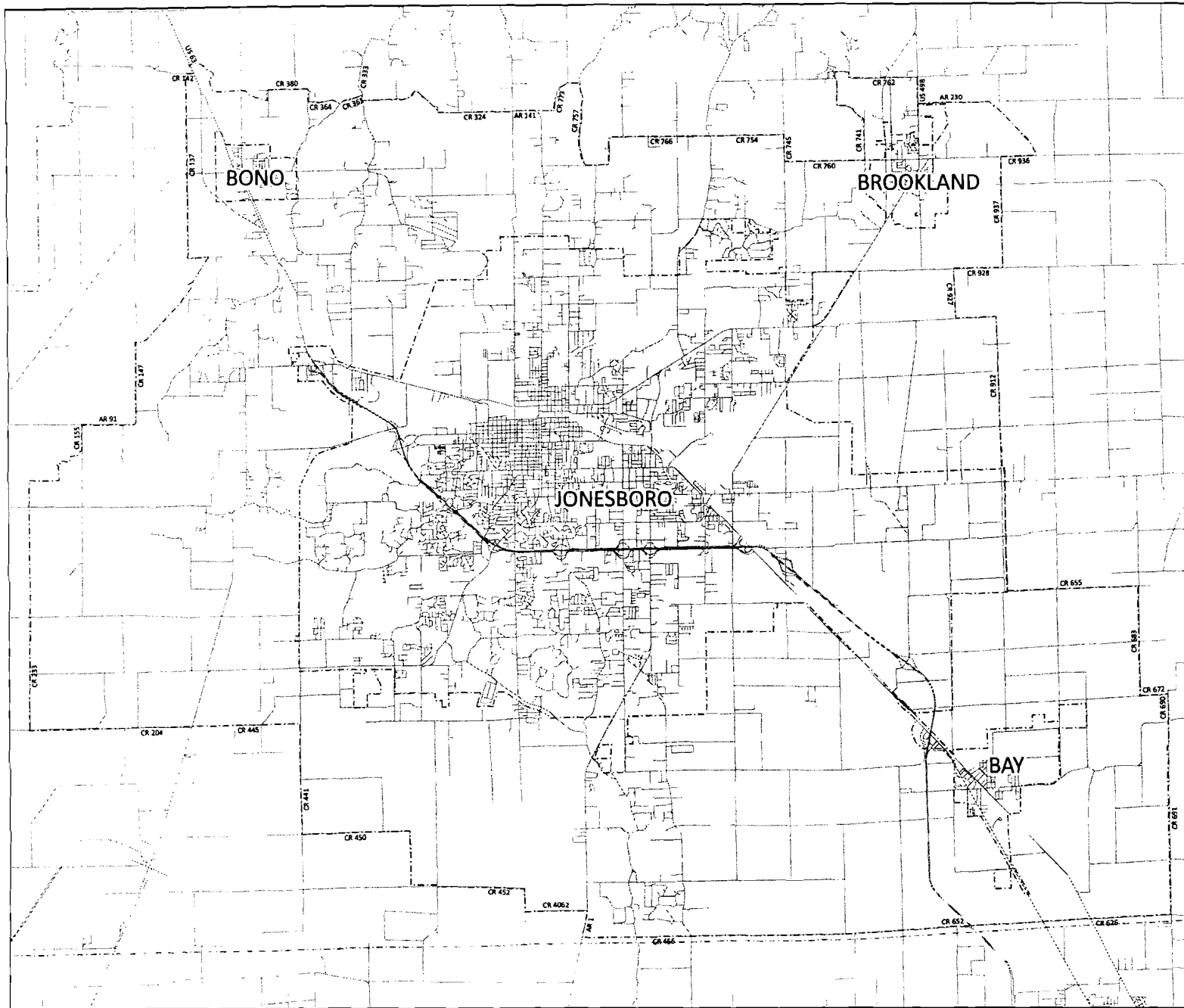
*Budget for this task includes carryover from FY2012 and FY 2013

Participating Organizations: Jonesboro MPO Staff, Technical Advisory Committee and Transportation Policy Committee; members of many other organizations, including the Jonesboro Regional Chamber of Commerce, ASU officials, member governments, school district officials, East Arkansas Planning and Development District, members of the general public, JETS Board and riders.

BUDGET SUMMARY
JONESBORO AREA TRANSPORTATION STUDY
METROPOLITAN PLANNING ORGANIZATION

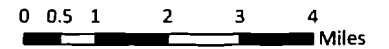
UPWP TASK	Description	Federal	Local	Total
1	ADMINISTRATION and MANAGEMENT	\$50,000	\$12,500	\$62,500
2	PUBLIC PARTICIPATION/ COMMUNITY ENGAGEMENT	\$18,800	\$4,700	\$23,500
3	DATA DEVELOPMENT and MAINTENANCE	\$13,600	\$3,400	\$17,000
4	SHORT-RANGE PLANNING	\$97,600	\$24,400	\$122,000
5	LONG-RANGE PLANNING	\$41,600	\$10,400	\$52,000
Total		\$221,600	\$55,400	\$277,000

APPENDIX A
METROPOLITAN PLANNING AREA MAP



MPO Study Area

The Study Area of the Jonesboro Metropolitan Planning Organization is comprised of the cities of Jonesboro, Brookland, Bay and Bono, and the unincorporated areas of Craighead County that are expected to become urbanized within the next twenty years.



Legend

- City Limits
- MPO Study Area
- County Line
- Road

Jonesboro Area Transportation Study (JATS)
Metropolitan Planning Organization (MPO)

300 South Church Street
Jonesboro, Arkansas 72401
Telephone: (870) 933-4623
Facsimile: (870) 336-7171
E-mail: mpo@jonesboro.org
Web: www.jonesboro.org/MPO/mpo.htm

APPENDIX B
COMMITTEE MEMBERS

**JONESBORO AREA TRANSPORTATION STUDY
METROPOLITAN PLANNING ORGANIZATION
TRANSPORTATION POLICY COMMITTEE**

VOTING MEMBERS

John Street, Chair	Council Member	City of Jonesboro
Darrell Kirby, Vice Chair	Mayor	City of Bay
Ed Hill	County Judge	Craighead County
Kenneth D. Jones	Mayor	City of Brookland
Billy Stephens	Mayor	City of Bono
Harold Perrin	Mayor	City of Jonesboro
Ann Williams	Council Member	City of Jonesboro
Bob Blankenship	Quorum Court Member, Craighead County	Craighead County
Alan Meadors	Planning and Research Engineer	Arkansas State Highway and Transportation Department
Walter McMillan	District Engineer	Arkansas State Highway and Transportation Department
Jimmy Cooper	Chairperson	Community Transportation Advisory Board

EX-OFFICIO, NON-VOTING MEMBERS

Gary DalPorto	Planning & Research Engineer	Federal Highway Administration
Donald Koski	Director of Planning and Program Development	Federal Transit Administration

**JONESBORO AREA TRANSPORTATION STUDY
METROPOLITAN PLANNING ORGANIZATION
TECHNICAL ADVISORY COMMITTEE**

VOTING MEMBERS

Duane Harvey, Chairperson	Business Owner	City of Brookland
Robert Wood, Vice Chairperson	Developer	Craighead County
Craig Light	City Engineer	City of Jonesboro
Rick Rorex	Vice President, Rice Milling and Engineering, Riceland Foods	City of Jonesboro
Bill Hall	University Planner, Arkansas State University	City of Jonesboro
David Moore	Director, Emergency Management	Craighead County
Vacant		City of Bono
Larry Hall	Council Member	City of Bay
John Spears	MPO Coordinator	Arkansas State Highway and Transportation Department
Brad Smithee	District Construction Engineer	Arkansas State Highway and Transportation Department
Rev. Charlene Johnson	Vice Chairperson	Community Transportation Advisory Board
Steven Alexander	Administrative Officer	Arkansas State Highway and Transportation Department

EX-OFFICIO, NON-VOTING MEMBERS

Gary DalPorto	Planning & Research Engineer	Federal Highway Administration
Donald Koski	Director of Planning and Program Development	Federal Transit Administration

APPENDIX C
12 MONTH LINE ITEM BUDGET

12-Month Line Item Budget

Expenditure Summary

Task #	Description	Staff Time	Other Expenses	Total	Rounded Total
1	Administration and Management Activities	\$ 48,895.96	\$ 13,784.00	\$ 62,679.96	\$ 62,500.00
2	Public Participation/Community Engagement Strategies	\$ 8,422.80	\$ 15,000.00	\$ 23,422.80	\$ 23,500.00
3	Data Development and Maintenance	\$ 16,954.88	\$ -	\$ 16,954.88	\$ 17,000.00
4	Short-Range Planning	\$ 21,932.07	\$ 100,000.00	\$ 121,932.07	\$ 122,000.00
5	Long-Range Planning	\$ 21,932.07	\$ 30,000.00	\$ 51,932.07	\$ 52,000.00
Total		\$ 118,137.77	\$ 158,784.00	\$ 276,921.77	\$ 277,000.00

Other Expenses

Line	Description	Expense
209	Travel and Training	\$ 3,000.00
213	Telephone Expense	\$ 1,250.00
214	Utilities	\$ -
215	Insurance and Licenses	\$ 201.00
217	Professional Services	\$ 145,000.00
218	Postage	\$ 300.00
220	Advertising and Printing	\$ 2,000.00
221	Maintenance Building and Grounds	\$ -
222	Equipment Maintenance	\$ 300.00
224	Supplies	\$ -
224-01	Office Supplies	\$ 1,500.00
228	Dues and Subscriptions	\$ 2,000.00
231	Towing	\$ -
232	Fixed Assets	\$ -
232-01	Minor Equipment and Furniture	\$ -
233	Rentals and Contracts	\$ 1,000.00
279	Unemployment/Workman's Compensation	\$ 883.00
296	Computer Software	\$ 300.00
318	Maintenance Contracts	\$ 1,050.00
Total		\$158,784.00

Professional Services Detail

Line	Description	Expense
217	Johnson Avenue Bike-Ped Safety Study	\$70,000.00
217	Downtown Jonesboro Pedestrian Safety/Traffic Study	\$30,000.00
217	CommunityViz Consultancy	\$15,000.00
217	Community Values Survey	\$15,000.00
217	On-line Engagement Tools	\$15,000.00
Total		\$145,000.00

Task-Time Breakout

Task	Marsha	Travis
1	50%	20%
2	10%	0
3	0	50%
4	20%	15%
5	20%	15%
TOTAL	100%	100%

Expenditure versus Source

Category	FY14 Proposed Expenditures	FY14 Anticipated Revenues	Difference (Remaining)
Operating	\$ 132,000.00	\$ 137,500.00	\$ 5,500.00
Category	2014 Proposed Expenditures	FY12-FY13 Est. Carryover	Difference (Remaining)
Special Projects	\$145,000.00	\$ 180,000.00	\$ 35,000.00
All	\$ 277,000.00	\$ 317,500.00	\$ 40,500.00

Budget Summary

Federal Available (Est.)	\$ 254,000.00
Local Match (25% of Federal)	\$ 63,500.00
Sub-total	\$ 317,500.00
Additional Local	\$ -
Total Available	\$ 317,500.00
Total Programmed	\$ 277,000.00
Balance	\$ 40,500.00

APPENDIX D
SUMMARY OF FY2014 PLANNING FUNDS

FTA CONSOLIDATED PLANNING WORK PROGRAM
SECTION 5303 (STATE FISCAL YEAR 2014 SUMMARY)
FHWA/FTA CONSOLIDATED METROPOLITAN PLANNING PROGRAM

	FEDERAL	LOCAL/ STATE	TOTAL	FEDERAL SHARE
Jonesboro Area Transportation Study	\$ 112,676	\$ 28,169	\$ 140,845	80%
SUBTOTAL	\$ 1,976,769	\$ 494,192	\$ 2,470,961	

SECTION 5304
FTA STATEWIDE PLANNING PROGRAM

Arkansas State Highway and Transportation Department				
Program Support and Administration	\$ 48,000	\$ 12,000	\$ 60,000	80%
Safety & Security/Drug-Alcohol Planning	\$ 20,000	\$ 4,000	\$ 24,000	80%
Elderly/Disabled/Low Income Service Planning	\$ 20,000	\$ 5,000	\$ 25,000	80%
Staff Training and Development	\$ 21,603	\$ 5,401	\$ 27,004	80%
SUBTOTAL	\$ 109,603	\$ 26,401	\$ 136,004	
TOTAL PROJECT COSTS	\$ 2,086,372	\$ 520,593	\$ 2,606,965	

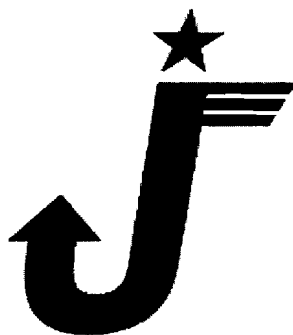
FY 2014 METROPOLITAN PLANNING FUNDS

MPO AREA	2010 POPULATION	DISTRIBUTIO N FACTOR	FHWA PL \$	FTA PL \$	TOTAL
JATS	65,419	0.057	\$ 88,814	\$ 23,862	\$ 112,676
	1,149,839	1.000	\$ 1,558,146	\$ 418,623	\$ 1,976,769

Note: The Fiscal Year 2013 FHWA PL Allocation is \$1,558,147, including a 95.74% obligation.
The table shows Fiscal Year 2013 FTA PL Allocation of \$418,623.

Appendix E
LIST OF ABBREVIATIONS

ACS	American Community Survey
AHTD	Arkansas State Highway and Transportation Department
ALOP	Annual List of Projects
ASU	Arkansas State University
C.F.R.	Code of Federal Regulations
CTPP	Census Transportation Planning Products
DOT	United States Department of Transportation
EAPDD	East Arkansas Planning and Development District
EPA	Environmental Protection Agency
FHWA	Federal Highway Administration
FTA	Federal Transit Administration
FY	Fiscal Year
GIS	Geographic Information System
HUD	Department of Housing and Urban Development
ITS	Intelligent Transportation System
JATS	Jonesboro Area Transportation Study
JETS	Jonesboro Economical Transportation System
MAP-21	Moving Ahead for Progress in the 21st Century
MPO	Metropolitan Planning Organization
MTP	Metropolitan Transportation Plan
PPP	Public Participation Plan
TIP	Transportation Improvement Program
UPWP	Unified Planning Work Program
U.S.C.	United States Code



Jonesboro Area Transportation Study (JATS)
Metropolitan Planning Organization (MPO)
300 South Church Street
P.O. Box 1845 (72403)
Jonesboro, AR 72401
Telephone: (870) 933-4623
Facsimile: (870) 336-7171
E-mail: mpo@jonesboro.org
www.jonesboro.org/MPO/mpo.htm