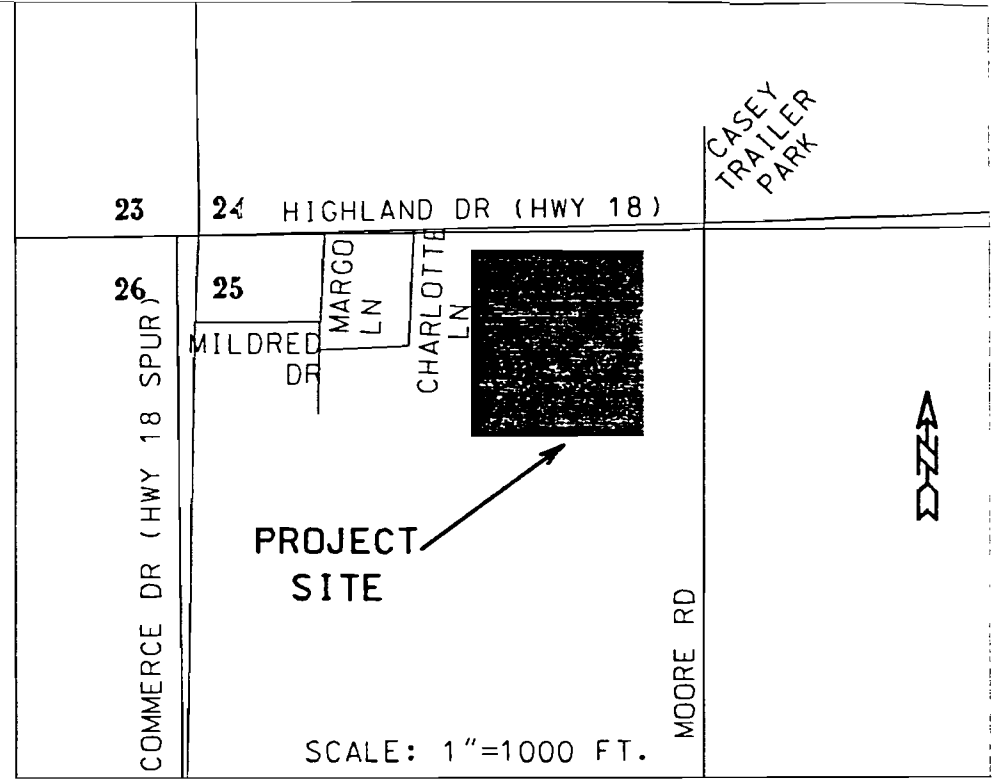


EXISTING AG-1 ZONING  
REQUESTED C-3 ZONING



**LEGAL DESCRIPTION AS SURVEYED:**

A PART OF THE NORTHWEST QUARTER OF SECTION 25, TOWNSHIP 14 NORTH, RANGE 4 EAST, CRAIGHEAD CO., ARKANSAS TO WIT: FROM THE NORTHWEST CORNER OF THE NORTHEAST QUARTER OF THE NORTHWEST QUARTER SAID SECTION 25, RUN S 89°50'00" E A DISTANCE OF 70.00 FT. TO A POINT; THENCE S 01°20'00" W A DISTANCE OF 336.90 FT. TO THE POINT OF BEGINNING; THENCE S 89°35'24" E A DISTANCE OF 292.02 FT. TO A POINT; THENCE N 00°50'53" E A DISTANCE OF 262.16 FT. TO A POINT; THENCE N 77°49'00" E A DISTANCE OF 114.43 FT. TO A POINT; THENCE N 89°58'42" E A DISTANCE OF 46.93 FT. TO A POINT; THENCE S 00°17'00" E A DISTANCE OF 218.50 FT. TO A POINT; THENCE S 89°10'00" E A DISTANCE OF 160.00 FT. TO A POINT; THENCE N 00°17'00" W A DISTANCE OF 220.89 FT. TO A POINT; THENCE N 89°58'42" E A DISTANCE OF 22.77 FT. TO A POINT; THENCE S 01°23'00" W A DISTANCE OF 193.59 FT. TO A POINT; THENCE S 89°51'00" E A DISTANCE OF 129.20 FT. TO A POINT; THENCE S 01°23'00" W A DISTANCE OF 849.99 FT. TO A POINT; THENCE N 88°33'04" E A DISTANCE OF 436.45 FT. TO A POINT; THENCE S 01°01'00" W A DISTANCE OF 99.26 FT. TO A POINT; THENCE S 86°33'04" W A DISTANCE OF 430.30 FT. TO A POINT; THENCE S 88°33'04" W A DISTANCE OF 771.03 FT. TO A POINT; THENCE N 01°37'46" E A DISTANCE OF 678.28 FT. TO THE POINT OF BEGINNING, CONTAINING 17.82 ACRES.

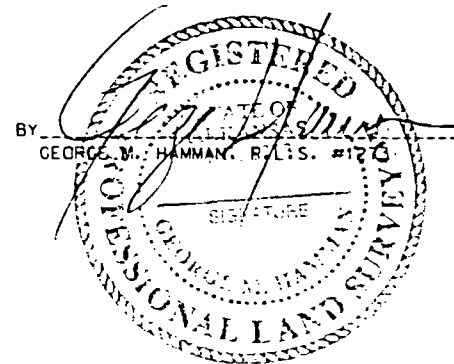
**OWNER'S CERTIFICATION:**

WE HEREBY CERTIFY THAT WE ARE THE OWNERS OF THE PROPERTY SHOWN AND DESCRIBED HEREON, THAT WE ADOPT THE PLAN OF SUBDIVISION AND DEDICATE PERPETUAL USE OF ALL STREETS AND EASEMENTS AS NOTED.

*J. White, Inc.*  
*Margaret Petrey, One S.*

**CERTIFICATE OF SURVEY:**

TO ALL PARTIES INTERESTED IN TITLE TO THESE PREMISES: I HEREBY CERTIFY THAT WE HAVE PRIOR TO THIS DAY MADE A SURVEY OF THE ABOVE DESCRIBED PROPERTY AS SHOWN ON THE PLAT OF SURVEY HEREON. THE PROPERTY LINES AND CORNER MONUMENTS, TO THE BEST OF MY KNOWLEDGE AND ABILITY, ARE CORRECTLY ESTABLISHED. ENCROACHMENTS, IF ANY, AS DISCLOSED BY SURVEY, ARE SHOWN HEREON.



BY George M. Hamman  
GEORGE M. HAMMAN, R.L.S. #2176

12/15/98  
DATE

**HNE** ENGINEERS - SURVEYORS  
2311 E. NETTLETON AVE.  
JONESBORO, AR 72401  
(501) 932-7880

REZONING PLAT  
PT. NW 1/4 SEC. 25, T14N. R4E  
FOR  
MARGARET PETREY  
JONESBORO, ARKANSAS