



# Vector Disease Control, Inc.

## Mosquito Surveillance and Control Report

### City of Jonesboro

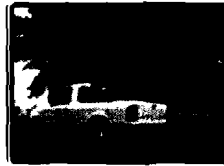
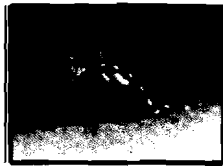
June, 2008

2221 N. Church St. Jonesboro, AR 72401

T-870.933.6939 F- 866.839.8595

Business Office . PO Box 566 DeWitt, AR 72042 . 800.413.4445

[www.vdci.net](http://www.vdci.net)





## **City of Jonesboro Activity Report**

**June, 2008**

Vector Disease Control, Inc. (VDCI) provides a proven, scientific approach to mosquito control for the city of Jonesboro. VDCI's operations include larval and adult mosquito surveillance followed by the application of larvicides and adulticides. In addition, our office responds to service requests from the public.

### **Mosquito Surveillance**

VDCI has utilized a total of thirteen (13) New Jersey light traps placed in residential and recreational areas throughout Jonesboro during this reporting period. These traps collected an average of 4.7 mosquitoes per trap night (243 total mosquitoes). There have been a total of 5 mosquito species collected, with *Aedes vexans* being the most predominant species. With an average trap count of 16.7, the Oakhill trap has consistently collected the most mosquitoes.

### **Larval Control Activity**

Permanent water, flood water, artificial containers, and drainage system sites are inspected for larval mosquito breeding on a regular basis. In total, 26 site inspections found the presence of mosquito larvae. As a result of these inspections, 252 ounces (15.75 pounds) of granular BTI (Aquabac 400g) and 6 Altosid XR briquettes were applied to these mosquito breeding sites. Additionally, VDCI is continuing to eliminate breeding habitats for artificial container mosquitoes by targeting bird baths, buckets, tires, etc.

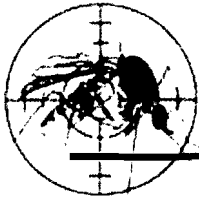


### **Adult Mosquito Control Activity**

In response to community events and mosquito surveillance data, VDCI applied the adulticide Permanone 30-30 on ten (10) truck nights for this reporting period. All ten adulticide ULV applications were made with truck-mounted ULV units equipped with GPS-enabled monitors. During this report period, a total of 937 spray miles (34,072 acres) were treated with a total of 181 gallons of Permanone 30-30 adulticide in residential and recreational areas. In addition to routine truck spraying, VDCI has responded to 27 service requests and adulticided for all parks and any special events, including softball and soccer tournaments, during this month.

### **Summary**

During the month of June, VDCI has continued to provide exceptional control of larval and adult mosquito populations. VDCI will remain diligent in our surveillance and control activities to prevent a significant increase in the mosquito population. Based on recent weather conditions VDCI expects the trend of routine adulticiding and larviciding to continue. However, if VDCI detects a significant rise in the mosquito population we will increase larval and adult control. As always, VDCI welcomes residents with any mosquito-related questions or concerns to contact VDCI's Jonesboro office directly at 870.933.6939.



# Adult Mosquito Surveillance Report

Start Date: 6/1/2008

End Date: 6/30/2008

Jonesboro

Trap Location	Date Trap Set	Trap Type	Mosquito Species	No. Collected
<b>Zone 1 Collections</b>				
Shady Lane	6/3/2008	NJ Light Trap	<i>Aedes vexans</i>	1
Shady Lane	6/10/2008	NJ Light Trap	No Mosquitoes	0
Shady Lane	6/18/2008	NJ Light Trap	<i>Psorophora columbiae</i>	5
Shady Lane	6/23/2008	NJ Light Trap	<i>Psorophora columbiae</i>	4
<b>Trap Total</b>				10 (Avg. 2.5)
Sugar Ridge	6/3/2008	NJ Light Trap	<i>Aedes vexans</i>	3
Sugar Ridge	6/10/2008	NJ Light Trap	<i>Aedes vexans</i>	8
Sugar Ridge	6/18/2008	NJ Light Trap	<i>Aedes vexans</i>	1
			<i>Psorophora columbiae</i>	1
Sugar Ridge	6/23/2008	NJ Light Trap	<i>Aedes vexans</i>	2
			<i>Psorophora columbiae</i>	5
<b>Trap Total</b>				20 (Avg. 5)
<b>Zone 2 Collections</b>				
Strawfloor	6/3/2008	NJ Light Trap	<i>Aedes vexans</i>	4
Strawfloor	6/10/2008	NJ Light Trap	No Mosquitoes	0
Strawfloor	6/18/2008	NJ Light Trap	<i>Aedes vexans</i>	3
			<i>Psorophora columbiae</i>	1
Strawfloor	6/23/2008	NJ Light Trap	<i>Aedes vexans</i>	3
			<i>Psorophora columbiae</i>	1
<b>Trap Total</b>				12 (Avg. 3)
<b>Zone 3 Collections</b>				
Ridgepointe	6/5/2008	NJ Light Trap	<i>Aedes vexans</i>	2
			<i>Anopheles quadrimaculatus</i>	1
Ridgepointe	6/11/2008	NJ Light Trap	<i>Aedes vexans</i>	2
Ridgepointe	6/16/2008	NJ Light Trap	<i>Anopheles quadrimaculatus</i>	1
			<i>Psorophora columbiae</i>	4
Ridgepointe	6/24/2008	NJ Light Trap	<i>Aedes vexans</i>	3

Vector Disease Control, Inc.  
 203 East Cross Street  
 DeWitt, AR 72042  
 1-800-413-4445

Trap Location	Date Trap Set	Trap Type	Mosquito Species	No. Collected
Ridgepointe	6/24/2008	NJ Light Trap	<i>Anopheles quadrimaculatus</i>	2
			<i>Psorophora columbiae</i>	2
<b>Trap Total</b>				17 (Avg. 4.2)

#### Zone 4 Collections

Partridge	6/5/2008	NJ Light Trap	<i>Aedes vexans</i>	1
Partridge	6/11/2008	NJ Light Trap	<i>Aedes vexans</i>	5
Partridge	6/16/2008	NJ Light Trap	<i>Aedes vexans</i>	3
			<i>Psorophora columbiae</i>	1
Partridge	6/24/2008	NJ Light Trap	<i>Anopheles quadrimaculatus</i>	1
			<i>Psorophora columbiae</i>	11
<b>Trap Total</b>				22 (Avg. 5.5)

#### Zone 5 Collections

Frog Pond	6/5/2008	NJ Light Trap	No Mosquitoes	0
Frog Pond	6/11/2008	NJ Light Trap	<i>Aedes vexans</i>	3
			<i>Anopheles quadrimaculatus</i>	1
Frog Pond	6/16/2008	NJ Light Trap	<i>Psorophora columbiae</i>	3
Frog Pond	6/24/2008	NJ Light Trap	<i>Aedes vexans</i>	1
			<i>Anopheles quadrimaculatus</i>	1
			<i>Psorophora columbiae</i>	21
<b>Trap Total</b>				30 (Avg. 7.5)

#### Zone 6 Collections

Oakhill	6/3/2008	NJ Light Trap	<i>Aedes vexans</i>	17
Oakhill	6/10/2008	NJ Light Trap	<i>Aedes vexans</i>	2
Oakhill	6/18/2008	NJ Light Trap	<i>Aedes vexans</i>	1
			<i>Anopheles quadrimaculatus</i>	4
Oakhill	6/23/2008	NJ Light Trap	<i>Aedes vexans</i>	3
			<i>Psorophora columbiae</i>	11
<b>Trap Total</b>				38 (Avg. 9.5)
Pleasantview	6/3/2008	NJ Light Trap	<i>Aedes vexans</i>	16
Pleasantview	6/10/2008	NJ Light Trap	<i>Aedes vexans</i>	7
Pleasantview	6/18/2008	NJ Light Trap	<i>Aedes vexans</i>	3
			<i>Culex restuans</i>	1
			<i>Psorophora columbiae</i>	1

Trap Location	Date Trap Set	Trap Type	Mosquito Species	No. Collected
Pleasantview	6/23/2008	NJ Light Trap	<i>Aedes vexans</i>	4
			<i>Anopheles quadrimaculatus</i>	1
			<i>Psorophora columbiae</i>	3
<b>Trap Total</b>				<b>36 (Avg. 9)</b>

### Zone 8 Collections

Briarcrest	6/5/2008	NJ Light Trap	<i>Aedes vexans</i>	2
Briarcrest	6/11/2008	NJ Light Trap	<i>Aedes vexans</i>	4
Briarcrest	6/16/2008	NJ Light Trap	No Mosquitoes	0
Briarcrest	6/24/2008	NJ Light Trap	<i>Aedes vexans</i>	3
			<i>Anopheles quadrimaculatus</i>	1
<b>Trap Total</b>				<b>10 (Avg. 2.5)</b>

Gerald's	6/5/2008	NJ Light Trap	No Mosquitoes	0
Gerald's	6/11/2008	NJ Light Trap	No Mosquitoes	0
Gerald's	6/16/2008	NJ Light Trap	No Mosquitoes	0
Gerald's	6/24/2008	NJ Light Trap	No Mosquitoes	0
<b>Trap Total</b>				<b>0 (Avg. 0)</b>

Jefferson	6/3/2008	NJ Light Trap	<i>Aedes vexans</i>	3
Jefferson	6/10/2008	NJ Light Trap	<i>Aedes vexans</i>	1
Jefferson	6/18/2008	NJ Light Trap	<i>Aedes vexans</i>	1
			<i>Culex restuans</i>	1
Jefferson	6/23/2008	NJ Light Trap	<i>Aedes vexans</i>	1
<b>Trap Total</b>				<b>7 (Avg. 1.8)</b>

### Zone 9 Collections

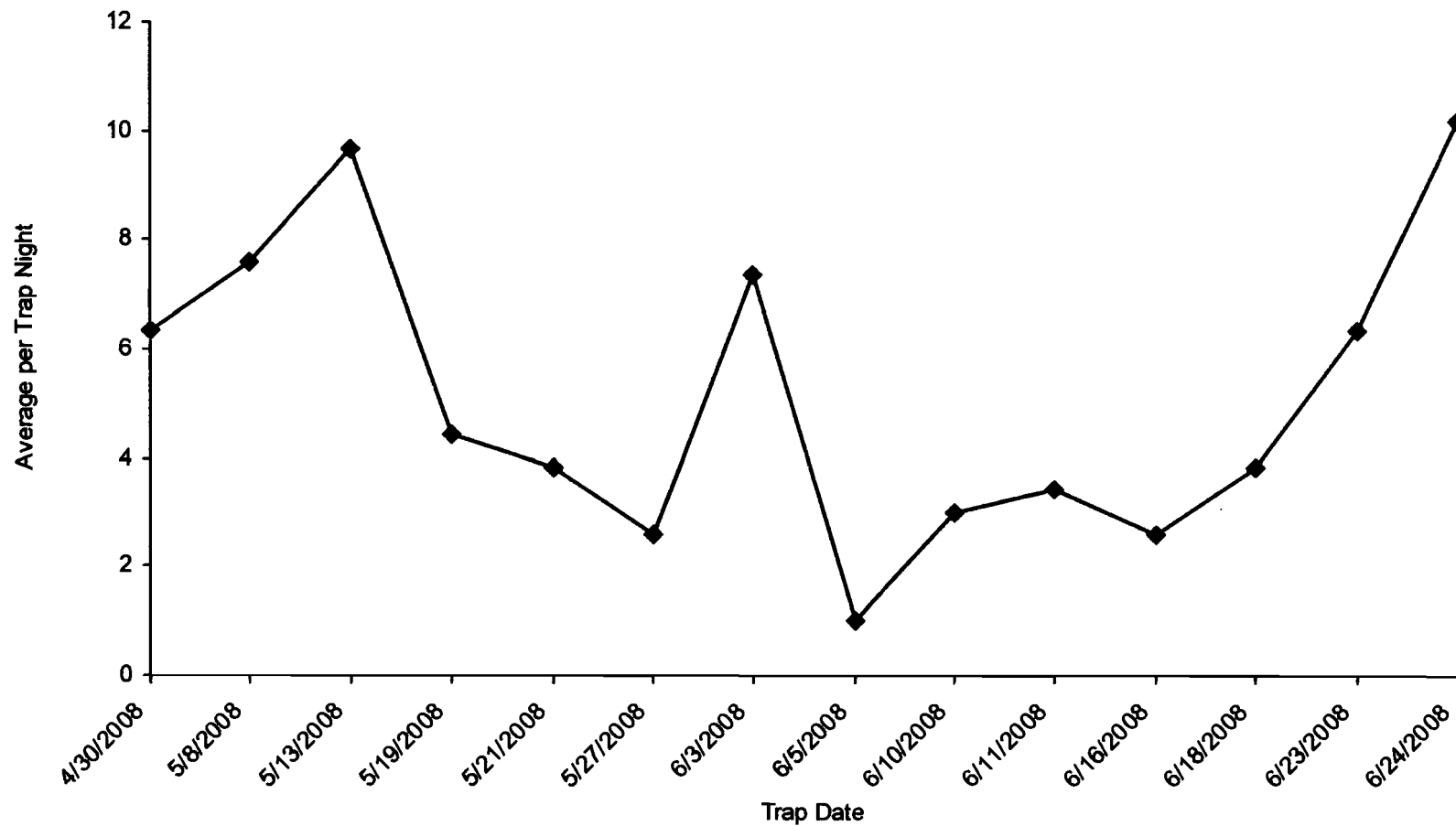
Cottag Home	6/5/2008	NJ Light Trap	<i>Aedes vexans</i>	1
Cottag Home	6/11/2008	NJ Light Trap	<i>Aedes vexans</i>	2
			<i>Anopheles quadrimaculatus</i>	2
			<i>Psorophora ferox</i>	1
Cottag Home	6/16/2008	NJ Light Trap	<i>Aedes vexans</i>	2
			<i>Anopheles quadrimaculatus</i>	1
			<i>Psorophora columbiae</i>	1
Cottag Home	6/24/2008	NJ Light Trap	<i>Anopheles quadrimaculatus</i>	3
			<i>Psorophora columbiae</i>	4
<b>Trap Total</b>				<b>17 (Avg. 4.2)</b>

Trap Location	Date Trap Set	Trap Type	Mosquito Species	No. Collected
<b>Zone 10 Collections</b>				
Ashwood	6/5/2008	NJ Light Trap	<i>No Mosquitoes</i>	0
Ashwood	6/11/2008	NJ Light Trap	<i>Aedes vexans</i>	4
Ashwood	6/16/2008	NJ Light Trap	<i>Aedes vexans</i>	2
Ashwood	6/24/2008	NJ Light Trap	<i>Aedes vexans</i>	10
			<i>Anopheles quadrimaculatus</i>	3
			<i>Psorophora columbiae</i>	5
<b>Trap Total</b>				<b>24 (Avg. 6)</b>
<b>Overall Trap Total</b>				<b>243</b>
<b>Overall Trap Average</b>				<b>4.7</b>

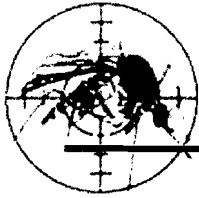


# Adult Mosquito Surveillance Summary

Jonesboro







# Larvicide Applications

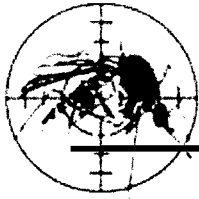
Start Date: 6/1/2008

End Date: 6/30/2008

Jonesboro

Date	Location	Habitat	No. of Larvae	Larvicide	Amount Applied (oz.)
<b>Zone 3 Applications</b>					
6/26/2008	Bloom Meadows	ditch	1-10	Altosid XR (2724-421)	1.00
	Strawfloor	ditch	1-10	Altosid XR (2724-421)	1.00
<i>Total Ounces Applied:</i>					2.00
6/26/2008	Duckwater/Bloom Meadows	ditch	1-10	Aquabac 400G	16.00
<i>Total Ounces Applied:</i>					16.00
<i>Total Larvicide Applied in Zone 3:</i>					18.00
<b>Zone 4 Applications</b>					
6/16/2008	Crestfield	ditch	1-10	Altosid XR (2724-421)	1.00
<i>Total Ounces Applied:</i>					1.00
6/27/2008	Southlawn	ditch	1-10	Aquabac 400G	8.00
<i>Total Ounces Applied:</i>					8.00
<i>Total Larvicide Applied in Zone 4:</i>					9.00
<b>Zone 5 Applications</b>					
6/19/2008	Frog Pond Rd.	ditch	1-10	Aquabac 400G	8.00
<i>Total Ounces Applied:</i>					8.00
<i>Total Larvicide Applied in Zone 5:</i>					8.00
<b>Zone 6 Applications</b>					
6/2/2008	Thomas Green	ditch	11-50	Aquabac 400G	8.00
<i>Total Ounces Applied:</i>					8.00
<i>Total Larvicide Applied in Zone 6:</i>					8.00
<b>Zone 8 Applications</b>					
6/26/2008	Gerald's	ditch	1-10	Altosid XR (2724-421)	1.00
	Ivy Green/Wilkins	ditch	1-10	Altosid XR (2724-421)	1.00
<i>Total Ounces Applied:</i>					2.00

Date	Location	Habitat	No. of Larvae	Larvicide	Amount Applied (oz.)
6/11/2008	AR St. Police	ditch	1-10	Aquabac 400G	8.00
	Burk	ditch	1-10	Aquabac 400G	8.00
6/26/2008	Arrowhead Rd.	ditch	1-10	Aquabac 400G	8.00
	Ivy Green/Wilkins	ditch	1-10	Aquabac 400G	16.00
	Stonebridge	ditch	1-10	Aquabac 400G	4.00
<i>Total Ounces Applied:</i>					<i>44.00</i>
<i>Total Larvicide Applied in Zone 8:</i>					<i>46.00</i>
<b>Zone 10 Applications</b>					
6/16/2008	Joe Mack	ditch	1-10	Altosid XR (2724-421)	1.00
<i>Total Ounces Applied:</i>					<i>1.00</i>
6/16/2008	On Target	ditch	1-10	Aquabac 400G	16.00
6/26/2008	Flemon/Friendly Hope Rd.	ditch	1-10	Aquabac 400G	24.00
	Shasta Dr.	ditch	1-10	Aquabac 400G	16.00
<i>Total Ounces Applied:</i>					<i>56.00</i>
<i>Total Larvicide Applied in Zone 10:</i>					<i>57.00</i>
<b>Zone 11 Applications</b>					
6/4/2008	Cain St.	ditch	1-10	Aquabac 400G	16.00
	Crawford Trailer Park	ditch	1-10	Aquabac 400G	16.00
	E. Highland	ditch	1-10	Aquabac 400G	16.00
	Mary Jane	ditch	1-10	Aquabac 400G	16.00
	Meador	ditch	1-10	Aquabac 400G	16.00
	Nelms St.	ditch	1-10	Aquabac 400G	16.00
6/19/2008	Cain St.	ditch	1-10	Aquabac 400G	8.00
	Sally	ditch	1-10	Aquabac 400G	8.00
<i>Total Ounces Applied:</i>					<i>112.00</i>
<i>Total Larvicide Applied in Zone 11:</i>					<i>112.00</i>
<i>Overall Total Ounces Applied</i>					<i>258.00</i>



# Service Request Adulticide Applications

Start Date: 6/1/2008

End Date: 6/30/2008

Jonesboro

Date	Location	Chemical	Mix Ratio	Ounces Sprayed
<b>Zone 2 Adulticide Applications</b>				
6/13/2008	1301 Dupwe	Permanone 30-30 (432-1235)	1:4.5	16.0
<i>Total Permanone 30-30 (432-1235) Applied:</i>				16.0 (0.1 gals)
6/16/2008	1824 Rosemond	Scourge RTU	Neat	8.0
6/24/2008	1824 Rosemond	Scourge RTU	Neat	16.0
<i>Total Scourge RTU Applied:</i>				24.0 (0.2 gals)
<b>Zone 3 Adulticide Applications</b>				
6/27/2008	3821 Pebble Beach Dr.	Permanone 30-30 (432-1235)	1:4.5	32.0
<i>Total Permanone 30-30 (432-1235) Applied:</i>				32.0 (0.3 gals)
6/13/2008	2605 Ridgepointe	Scourge RTU	Neat	8.0
6/30/2008	3821 Pebble Beach Dr.	Scourge RTU	Neat	16.0
<i>Total Scourge RTU Applied:</i>				24.0 (0.2 gals)
<b>Zone 4 Adulticide Applications</b>				
6/27/2008	107 E. Lawson Rd.	Permanone 30-30 (432-1235)	1:4.5	36.0
6/30/2008	931 Craighead Forest Rd.	Permanone 30-30 (432-1235)	1:4.5	32.0
<i>Total Permanone 30-30 (432-1235) Applied:</i>				68.0 (0.5 gals)
6/27/2008	6304 SW Dr.	Scourge RTU	Neat	8.0
6/30/2008	502 Candis	Scourge RTU	Neat	16.0
<i>Total Scourge RTU Applied:</i>				24.0 (0.2 gals)
<b>Zone 5 Adulticide Applications</b>				
6/16/2008	2002 Sandbrook	Permanone 30-30 (432-1235)	1:4.5	12.0
6/30/2008	5408 Stadium	Permanone 30-30 (432-1235)	1:4.5	24.0
<i>Total Permanone 30-30 (432-1235) Applied:</i>				36.0 (0.3 gals)
<b>Zone 7 Adulticide Applications</b>				
6/3/2008	Jonathan Dr.	Permanone 30-30 (432-1235)	1:4.5	36.0
<i>Total Permanone 30-30 (432-1235) Applied:</i>				36.0 (0.3 gals)
<b>Zone 8 Adulticide Applications</b>				

Vector Disease Control, Inc.  
203 East Cross Street  
DeWitt, AR 72042  
1-800-413-4445

Date	Location	Chemical	Mix Ratio	Ounces Sprayed
6/27/2008	1000 Marjorie	Permanone 30-30 (432-1235)	1:4.5	42.0
<b>Total Permanone 30-30 (432-1235) Applied:</b>				42.0 (0.3 gals)
6/9/2008	807 E. Lakeshore	Scourge RTU	Neat	8.0
6/24/2008	1415 Hidden Cove	Scourge RTU	Neat	16.0
<b>Total Scourge RTU Applied:</b>				24.0 (0.2 gals)
<b>Zone 9 Adulticide Applications</b>				
6/5/2008	2208 Commerce	Permanone 30-30 (432-1235)	1:4.5	24.0
6/9/2008	4304 E. Highland	Permanone 30-30 (432-1235)	1:4.5	18.0
6/27/2008	2208 Commerce	Permanone 30-30 (432-1235)	1:4.5	32.0
<b>Total Permanone 30-30 (432-1235) Applied:</b>				74.0 (0.6 gals)
<b>Zone 10 Adulticide Applications</b>				
6/5/2008	3500 Big Creek Cove	Permanone 30-30 (432-1235)	1:4.5	36.0
6/27/2008	5312 Wilkerson	Permanone 30-30 (432-1235)	1:4.5	32.0
6/27/2008	3512 Flemon	Permanone 30-30 (432-1235)	1:4.5	28.0
6/27/2008	4123 Friendly Hope Rd	Permanone 30-30 (432-1235)	1:4.5	28.0
6/27/2008	3506 Quail Ridge	Permanone 30-30 (432-1235)	1:4.5	25.0
6/27/2008	1921 Carolyn	Permanone 30-30 (432-1235)	1:4.5	24.0
6/30/2008	3626 Flemon Rd.	Permanone 30-30 (432-1235)	1:4.5	32.0
<b>Total Permanone 30-30 (432-1235) Applied:</b>				205.0 (1.6 gals)
<b>Zone 11 Adulticide Applications</b>				
6/27/2008	2205 Sutton	Permanone 30-30 (432-1235)	1:4.5	32.0
<b>Total Permanone 30-30 (432-1235) Applied:</b>				32.0 (0.3 gals)
<b>Grand Totals</b>				637.0 (5.0 gals)



## Ground Adulticide Applications

Start Date: 6/1/2008      End Date: 6/30/2008

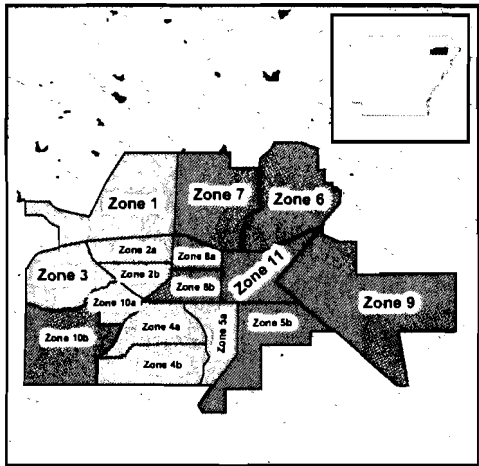
Jonesboro

Month	Date	Municipality	Chemical	Mix Ratio	Trip Miles	Spray Miles	Spray Acres	Gallons Sprayed
<b>Zone Adulticide Applications</b>								
June 2008	6/5/2008		Permanone 30-30 (432-1235)	1:12	0.0	28.0	1018.0	4.0
<i>Total Permanone 30-30 (432-1235) Applied:</i>								4.0
<b>Zone Totals:</b>					<b>0.0</b>	<b>28.0</b>	<b>1,018.0</b>	<b>4.0</b>
<b>Zone 1 Adulticide Applications</b>								
June 2008	6/18/2008		Permanone 30-30 (432-1235)	1:4.5	0.0	52.0	1891.0	10.0
<i>Total Permanone 30-30 (432-1235) Applied:</i>								10.0
<b>Zone 1 Totals:</b>					<b>0.0</b>	<b>52.0</b>	<b>1,891.0</b>	<b>10.0</b>
<b>Zone 2 Adulticide Applications</b>								
June 2008	6/16/2008		Permanone 30-30 (432-1235)	1:12	0.0	39.0	1418.0	10.0
<i>Total Permanone 30-30 (432-1235) Applied:</i>								10.0
<b>Zone 2 Totals:</b>					<b>0.0</b>	<b>39.0</b>	<b>1,418.0</b>	<b>10.0</b>
<b>Zone 3 Adulticide Applications</b>								
June 2008	6/6/2008		Permanone 30-30 (432-1235)	1:12	0.0	58.0	2109.0	10.0
	6/18/2008		Permanone 30-30 (432-1235)	1:4.5	0.0	52.0	1891.0	6.0
	6/26/2008		Permanone 30-30 (432-1235)	1:4.5	0.0	51.0	1855.0	6.0
<i>Total Permanone 30-30 (432-1235) Applied:</i>								22.0

Vector Disease Control, Inc.  
203 East Cross Street  
DeWitt, AR 72042  
1-800-413-4445

Month	Date	Municipality	Chemical	Mix Ratio	Trip Miles	Spray Miles	Spray Acres	Gallons Sprayed	
					<b>Zone 3 Totals:</b>	<b>0.0</b>	<b>161.0</b>	<b>5,855.0</b>	<b>22.0</b>
<b>Zone 4 Adulticide Applications</b>									
June 2008	6/13/2008		Permanone 30-30 (432-1235)	1:12	0.0	39.0	1418.0	7.0	
	6/20/2008	a	Permanone 30-30 (432-1235)	1:4.5	0.0	59.0	2145.0	9.0	
	6/25/2008	a	Permanone 30-30 (432-1235)	1:4.5	0.0	53.0	1927.0	9.0	
	6/27/2008	b	Permanone 30-30 (432-1235)	1:4.5	0.0	43.0	1564.0	6.0	
	6/30/2008		Permanone 30-30 (432-1235)	1:4.5	0.0	39.0	1418.0	10.0	
					<i>Total Permanone 30-30 (432-1235) Applied:</i>				<b>41.0</b>
					<b>Zone 4 Totals:</b>	<b>0.0</b>	<b>233.0</b>	<b>8,472.0</b>	<b>41.0</b>
<b>Zone 5 Adulticide Applications</b>									
June 2008	6/16/2008		Permanone 30-30 (432-1235)	1:12	0.0	38.0	1382.0	10.0	
	6/25/2008	b	Permanone 30-30 (432-1235)	1:4.5	0.0	59.0	2145.0	9.0	
	6/30/2008		Permanone 30-30 (432-1235)	1:4.5	0.0	53.0	1927.0	9.0	
					<i>Total Permanone 30-30 (432-1235) Applied:</i>				<b>28.0</b>
					<b>Zone 5 Totals:</b>	<b>0.0</b>	<b>150.0</b>	<b>5,454.0</b>	<b>28.0</b>
<b>Zone 6 Adulticide Applications</b>									
June 2008	6/6/2008		Permanone 30-30 (432-1235)	1:12	0.0	42.0	1527.0	10.0	
	6/20/2008		Permanone 30-30 (432-1235)	1:4.5	0.0	40.0	1455.0	12.0	
	6/26/2008		Permanone 30-30 (432-1235)	1:4.5	0.0	0.0	0.0	8.0	
					<i>Total Permanone 30-30 (432-1235) Applied:</i>				<b>30.0</b>
					<b>Zone 6 Totals:</b>	<b>0.0</b>	<b>82.0</b>	<b>2,982.0</b>	<b>30.0</b>
<b>Zone 8 Adulticide Applications</b>									

Month	Date	Municipality	Chemical	Mix Ratio	Trip Miles	Spray Miles	Spray Acres	Gallons Sprayed	
June 2008	6/27/2008	b	Permanone 30-30 (432-1235)	1:4.5	0.0	42.0	1527.0	9.0	
								<i>Total Permanone 30-30 (432-1235) Applied:</i>	9.0
					<b>Zone 8 Totals:</b>	<b>0.0</b>	<b>42.0</b>	<b>1,527.0</b>	<b>9.0</b>
<b>Zone 10 Adulticide Applications</b>									
June 2008	6/25/2008	a	Permanone 30-30 (432-1235)	1:4.5	0.0	44.0	1600.0	9.0	
	6/30/2008		Permanone 30-30 (432-1235)	1:4.5	0.0	49.0	1782.0	5.0	
								<i>Total Permanone 30-30 (432-1235) Applied:</i>	14.0
					<b>Zone 10 Totals:</b>	<b>0.0</b>	<b>93.0</b>	<b>3,382.0</b>	<b>14.0</b>
<b>Zone 11 Adulticide Applications</b>									
June 2008	6/27/2008	9 & 11	Permanone 30-30 (432-1235)	1:4.5	0.0	28.0	1018.0	6.0	
								<i>Total Permanone 30-30 (432-1235) Applied:</i>	6.0
					<b>Zone 11 Totals:</b>	<b>0.0</b>	<b>28.0</b>	<b>1,018.0</b>	<b>6.0</b>
<b>Zone 911 Adulticide Applications</b>									
June 2008	6/13/2008		Permanone 30-30 (432-1235)	1:12	0.0	29.0	1055.0	7.0	
								<i>Total Permanone 30-30 (432-1235) Applied:</i>	7.0
					<b>Zone 911 Totals:</b>	<b>0.0</b>	<b>29.0</b>	<b>1,055.0</b>	<b>7.0</b>
					<b>Grand Totals:</b>	<b>0.0</b>	<b>937.0</b>	<b>34,072.0</b>	<b>181.0</b>



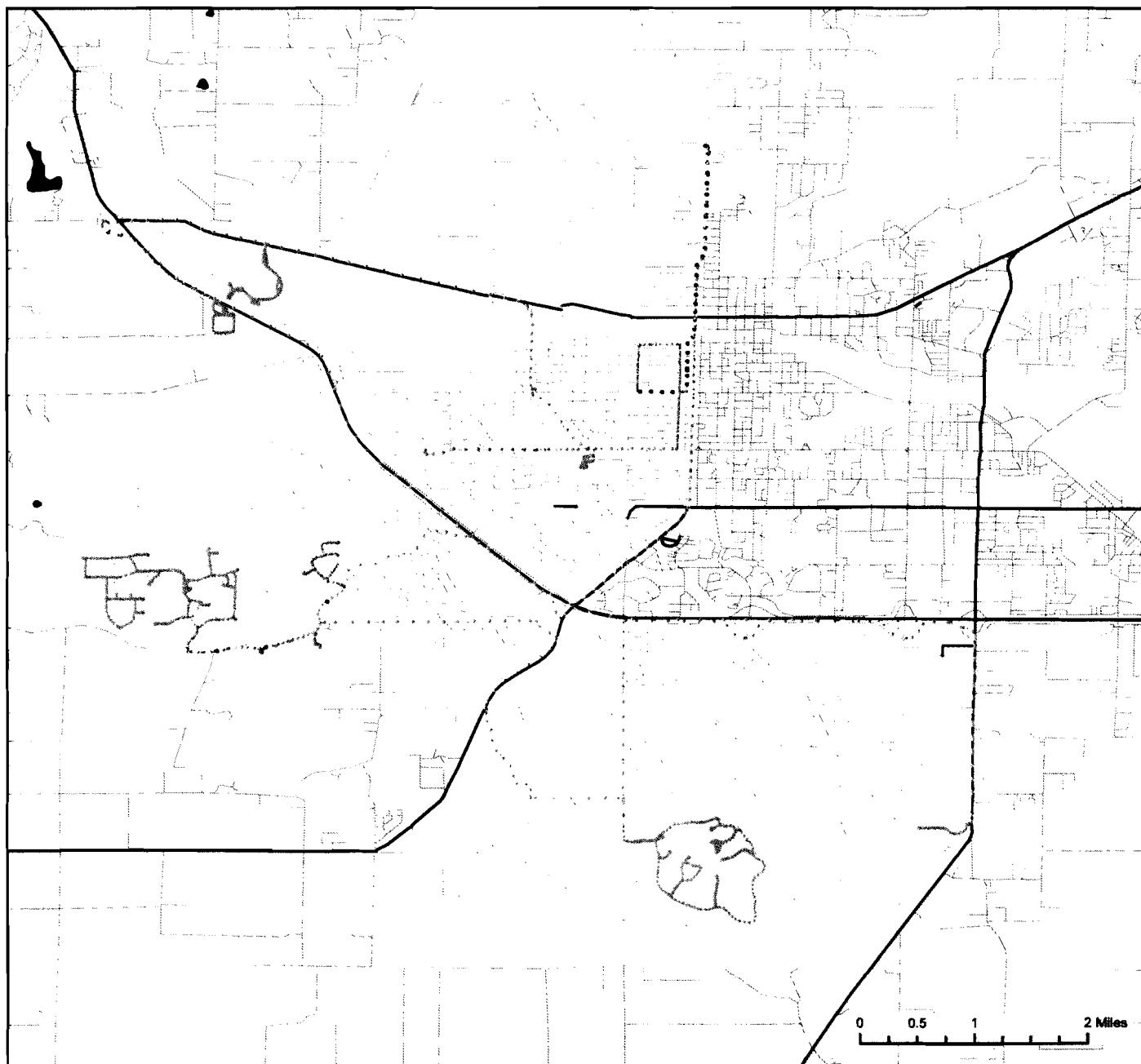
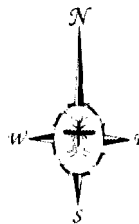
# The City of Jonesboro, Arkansas

## Ground Adulticide Application Date: June 6, 2008

### Sprayer Status

- Spray Off
- Spray On

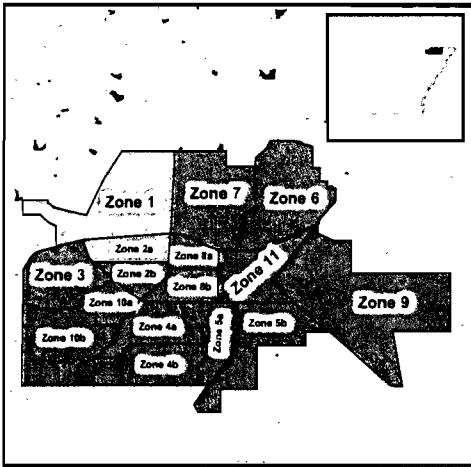
Chemical: Permanone 30-30  
 Quantity Used: 10.4 gal  
 Miles Treated: 25.0  
 Acres Treated: 907.0



Vector Disease Control, Inc.  
 PO Box 566  
 DeWitt, AR 72042

These map products were developed for use by VDCI for its internal purposes only and were not designed or intended for general use by members of the public. VDCI makes no representation or warranty as to its accuracy, timeliness, or completeness, and in particular, its accuracy in labeling or displaying dimensions, contours, property boundaries, or placement or location of any map features thereon. © 2008 VDCI. All rights reserved.





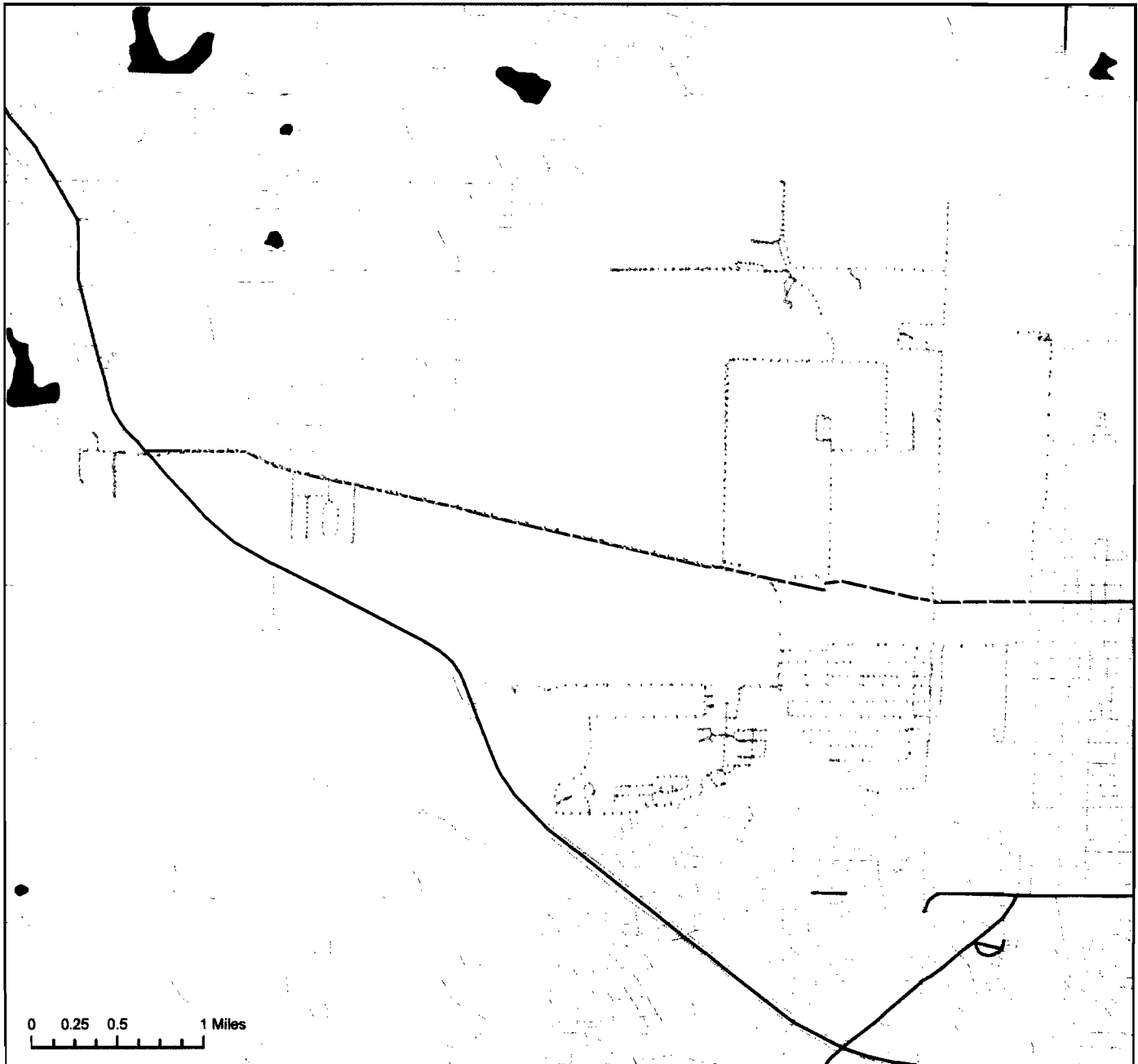
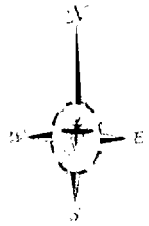
# The City of Jonesboro, Arkansas

Ground Adulticide Application Date:  
June 18, 2008

## Sprayer Status

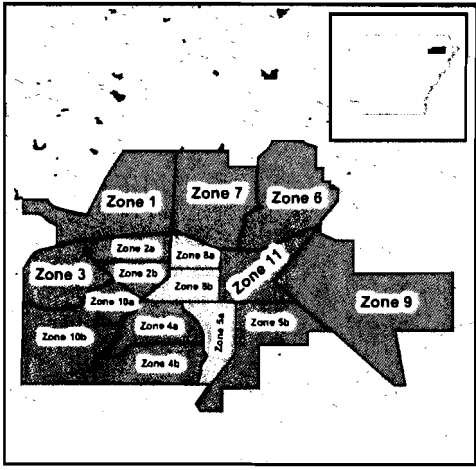
- Spray Off
- Spray On

Chemical: Permanone 30-30  
Quantity Used: 10.8 gal  
Miles Treated: 37.3  
Acres Treated: 1,353.0



Vector Disease Control, Inc.  
PO Box 566  
DeWitt, AR 72042

These map products were developed for use by VDCI for its internal purposes only and were not designed or intended for general use by members of the public. VDCI makes no representation or warranty as to its accuracy, timeliness, or completeness, and in particular its accuracy in labeling or displaying dimensions, contours, property boundaries, or placement or location of any map features thereon. © 2008 VDCI. All rights reserved.



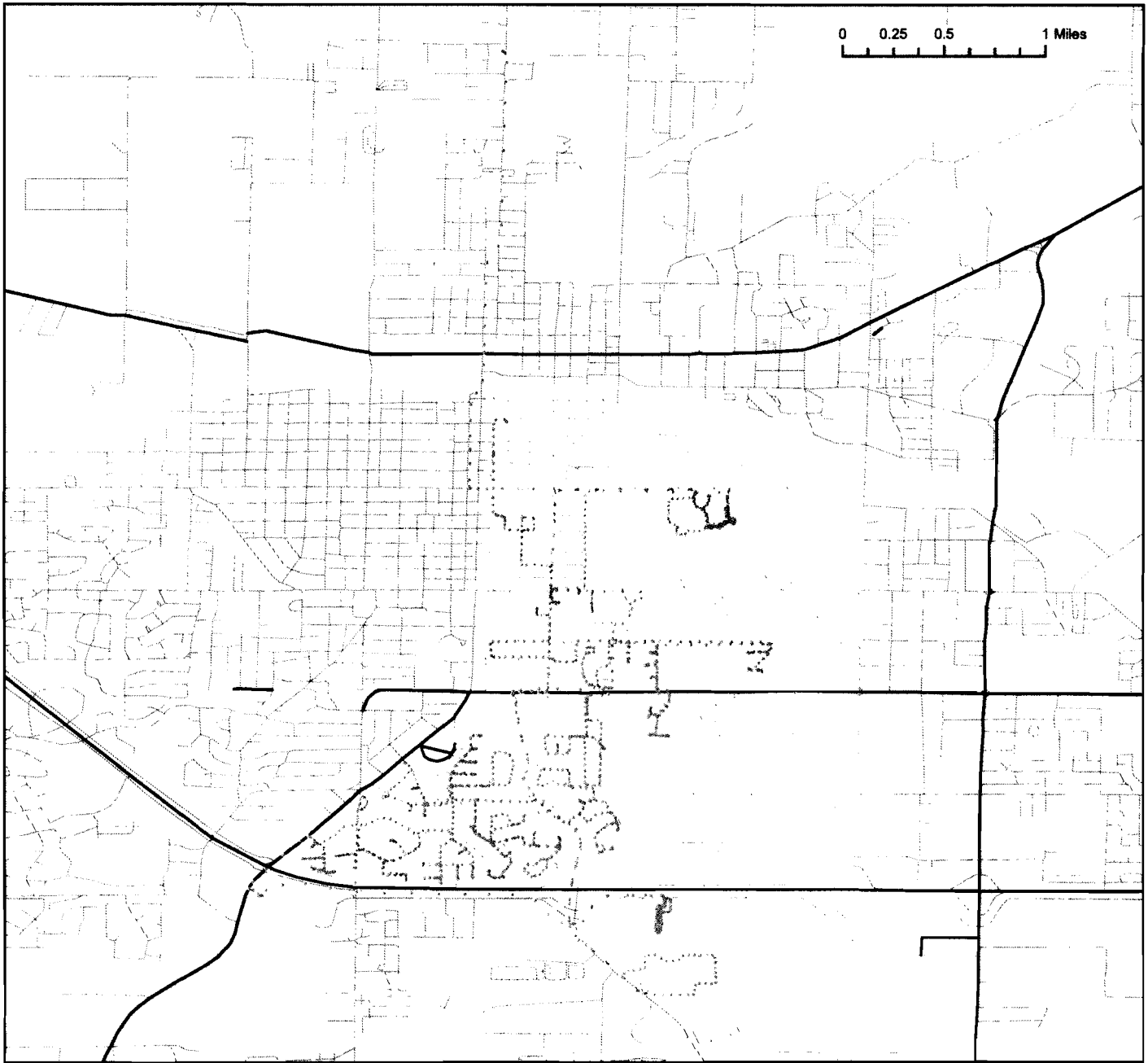
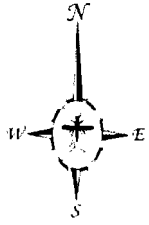
# The City of Jonesboro, Arkansas

Ground Adulticide Application Date:  
June 27, 2008

**Sprayer Status**

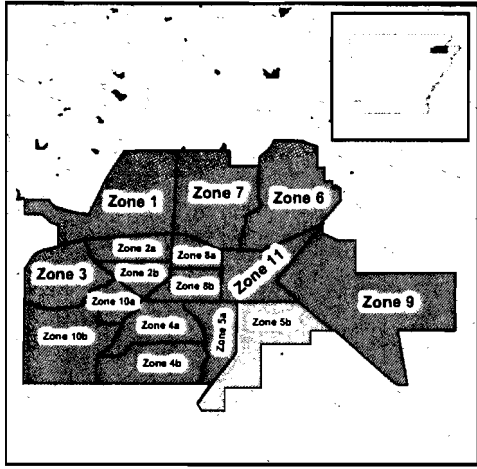
- Spray Off
- Spray On

Chemical: Permanone 30-30  
Quantity Used: 10.0 gal  
Miles Treated: 26.7  
Acres Treated: 969.0



Vector Disease Control, Inc.  
PO Box 566  
DeWitt, AR 72042

These map products were developed for use by VDCI for its internal purposes only and were not designed or intended for general use by members of the public. VDCI makes no representation or warranty as to its accuracy, timeliness, or completeness, and in particular its accuracy in labeling or displaying dimensions, contours, property boundaries, or placement or location of any map features thereon. © 2008 VDCI. All rights reserved.



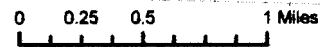
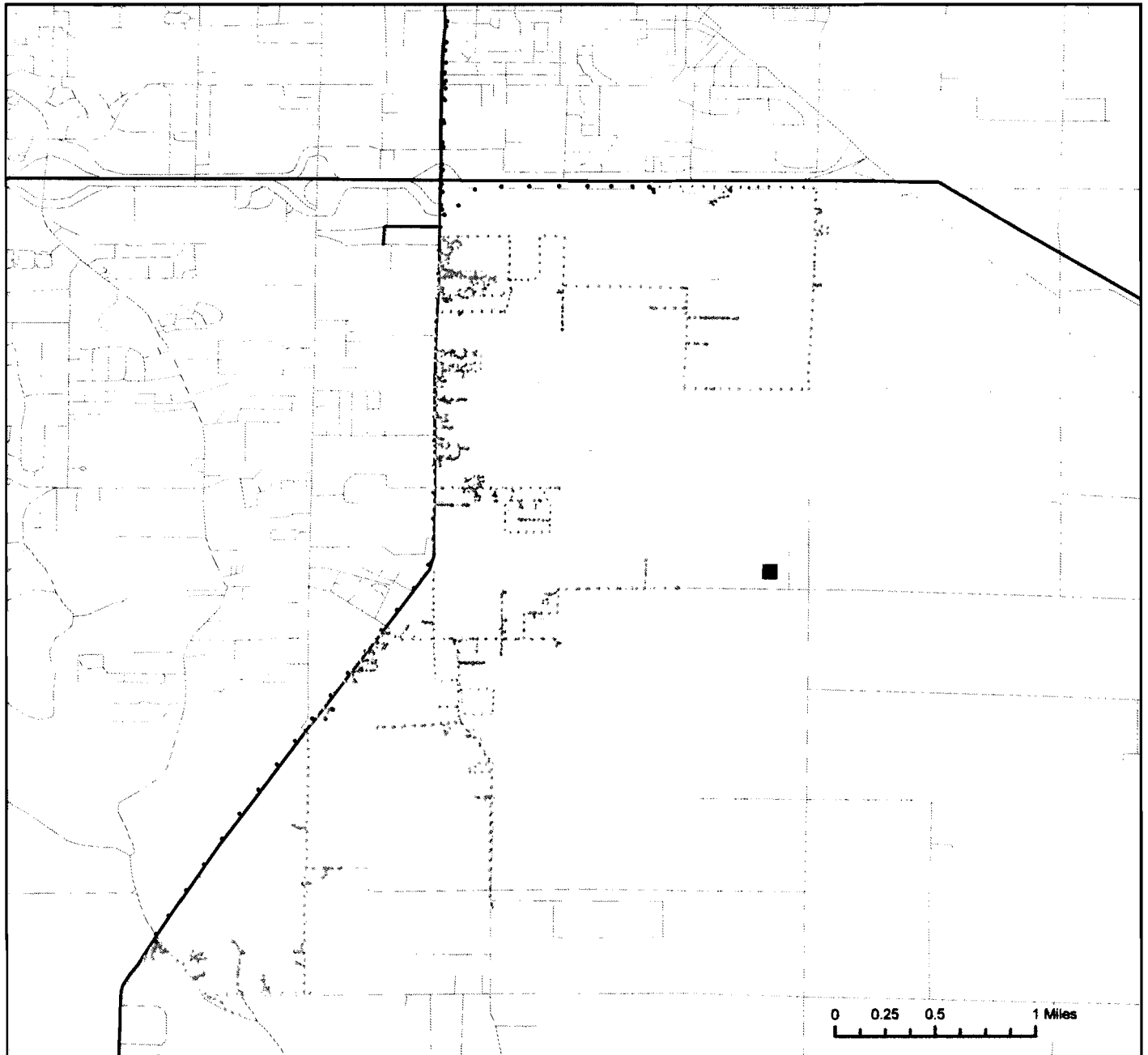
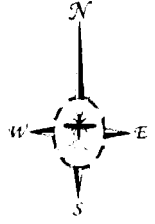
# The City of Jonesboro, Arkansas

Ground Adulticide Application Date:  
June 30, 2008

**Sprayer Status**

- Spray Off
- Spray On

Chemical: Permanone 30-30  
Quantity Used: 5.7 gal  
Miles Treated: 18.9  
Acres Treated: 685.0



Vector Disease Control, Inc.  
PO Box 566  
DeWitt, AR 72042

These map products were developed for use by VDCI for its internal purposes only and were not designed or intended for general use by members of the public. VDCI makes no representation or warranty as to its accuracy, timeliness, or completeness, and in particular, its accuracy in labeling or displaying dimensions, contours, property boundaries, or placement or location of any map features thereon. © 2008 VDCI. All rights reserved.