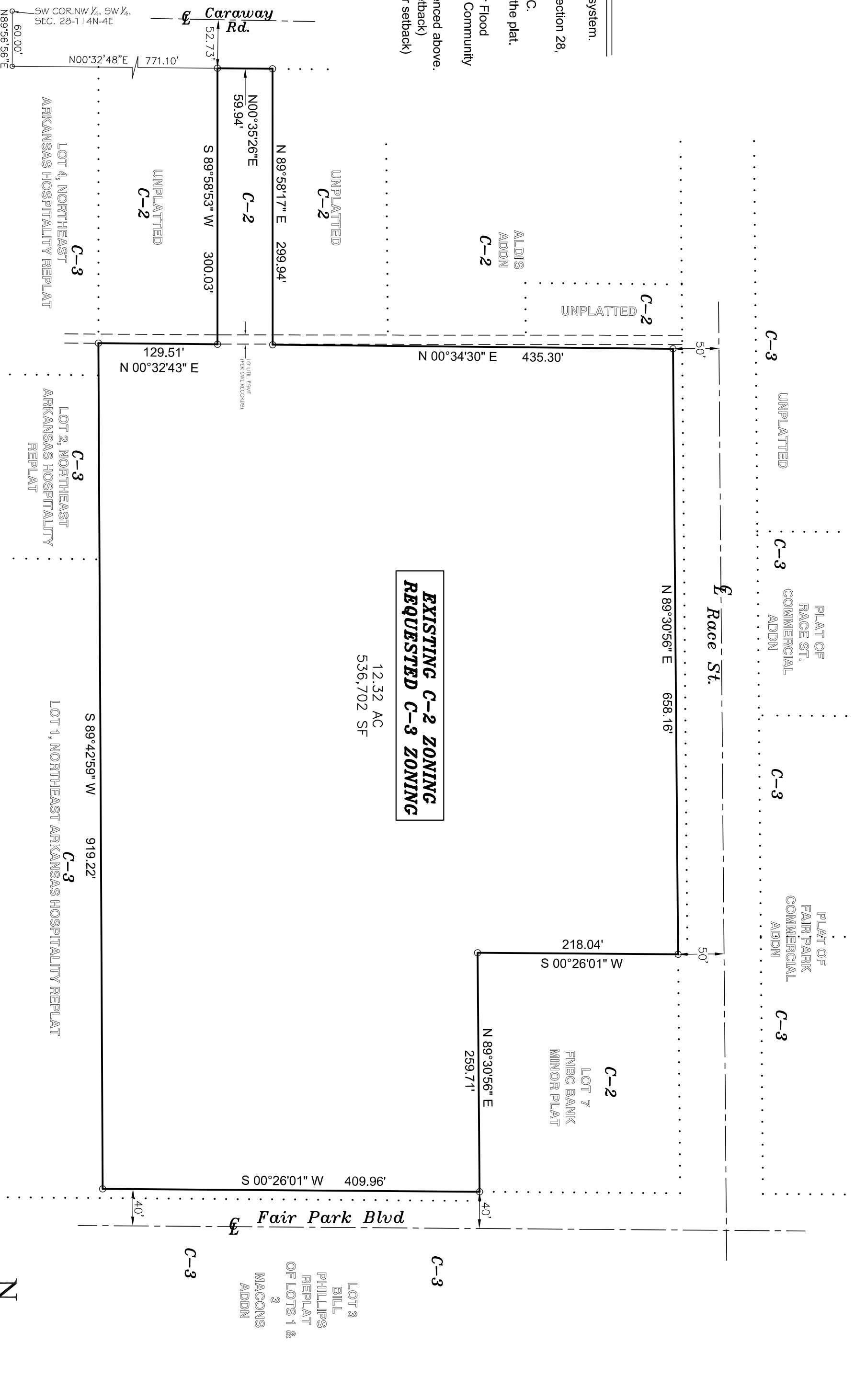


**NOTES:**

- 1) All bearings are based on Arkansas North State Plane Coordinate system.
- 2) The research completed for this survey includes:  
ALTA/GCSM Land Title Survey portion of NW 1/4 of the SW 1/4 of section 28, T14N, R4E, Jonesboro, Ark.  
dated 11-27-12 prepared by Associated Engineering & Testing, LLC.
- 3) All corner monuments set are 1/2" rebar, unless otherwise noted on the plat.
- 4) Owner: Fair Park Crossing, LLC
- 5) Flood Plain: This tract does not lie within the 100-yr Flood Plain per Flood Insurance rate map of Craighead Co., AR, and incorporated areas; Community Panel No. 05031C0132 C, dated 09-27-91 (revised 06-25-07).
- 6) Current Zoning: C-2 (25' front setback; 10' side setback; 20' rear setback)
- Requested Zoning: C-3 (25' front setback; 10' side setback; 20' rear setback)

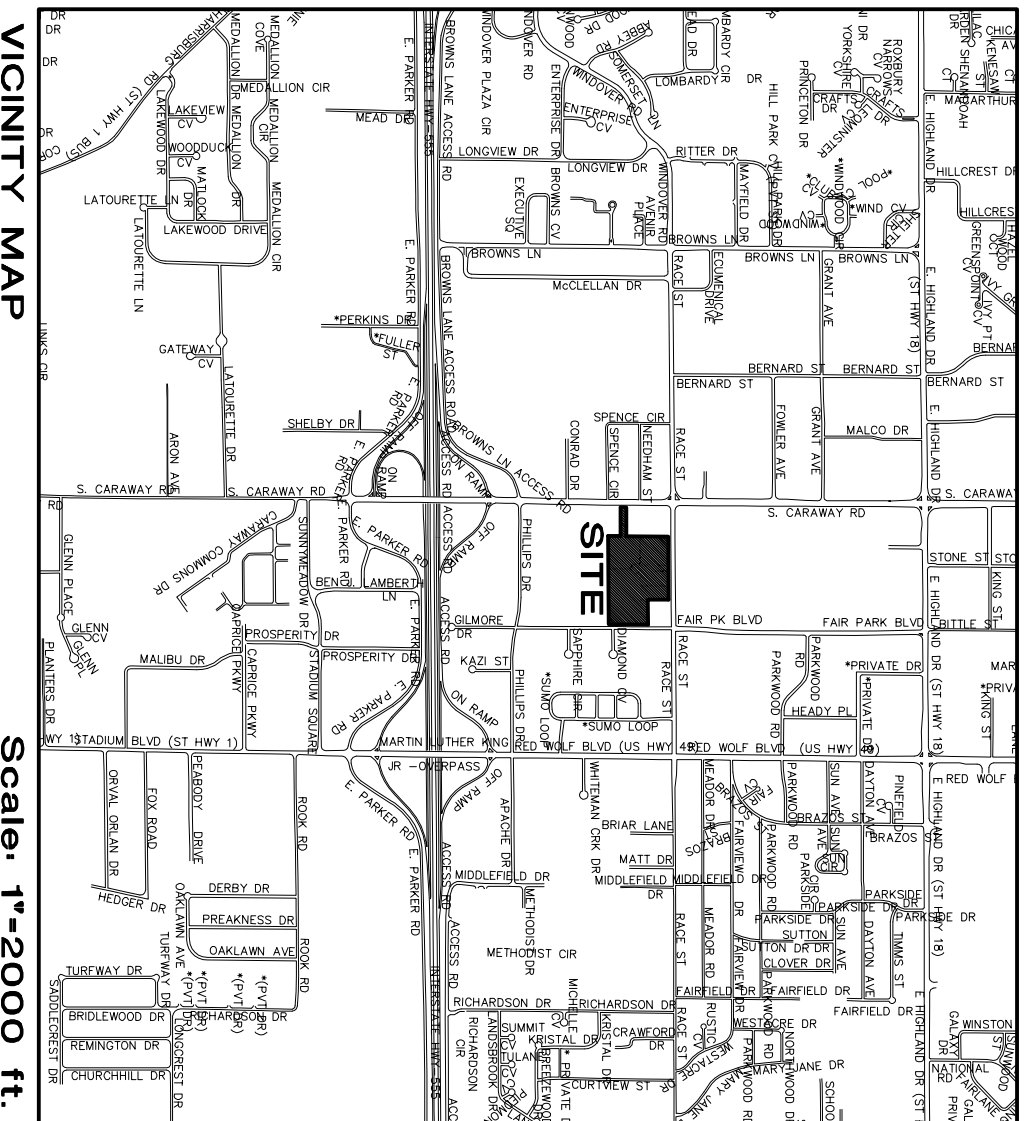
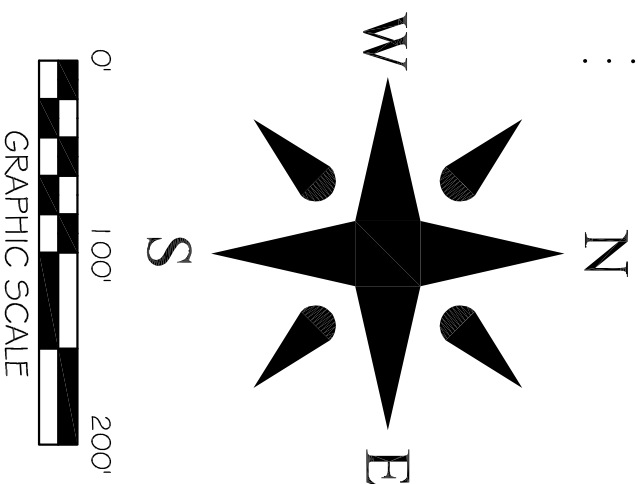


**LEGAL DESCRIPTION:**

A part of the Northwest Quarter of the Southwest Quarter of Section 28, Township 14, North, Range 4 East, Craighead County, Arkansas being more particularly described as follows:  
From the Southwest corner of said Northwest Quarter of the Southwest Quarter, run N89°58'56"E a distance of 60.00 ft. to a point;  
thence N00°32'48"E a distance of 771.10 ft. to the POINT OF BEGINNING;  
thence N00°34'30"E a distance of 435.30 ft. to a point;  
thence N89°58'17"E a distance of 299.94 ft. to a point;  
thence N89°30'56"E a distance of 658.16 ft. to a point;  
thence S00°26'01"W a distance of 218.04 ft. to a point;  
thence S00°26'01"W a distance of 409.96 ft. to a point;  
thence S89°42'59"W a distance of 919.22 ft. to a point;  
thence N00°32'43"E a distance of 129.51 ft. to a point;  
thence S89°58'53"W a distance of 300.03 ft. to the point of beginning, containing 12.32 acres, and being subject to all easements of record.

**CERTIFICATE OF SURVEY:**

To all parties interested in Title to these premises: I hereby certify that I have prior to this day made a survey of the above described property as shown on the Plat of Survey hereon. The property lines and corner monuments, to the best of my knowledge and ability, are correctly established; the improvements are as shown on the Plat of Survey. Encroachments, if any, as disclosed by Survey, are shown hereon.



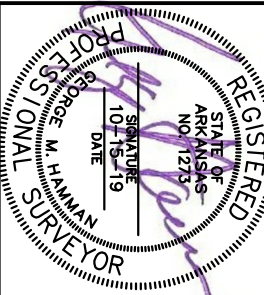
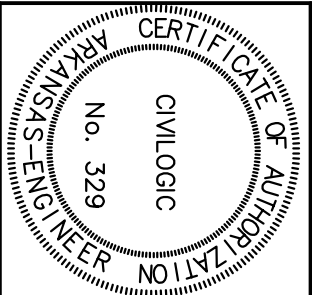
Drawn By: RE		Checked by: GH	
Date	Scale	Job No.	Sheet No.
10-15-19	1"=100'	118111	1 of 1
Section	Township	Range	County
28	14N	04E	CRAIGHEAD
ONLY COPIES WITH VIOLET COLORED SIGNATURE ARE ORIGINAL CIVILOGIC COPIES			
© 2019, Civilogic			

ENGINEERS PLANNERS SURVEYORS

**Civilogic**

203 Southwest Dr. - Jonesboro, AR - (870)932-7880 - www.civilogic.net

**REZONING PLAT**  
PT. NW 1/4, SW 1/4, 28-14N-4E  
FOR  
FAIR PARK CROSSING, LLC  
JONESBORO, ARKANSAS



JOB NO.: 118111  
SHEET NUMBER  
1 of 1