

PD-C PRELIMINARY DEVELOPMENT PLAN

A PART OF THE NORTHEAST QUARTER OF SECTION 28, TOWNSHIP 14 NORTH, RANGE 4 EAST, JONESBORO, CRAIGHEAD COUNTY, ARKANSAS



MICHAEL A. DANIELS - SURVEYOR
ARKANSAS - 1563



Haywood, Kenward, Bare, and Associates, Inc
ARKANSAS - 234

CLIENT:
G & P DEVELOPMENT

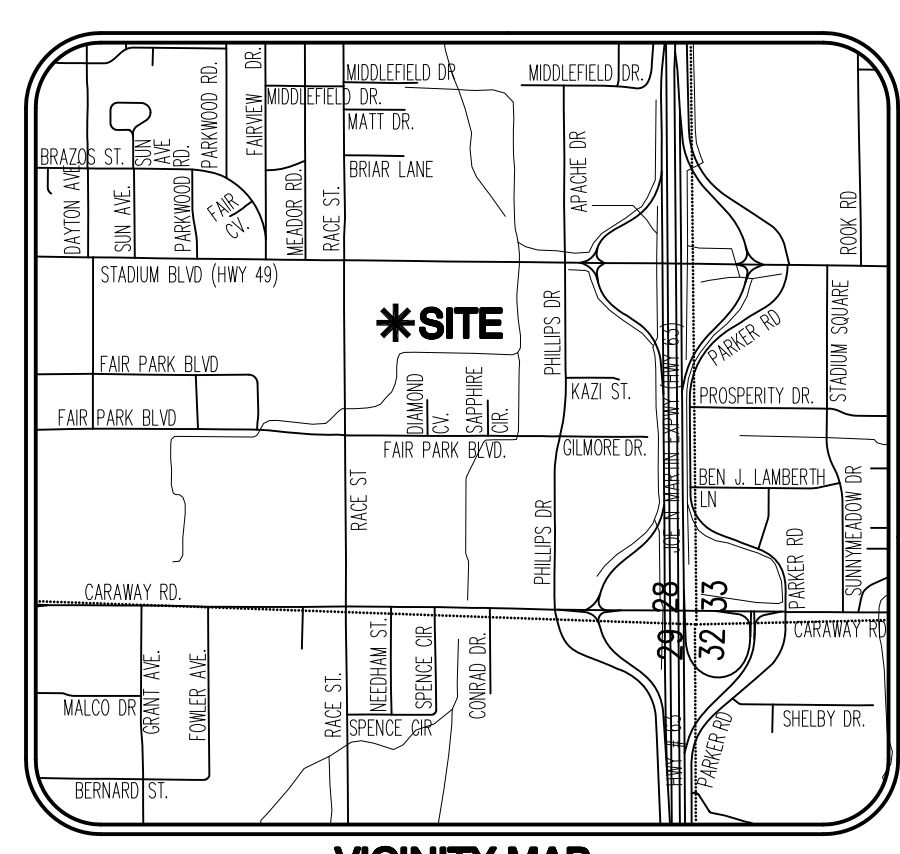
REVISIONS

DATE	BY	DESCRIPTION

PROJECT NO.
G022-0001-08

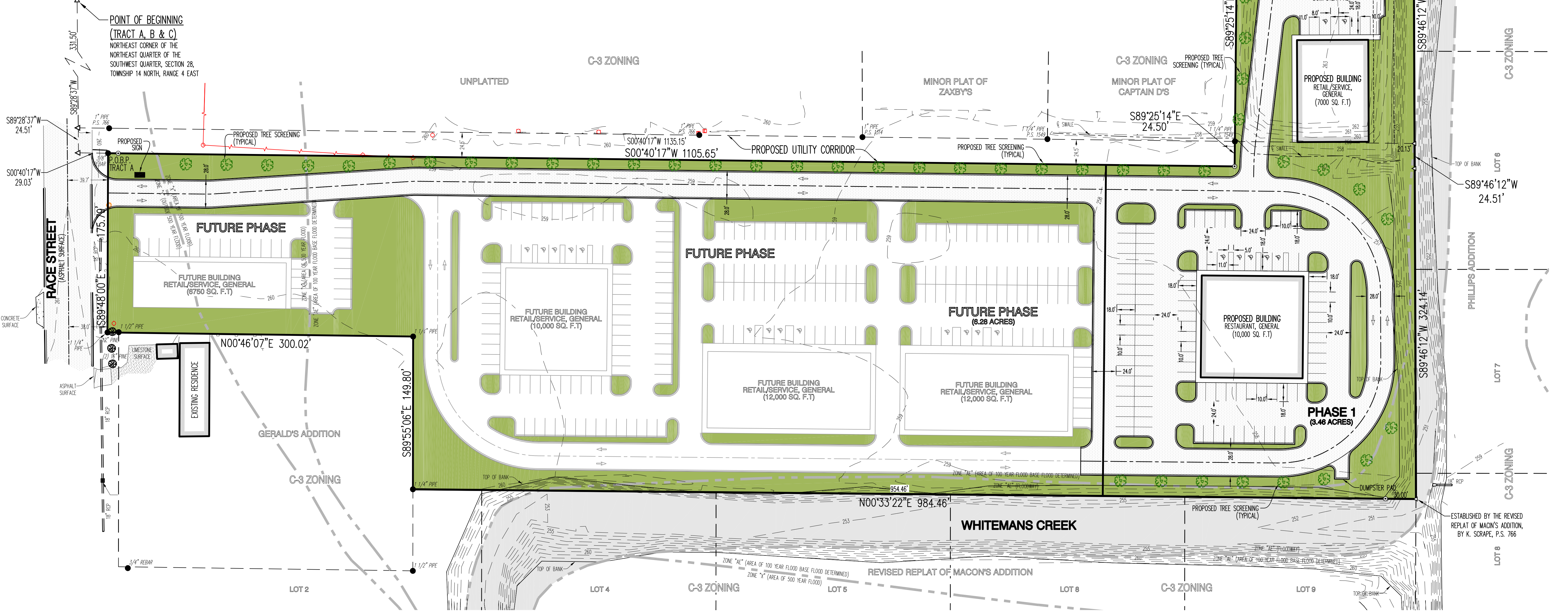
DRAWN BY: JUN
CHECKED BY: MAD

SHEET: 1 OF 1
SCALE: 1"=50'
DATE: 06/17/11
DRAWING NO.: 31-62



VICINITY MAP
(NOT TO SCALE)

BASIS OF BEARING: ARKANSAS STATE PLANE GRID NORTH ZONE (0301)



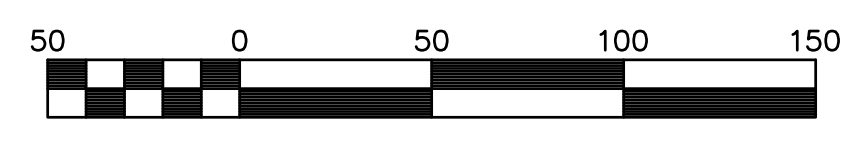
- LEGEND:**
- FOUND MONUMENT (AS NOTED)
 - SET 5/8" REBAR W/ ORANGE PLASTIC CAP STAMPED "M.A. DANIELS P.S. 1563"
 - △ COMPUTED POINT (NOT MONUMENTED)
 - UTILITY POLE
 - LIGHT POLE
 - GUY WIRE
 - ELECTRIC BOX
 - SANITARY SEWER MANHOLE
 - GRATE INLET
 - TELEPHONE PEDESTAL
 - SIGN (AS NOTED)
 - TREE (AS NOTED)
 - OVERHEAD ELECTRIC LINE
 - WATER LINE
 - SANITARY SEWER LINE
 - GAS LINE
 - TELECOMMUNICATION LINE
 - WOOD FENCE LINE

PHASE 1 COMPLIANCE TABLE:

	PLANNED	REQUIRED
PARKING (TOTAL)	131	120
COMMON OPEN SPACE	34%	15%
	1.16 ACRES	0.52 ACRES

FUTURE PHASE COMPLIANCE TABLE:

	PLANNED	REQUIRED
PARKING (TOTAL)	239	163
COMMON OPEN SPACE	26%	15%
	1.61 ACRES	0.94 ACRES



SCALE 1" = 50'

PD-C PRELIMINARY DEVELOPMENT PLAN