

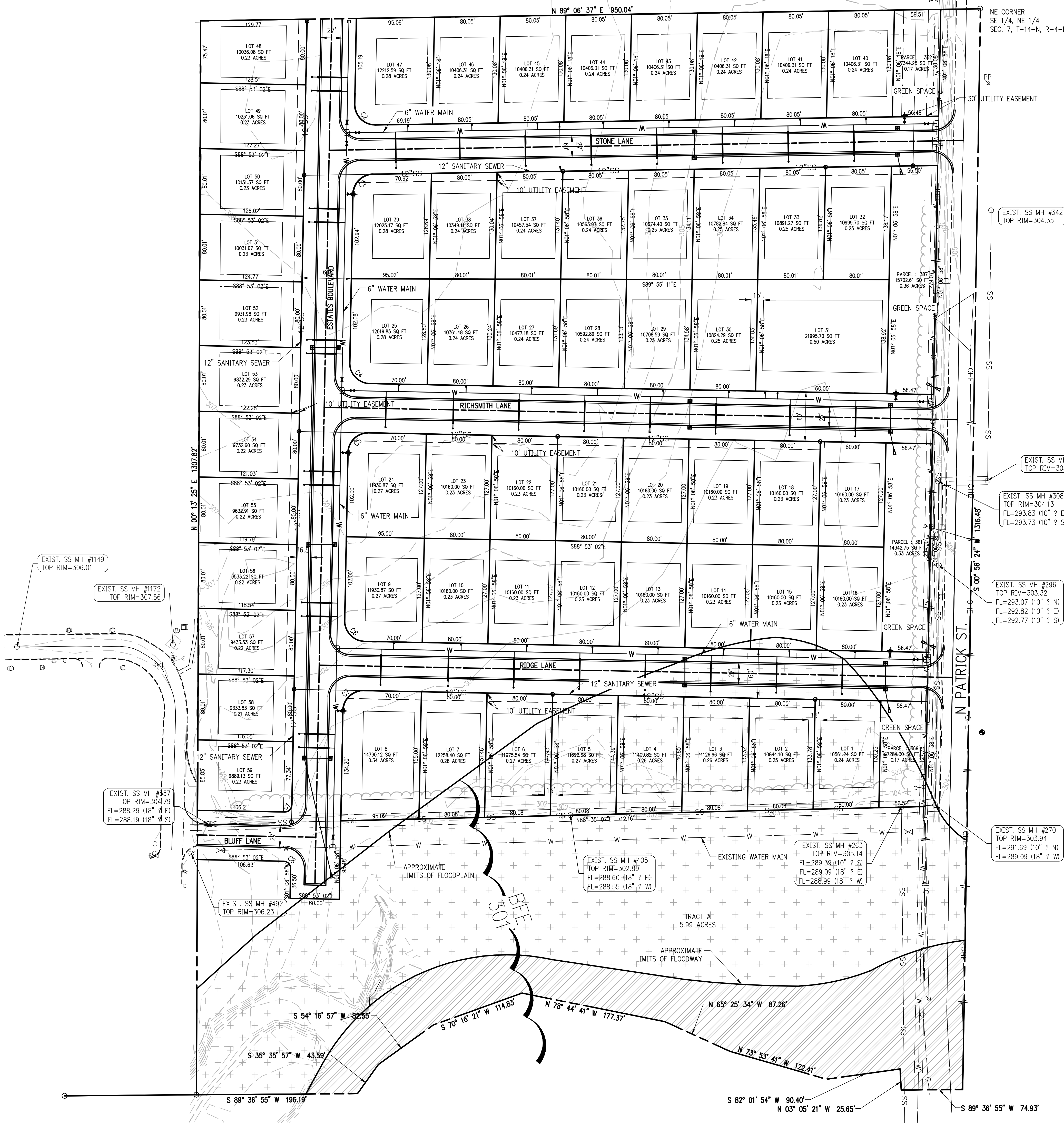
CURVE #	LENGTH	RADIUS	DELTA	CHORD DIRECTION	CHORD LENGTH
C1	13.35'	8.50'	90°00'00"	N46° 06' 58"E	12.02'
C2	39.15'	25.00'	89°42'51"	S46° 01' 57"E	35.27'
C3	38.39'	25.00'	87°59'59"	S45° 06' 47"W	34.73'
C4	39.27'	25.00'	90°00'00"	S43° 53' 02"E	35.36'
C5	39.27'	25.00'	90°00'00"	S46° 06' 58"W	35.36'
C6	39.27'	25.00'	90°00'01"	S43° 53' 03"E	35.36'
C7	39.27'	25.00'	90°00'01"	N46° 06' 57"E	35.36'
C8	13.35'	8.50'	90°00'00"	S43° 53' 02"E	12.02'

### PROJECT INFORMATION

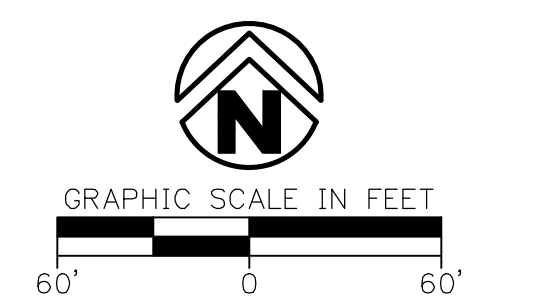
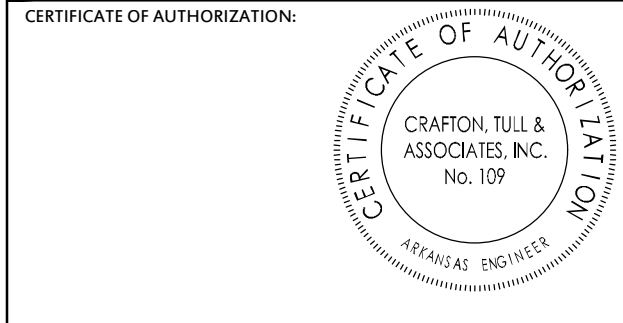
- OWNER INFORMATION:**  
 RICHSMITH HOLDINGS LLC.  
 9800 MAUMELLE BLVD.  
 NORTH LITTLE ROCK, AR 72113  
 501-758-0050
- SITE ENGINEER/DESIGNER:**  
 CRAFTON TULL  
 10825 FINANCIAL CENTRE PARKWAY, SUITE 300  
 LITTLE ROCK, AR 72211  
 (501) 644-3245  
 TOTAL AREA: 27.35 ACRES

**FLOOD PLAIN STATEMENT**  
 A PORTION OF THE PROPERTY SHOWN IS LOCATED WITHIN THE 100-YEAR FLOOD PLAIN AS DESIGNATED BY THE FLOOD INSURANCE RATE MAP, PANEL NO. 05031C0044C, PUBLISHED BY THE FEDERAL EMERGENCY MANAGEMENT AGENCY DATED SEPTEMBER 27, 1991.

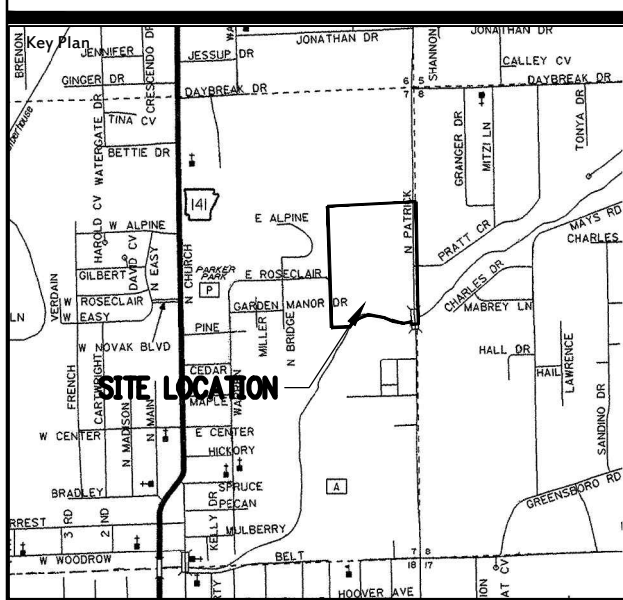
ZONING	SETBACK (FEET)			
	FRONT	REAR	SIDE EXTERIOR	SIDE INTERIOR
R-1	25'	25'	25'	7.5'



501.644.3245 | 501.644.6704 | www.craftontull.com



### PRELIMINARY PLAT RIDGE ESTATES OF JONESBORO JONESBORO, ARKANSAS



No.	Description	Date

This document, and the ideas and designs incorporated herein, as an instrument of professional service, is the property of Crafton, Tull & Associates, Inc., and is not to be used, in whole or in part, for any other project, without the written authorization of Crafton, Tull & Associates, Inc.

PROJECT NO: 15807300  
 ISSUE DATE: 4-1-16  
 CONTACT: T. TOLLEY  
 CHECKED BY: