

DESCRIPTION OF SURVEY FOR: Holt Trust

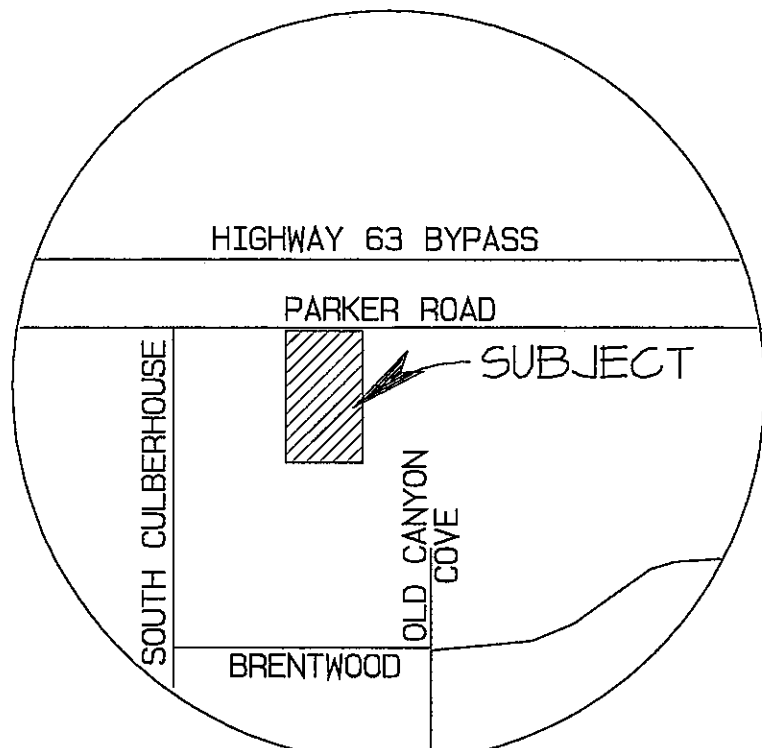
OF: 627 West Parker Road
Jonesboro, Arkansas

The following described lands in Craighead County, Arkansas, to-wit:
A part of the Northwest Quarter of the Northwest Quarter of Section 31,
Township 14 North, Range 4 East, more particularly described as follows:
Commence at a point which is 30 feet South and 955 feet West of the
Northeast corner of NW1/4 NW1/4, run thence West (N89°44'W measured) 115
feet, run thence South (S0°01'W measured) 210 feet, run thence East
(S89°44'E measured) 115 feet, run thence North (N0°01'E measured) 210 feet
to the point of beginning proper, SUBJECT TO the right-of-way of Parker
Road off the North side thereof and all utility easements.

Notes:

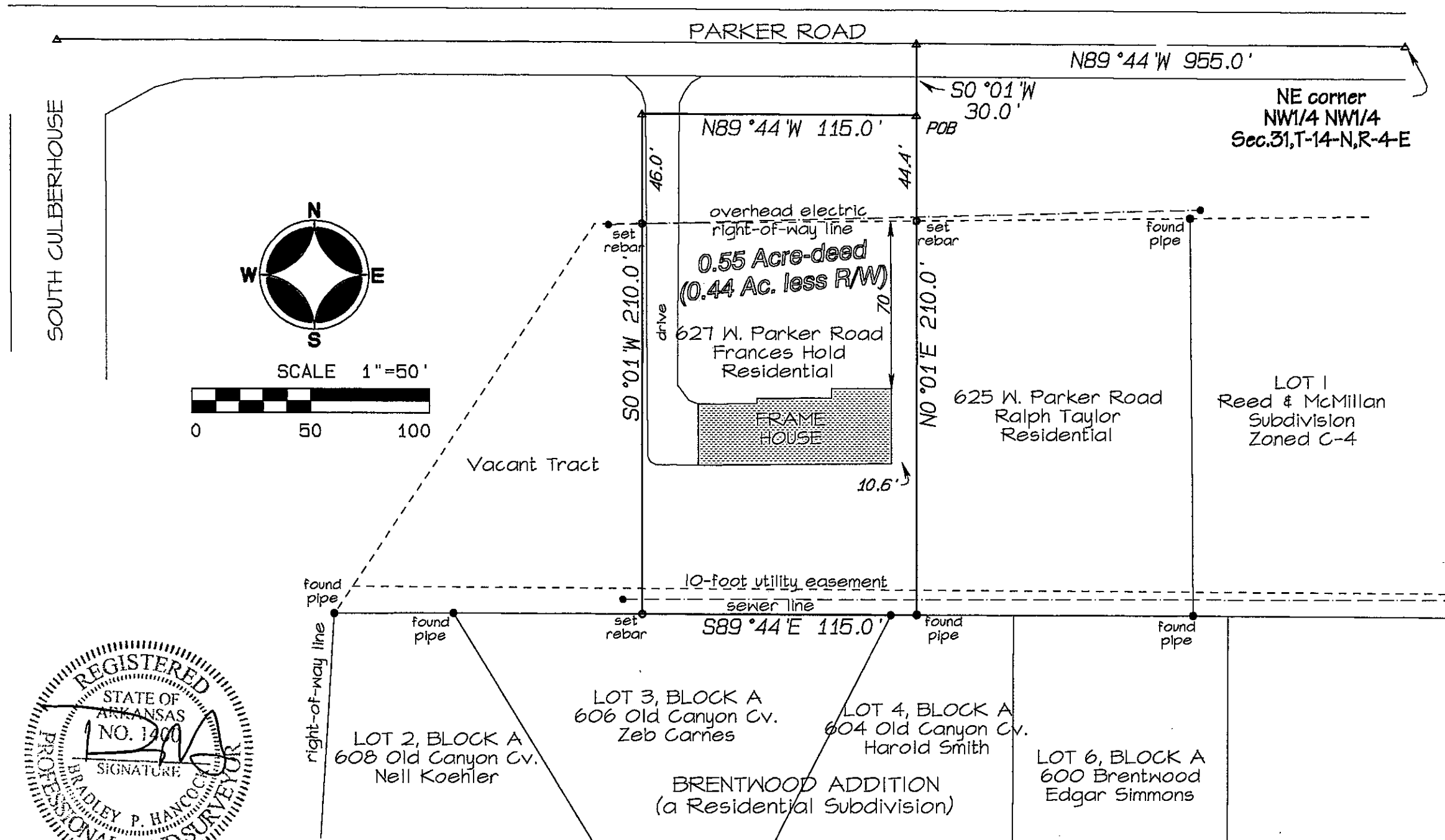
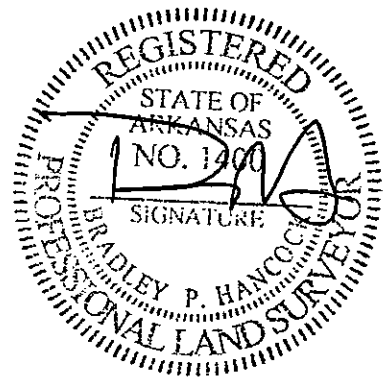
- 1.) Bearings from GPS observation.
- 2.) Improvements are as shown.

Dated: December 3, 2008



Vicinity Map: not to scale

Bradley P. Hancock
Surveying & Mapping
120 North Second Street
Paragould, Arkansas



HIGHWAY 63 BYPASS

PARKER ROAD

N89°44'W 955.0'

NE corner
NW1/4 NW1/4
Sec. 31, T-14-N, R-4-E

N89°44'W 115.0'

S0°01'W
30.0'

N0°01'E 210.0'

0.55 Acre-deed
(0.44 Ac. less R/W)

627 W. Parker Road
Frances Hold
Residential

FRAME
HOUSE

625 W. Parker Road
Ralph Taylor
Residential

LOT 1
Reed & McMillan
Subdivision
Zoned C-4

Vacant Tract

10-foot utility easement
sewer line

S89°44'E 115.0'

LOT 3, BLOCK A
606 Old Canyon Cv.
Zeb Carnes

LOT 4, BLOCK A
604 Old Canyon Cv.
Harold Smith

LOT 6, BLOCK A
600 Brentwood
Edgar Simmons

LOT 2, BLOCK A
608 Old Canyon Cv.
Nell Koehler

BRENTWOOD ADDITION
(a Residential Subdivision)