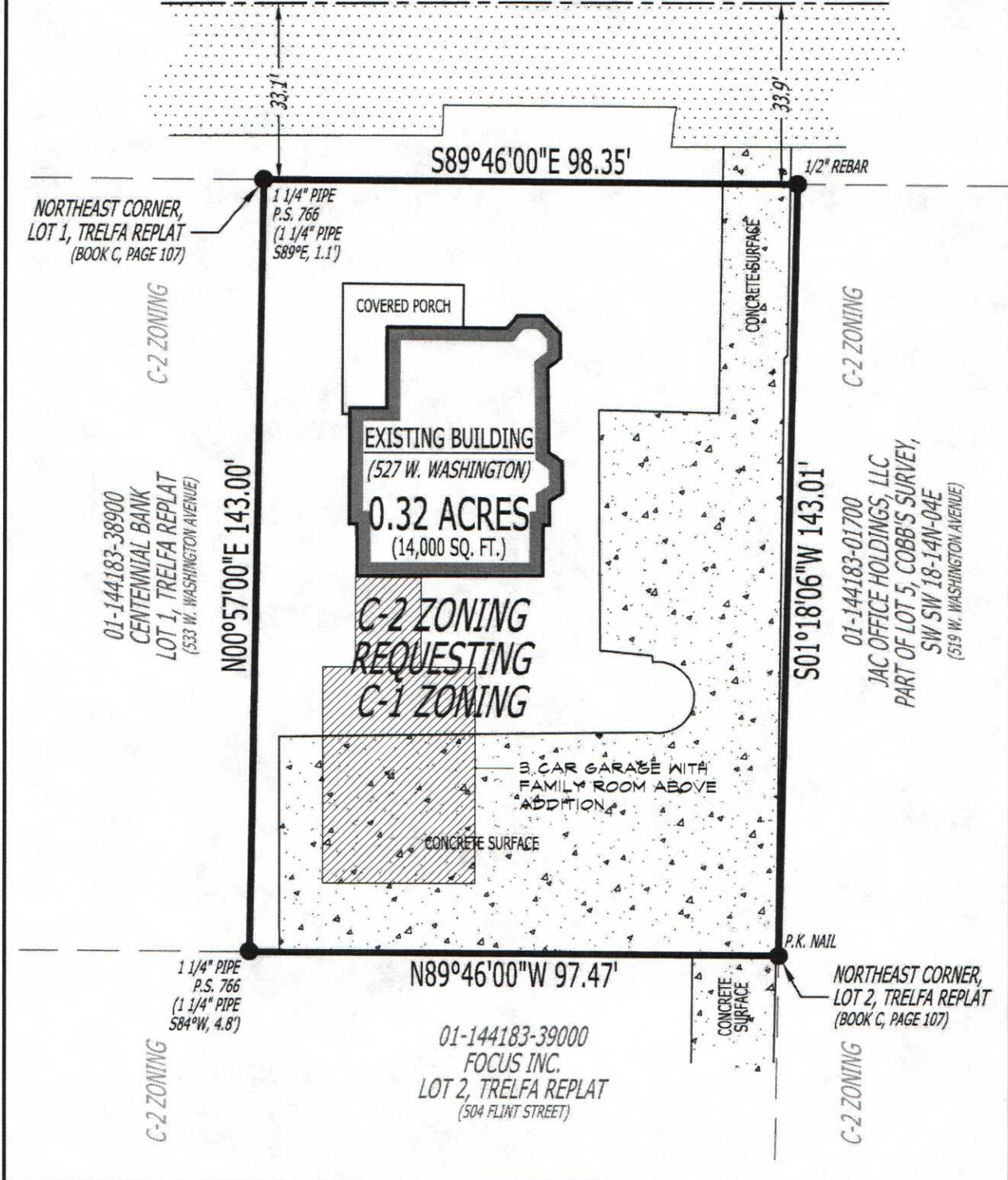


WEST WASHINGTON AVENUE

(C/L ASPHALT SURFACE)



NORTHEAST CORNER,
LOT 1, TRELFA REPLAT
(BOOK C, PAGE 107)

C-2 ZONING

01-144183-38900
CENTENNIAL BANK
LOT 1, TRELFA REPLAT
(533 W. WASHINGTON AVENUE)

N00°57'00"E 143.00'

COVERED PORCH

EXISTING BUILDING
(527 W. WASHINGTON)
0.32 ACRES
(14,000 SQ. FT.)

C-2 ZONING
REQUESTING
C-1 ZONING

3-CAR GARAGE WITH
FAMILY ROOM ABOVE
ADDITION

CONCRETE SURFACE

1/2" REBAR

CONCRETE SURFACE

C-2 ZONING

S01°18'06"W 143.01'

01-144183-01700
JAC OFFICE HOLDINGS, LLC
PART OF LOT 5, COBB'S SURVEY,
SW SW 18-14N-04E
(519 W. WASHINGTON AVENUE)

1 1/4" PIPE
P.S. 766
(1 1/4" PIPE
S84°W, 4.8')

C-2 ZONING

N89°46'00"W 97.47'

01-144183-39000
FOCUS INC.
LOT 2, TRELFA REPLAT
(504 FLINT STREET)

P.K. NAIL

CONCRETE SURFACE

NORTHEAST CORNER,
LOT 2, TRELFA REPLAT
(BOOK C, PAGE 107)

C-2 ZONING