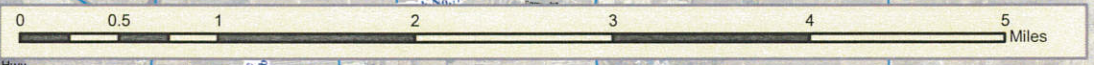


### Flooding Calls

- All Other Calls (Pink circle)
- Property (Green triangle)
- Structure (Red pentagon)

### Ditches Maintenance

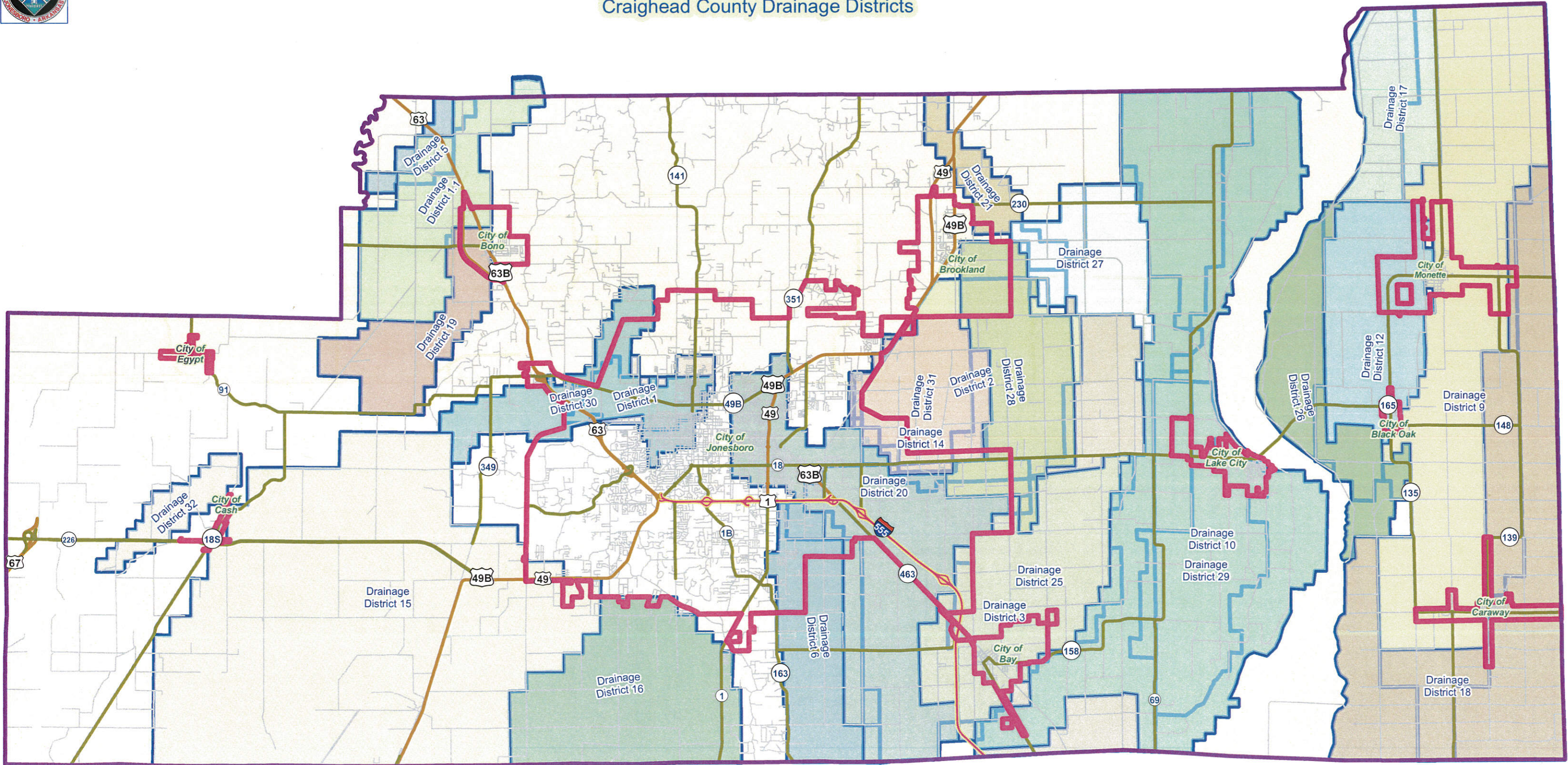
- Mowing (Green line)
- Clear/Shred (Brown line)
- Bank Stabilization (Yellow line)
- Restore Capacity (Blue line)
- Stream (Blue line)
- Named Waterways (Blue line)







# Approximate Locations of Boundaries for Craighead County Drainage Districts



**Legend**

- City Limits
- Local Streets
- Interstate
- State Highway
- US Highway
- Drainage Districts Edges
- Craighead County

